

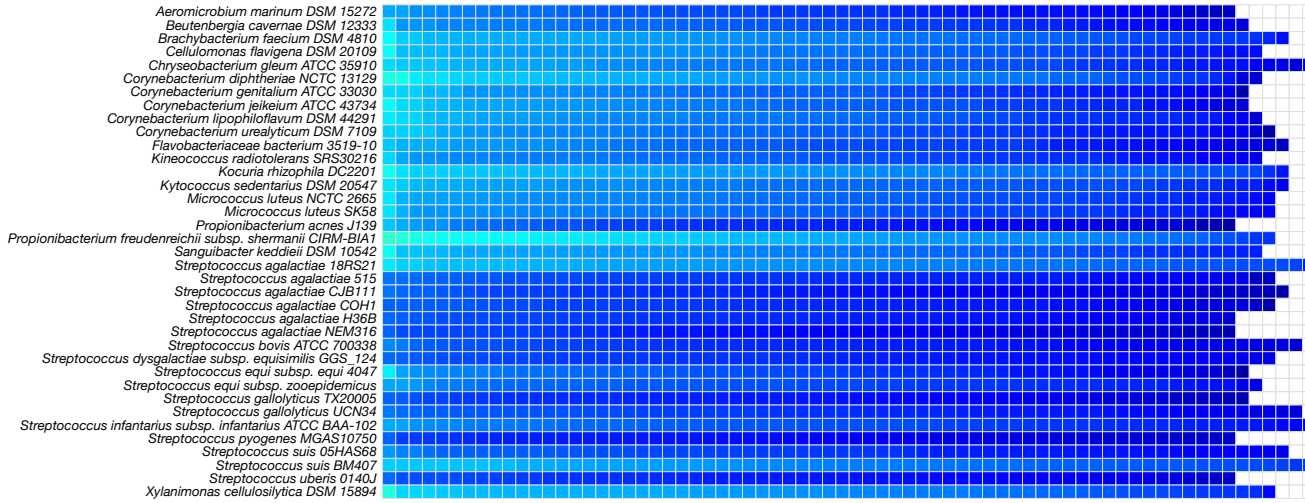
Buccal Mucosa



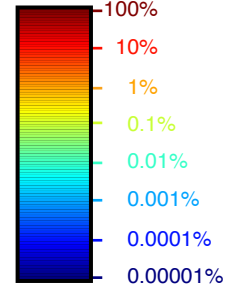
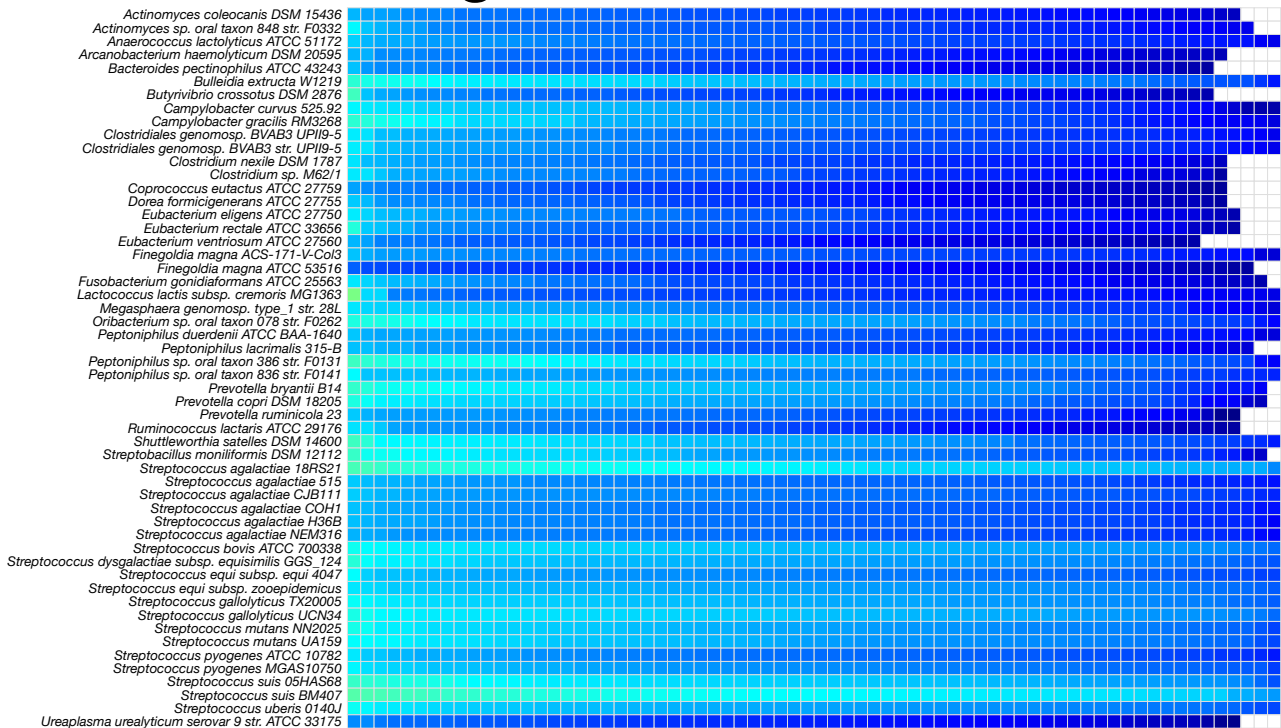
Stool



Supragingival Plaque



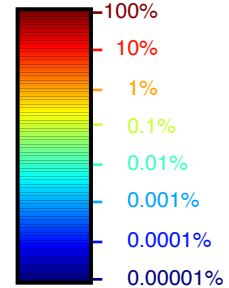
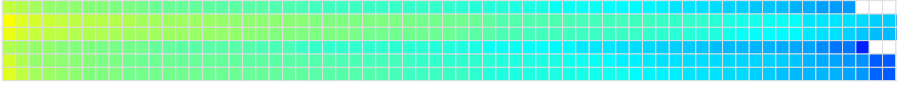
Tongue Dorsum



A

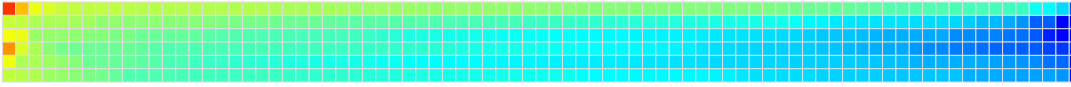
Buccal Mucosa

Actinobacillus pleuropneumoniae serovar 1 str. 4074
Aggregatibacter actinomycetemcomitans D11S-1
Aggregatibacter actinomycetemcomitans D7S-1
Haemophilus ducreyi 35000HP
Haemophilus somnus 2336
Mannheimia succiniciproducens MBEL55E



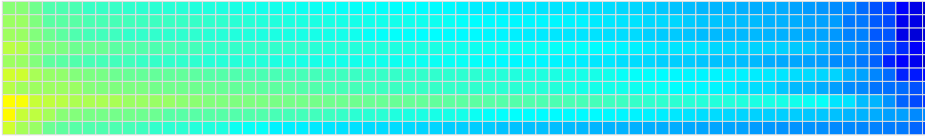
Stool

Bacteroides fragilis 3_1_12
Blautia hansenii DSM 20583
Clostridium scindens ATCC 35704
Eubacterium dolichum DSM 3991
Prevotella bivia JCVIHMPO10
Prevotella buccalis ATCC 35310



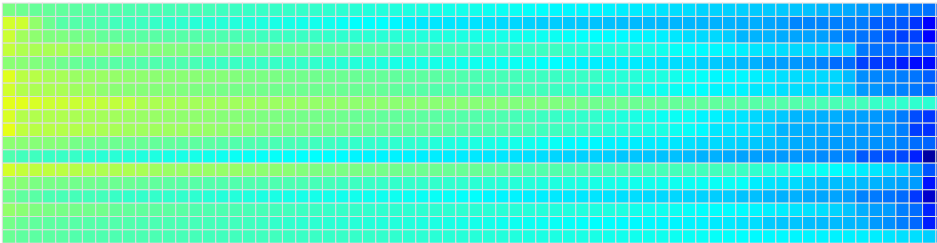
Supragingival Plaque

Actinobacillus pleuropneumoniae serovar 1 str. 4074
Actinobacillus pleuropneumoniae serovar 7 str. AP76
Actinobacillus succinigenes 130Z
Haemophilus somnus 2336
Mannheimia haemolytica serotype A2 str. OVINE
Mannheimia succiniciproducens MBEL55E
Neisseria lactamica ATCC 23970
Pasteurella multocida subsp. *multocida* str. Pm70
Streptococcus salivarius SK126
Streptococcus thermophilus LMD-9



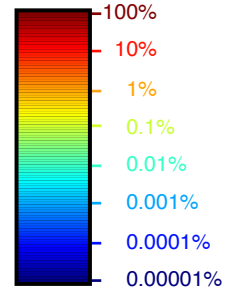
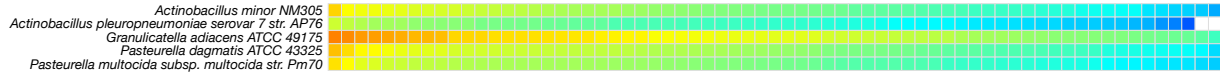
Tongue Dorsum

Actinomyces urogenitalis DSM 15434
Filifactor alocis ATCC 35896
Fusobacterium nucleatum subsp. *vincentii* ATCC 49256
Fusobacterium sp. 3_1_33
Fusobacterium sp. 4_1_13
Fusobacterium sp. 7_1
Fusobacterium sp. D11
Granulicatella elegans ATCC 700633
Haemophilus somnus 2336
Mannheimia succiniciproducens MBEL55E
Peptostreptococcus anaerobius 653-L
Prevotella bergensis DSM 17361
Prevotella bivia JCVIHMPO10
Prevotella buccae D11
Prevotella buccalis ATCC 35310
Prevotella marshii DSM 16973
Prevotella timonensis CRIS 5C-B1
Streptococcus infantarius subsp. *infantarius* ATCC BAA-102

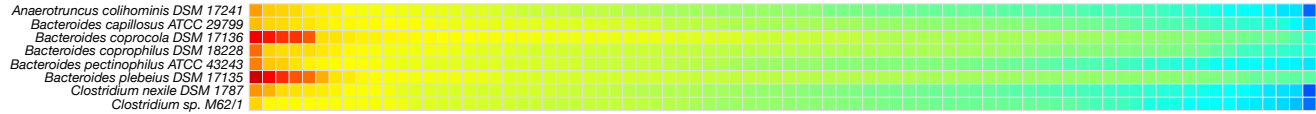


B

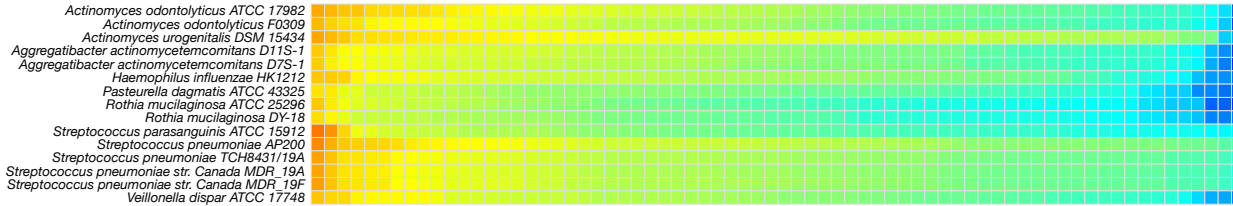
Buccal Mucosa



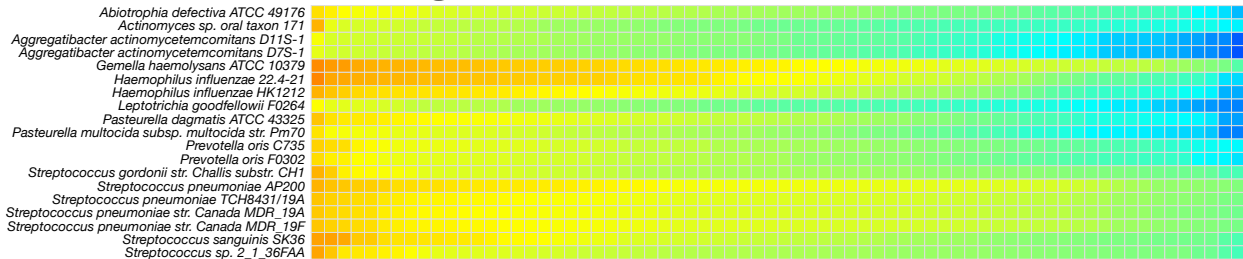
Stool



Supragingival Plaque



Tongue Dorsum



C