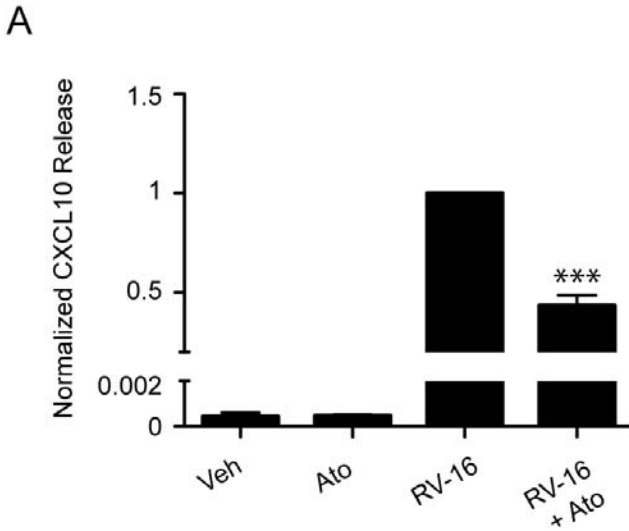


## Supplemental Material

### Supplemental Figure 1

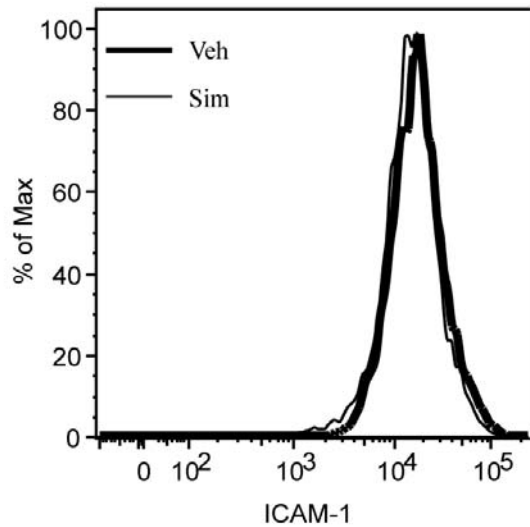


#### Supplemental Figure 1. Atorvastatin attenuates RV-induced CXCL10 secretion.

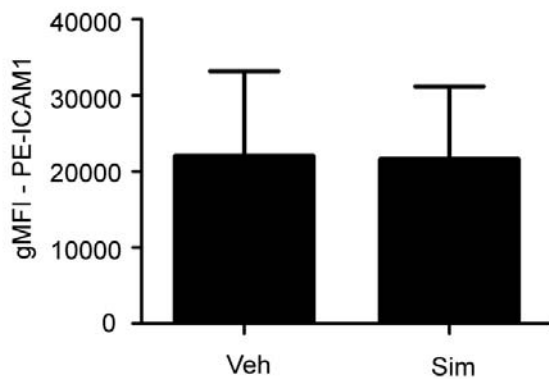
Human blood monocytes were pretreated with vehicle or atorvastatin (10  $\mu$ M) for 24 h. RV-16 (MOI=10)-induced CXCL10 release at 24 h was measured and data were pooled and normalized to vehicle-pretreated, RV-16 stimulated CXCL10 release (n=3). Error bars indicate SEM, \*\*\* p < 0.001 compared to RV-16 treatment alone.

## Supplemental Figure 2

A



B



**Supplemental Figure 2. Simvastatin does not affect ICAM-1 surface expression on human blood monocyte cells.**

(A) Representative histogram from flow cytometry analysis of ICAM-1 expression on human blood monocytes treated with vehicle or simvastatin (10  $\mu$ M) treated for 24 h. (B) Average gMFI of ICAM-1 expression on human blood monocytes (n=3). Error bars indicate SEM.