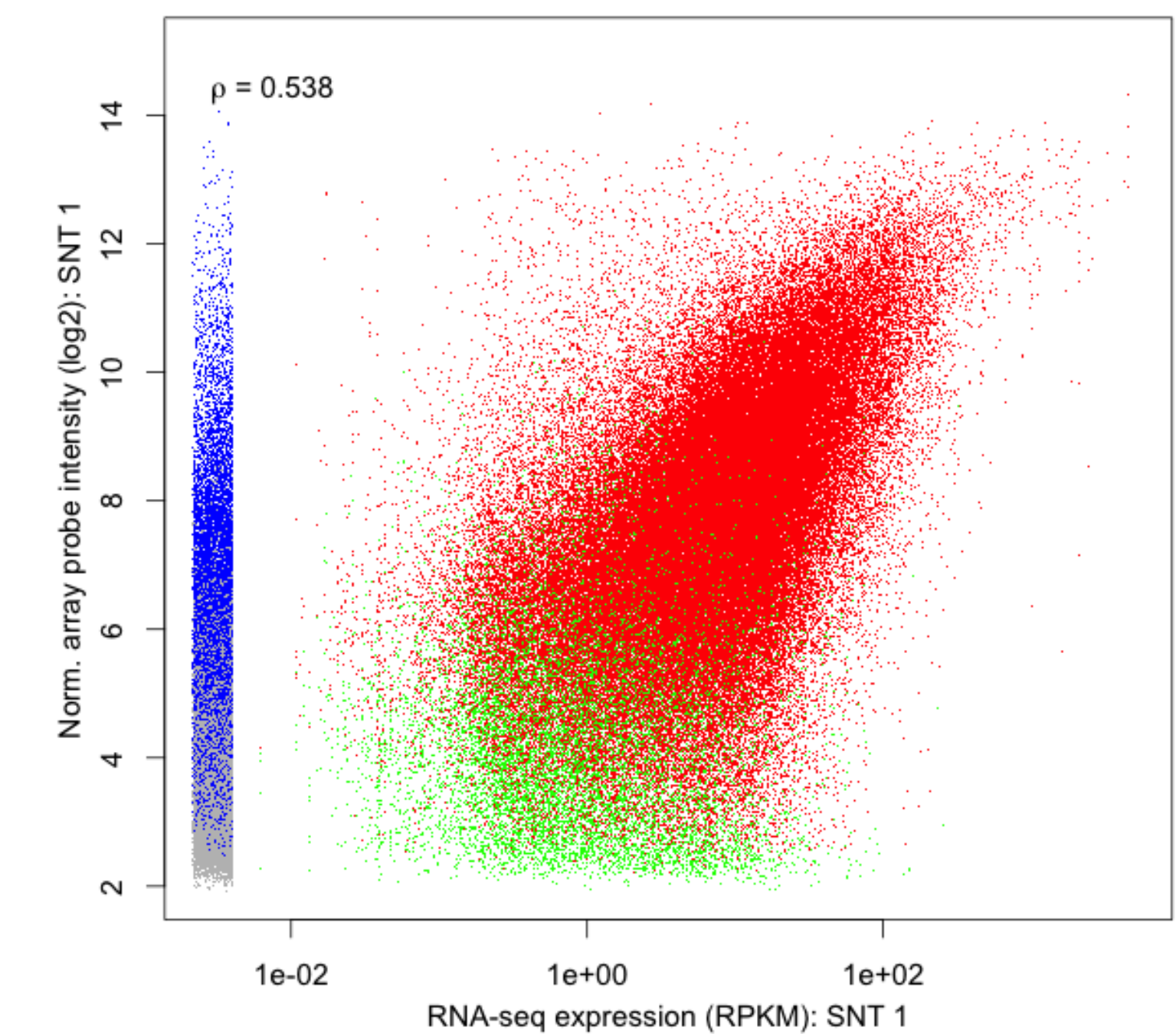
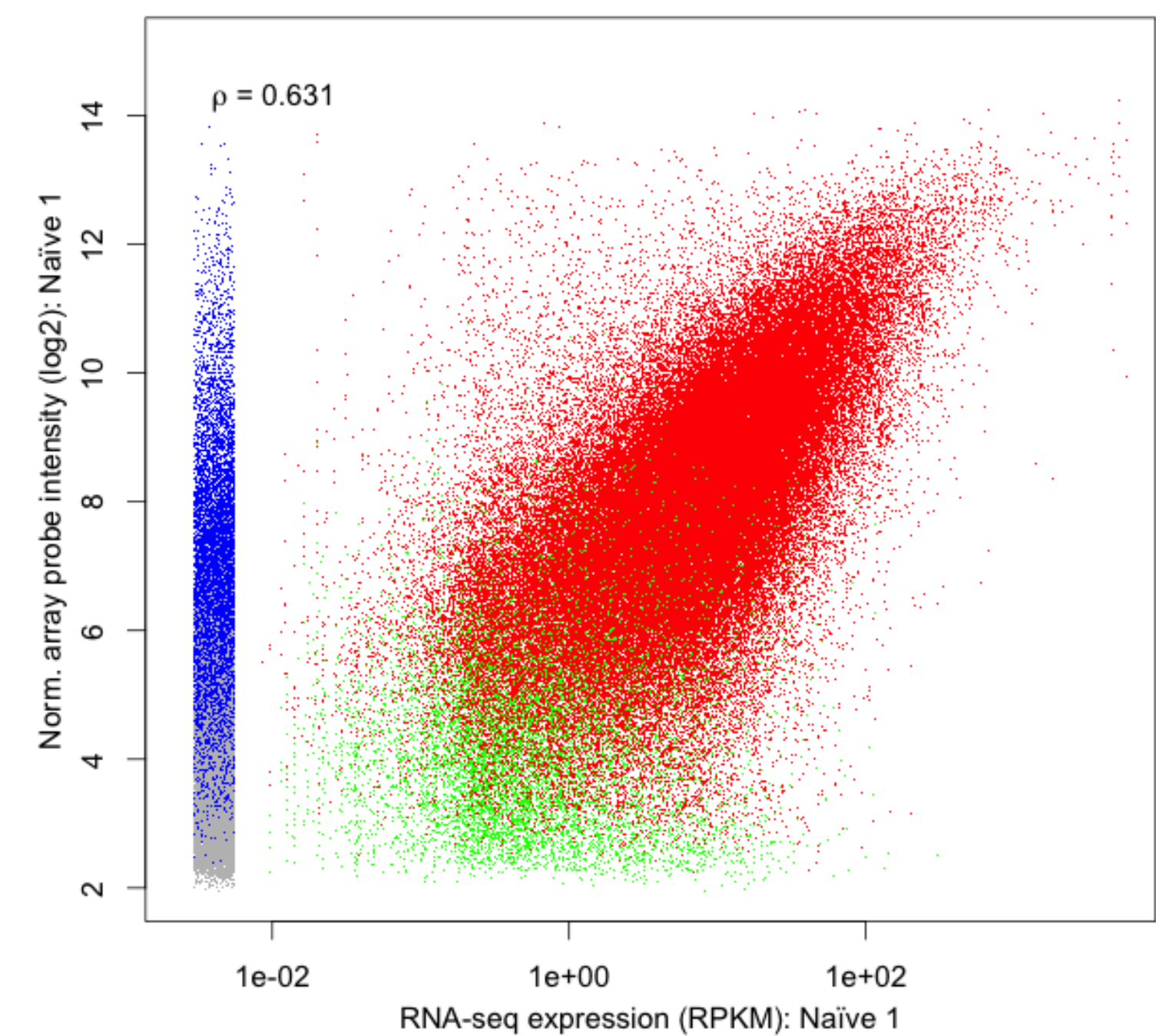


Ai

Depth: 50M, Probes: extended

**Aii**

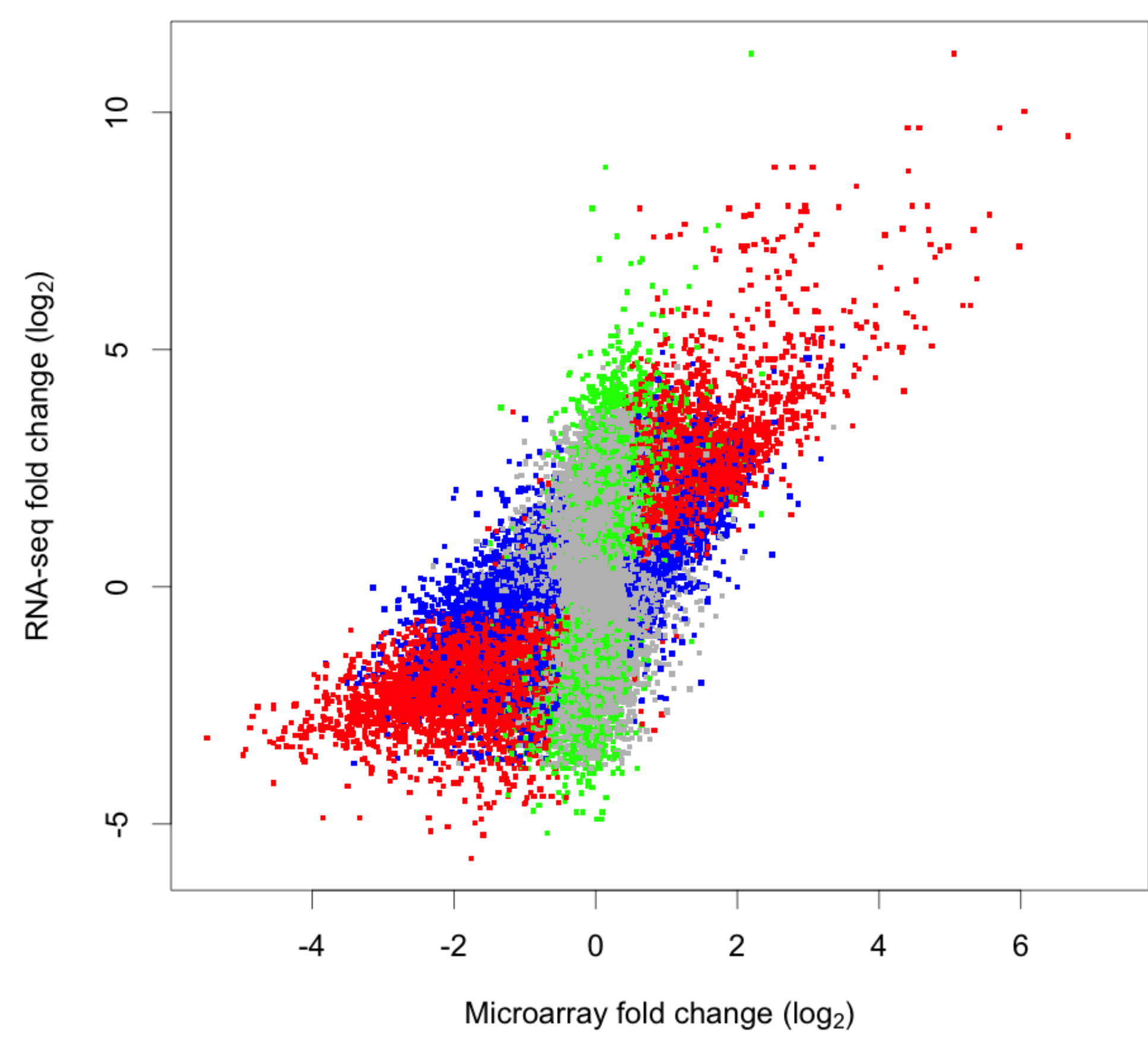
Depth: 50M, Probes: extended



- Not detected in either platform
- Detected in RNA-seq, signal below noise in microarrays
- Detected by both platforms
- Detected by microarrays only

B

Depth: 50M, Probes: extd



- Sig. DE in both
- Sig. DE in RNA-seq only
- Sig. DE in microarrays only
- Not sig. DE for either platform

C