

Supplement Information

Ultrasound Exfoliation of Inorganic Analogues of Graphene

Václav Štengl*, Jiří Henych, Michaela Slušná

Department of Solid State Chemistry, Institute of Inorganic Chemistry AS CR v.v.i.

250 68 Řež, Czech Republic

e-mail:stengl@iic.cas.cz

Table S1. Integral breath, d-spacing and crystallite size of prepared samples IAGs				
Sample	Peak Position 2Θ [°]	Integral breadth 2Θ[°]	d-spacing [nm]	Cryst. size [nm]
MoS ₂	14.37	0.19	0.665	826.1
MoS ₂ _exf	28.34	15.11	0.313	5.47
WS ₂	14.34	0.42	0.618	259.0
WS ₂ _exf	28.47	15.06	0.313	5.99
h-BN	39.54	6.95	0.349	13.20
h-BN_exf	28.03	14.22	0.317	6.37
h-BCN	26.11	4.40	0.341	21.00
h-BCN_exf	28.25	12.48	0.315	7.33
g-C ₃ N ₄	27.48	1.63	0.324	58.18
g-C ₃ N ₄ _exf	28.53	15.17	0.313	5.96

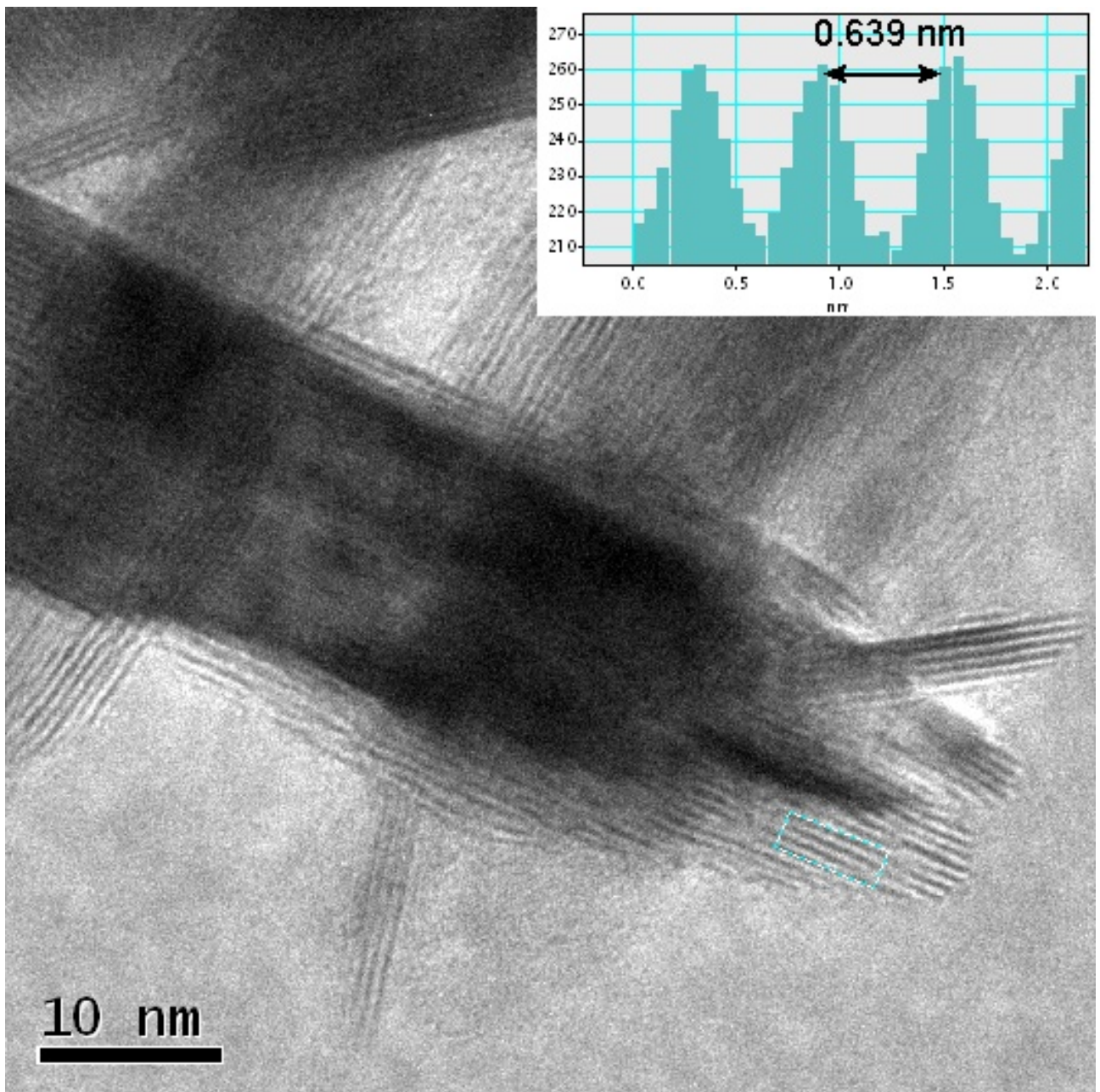


Figure S1. HRTEM of exfoliated MoS₂

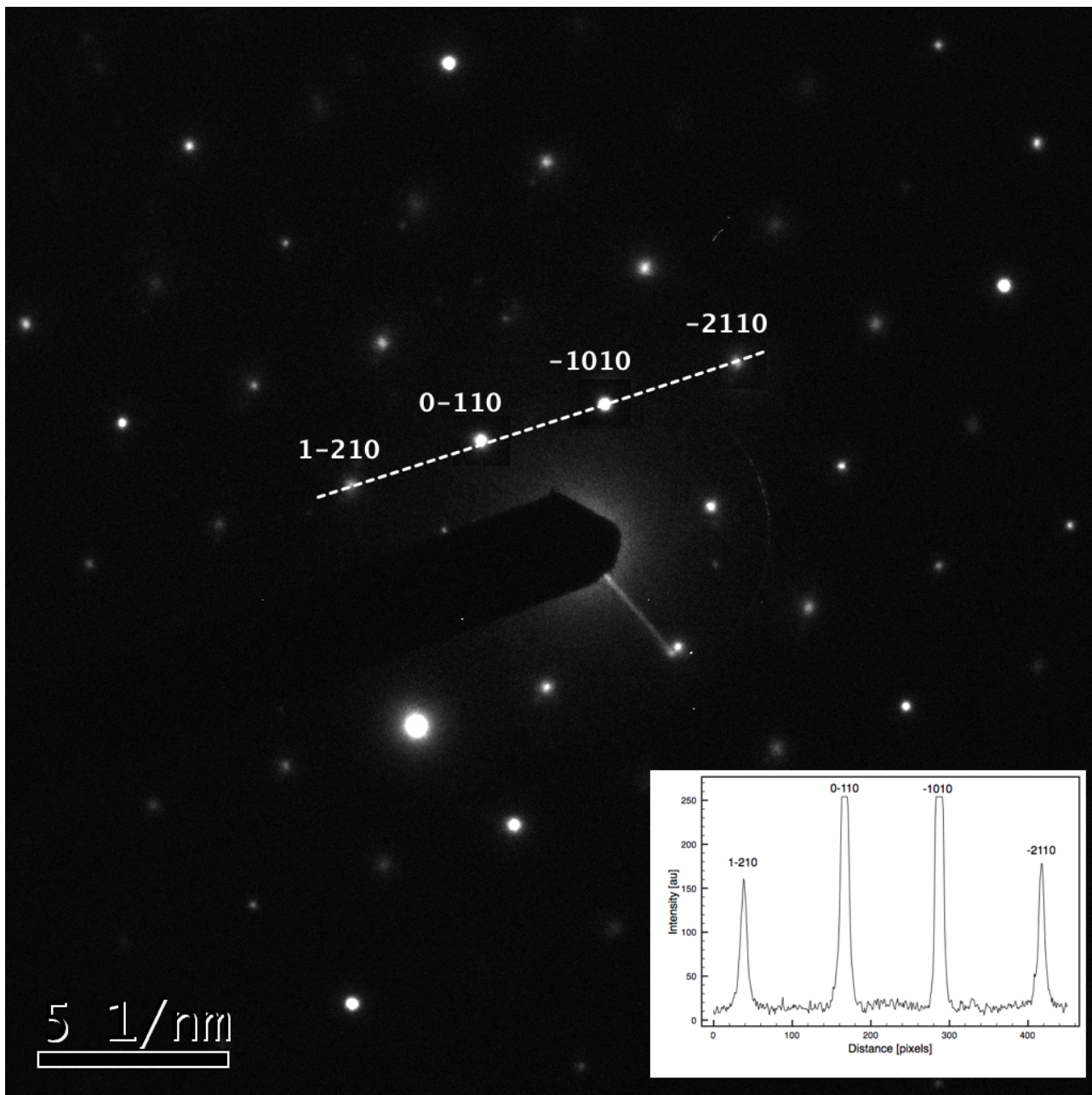


Figure S2. SAED of exfoliated MoS₂

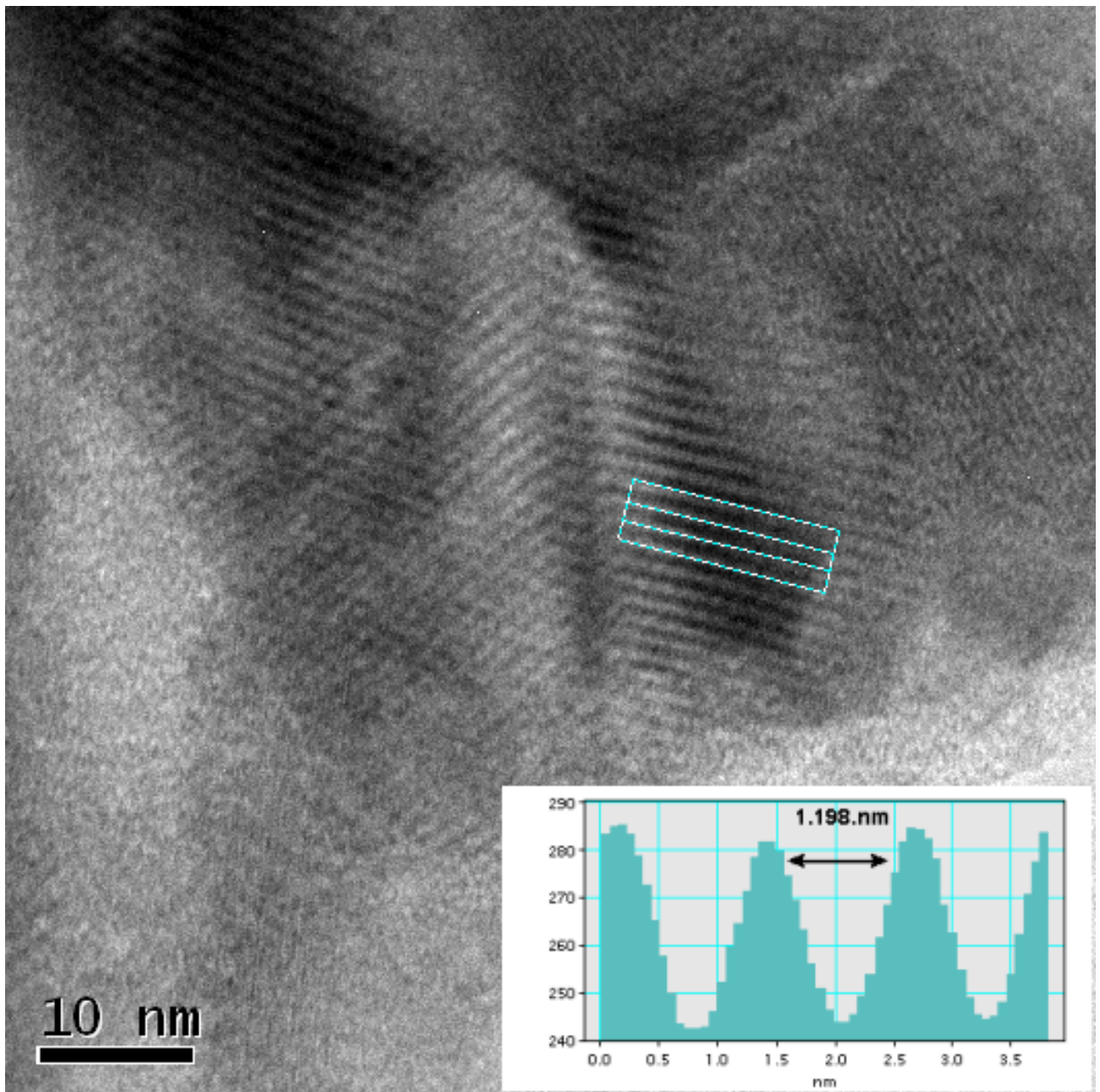


Figure S3. HRTEM of exfoliated WS₂

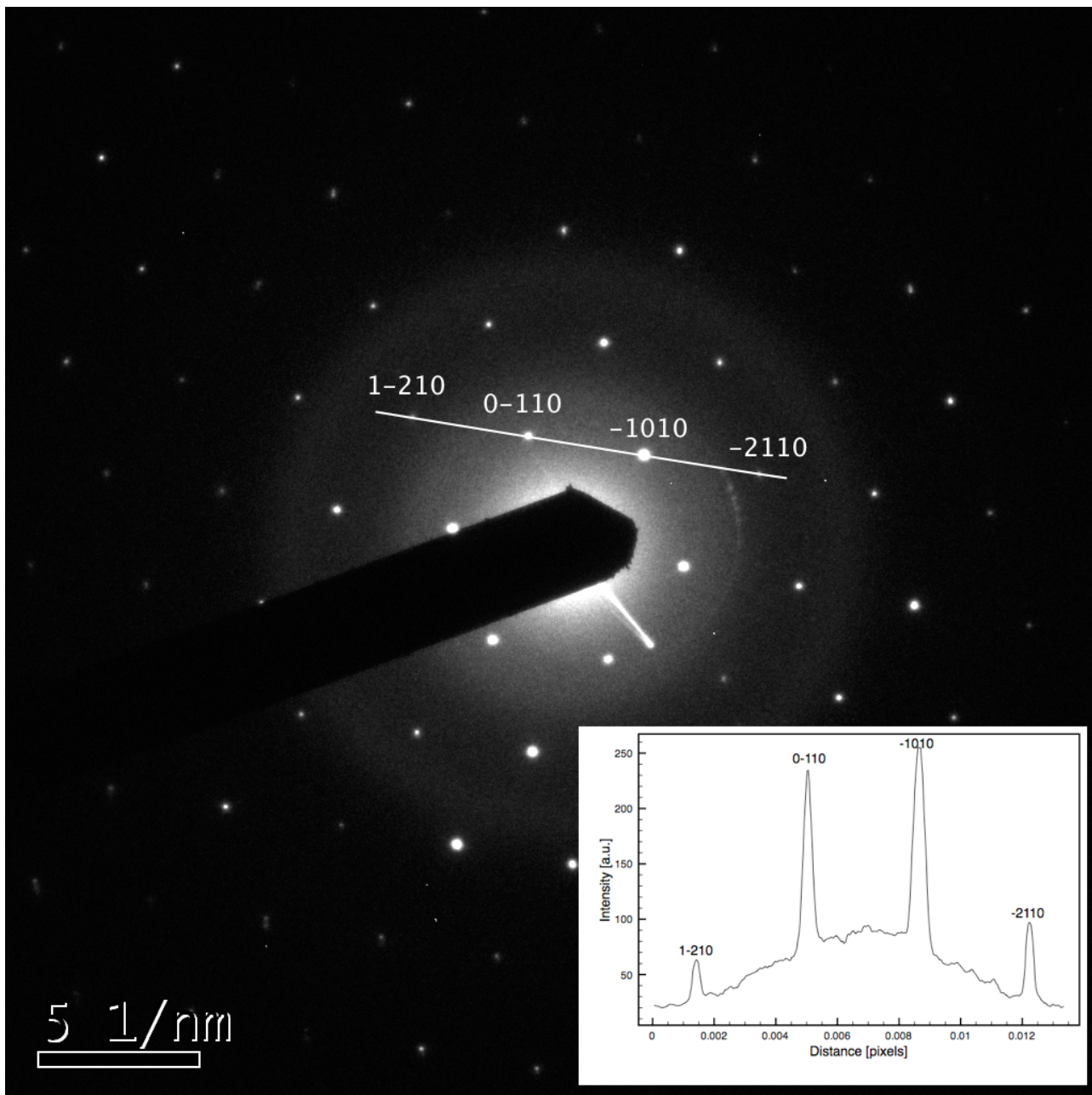


Figure S4. SAED of exfoliated WS₂

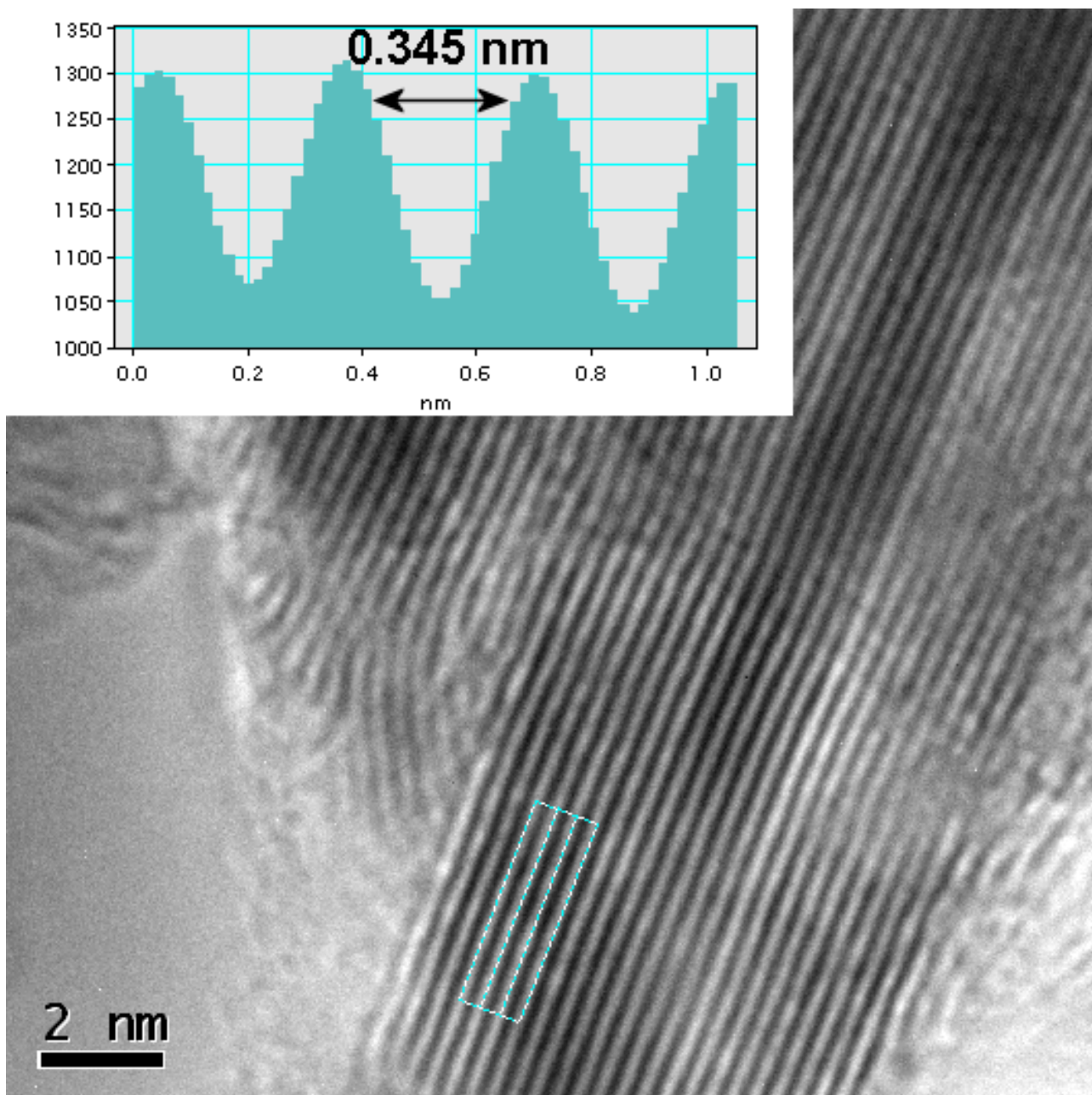


Figure S5. HRTEM of exfoliated h-BN

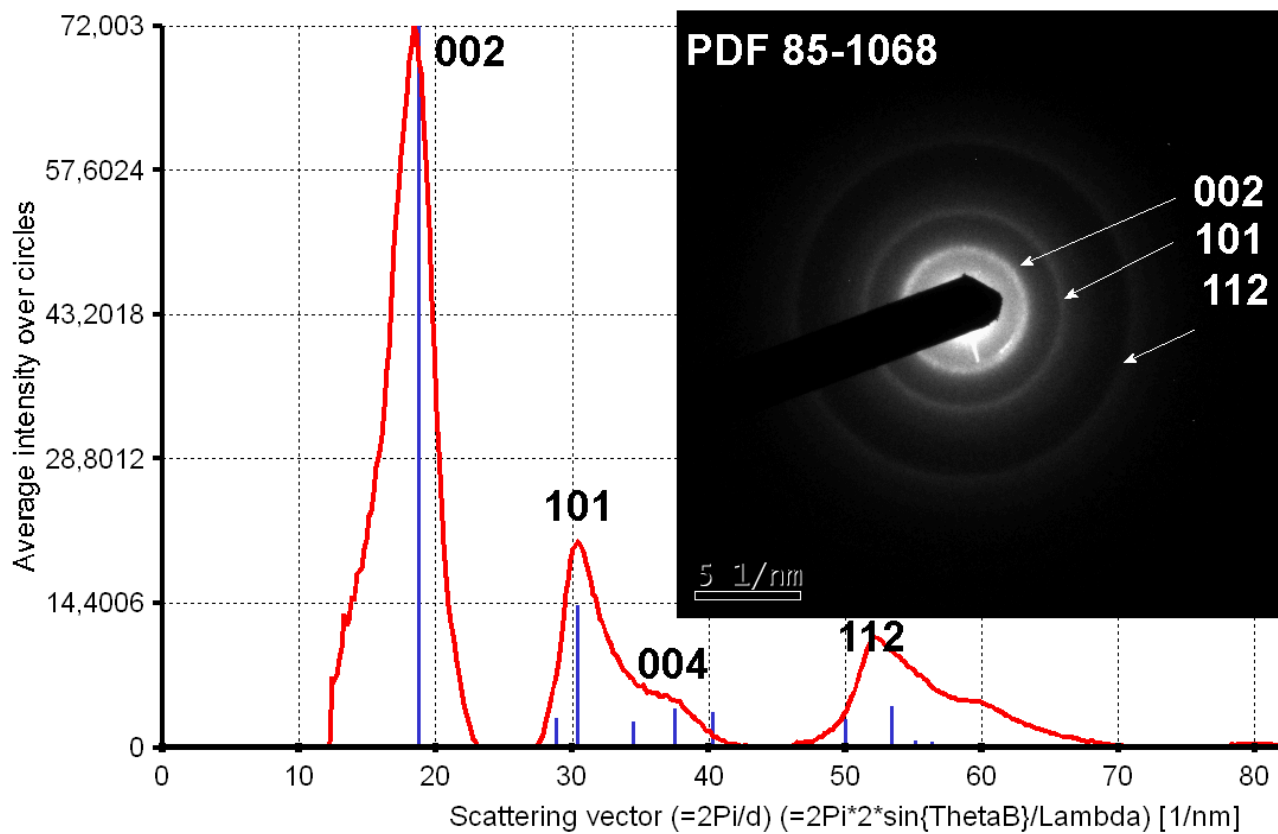


Figure S6. SAED of exfoliated h-BN

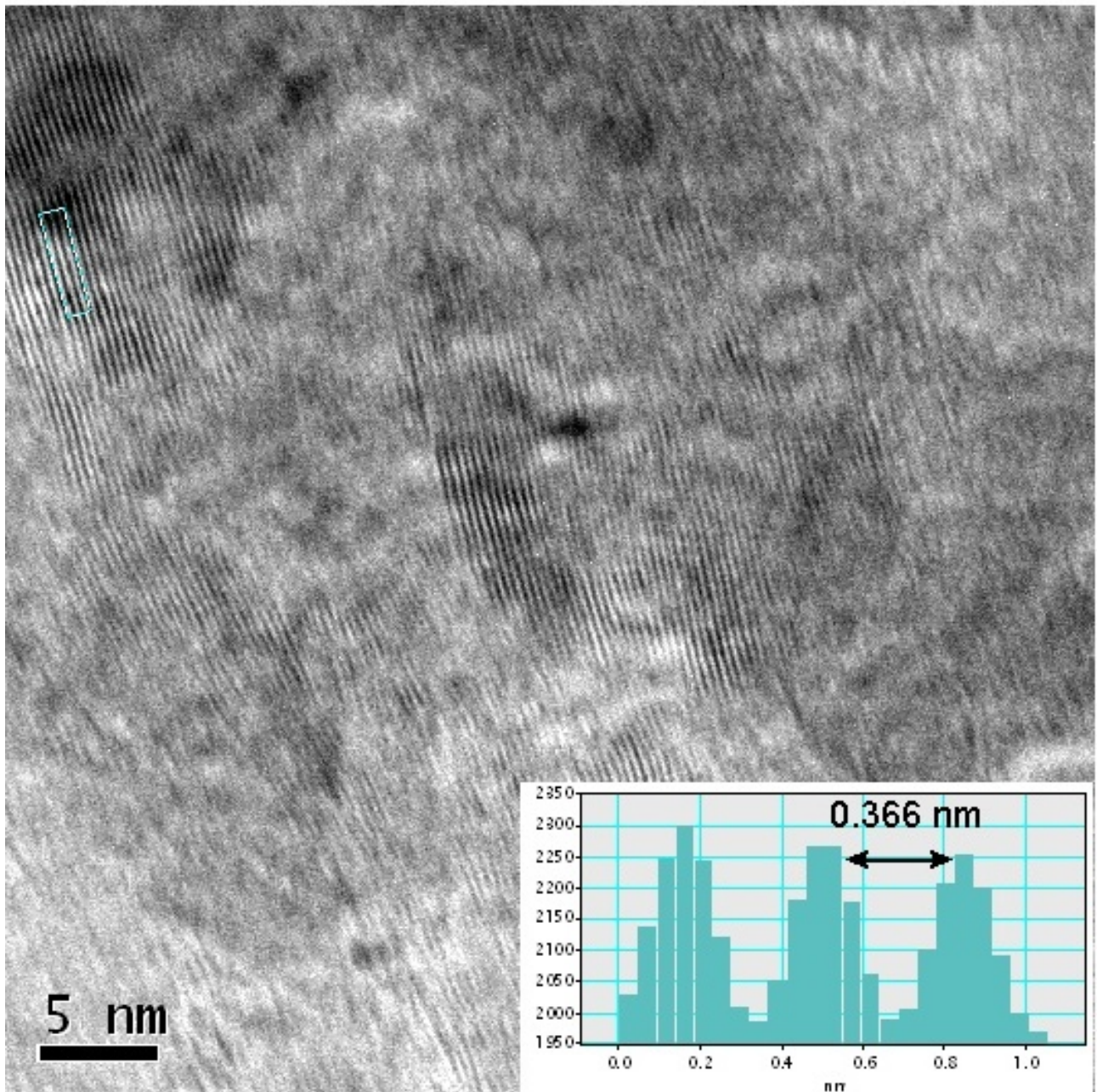


Figure S7. HRTEM of exfoliated h-BCN

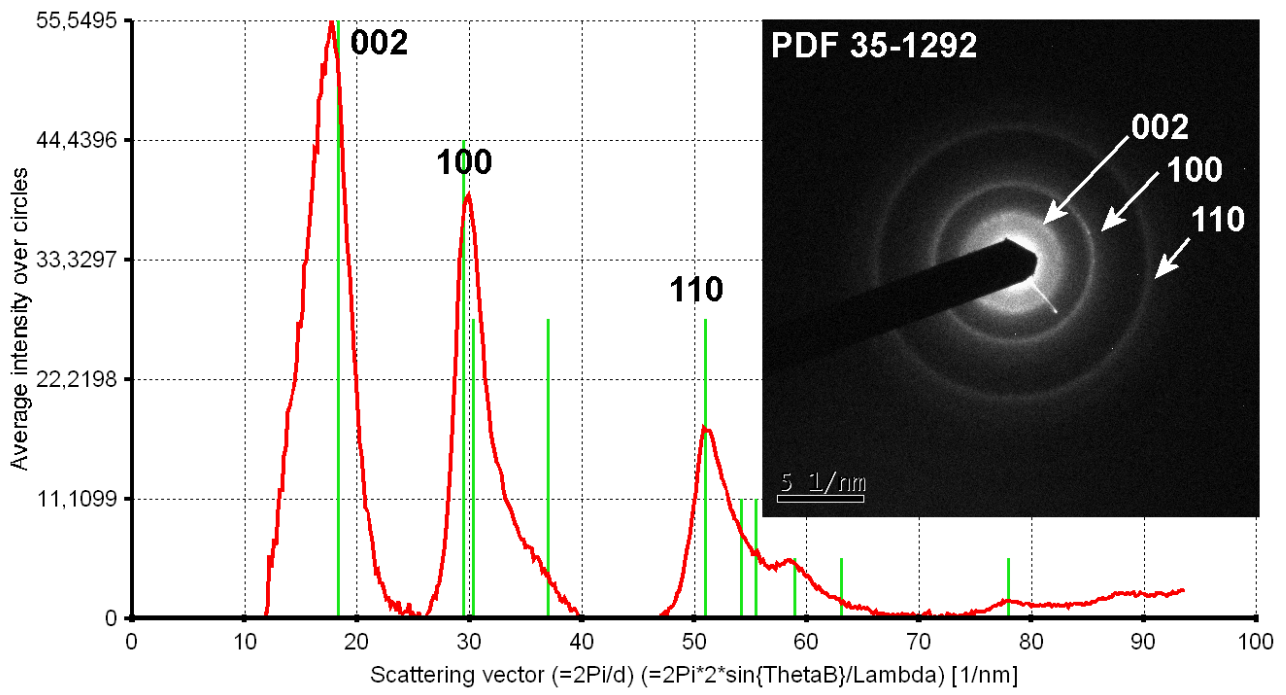


Figure S8. SAED of exfoliated h-BCN

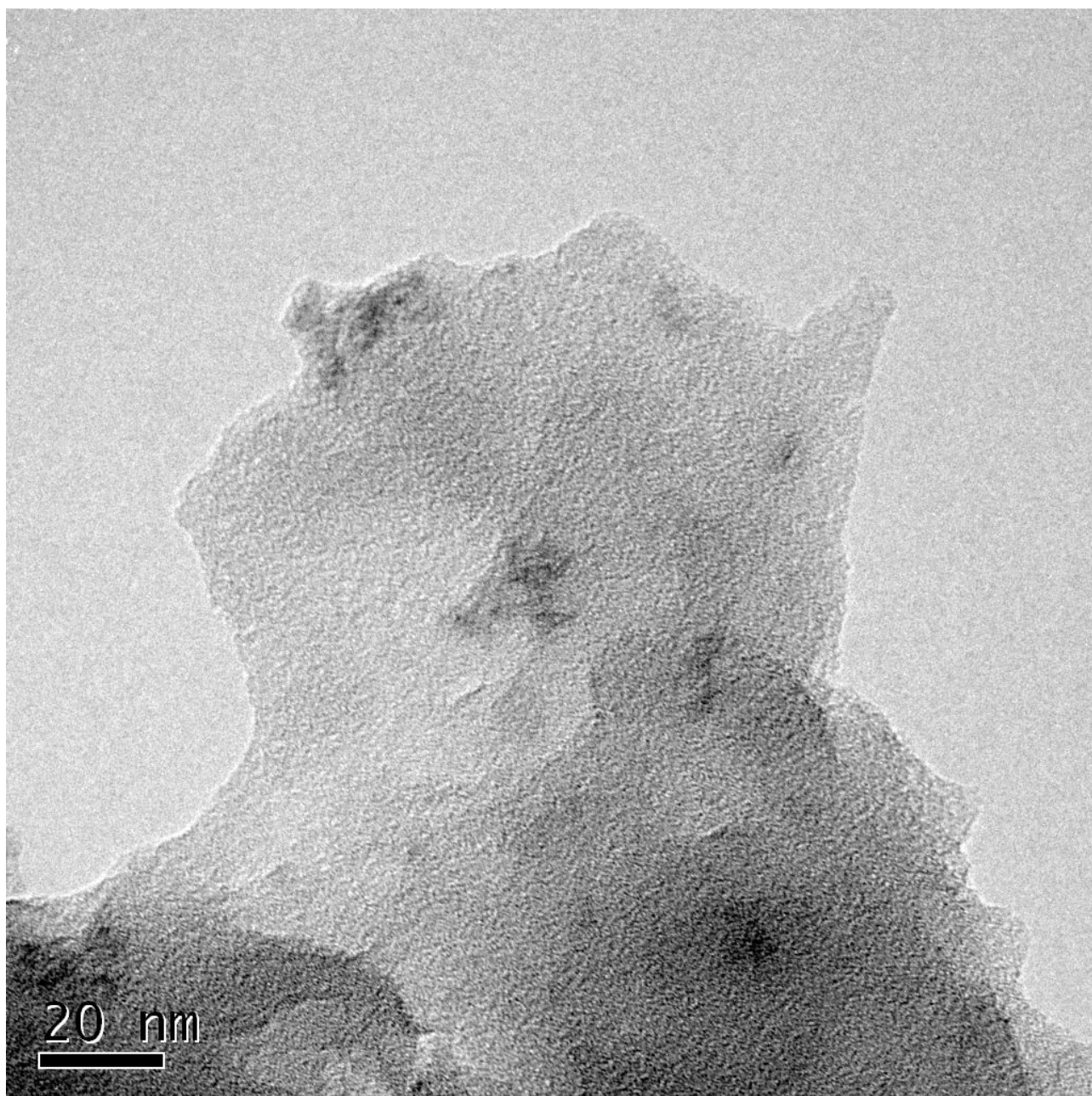


Figure S9. TEM of exfoliated g-C₃N₄

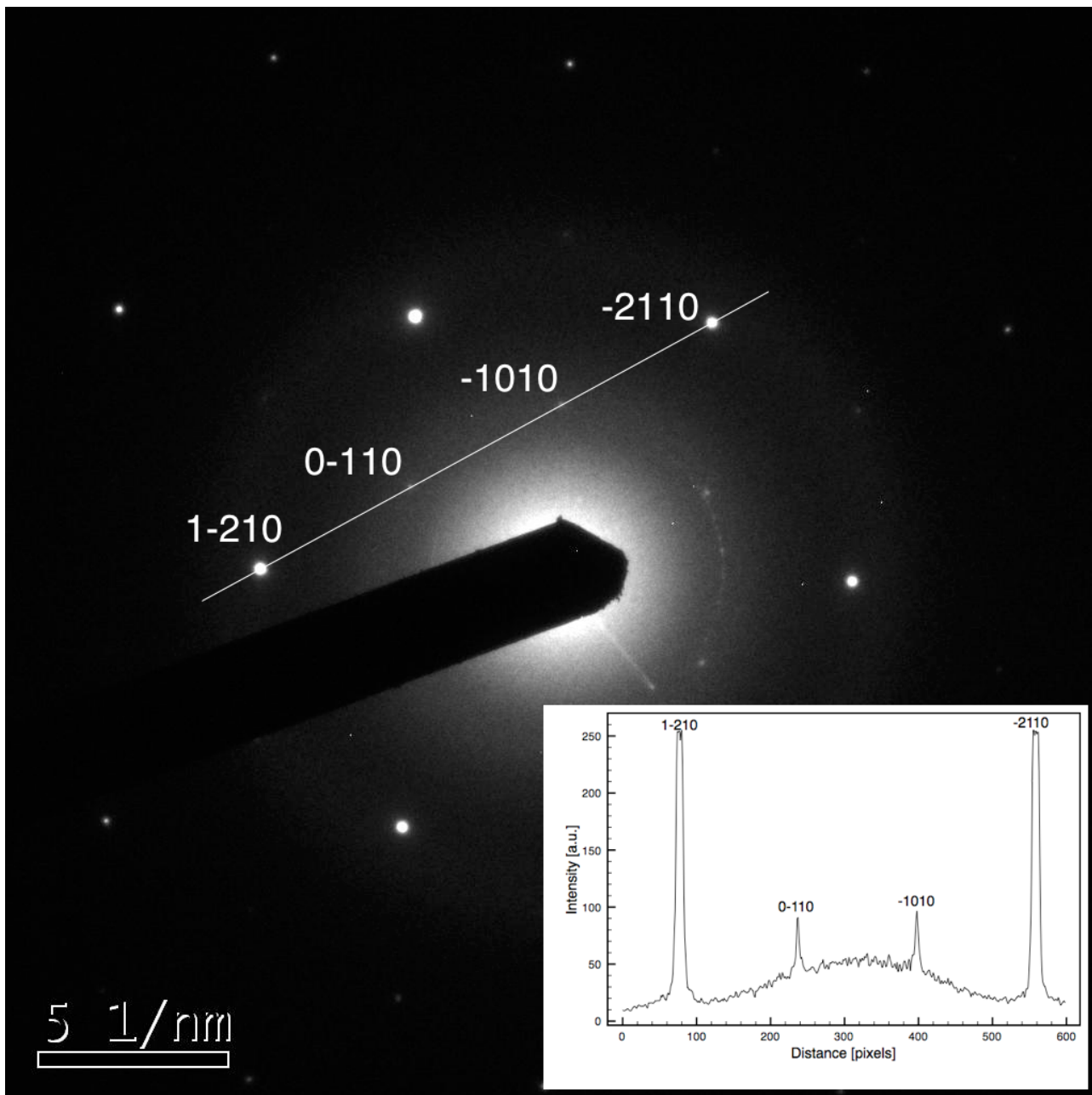


Figure S10. SAED of exfoliated g-C₃N₄