

Figure S1

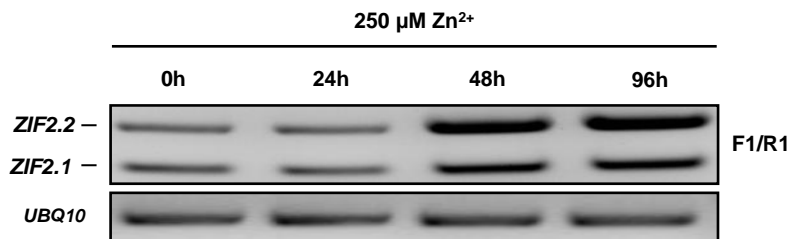


Figure S1 Expression kinetics of the *ZIF2.1* and *ZIF2.2* splice variants under zinc toxicity. RT-PCR profile of *ZIF2.1* and *ZIF2.2* expression in roots of 7-d old wild-type (Col-0) seedlings challenged for 0, 24, 48 or 96h with 250 $\mu\text{M Zn}$. The location of the F1 and R1 primers used is shown in Figure 2A. Expression of the *UBQ10* gene was used as a loading control. Results are representative of two independent experiments.