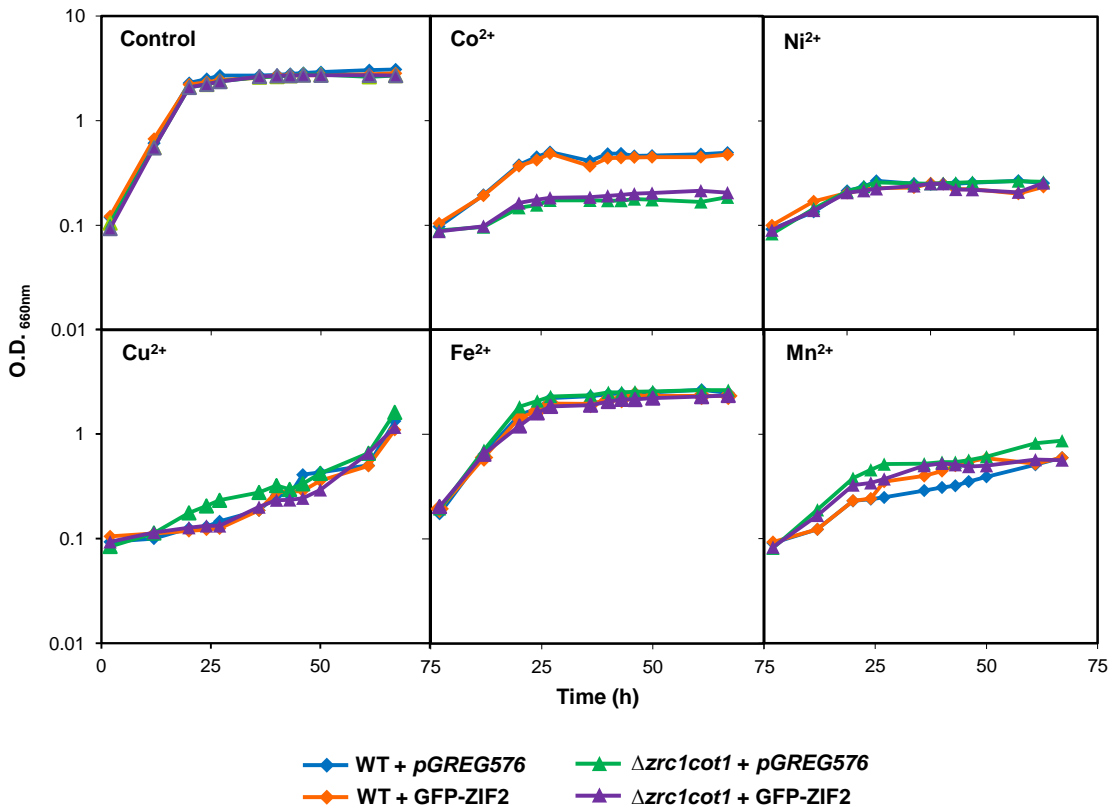
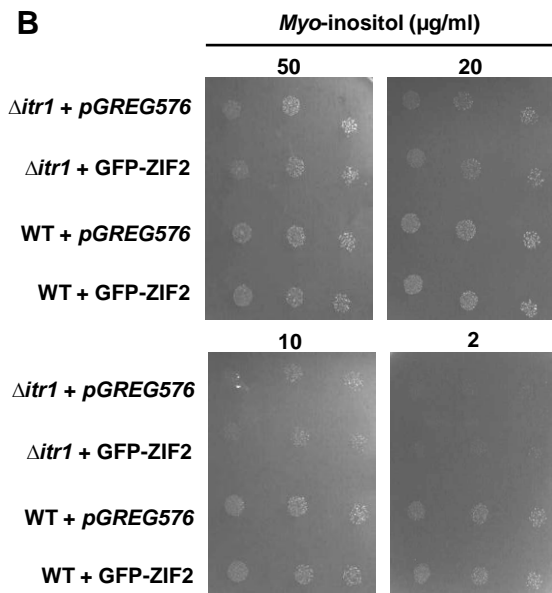


# Figure S3

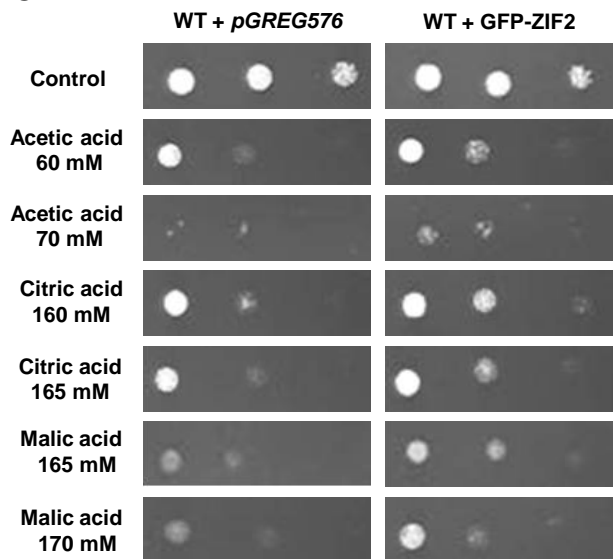
**A**



**B**



**C**



**Figure S3** Further phenotypical characterisation of yeast cells expressing the *Arabidopsis* ZIF2 transporter. **(A)** Comparison of the growth curves of non-adapted wild-type and  $\Delta zrc1cot1$  mutant yeast cells, harbouring either the cloning vector *pGREG576* or the GFP-ZIF2-encoding *pGREG576\_ZIF2* plasmid, in liquid medium supplemented with 3.5 mM  $\text{CoSO}_4$ , 1 mM  $\text{NiSO}_4$ , 1 mM  $\text{CuCl}_2$ , 40 mM  $\text{FeSO}_4$  or 25 mM  $\text{MnCl}_2$ . Results are representative of at least two independent experiments. **(B-C)** Susceptibility to *myo*-inositol **(B)** and weak acids **(C)** of wild-type or  $\Delta itr1$  mutant yeast cells, harbouring either the cloning vector *pGREG576* or the GFP-ZIF2-encoding *pGREG576\_ZIF2* plasmid, determined by spotting dilution series of cell suspensions (1, 1:5, and 1:10).