

Figure S4

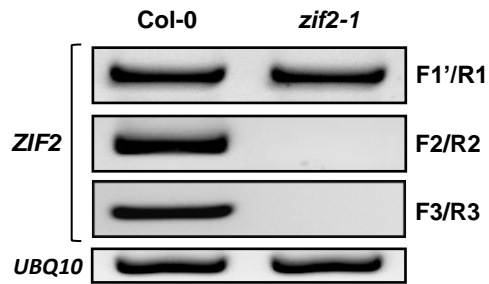


Figure S4 *ZIF2* expression in the *Arabidopsis zif2-1* mutant. RT-PCR analysis of *ZIF2* expression in 14-d old wild-type (Col-0) and mutant (*zif2-1*) seedlings. The location of the F1', R1, F2, R2, F3 and R3 primers used is shown in Figure 2A. Expression of the *UBQ10* gene was used as a loading control. Results are representative of three independent experiments.