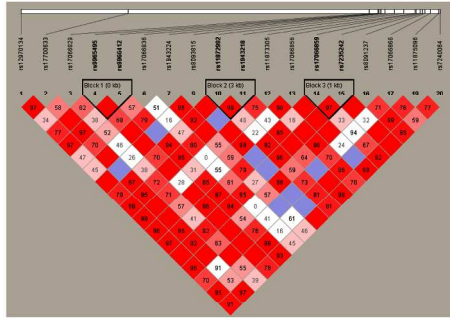
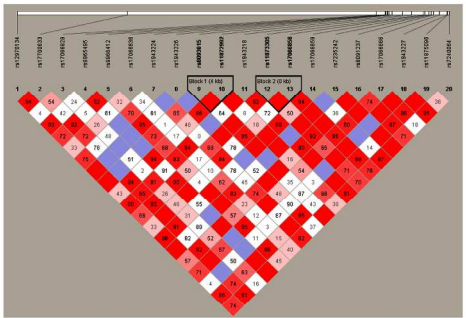


Online Supplementary Table 1. SNP identities and frequencies.

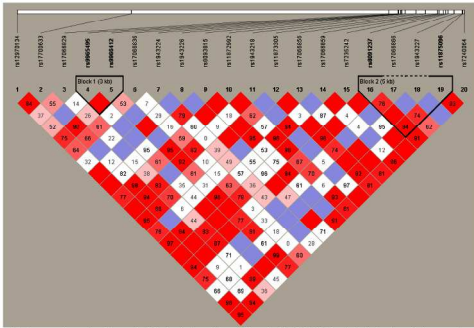
SNP	Minor(major) allele	Minor allele freq [n (%)]	Genotype Frequency (n, %)		
rs1943226	G(T)	492 (7)	TT (2976, 87)	GT (430, 13)	GG (31, 1)
rs11875096	C(T)	283 (4)	TT (3167, 92)	CT (265, 8)	CC (9, 0)
rs1943224	G(A)	74 (1)	AA (3353, 98)	GA (68, 2)	GG (3, 0)
rs7235242	C(A)	94 (1)	AA(3351, 97)	CA (86, 2)	CC (4, 0)
rs11872992	A(G)	848 (12)	GG(2646, 77)	AG (720, 21)	AA (64, 2)
rs8093815	T(C)	2312 (34)	CC (1549, 45)	TC (1460, 43)	TT (426, 12)
rs17066856	C(T)	1329 (19)	TT (2319, 68)	CT (885, 26)	CC (222, 6)
rs17066836	G(C)	224 (3)	CC (3214, 94)	GC(216, 6)	GG (4, 0)
rs1943227	G(A)	703 (10)	AA (2772, 81)	GA (611, 18)	GG (46, 1)
rs1943218	C(T)	2085 (30)	TT (1691, 49)	CT (1403, 41)	CC (341, 10)
rs17066829	A(T)	2709 (39)	TT (1280, 37)	AT (1601, 47)	AA (554, 16)
rs9966412	A(G)	1533 (22)	GG (2171, 63)	AG (981, 29)	AA (276, 8)
rs17066859	A(G)	804 (12)	GG (2713, 79)	AG(642, 19)	AA (81, 2)
rs9965495	T(C)	2467 (36)	CC (1441, 42)	TC (1523, 44)	TT(472, 14)
rs12970134	A(G)	1558(23)	GG(2056,60)	AG(1172,34)	AA(193,6)
rs17700633	T(C)	1890(27)	CC(1812,53)	CT(1364,40)	TT(263,8)
rs11873305	G(T)	589(9)	TT(2914,85)	GT(463,13)	GG(63,2)
rs8091237	G(C)	1264(18)	CC(2306,67)	CG(1002,29)	GG(131,4)
rs17066866	T(A)	392(6)	AA(3081,90)	AT(326,9)	TT(33,1)
rs7240064	T(C)	1015(15)	TT(2507,73)	CT(841,24)	CC(87,3)



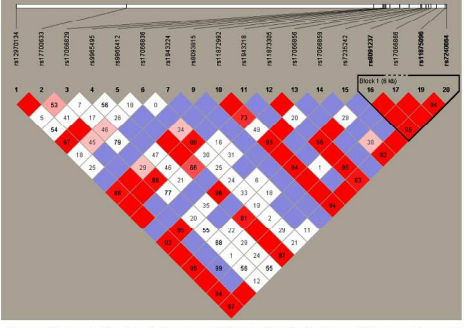
Online supplementary figure 1a: Pairwise linkage disequilibrium plot for 20 MC4R variants in European white ancestry participants from the Diabetes Prevention Program. Numbers within boxes are r. Blank boxes indicate presence of monomorphic variants.



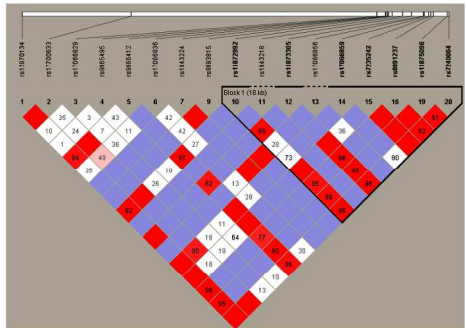
Online supplementary figure 1b: Pairwise linkage disequilibrium plot for 20 MC4R variants in African American ancestry participants from the Diabetes Prevention Program. Numbers within boxes are r. Blank boxes indicate presence of monomorphic variants.



Online supplementary figure 1c: Pairwise linkage disequilibrium plot for 20 MC4R variants in American Indian ancestry participants from the Diabetes Prevention Program. Numbers within boxes are r. Blank boxes indicate presence of monomorphic variants.



Online supplementary figure 1d: Pairwise linkage disequilibrium plot for 20 MC4R variants in European white ancestry participants from the Diabetes Prevention Program. Numbers within boxes are r. Blank boxes indicate presence of monomorphic variants.



Online supplementary figure 1e: Pairwise linkage disequilibrium plot for 20 MC4R variants in European white ancestry participants from the Diabetes Prevention Program. Numbers within boxes are r. Blank boxes indicate presence of monomorphic variants.

70x80mm (1000 x 1000 DPI)