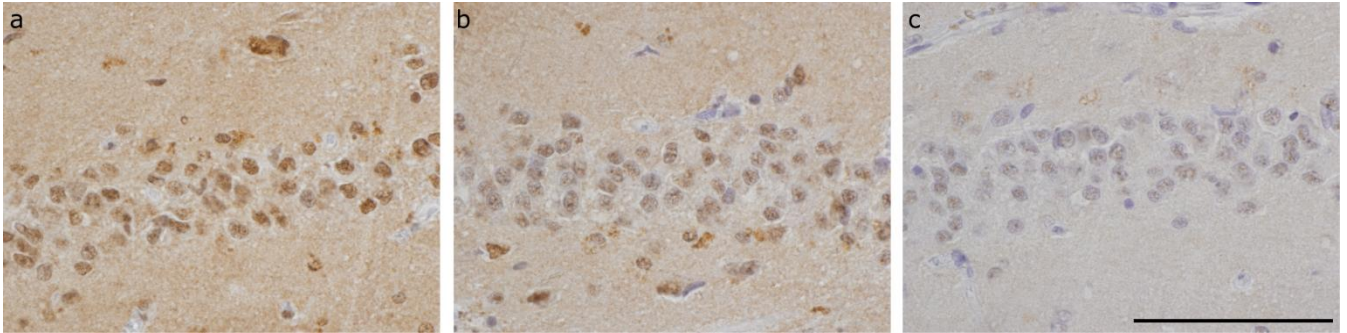


**Fig. 1S** Representative ELISA results for a newly developed MAb. Representative data from a sandwich ELISA using MAb 205 as capture and a rabbit polyclonal antibody to the C-terminus of TDP-43 using human rTDP-43 is shown. The lower limit of detection of human rTDP-43 for this ELISA is <25 pg/mL and the linear range for this ELISA is shown in the insert



**Fig. 2S** Serial Dilutions of MAb 138 show minimal nuclear reactivity. Shown here are IHC results of serial dilutions of purified MAb 138 IgG from 0.3 µg/ml (a), 0.1 µg/ml (b) and 0.03 µg/ml (c) in normal control human dentate gyrus. Note that when this IgG is used at a concentration of 0.03 µg/ml, both the background neuropil staining and nuclear staining are eliminated while at this concentration MAb 138 recognizes pathological TDP-43 inclusions as shown in Fig. 4. Scale bar= 100 µm

**Table-S1. Summary of patient demographics**

<b>Neuropathological diagnosis</b>	<b>Age at Death, years</b>	<b>Sex</b>	<b>PMI, hours</b>	<b>Brain-weight, grams</b>	<b>Fixative</b>
ALS	55	F	6	1480	NBF
FTLD-TDP type A	49	F	6	591	NBF
FTLD-TDP type B*	73	F	11	1033	NBF
FTLD-TDP type C	76	M	NA	1200	NBF
FTLD-TDP type D	70	F	6	1022	ETOH
Normal Control	68	M	21	1330	NBF
Alzheimer Disease Control	85	M	24	1440	ETOH

Abbreviations: PMI= post-mortem interval, NA= not available, ETOH= 70% ethanol with 150 mmol sodium chloride, NBF= 10% neural-buffered formalin.

\*This case had secondary diagnoses of Transitional Stage Lewy body disease and hippocampal sclerosis.