

Supplemental Material to:

Dongying Li, E Wolfgang Kuehn and Rytis Prekeris

**Kinesin-2 mediates apical endosome transport during
epithelial lumen formation**

Cellular Logistics 2014; 4(1)

<http://dx.doi.org/10.4161/cl.28928>

**[http://www.landesbioscience.com/journals/cellularlogistics/
article/28928/](http://www.landesbioscience.com/journals/cellularlogistics/article/28928/)**

Figure S1. Mapping FIP5-binding domain. GST pull-down assays show that FIP5 binds to GST- Kif3B(524-747), GST- Kif3B(593-747), and GST- Kif3B(621-747). The schematic representation of this binding data is shown in **Figure 1B**.

Figure S2. Kif3A knock-down does not affect overall distribution of microtubules and Trans-Golgi Network (TGN). MDCK-shKif3A#1 cells were grown in Matrigel for 24 hours in the presence or absence of doxycycline. Cells were then fixed and immunostained for α -tubulin and VAMP4 (TGN marker). Images in (A) and (D) show cells in interphase. Images in (B) show cells in metaphase. Images in (C) show cells in late anaphase.

Figure S1

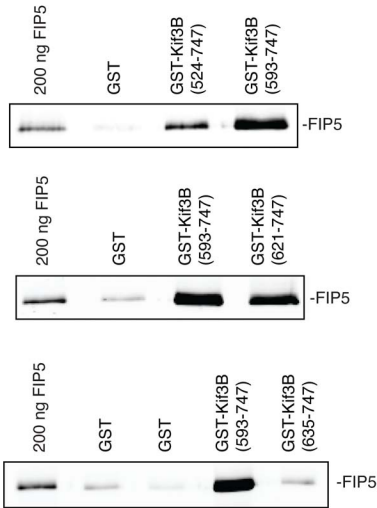


Figure S2

