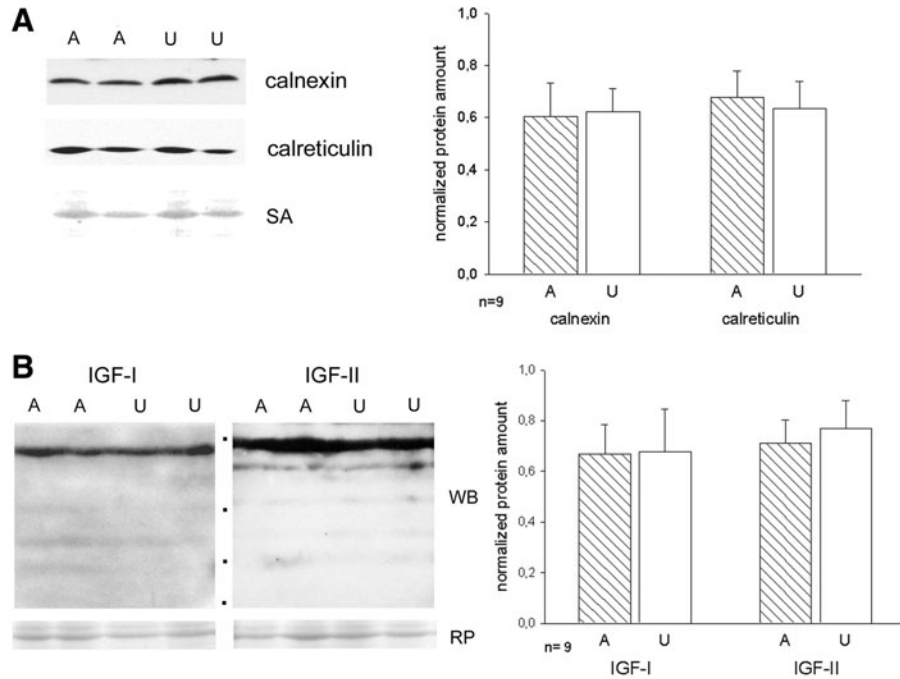


## Supplementary Data



**SUPPLEMENTARY FIG. S1. Endoplasmic reticulum chaperones and IGFs protein levels in ambulatory (A) and unloaded (U) soleus muscles.** Representative western blots from 6% to 15% gradient polyacrylamide denaturing gels loaded with 100  $\mu$ g of whole muscle homogenates. Reference for sample loading is shown by RP staining for SA. *n* indicates the number of muscles evaluated in each group. **(A)** Left side: Representative immunostaining for calnexin and calreticulin. Right side: bars and error bars correspond to mean and SE of normalized densitometric values of samples analyzed in parallel. **(B)** Left side: Representative immunostaining for IGF-I and IGF-II. Dots indicate mobility of molecular weight markers (from the top 31,000; 21,000; 14,000 and 7000, Broad Range; BioRad Lab., Rome, Italy). Right side: bars and error bars correspond to mean and SE of normalized densitometric values of samples analyzed in parallel. IGF, insulin-like growth factor; RP, red ponceau; SA, serum albumin; SE, standard error.