

## Supplemental Figures

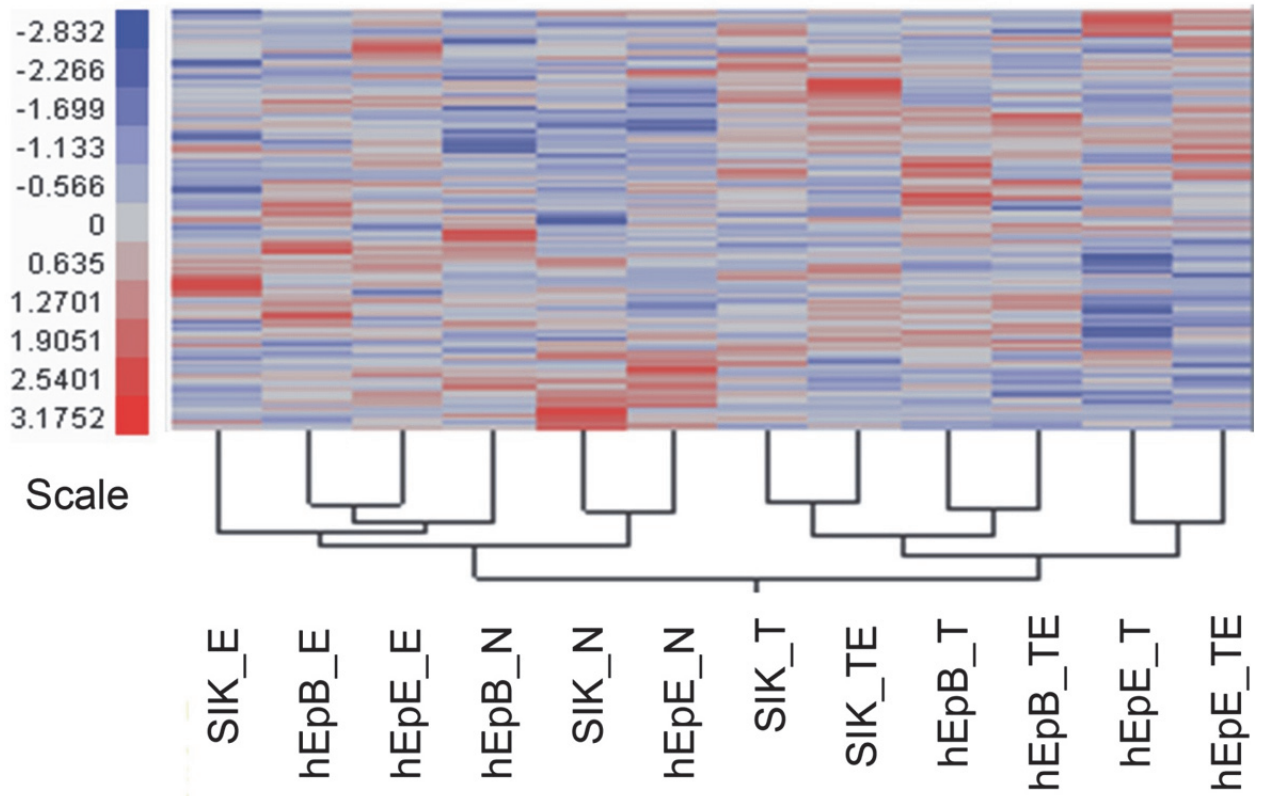


Figure S1. Hierarchical clustering plot of significant differentially expressed proteins from ANOVA. Samples are labeled according to cell strain and treatment with E (EGF), T (TCDD), TE (TCDD+EGF) or neither (N). The color scale on the left indicates the intensity range.

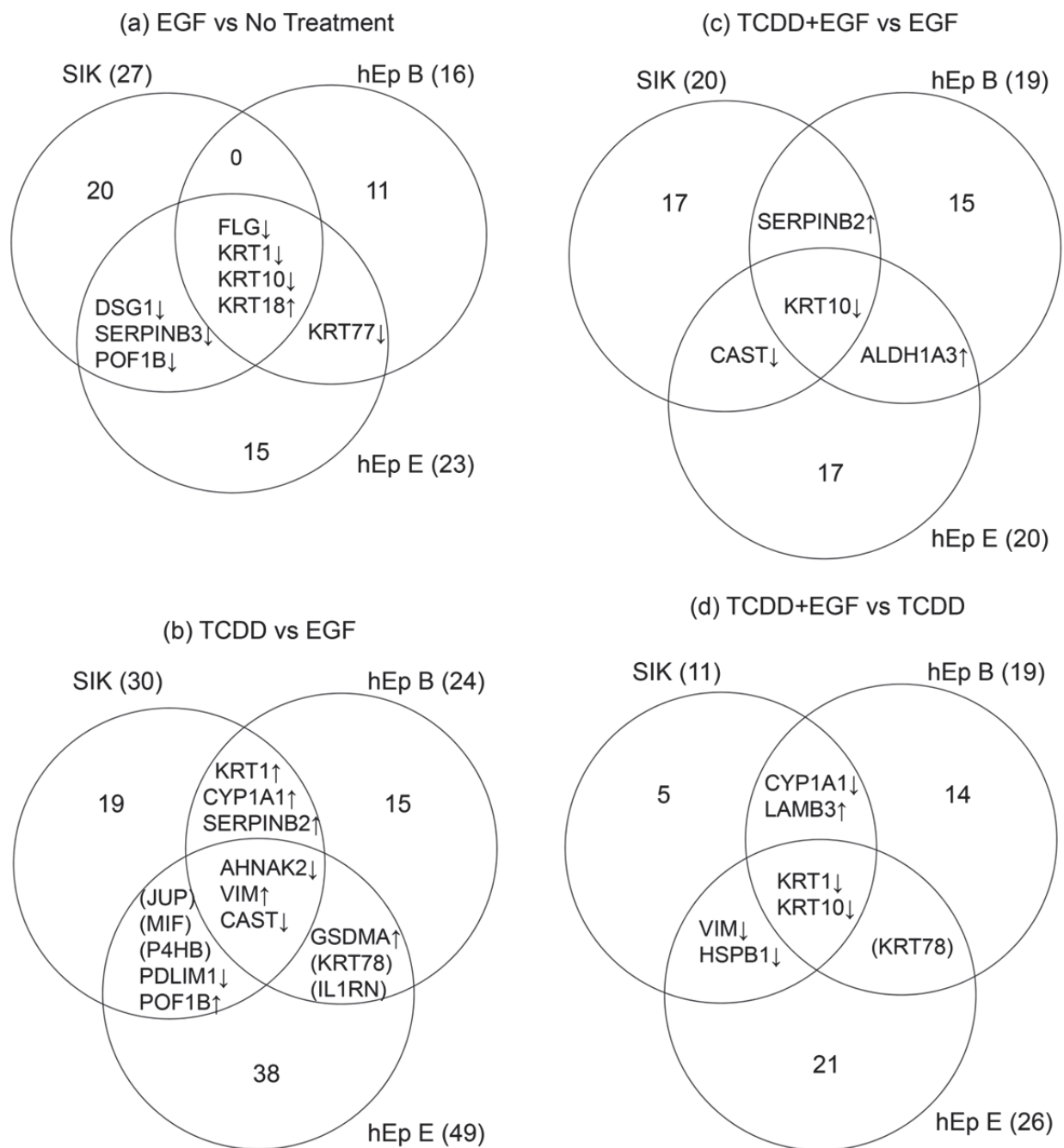


Figure S2. Common changes in protein level in pairwise comparisons. Illustrated are (a) treatment with EGF alone vs no treatment, (b) TCDD alone vs EGF alone, (c) Treatment with EGF alone vs TCDD+EGF and (d) TCDD alone vs TCDD+EGF. Arrows show the direction of change in the first treatment condition compared to the second. Proteins in parentheses showed an increase in one cell strain and a decrease in another strain.