

**A Serendipitous Discovery of Isomotuporin-Containing Sponge Populations of
*Theonella swinhoei***

[Motuporin_v 4.0]

Christopher J. Wegerski,[†] Joshua Hammond,[†] Karen Tenney,[†] Teatulohi Matainaho,[§] and Phillip Crews^{*†}

[†]*Department of Chemistry and Biochemistry & Institute of Marine Sciences, University of California, Santa Cruz, California 95064 USA* [§]*Discipline of Pharmacology, School of Medicine and Health Sciences, University of Papua New Guinea, National Capital District, Papua New Guinea.*

Supporting Information

Table of Contents

	Page
Figure S1. ¹ H NMR comparison of motuporin (1) and <i>isomotuporin</i> (2).....	S2
Figure S2. Representation of gCOSY, gHMBC, and ¹⁵ N-HMBC correlations for <i>isomotuporin</i>	S3
Figure S3. Advanced Marfey analysis of 2 , (a) hydrolysis product of 2 derivatized with L-FDLA and (b) hydrolysis product of 2 derivatized with both D-FDLA and L-FDLA.....	S4
Figure S4. ¹ H NMR of <i>isomotuporin</i> (2).....	S5
Figure S5. ¹ H NMR of <i>isomotuporin</i> B (3).....	S6
Figure S6. ¹ H NMR of <i>isomotuporin</i> C (4).....	S7
Figure S7. ¹ H NMR of <i>isomotuporin</i> D (5).....	S8
Figure S8. Structures of compounds contained in Table 1.....	S9
Figure S9. Above and underwater photographs of all sponges studied.....	S10

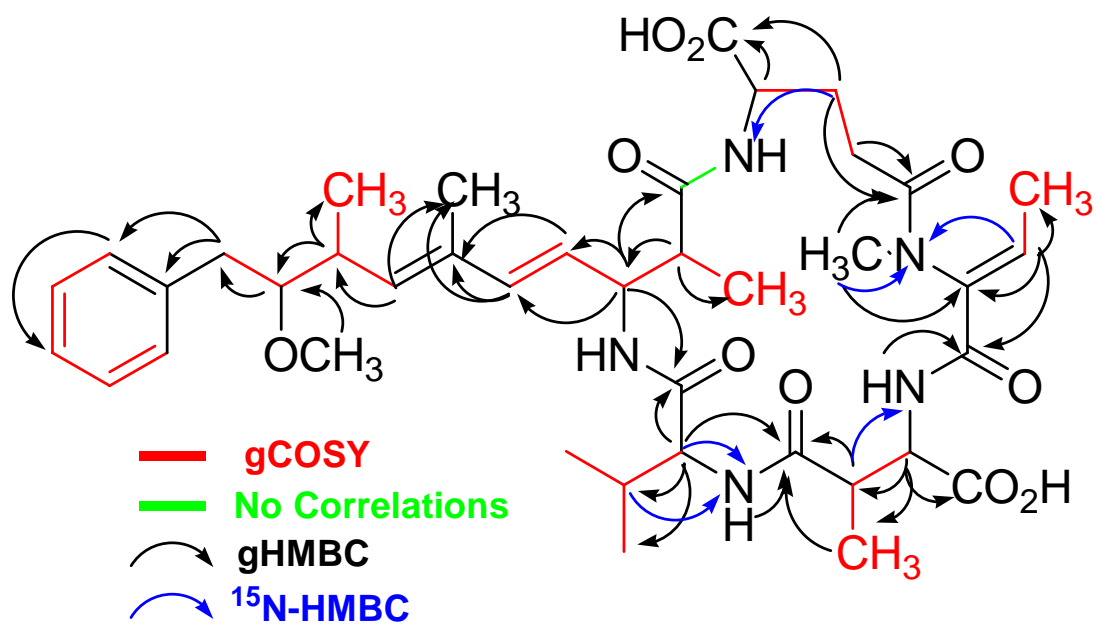


Figure S2. Representation of gCOSY, gHMBC, and ¹⁵N-HMBC correlations for *isomotuporin* (**2**).

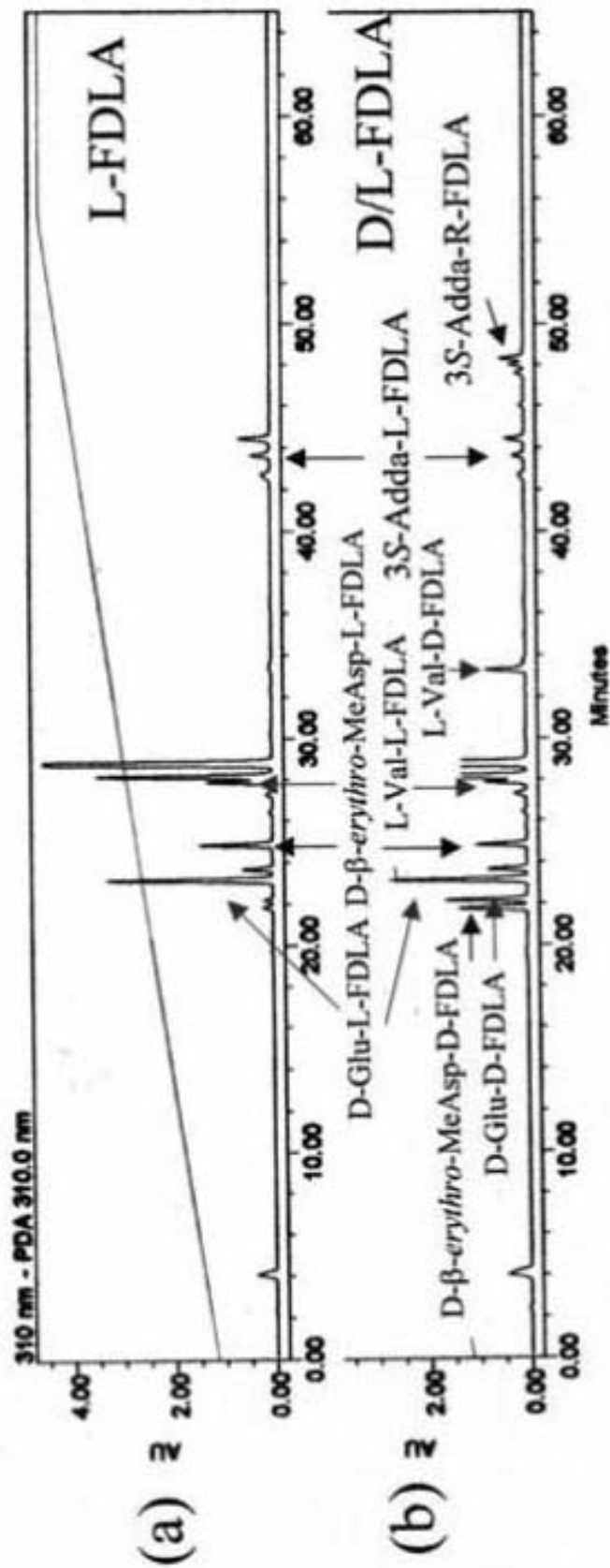


Figure 3. Advanced Marfey analysis of isomtoporin (**2**), (a) hydrolysis product of **2** derivatized with L-FDLA and (b) hydrolysis product of **2** derivatized with both D-FDLA and L-FDLA.

Figure S4. ^1H NMR of *isomotuporin* (**2**).

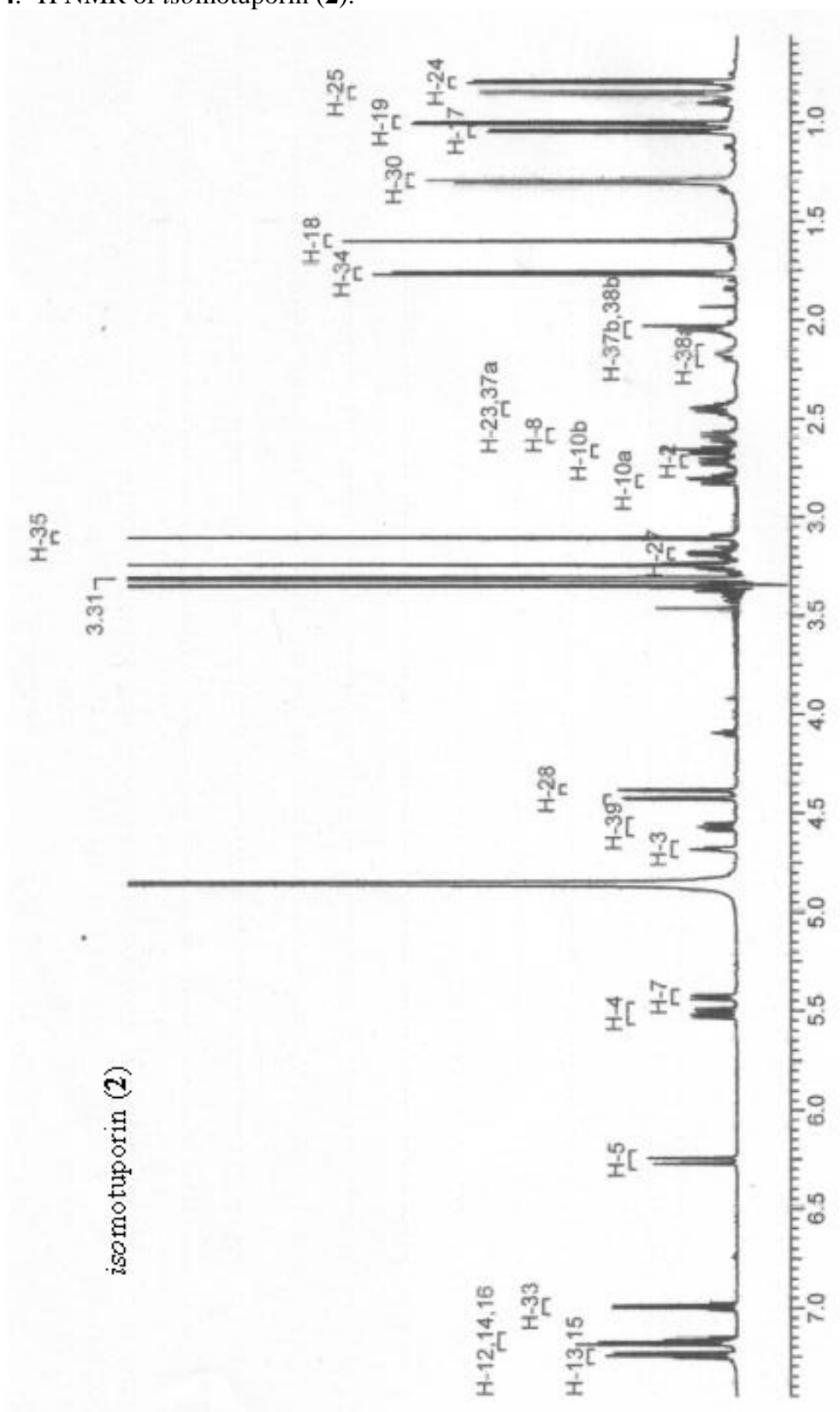


Figure S5. ^1H NMR of *isomotuporin B* (**3**).

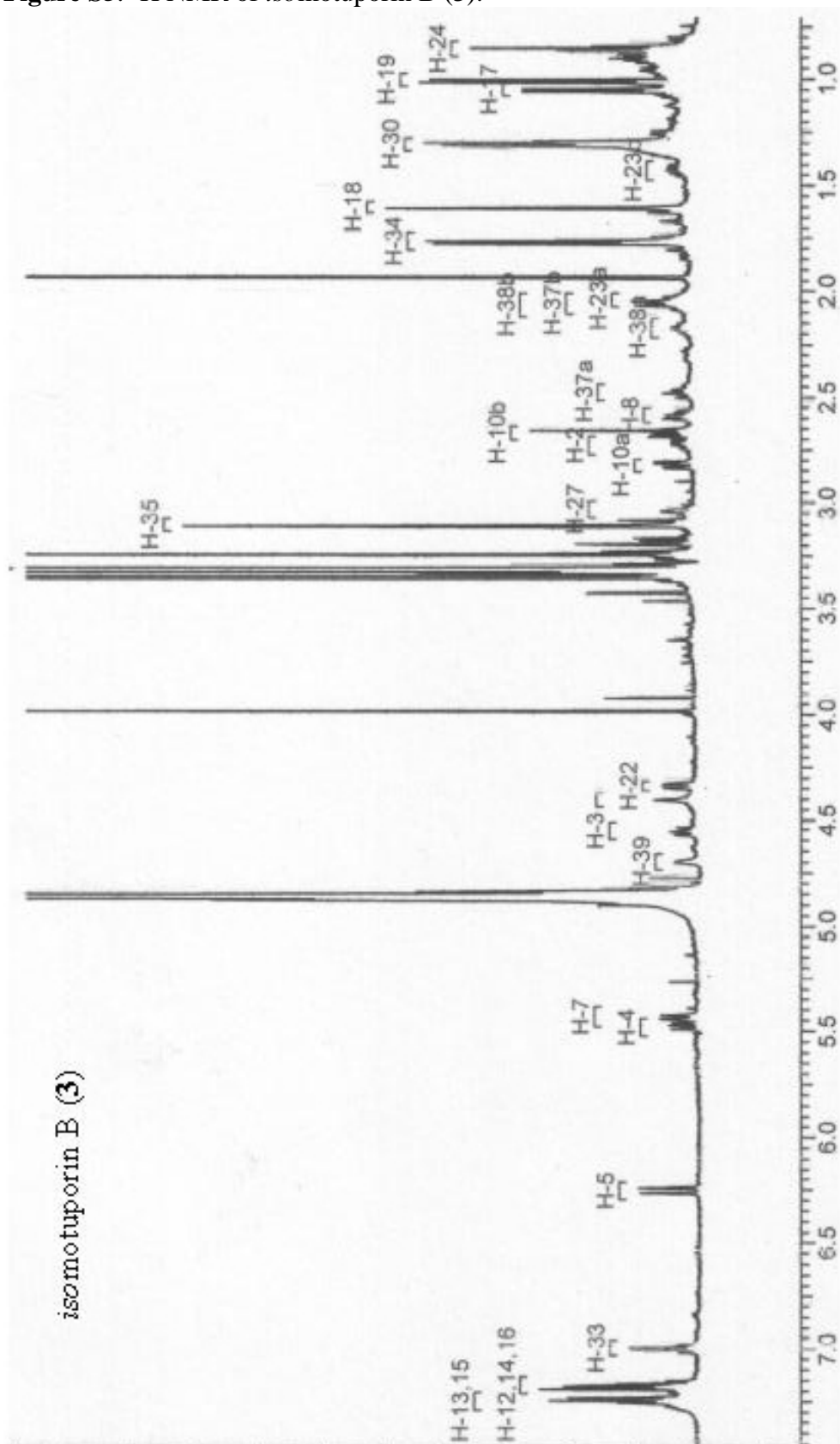


Figure S6. ^1H NMR of Isomotuporin C (4).

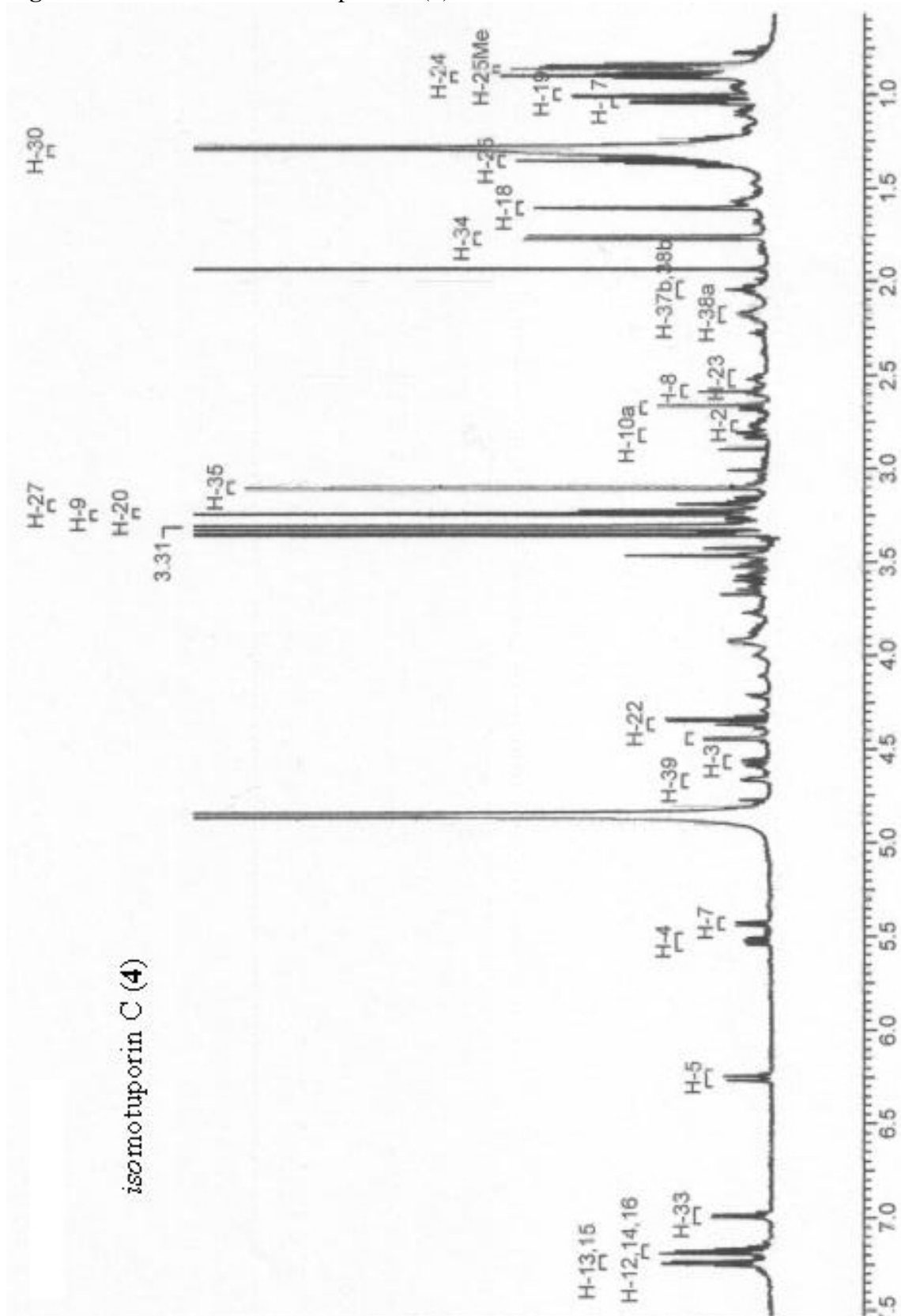
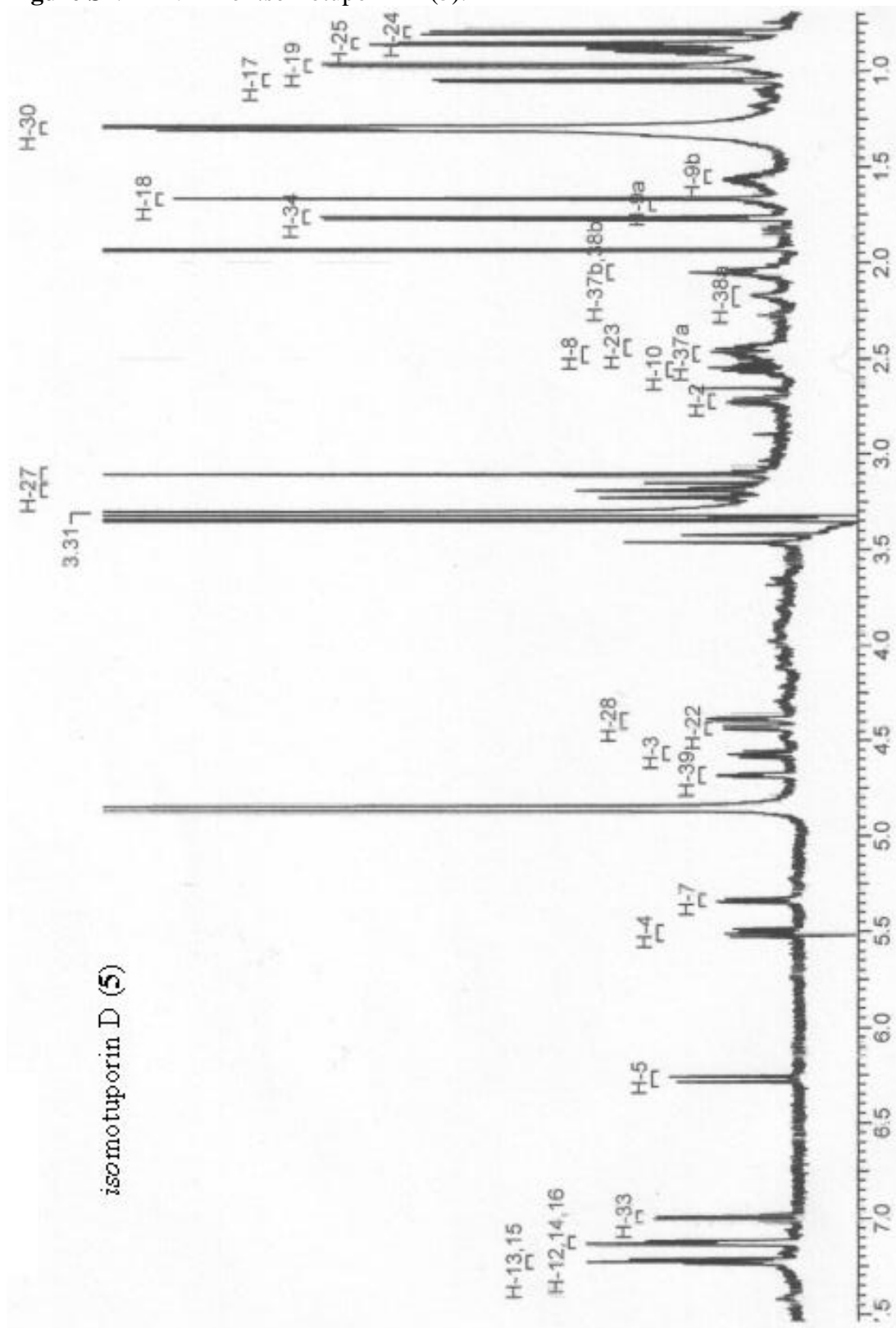


Figure S7. ^1H NMR of isomotuporin D (5).



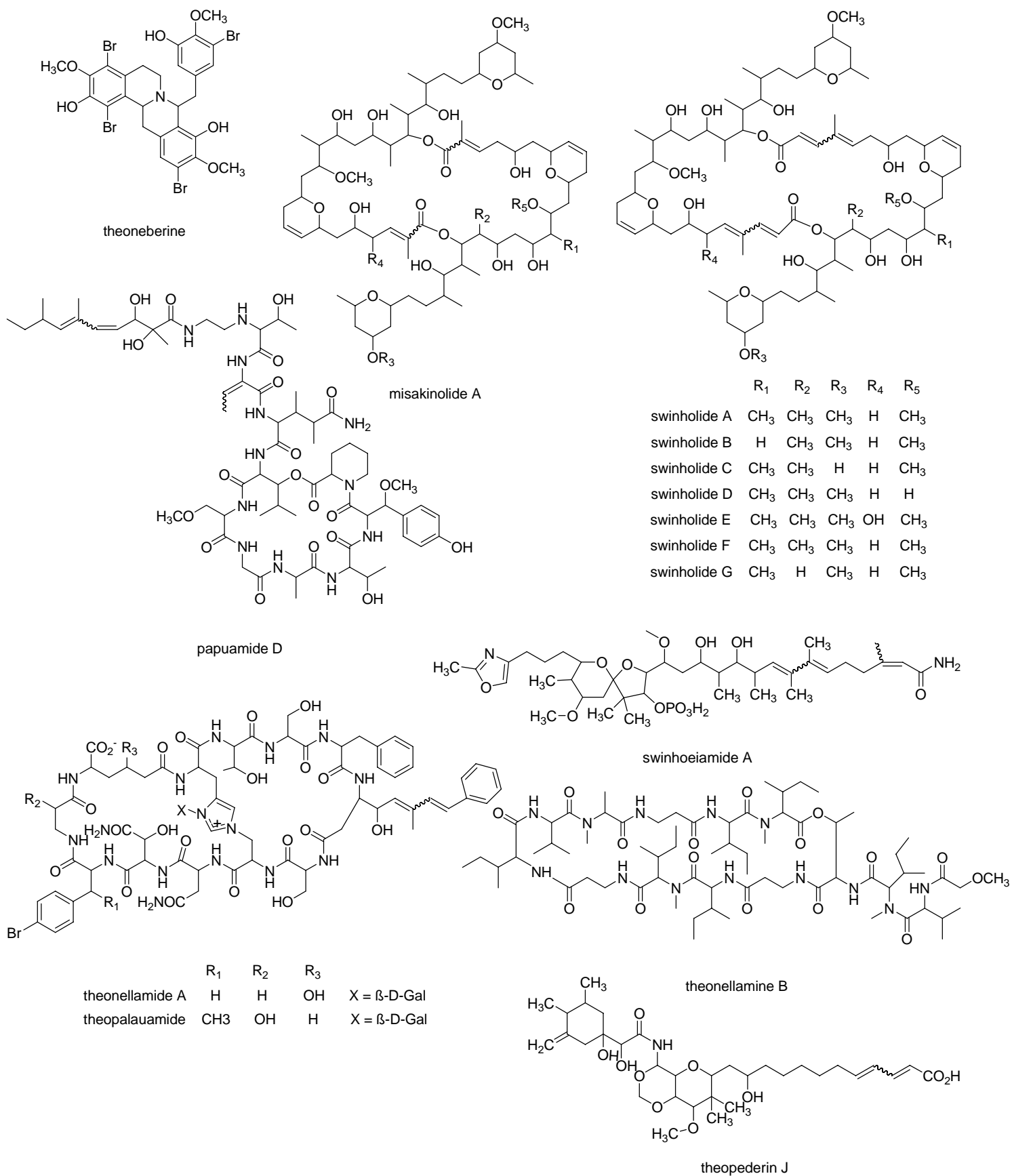
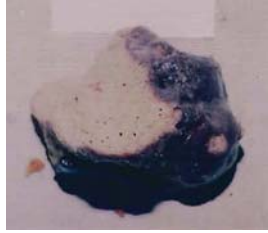


Figure S8. Structures of compounds contained in Table 1.

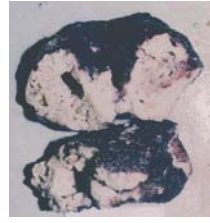
Figure S9A.



94590 AW



94647 AW



94648 AW

NA

**94590 UW
94647 UW
94648 UW**



00342 AW



00342 UW



00356 AW



00356 UW



00365 AW
Figure S9B.

NA

00365 UW



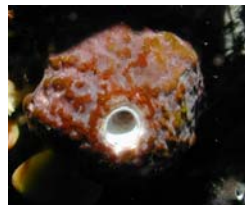
00399 AW



00399 UW



02141 AW



02141 UW



02142 AW

NA

02142 UW



03506 AW



03506 UW



05221 AW



05221 UW



05254 AW



05254 UW



05259 AW



05259 UW