

Supporting Information

for

Adsorbate-Induced Anchoring Transitions of Liquid Crystals on Surfaces Presenting Metal Salts with Mixed Anions

*Jacob T. Hunter and Nicholas L. Abbott**

Department of Chemical and Biological Engineering, University of Wisconsin-Madison, 1415
Engineering Drive, Madison, Wisconsin 53706

* To whom all correspondence should be addressed. Tel: 608-265-5278. Fax: 608-262-5434.

Email: abbott@engr.wisc.edu.

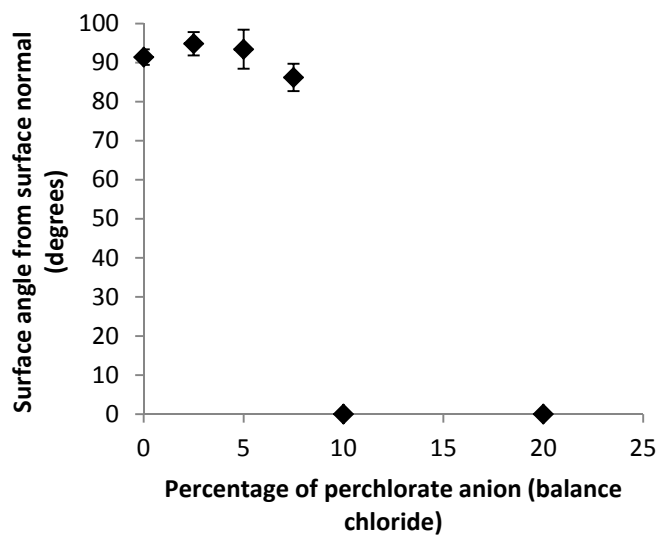


Figure S1: The measured tilt angle of 5CB at solid surfaces decorated with mixtures of copper (II) perchlorate and copper (II) chloride.

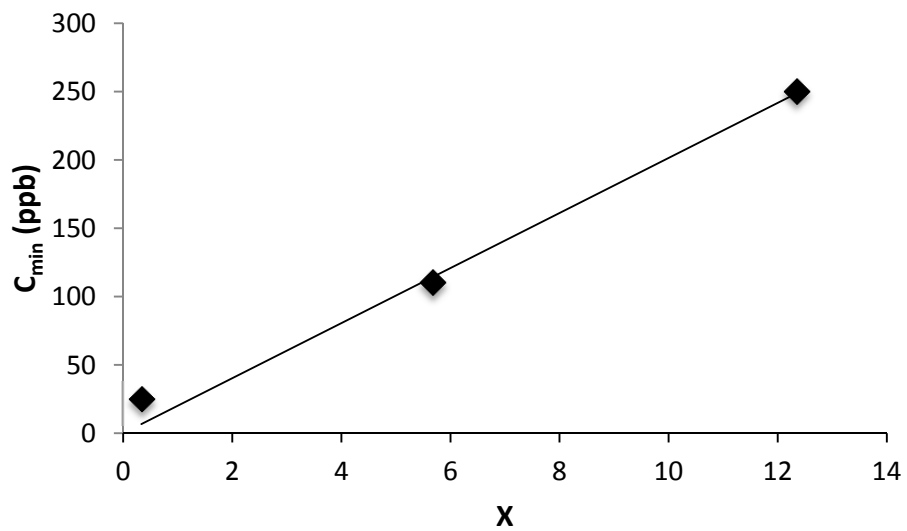


Figure S2: The sensitivity of the LC supported on aluminum (III) to DMMP (data from Figure 6) as it relates to X ($x_{perc} - x_{crit} / x_{crit}$). The data is from the aluminum (III) perchlorate/ nitrate system. The line represents a best fit of a linear line that goes through the origin.