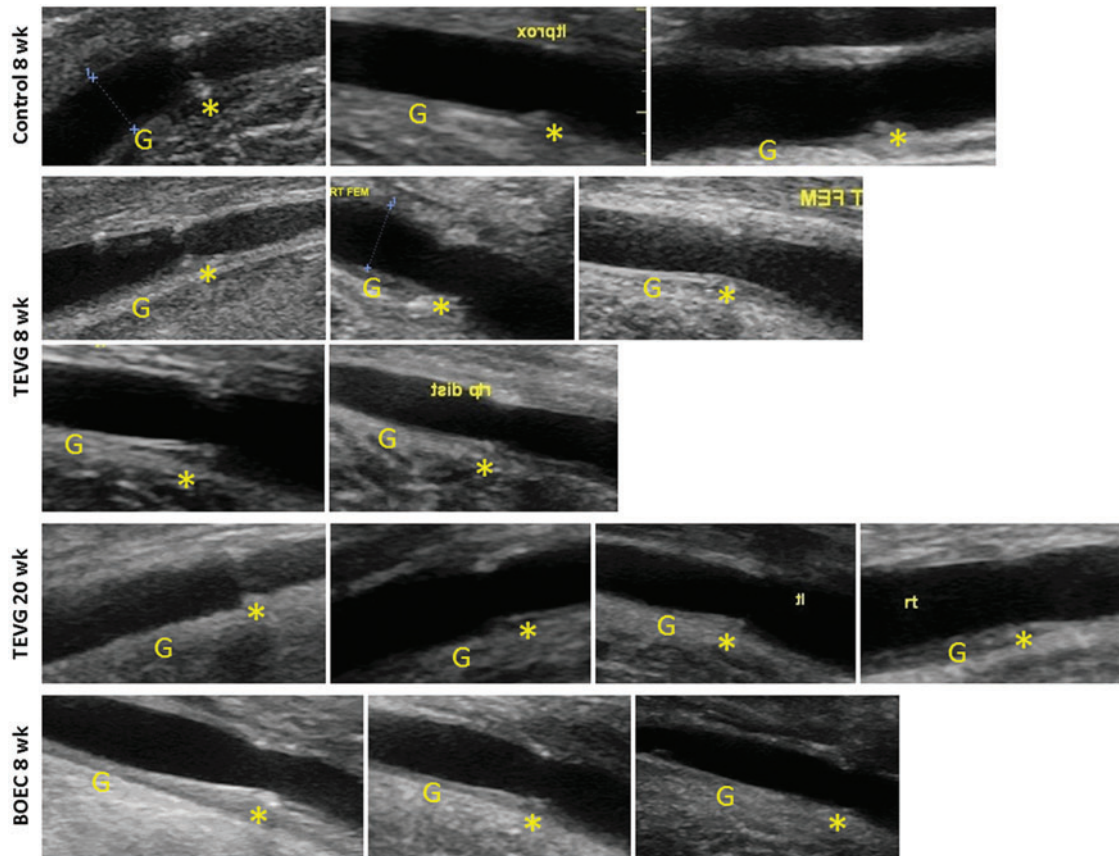


Supplementary Data



SUPPLEMENTARY FIG. S1. Composite images of ultrasounds conducted at 8 and 20 weeks. The top row contains ultrasound images of sham control vessels following 8 weeks of implantation in the femoral artery. The second and third rows contain ultrasound images from each animal acquired at 8 weeks following TEVG implantation. The fourth row contains the ultrasound images acquired at 20 weeks from each of the four grafts implanted for a total of 24 weeks. The bottom panel contains the ultrasound images acquired from blood outgrowth endothelial cell (BOEC)-seeded grafts at 8 weeks, immediately prior to removal of all anticoagulants and 1 week before explantation. Images show the distal end of the TEVG. The label “G” in each image indicates the location of the graft or sham and the symbol * indicates the location of the distal anastomosis. TEVG, tissue-engineered vascular graft.