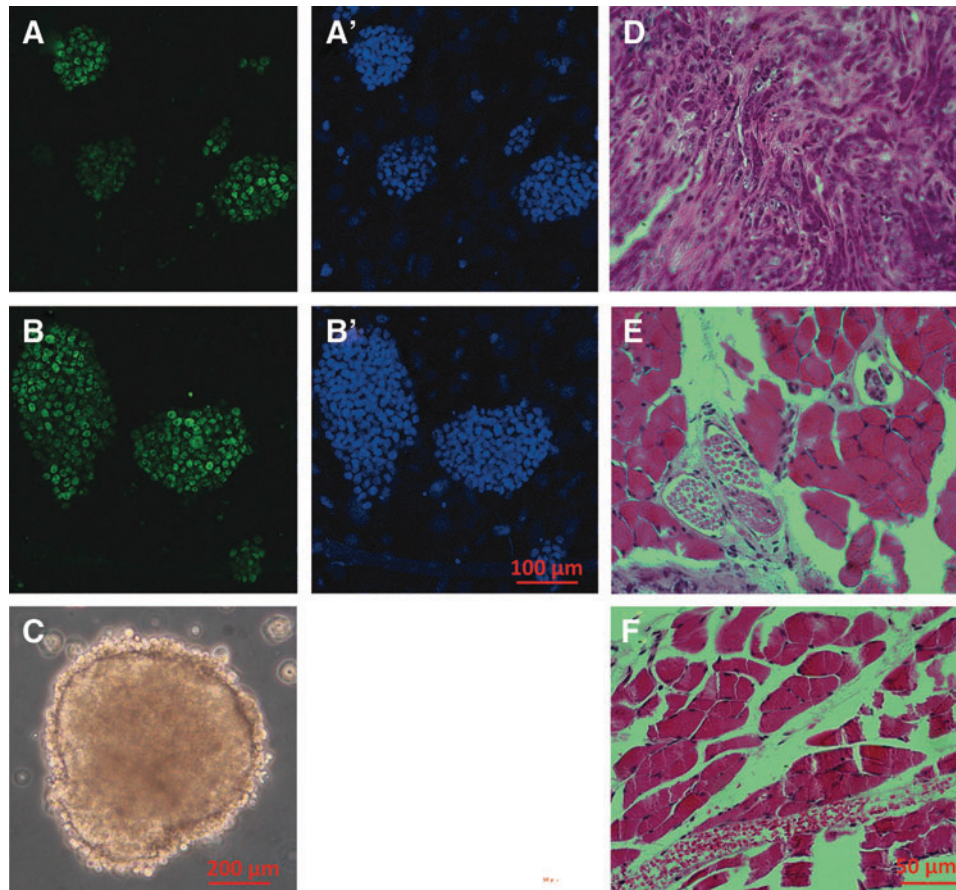


Supplementary Data



SUPPLEMENTARY FIG. S1. Characterization of the porcine iPSCs. (A–B') Immunostaining for pluripotency markers of stable porcine iPSCs. Antibodies to OCT4 and SOX2 were used for immunostaining with fluorescein isothiocyanate (FITC)-conjugated secondary antibody (green), DNA was counterstained with Hoechst 33342 (blue). Scale bar, 100 μm . (C) Embryoid body (EB) formation of porcine iPSCs. Scale bar, 200 μm . (D–F) Histological assessment of teratomas derived from porcine iPSCs. Hepatocyte represents the endoderm (D); neural tissues represent the ectoderm (E); cartilage tissue represents the mesoderm (F). Scale bar, 50 μm .