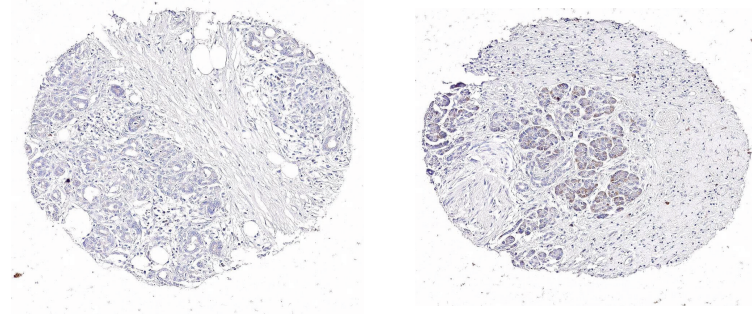
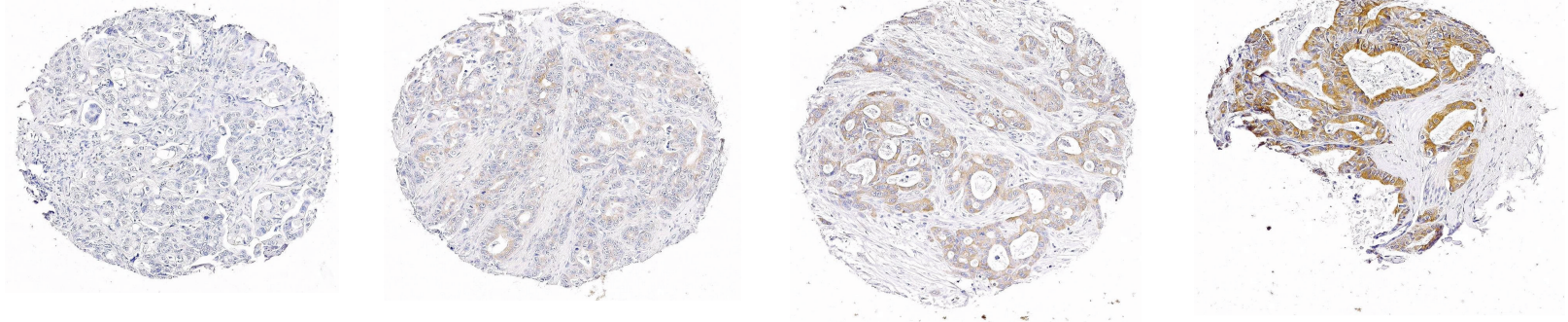


Normal



PDAC



Staining  
intensity:

Negative

Weak

Intermediate

Strong

**Supplemental Figure 6: CLPTM1L protein levels are enhanced in pancreatic adenocarcinomas.** Immunohistochemical staining for CLPTM1L in representative normal-derived samples with negative and weak staining (upper panels) and in representative tumor-derived samples with negative, weak, intermediate or strong staining (lower panel). Normal-derived samples did not stain in the intermediate or strong categories. PDAC: pancreatic ductal adenocarcinoma.