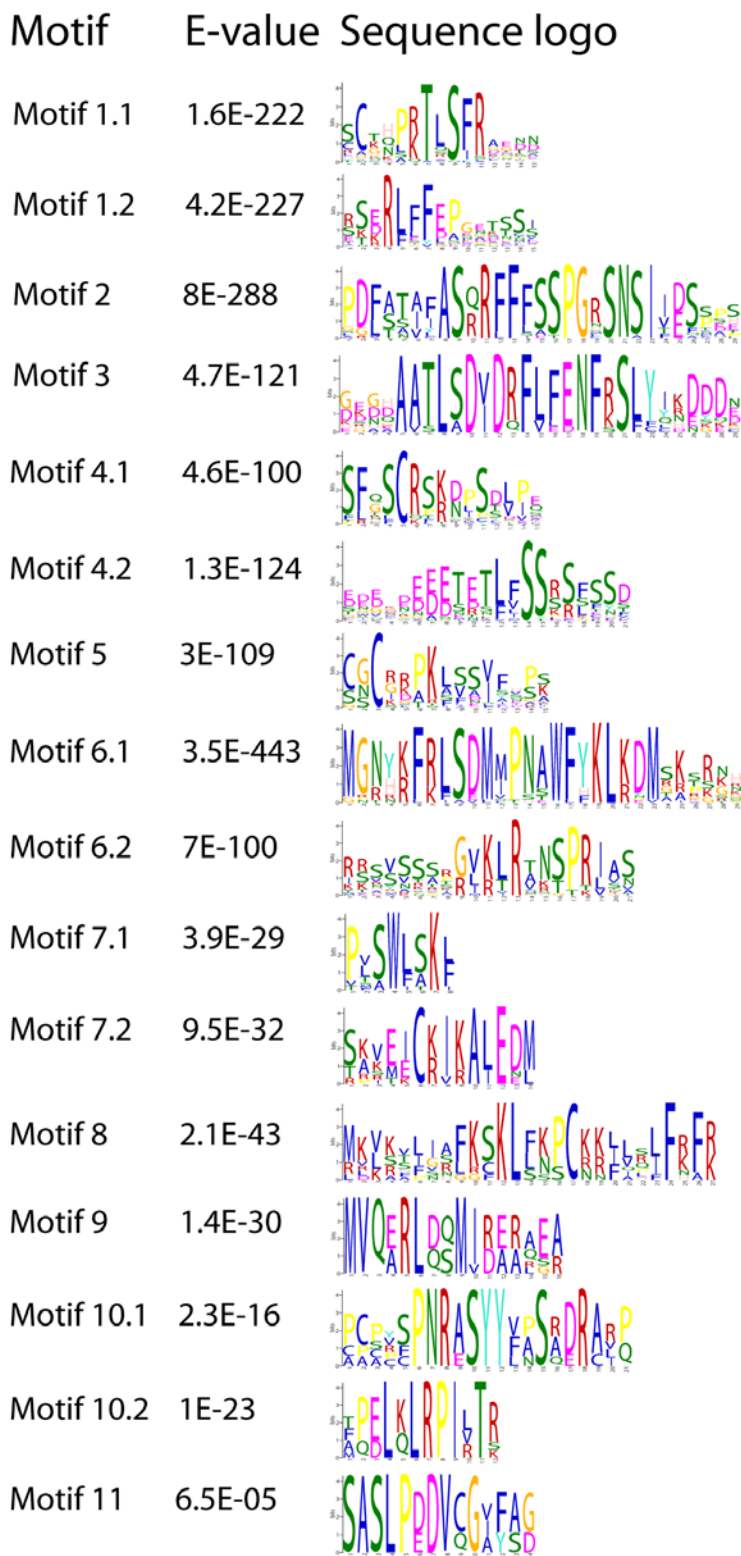


SUPPLEMENTARY DATA

Figure S1: sequence logos and E-values for conserved signature motifs detected by the MEME program.



**FIG. S2.** Bar charts for relative expression levels of each tomato *SIOFP* gene. All expression levels are relative to the expression of tomato *SIOFP9* in sepals. Error bars represent standard error (SE). RT: Root; LF: leaf; SP: Sepal; PT: Petal; SM: Stamens; PS: Pistil; FG: Green fruit; FR: Red mature fruit.

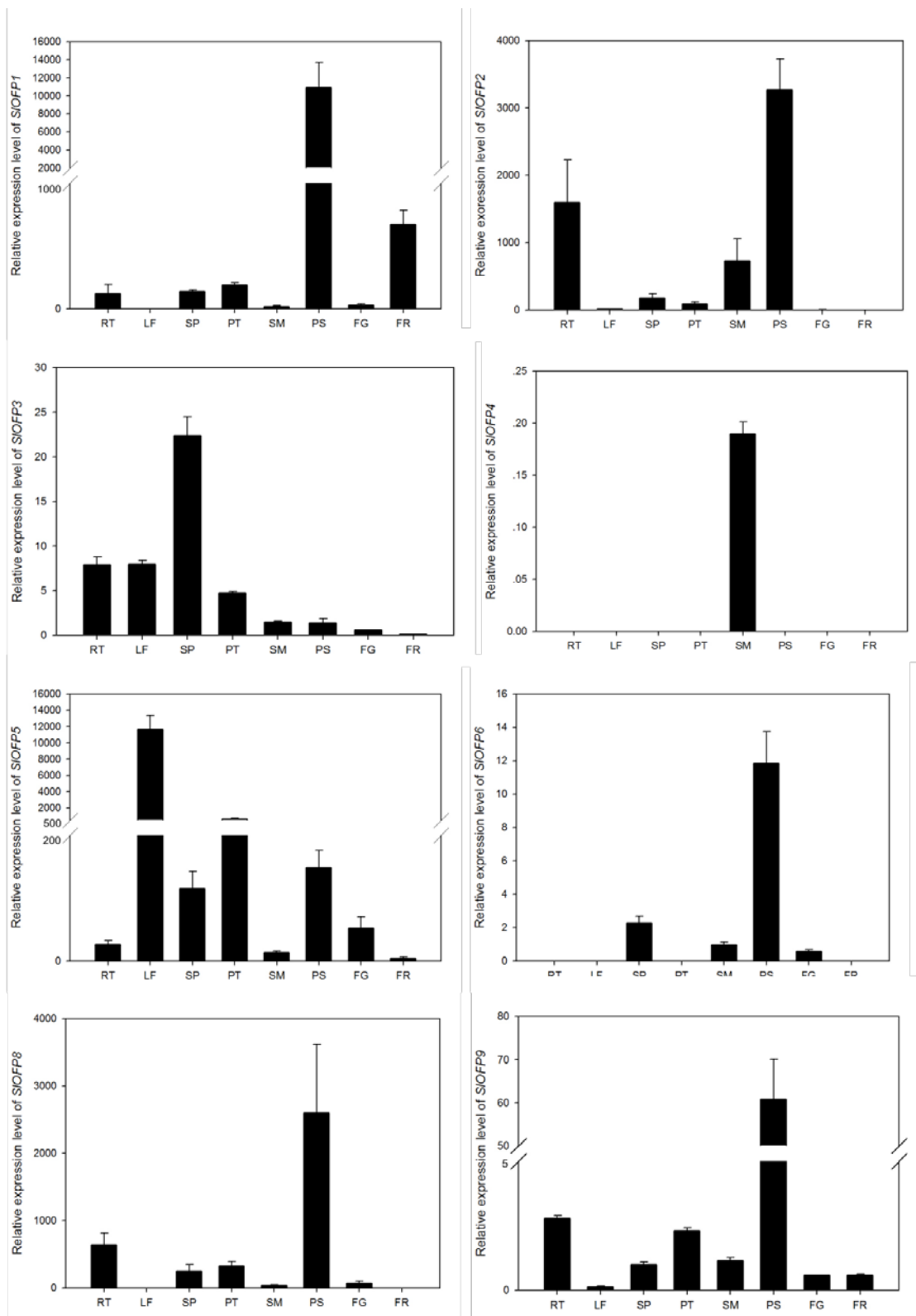


Fig. S2. continued.

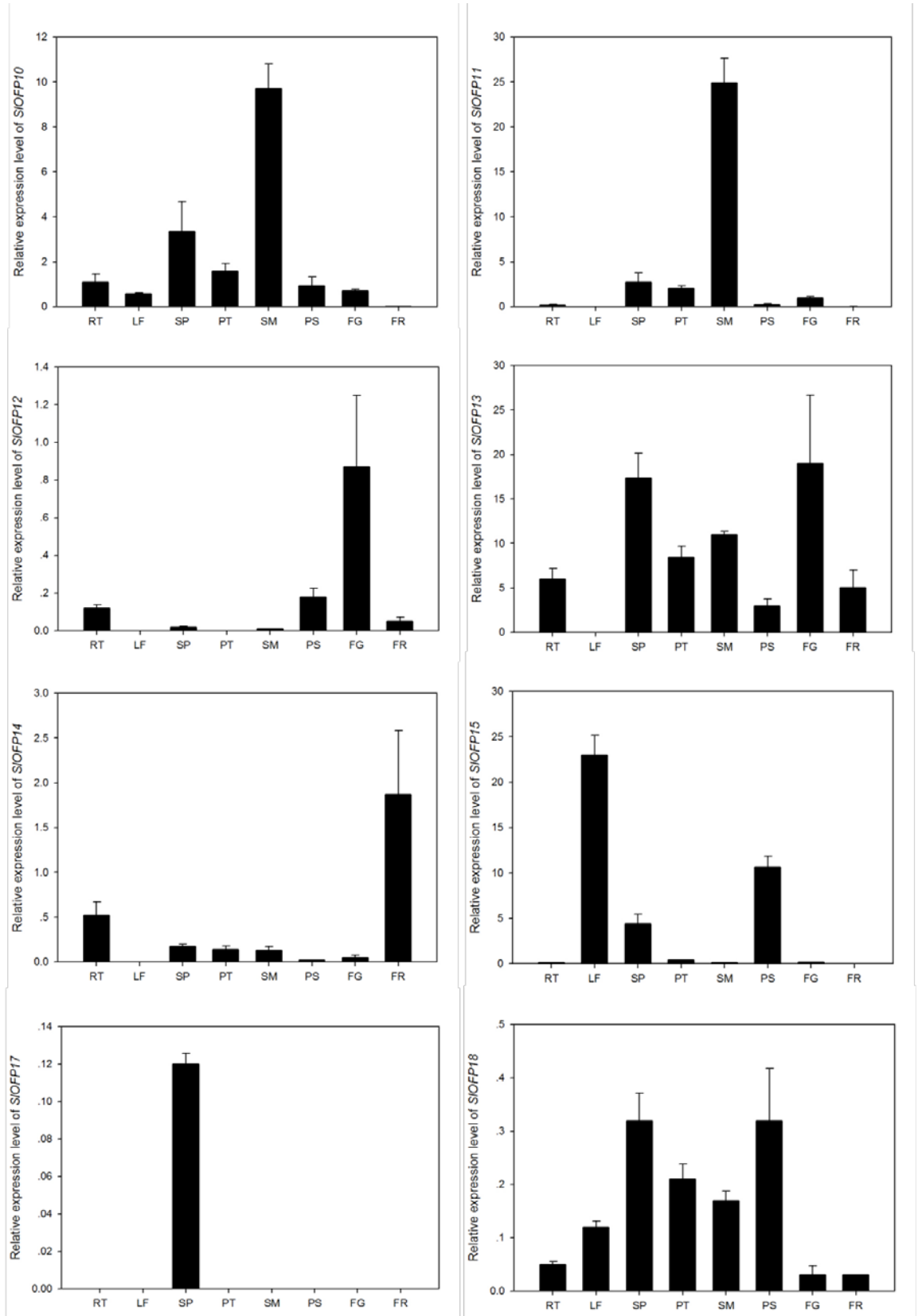
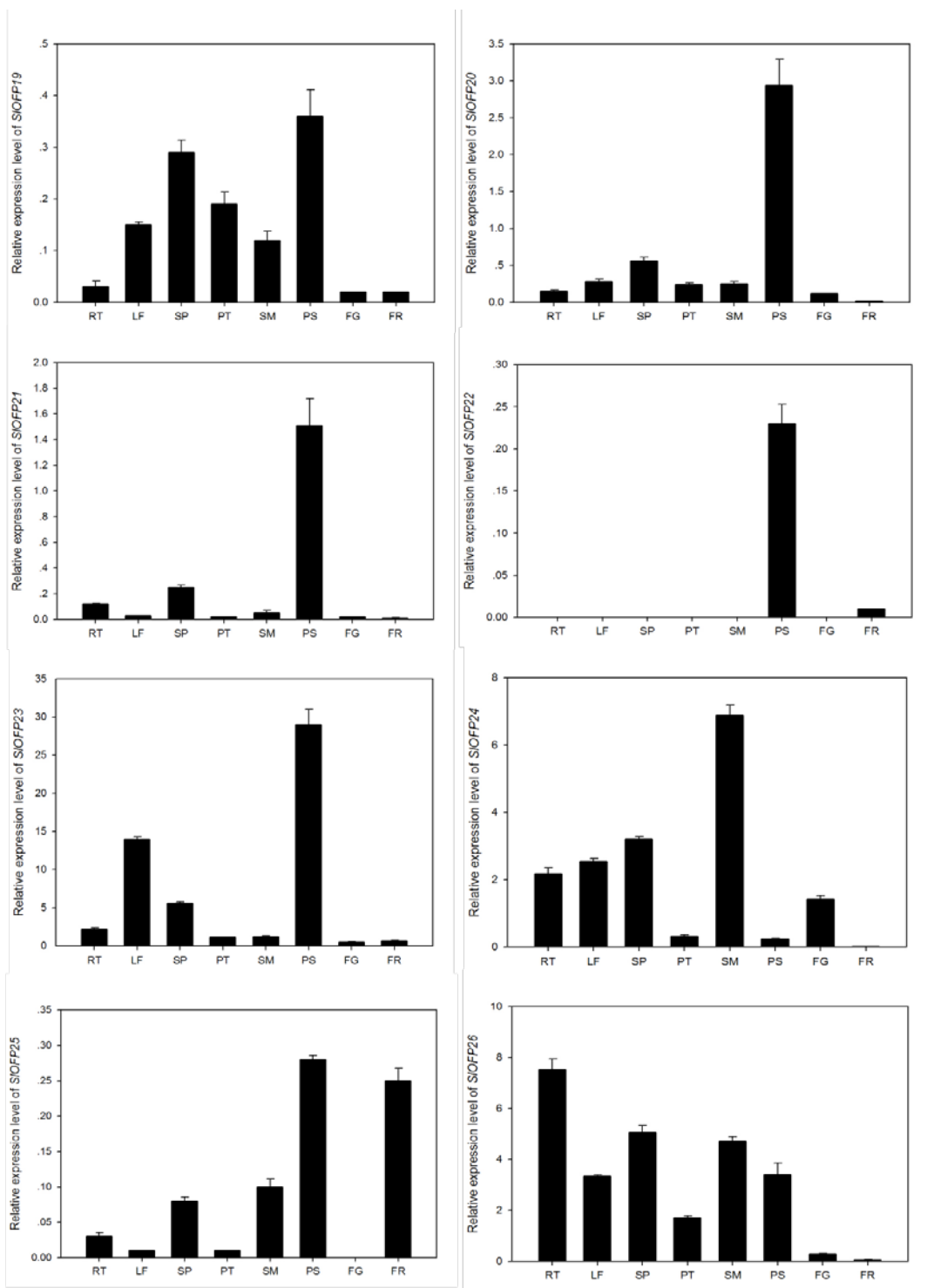
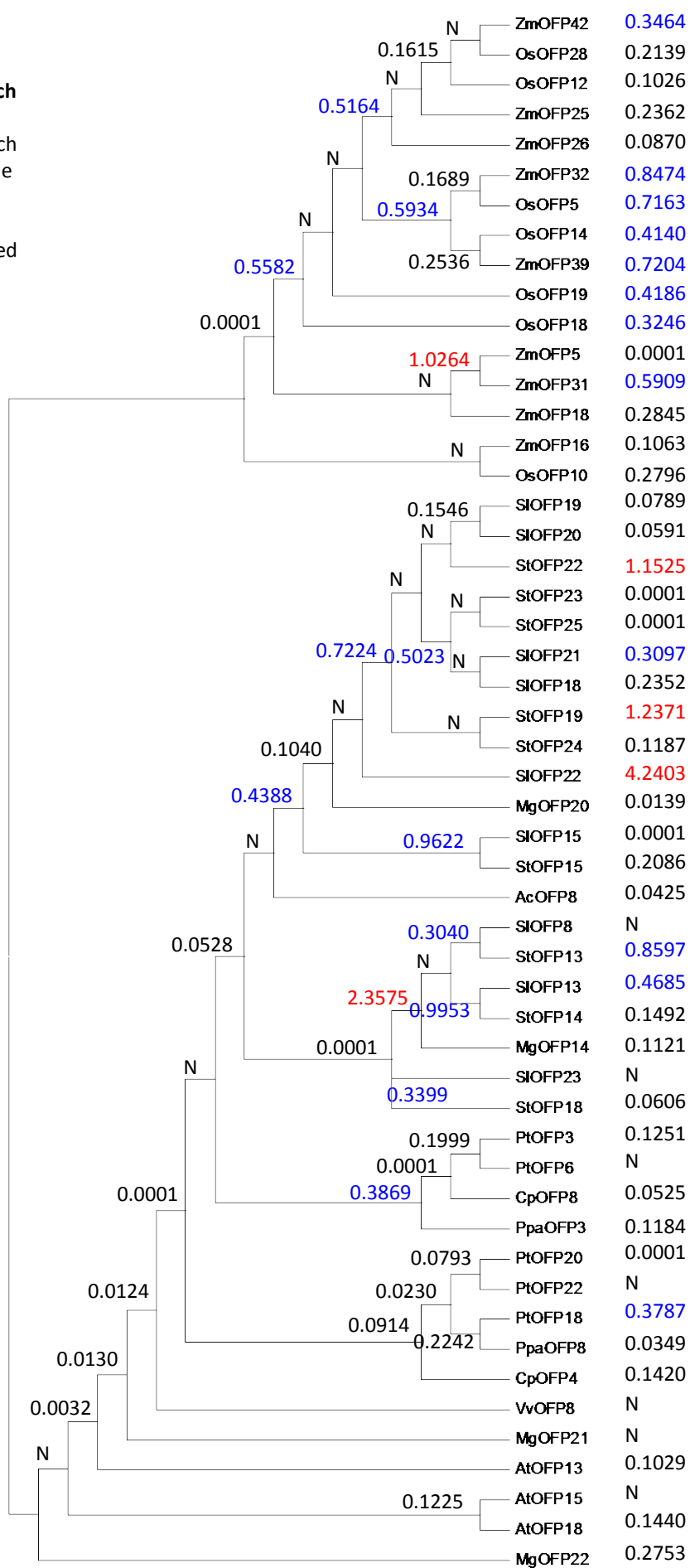


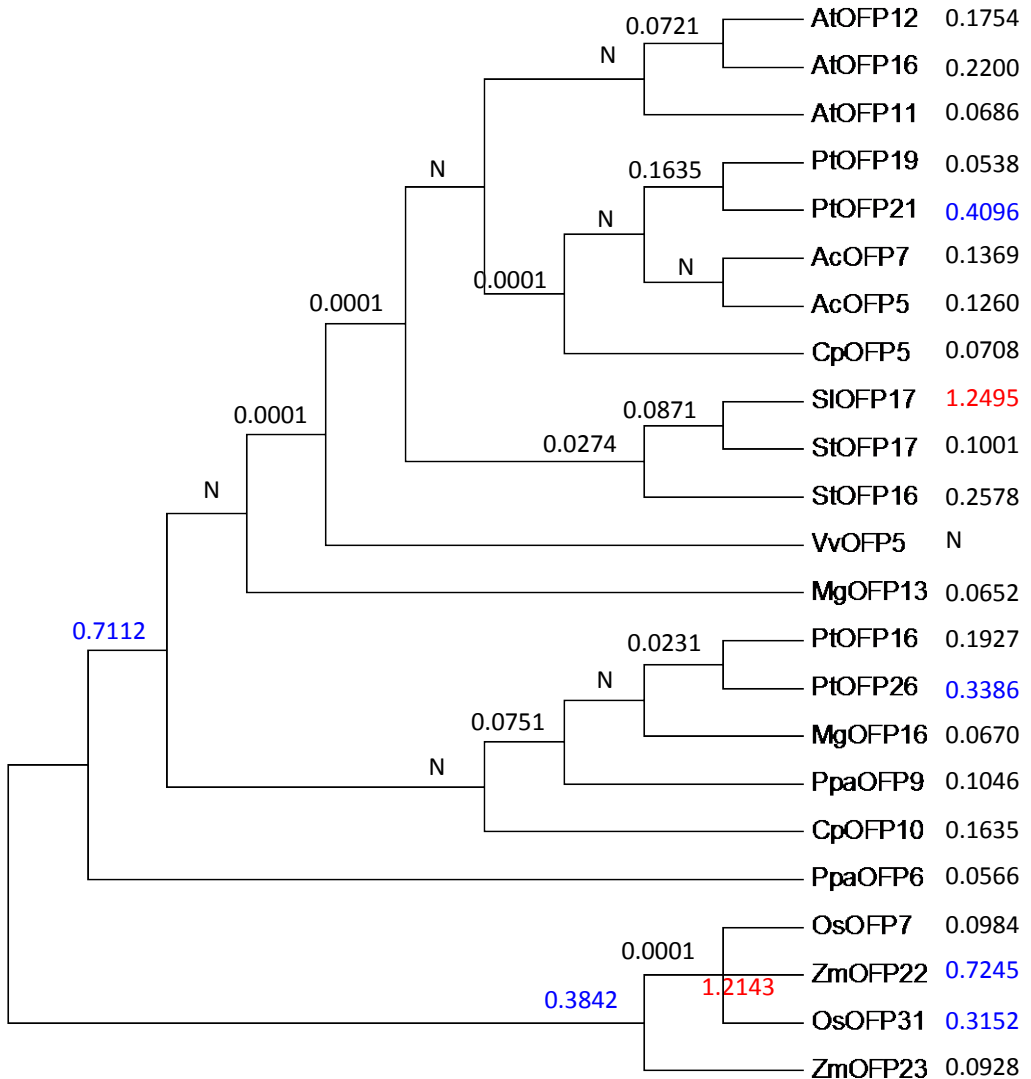
Fig. S2. continued.



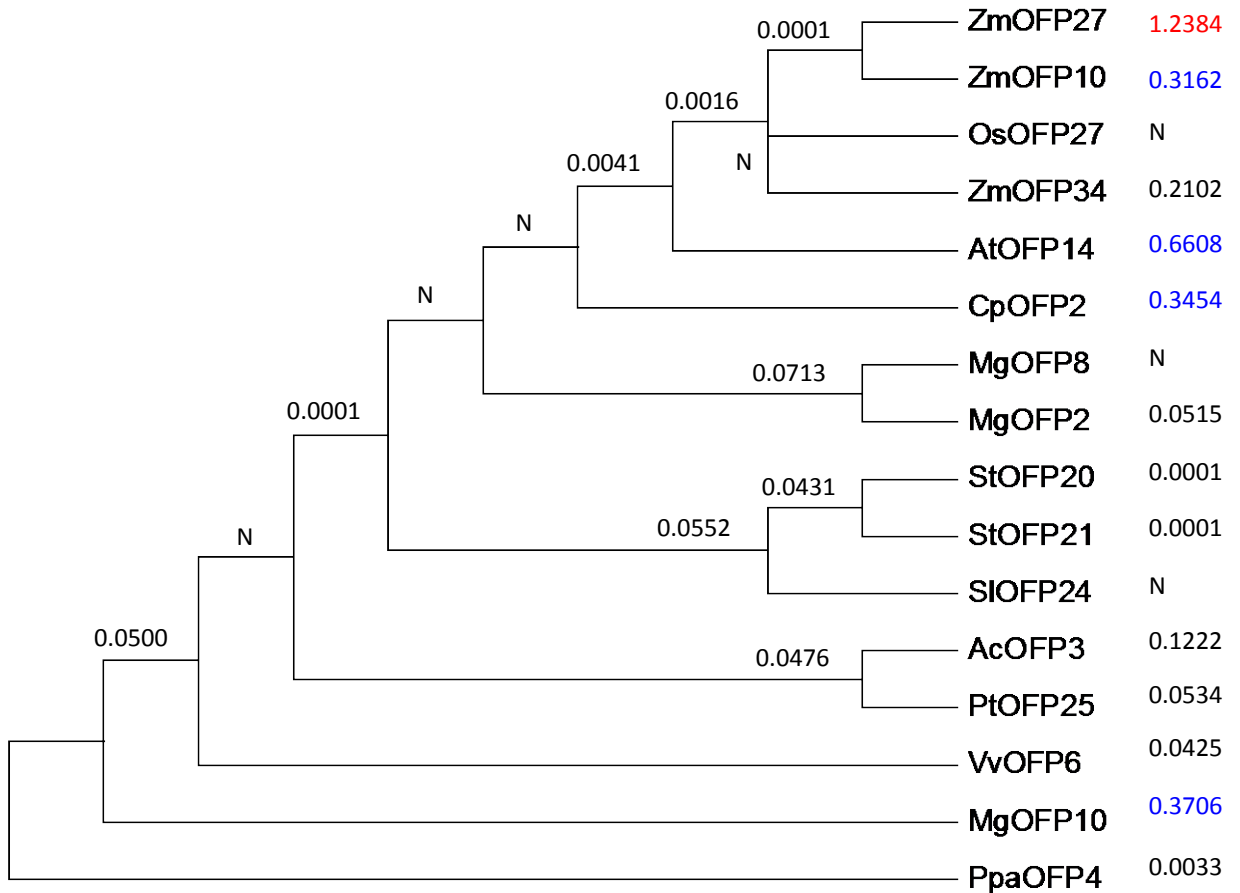
**Figure S3:**  
**dN/dS value of each branch**  
**of subgroup 1.** Numbers  
 associated with each branch  
 are dN/dS values. The value  
 bigger than 1 and the one  
 between 0.3  
 and 1 is highlighted with red  
 and blue,  
 respectively.



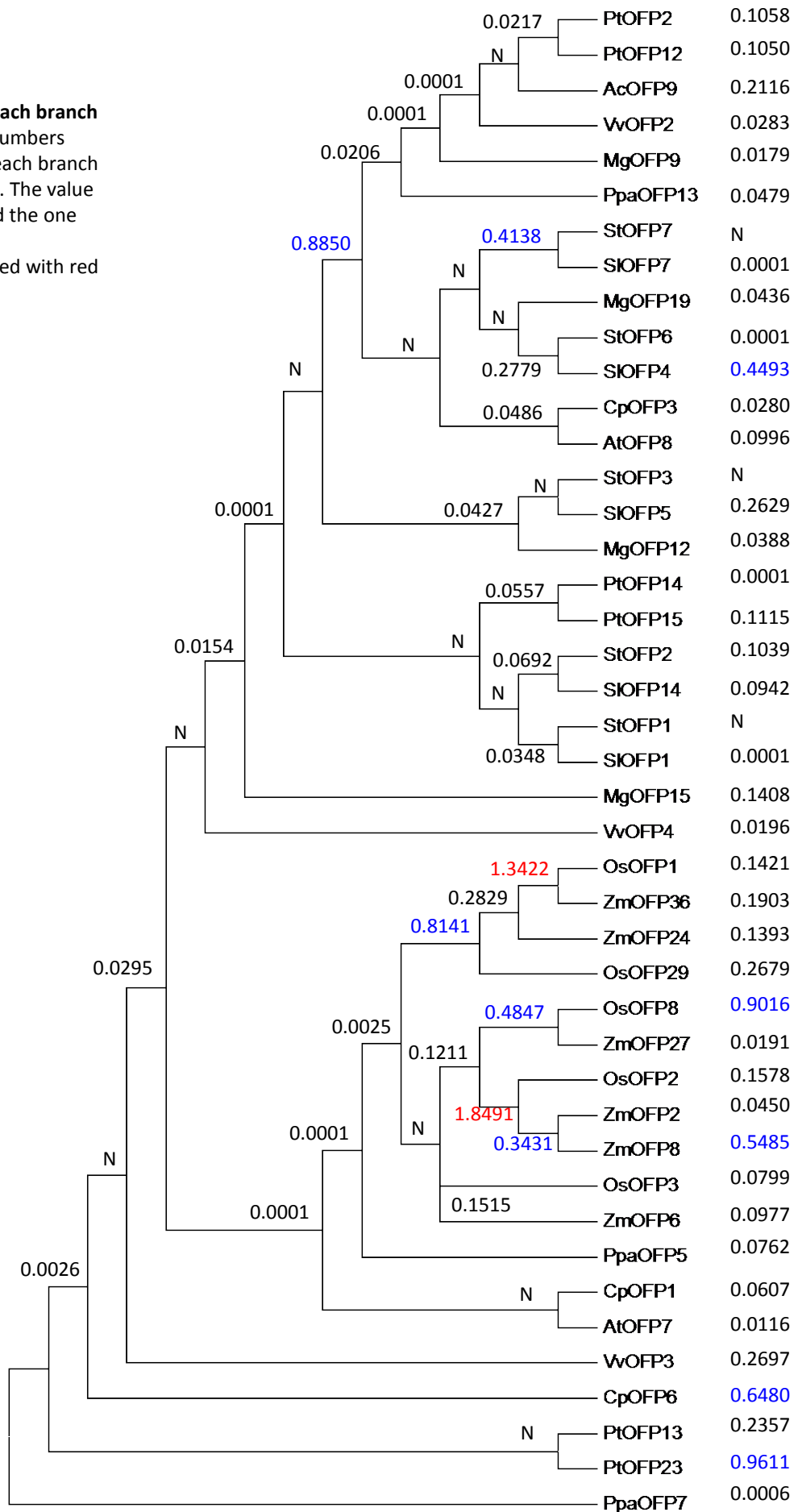
**Figure S4: dN/dS value of each branch of subgroup 2.** Numbers associated with each branch are dN/dS values. The value bigger than 1 and the one between 0.3 and 1 is highlighted with red and blue, respectively.



**Figure S5: dN/dS value of each branch of subgroup 3.** Numbers associated with each branch are dN/dS values. The value bigger than 1 and the one between 0.3 and 1 is highlighted with red and blue, respectively.

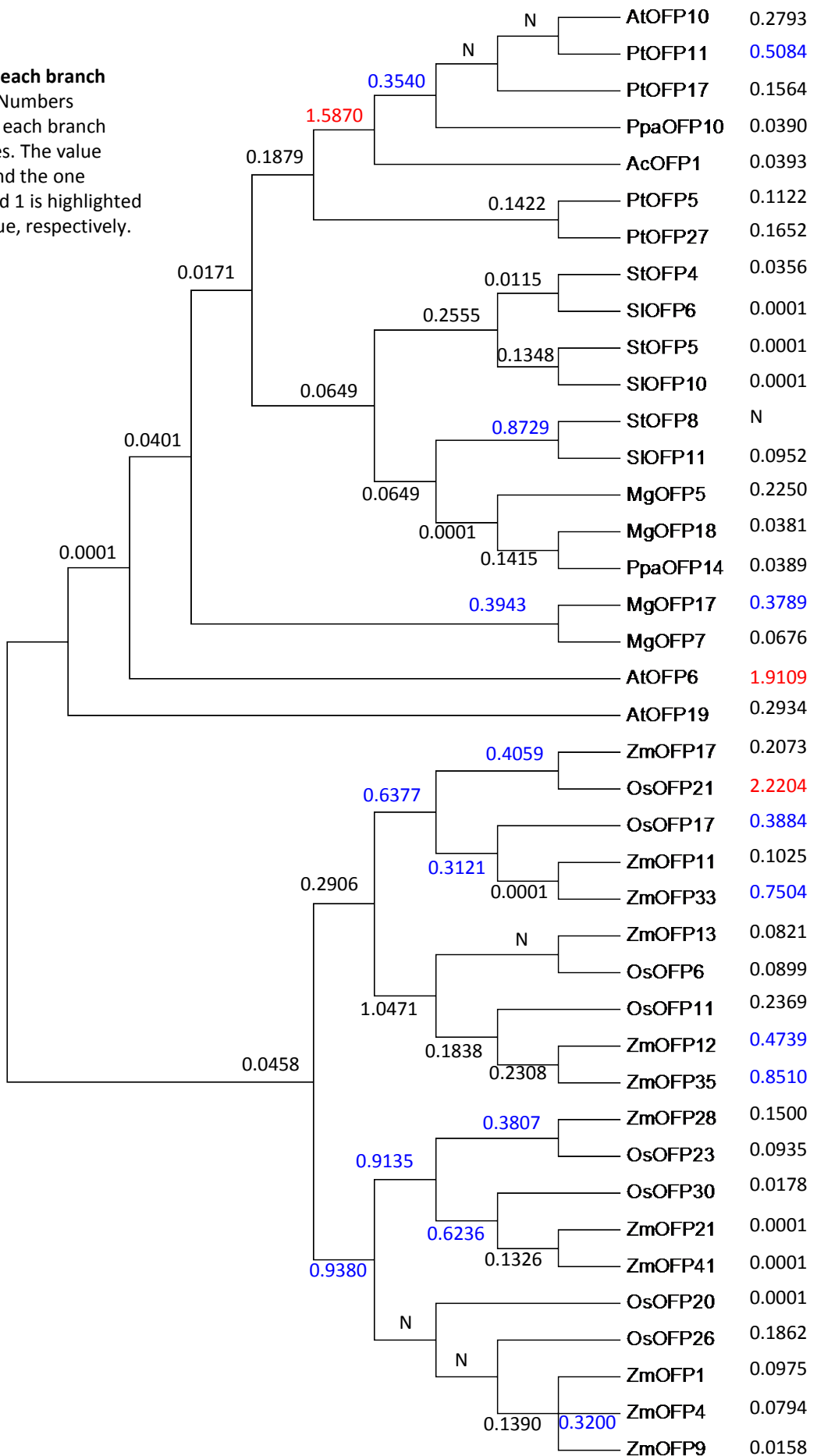


**Figure S6:**  
**dN/dS value of each branch**  
**of subgroup 4.** Numbers  
 associated with each branch  
 are dN/dS values. The value  
 bigger than 1 and the one  
 between 0.3  
 and 1 is highlighted with red  
 and blue,  
 respectively.

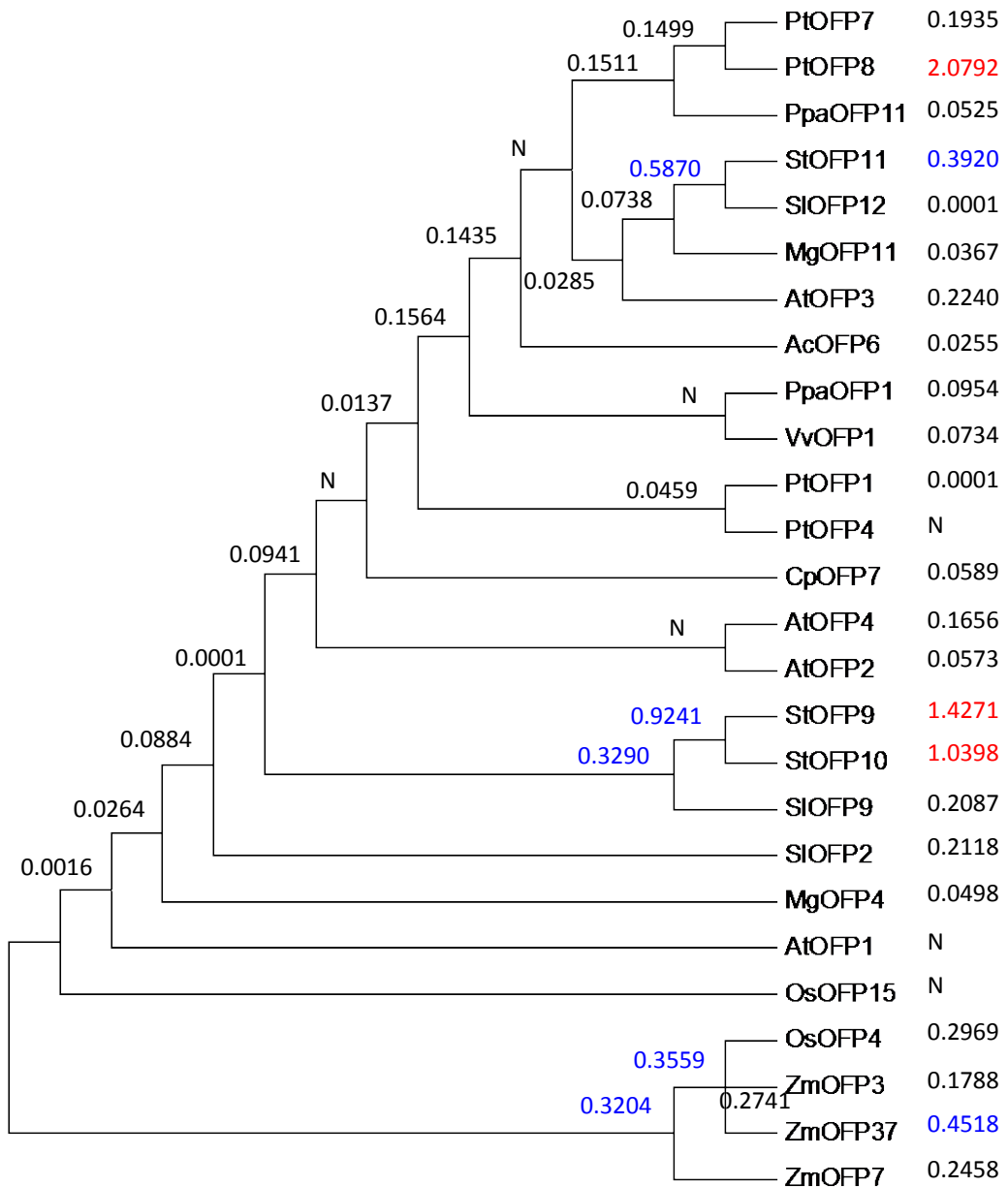




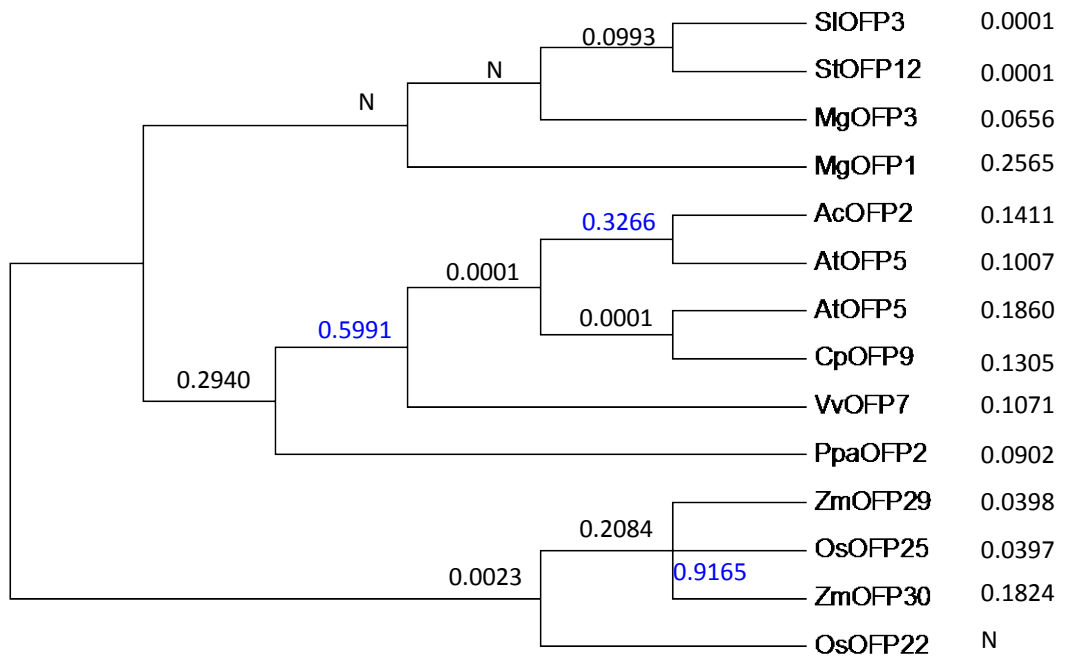
**Figure S7:**  
**dN/dS value of each branch**  
**of subgroup 5.** Numbers  
 associated with each branch  
 are dN/dS values. The value  
 bigger than 1 and the one  
 between 0.3 and 1 is  
 highlighted with red and  
 blue, respectively.



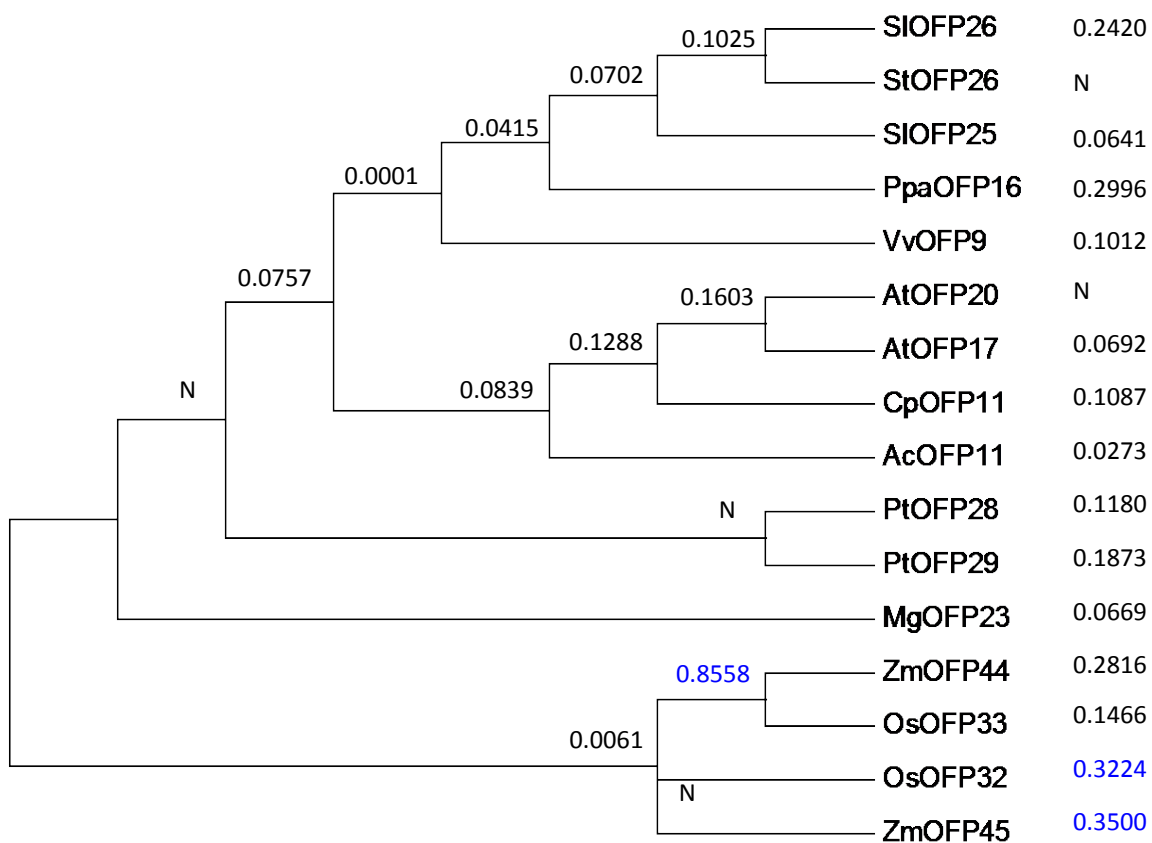
**Figure S8: dN/dS value of each branch of subgroup 6.** Numbers associated with each branch are dN/dS values. The value bigger than 1 and the one between 0.3 and 1 is highlighted with red and blue, respectively.



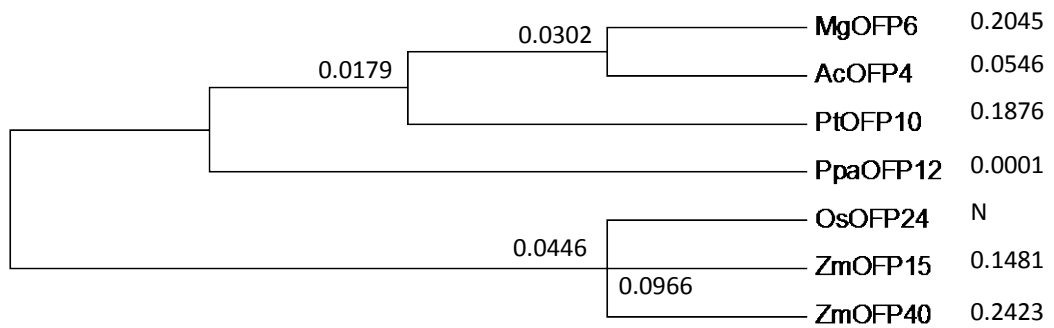
**Figure S9: dN/dS value of each branch of subgroup 7.** Numbers associated with each branch are dN/dS values. The value between 0.3 and 1 is highlighted with blue.



**Figure S10: dN/dS value of each branch of subgroup 8.** Numbers associated with each branch are dN/dS values. The value between 0.3 and 1 is highlighted with blue.



**Figure S11: dN/dS value of each branch of subgroup 9.** Numbers associated with each branch are dN/dS values.



**Figure S12: dN/dS value of each branch of subgroup 10.** Numbers associated with each branch are dN/dS values. The value between 0.3 and 1 is highlighted with blue.

