

Table S1. Primers for *in vitro* NHEJ assay and mouse gene expression

Primers	Forward primer (F)	Reverse primer (R)
Set A (loading control)	F: 5'-GGTGATGACGGTGAAAACCT-3'	R: 5'-GCTCTGATGCCGCATAGTTA-3'
Set B (joining junction)	F: 5'-GGAGAAAATACCGCATCAGG-3'	R: 5'-GAGTCAGTGAGCGAGGAAGC-3'

Figure S1

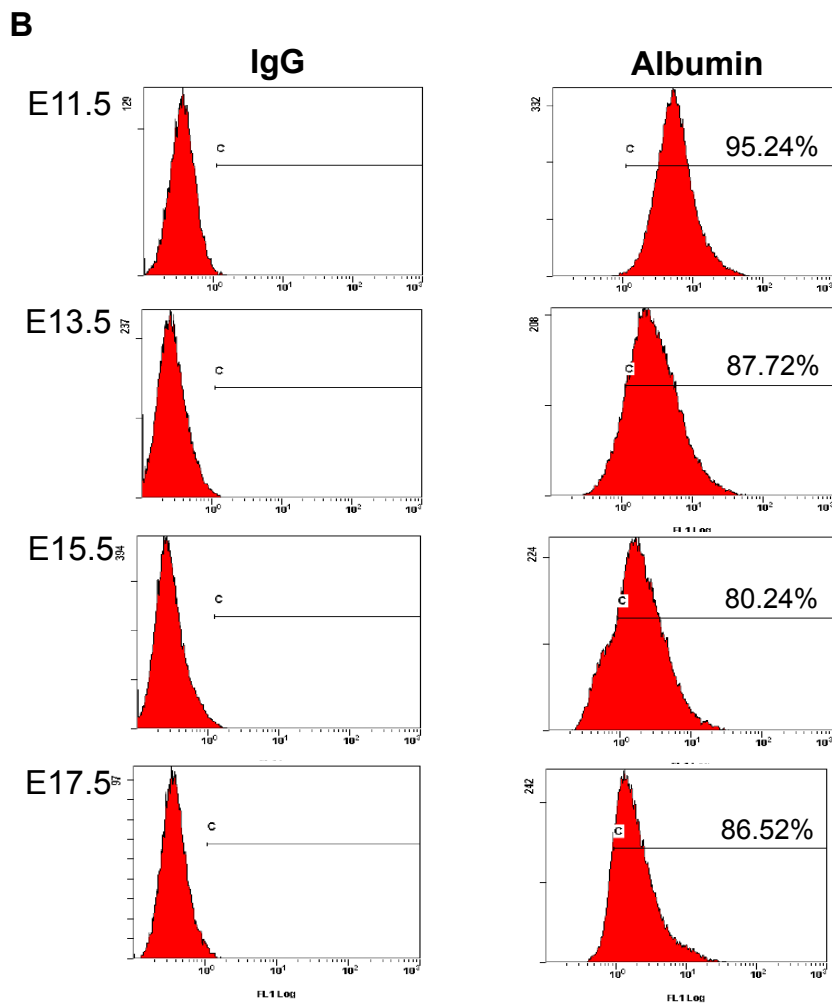
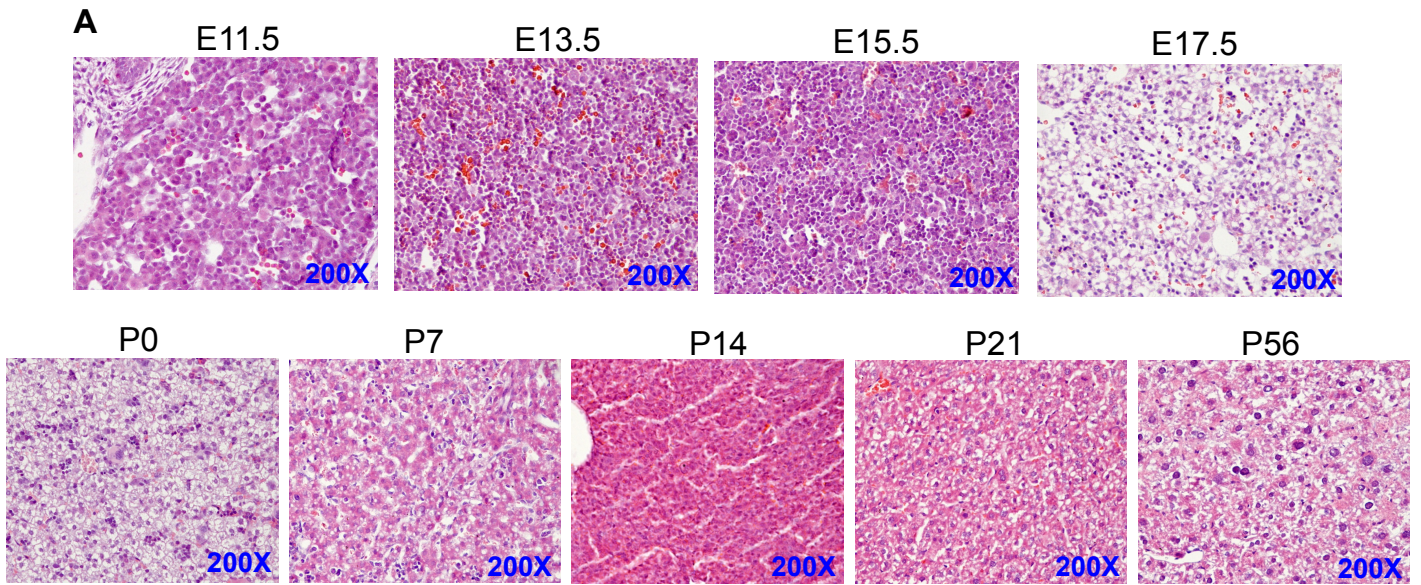
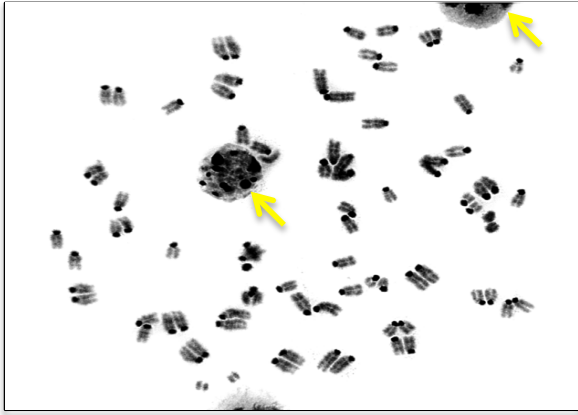


Figure S2

A



B

