

Supplemental data

Table of Content

Supplemental data Figures

Supplemental data Figure I Representative Palmitoyl-CoA dilution series

Supplemental data Figure II Representative Palmitoyl-CoA measurement in mouse livers

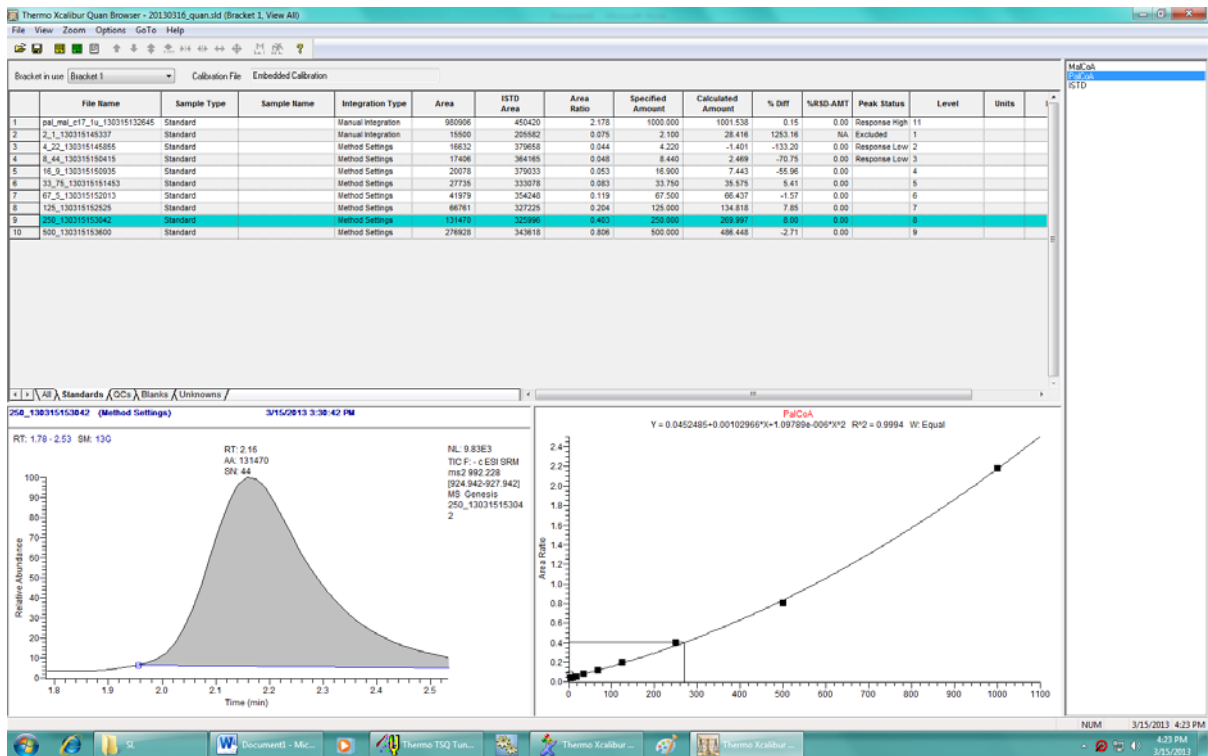
Supplemental data Tables

Supplemental data Table I Patients

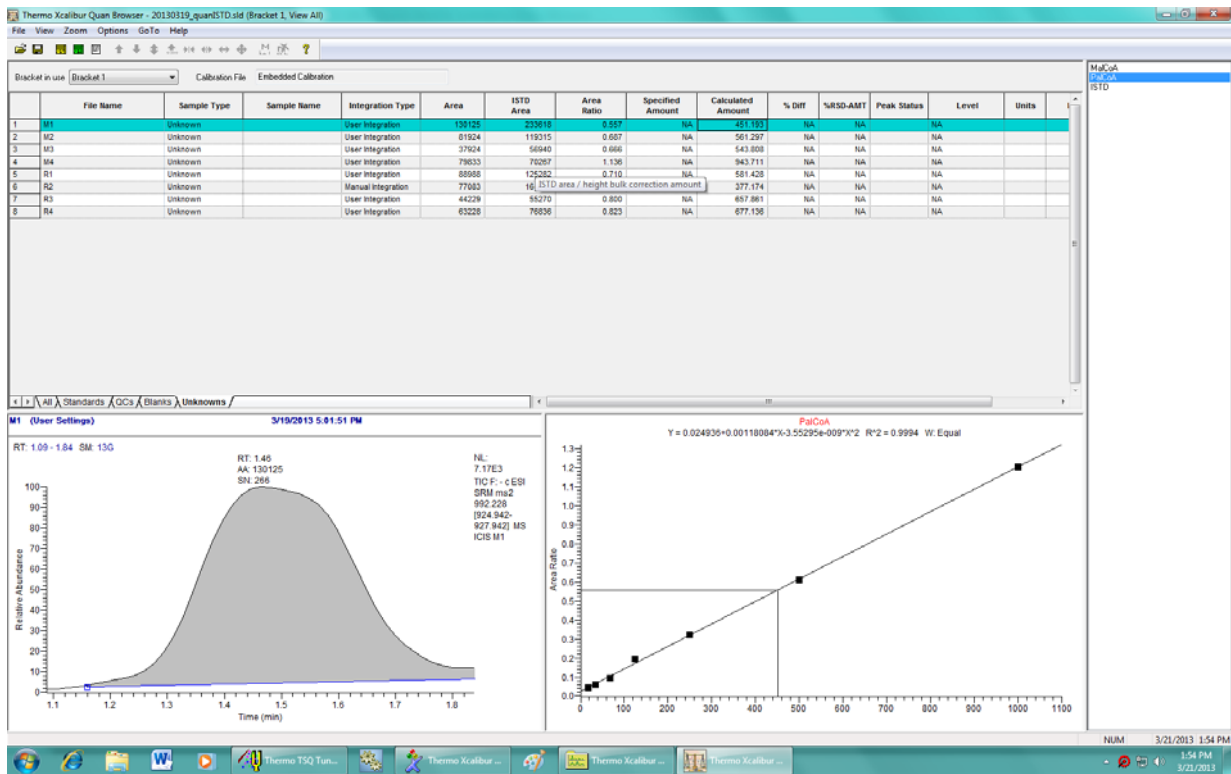
Supplemental data Table II Primer and conditions

Supplemental data Table III Antibodies and conditions

Supplemental data Figures



Supplemental data Figure I: Representative Palmitoyl-CoA dilution series



Supplemental data Figure II: Representative palmitoyl-CoA measurement in mouse livers

Supplemental data Tables

Nr.	diagnosis
1	cirrhosis, hepatitis
2	cirrhosis, hepatitis
3	liver cirrhosis,primary biliary cirrhosis
4	cirrhosis
5	cirrhosis, hepatitis
6	cirrhosis, hepatitis
7	liver cirrhosis,hepatitis C virus
8	liver cirrhosis,hepatitis C virus
9	liver cirrhosis,hepatitis B virus
10	liver cirrhosis, alcoholic liver
11	liver cirrhosis,hepatitis B virus
12	cirrhosis,viral hepatitis
13	liver cirrhosis, alcoholic hepatitis
14	liver cirrhosis,hepatitis C virus
15	liver cirrhosis,Budd-chiary-S.
16	liver cirrhosis,hepatitis C virus
17	liver fibrosis,liver cirrhosis
18	liver cirrhosis,liver cirrhosis alcoholic
19	liver cirrhosis
20	liver cirrhosis,viral hepatitis
21	liver cirrhosis,hepatitis C virus
22	liver cirrhosis
23	liver cirrhosis,hepatitis B virus
24	liver cirrhosis
25	cirrhosis,hepatitis C virus
26	liver cirrhosis,hepatitis B virus
27	liver cirrhosis, cryptogen.,viral hepatitis
28	liver cirrhosis,viral hepatitis
29	liver cirrhosis,viral hepatitis
30	liver cirrhosis
31	liver cirrhosis,alcoholic liver cirrhosis
32	liver cirrhosis
33	liver cirrhosis,hepatitis B virus,hepatitis C virus
34	liver cirrhosis,hemachromatome
35	liver cirrhosis, alpha-1 antitrypsin deficiency

Supplemental data Table I: Patients / Diagnosis

gene	forward primer sequence 5'-3'	reverse primer sequence 5'-3'	amplicon size [bp]	gene bank accession number	primer amount [μ l/reaction [10 mM]]	annealing temp. [°C]
huACTB	TGCGTGACATTAAGGAGAAG	GTCAGGCAGCTCGTAGCTCT	107	NM_001101	0.4	60
huACACA	TCCGACCAGTAATCACTTTGC	GGGAACGTTATCCCCAAACC	139	NM_198834.1	0.5	60
huELOVL6	CACTGTGAGCTGAAAAGGGAG	GTGTGAAGTCAAACAGGGAGGG	104	NM_024090.2	0.4	60
huFASN	ACTTCCCCAACGGTTCAGGTTC	GCGTCTTCCACACTATGCTCAG	150	NM_004104.4	0.4	62
huGCK	CCTTACGCTCCAAGGCTACA	TCTCTCCGAGGGGCTAAGAG	93	NM_033508.1	0.4	60
huIGF2	GGACTTGAGTCCCTGAACCA	TGAAAATTCCCGTGAGAAGG	100	NM_000612	0.5	56
huMLXIPL	CCCAAGTGAAGAATTTCAAAG	CTCTTCCTCCGCTTCACATACT	110	NM_032952.2	0.4	59
huNR1H3	TCATCAACCCCATCTTCGAG	GCAATGAGCAAGGCAAACCTC	79	NM_005693	0.2	60
hup62	GTTCCCGCATCATCACTTTAT	GAATCTCGCCAGCTGTTTGA	117	AF057352	0.4	62
huPKLR	CCCACACTGAAAGCATGTCTG	CTCCTGGAGCCCCAATCAG	114	NM_000298.5	0.4	60
huPPARA	TGCGTAGAAGAGCCAGAAA	GTTGACTGGACGGAGCTGAG	137	NM_001001928.2	0.2	60
huSCD	GCCAATTCCTCTCCACTGCTG	AAGTTCGCTCTTAGAAGCTGCC	80	NM_005063.4	0.4	60
huSREBF1	CCATGGATTGCACTTTTCGAA	GGCCAGGGAAGTCACTGTCTT	66	NM_001005291.2	0.4	60
mu18s	GTAACCCGTTGAACCCATT	CCATCCAATCGGTAGTAGCG	151	NR_003278.1	0.4	58
muMLXIPL	CTGGGGACCTAACAGGAGC	GAAGCCACCCTATAGCTCCC	166	NM_021455.4	0.5	60
muF4/80	CTTTGGCTATGGGCTTCCAGTC	GCAAGGAGGACAGAGTTTATCGT G	165	NM_010130	0.3	60
muPPARA	CCTTCCTGTGAACTGACG	CCACAGAGCGCTAAGCTGT	77	NM_001113418.1	0.5	60

Supplemental data Table II: Primer and conditions

primary antibodies (anti-human/mouse)	dilution buffer	temp.	Time	manufacturer
anti-p62, rabbit IgG	1:1,000 in PBST + 5% BSA	RT	2 h	selfmade; Zhang et al. 1999
anti-alpha-tubulin, mouse IgG	1:1,000 in PBST + 5% dry milk	RT	2 h	Sigma Aldrich
anti-SREBF1, mouse IgG	1:200 in RBB	RT	2 h	Abcam
anti-PPARA; rabbit IgG	1:1,000 in PBST + 5% dry milk	4°C	overnight	Abcam
anti-ELOVL6, rabbit IgG	1:1,000 in PBST + 5% BSA	4°C	overnight	Sigma Aldrich
anti-FASN, rabbit IgG	1:1,000 in RBB	RT	2 h	Cell Signaling Technology
anti-lamin A/C, rabbit IgG	1:1,000 in RBB	4°C	overnight	Cell Signaling Technology

Supplemental data Table III: Antibodies and conditions