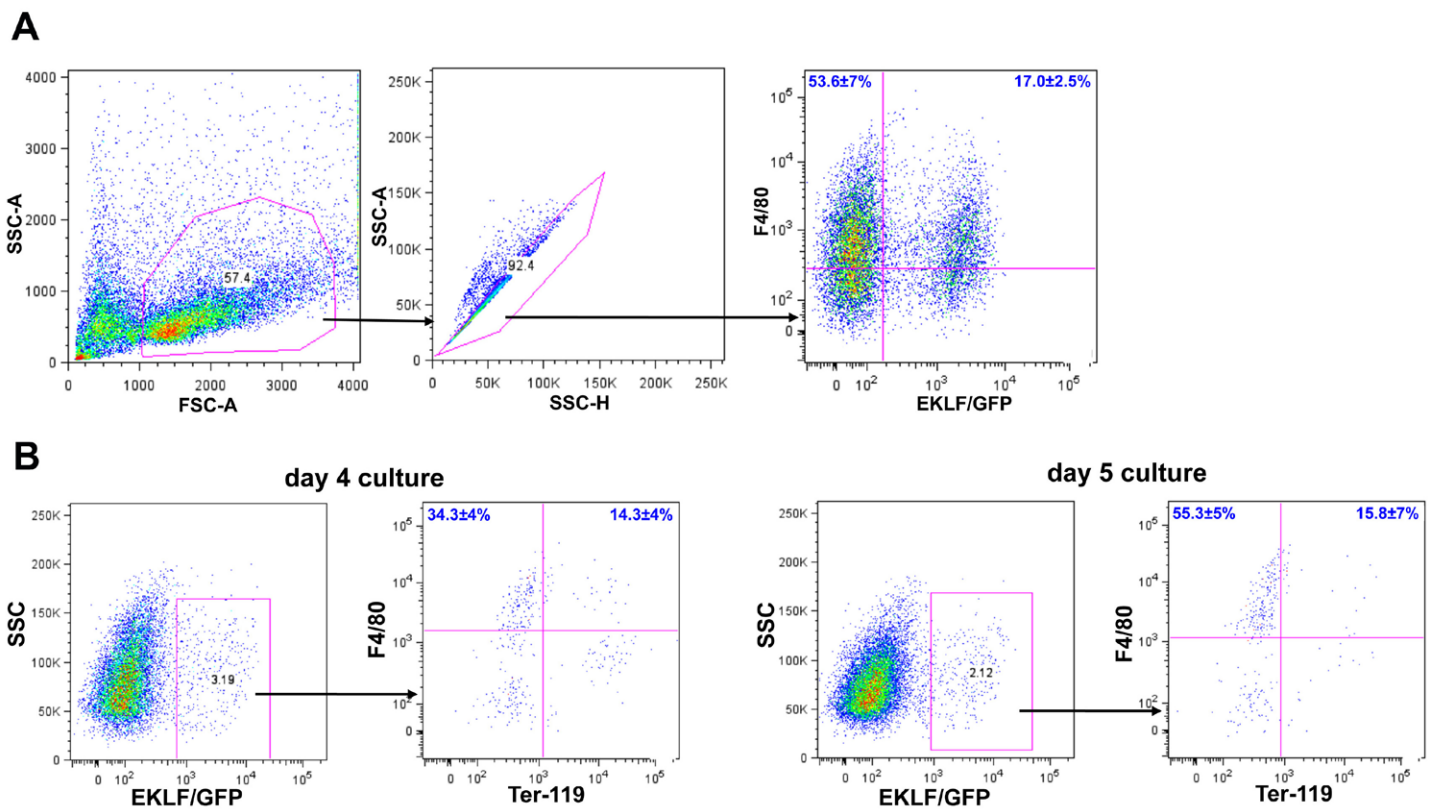
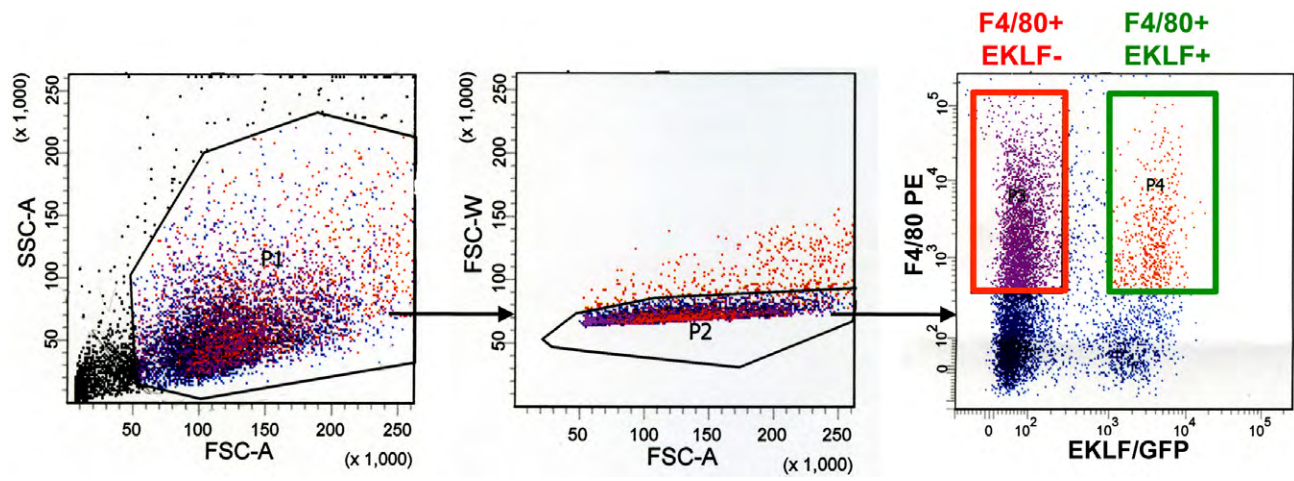


**Supplementary Fig. S1. Primitive erythroid colonies in semi-solid media.** Photos of typical colonies seen in absence or with inclusion of FMV peptide in methylcellulose as indicated (corresponds to experiment in Fig. 3).



**Supplementary Fig. S2. Analysis of EKLF/GFP and F4/80 populations in E13.5 fetal liver cells.** (A) Cells were gated for singlets prior to analysis of EKLF/GFP and F4/80 expression. (B) Cells were cultured for 4 or 5 days without erythropoietin prior to analysis of EKLF/GFP, F4/80, and Ter119 expression.



**Supplementary Fig. S3. Gatings used for isolation of EKLf/GFP+ or EKLf/GFP- cells isolated for RNA preparations (analysis of Fig. 5C).**

**Table S1. q-PCR primers used in this study (mouse forward and reverse, respectively)**

mVcam1

GTCTACTCATTCCCTGAAGATCC  
GACTTTATGCCCATTTCTCC

mMaf

ACTAAAGCCACTCCTGAACC  
GACAAAGTAGCAAGCATCGT

mPald

ATGCTGTCATCCAAGACCTG  
AGACTTTGTA CTCTGATTGGCT

mltgav

GATGAAGGCTGGA ACTCAACTG  
GGACTTGAAACTCCTCTTATCTCC

mMaea

TCAAGAGGAAGGCAGTAGAG  
GTCAGGAACATCTCGATATTCAC

mDnase2a

GCAGCCATTGTACCGAAAG  
AGGTTTGAGCATTAGGAGG

mEKLF

GGACACCCAGGAGGACTTC  
GGTCCTCCGATTT CAGACTCAC