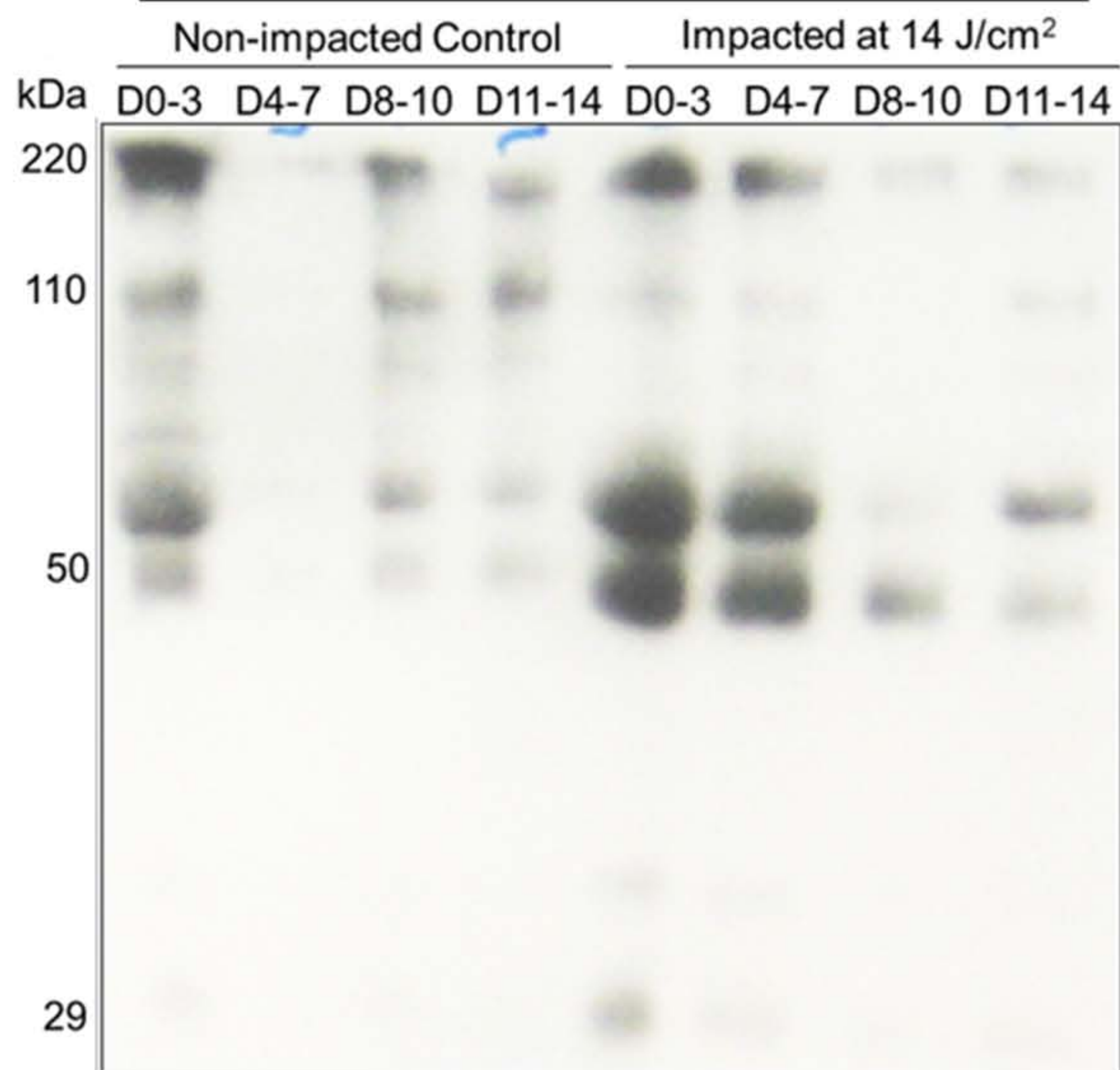
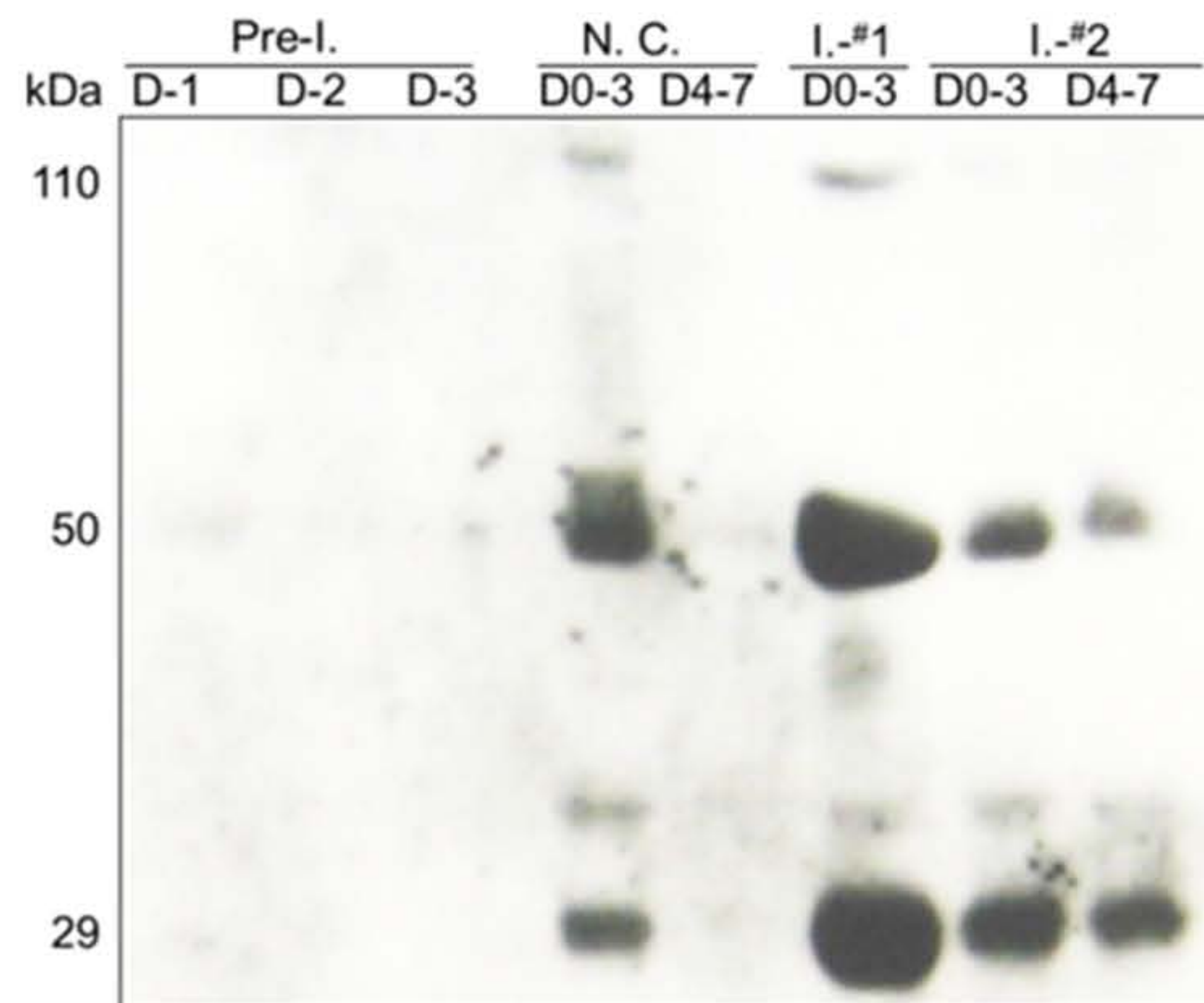


Supplementary Figure 1

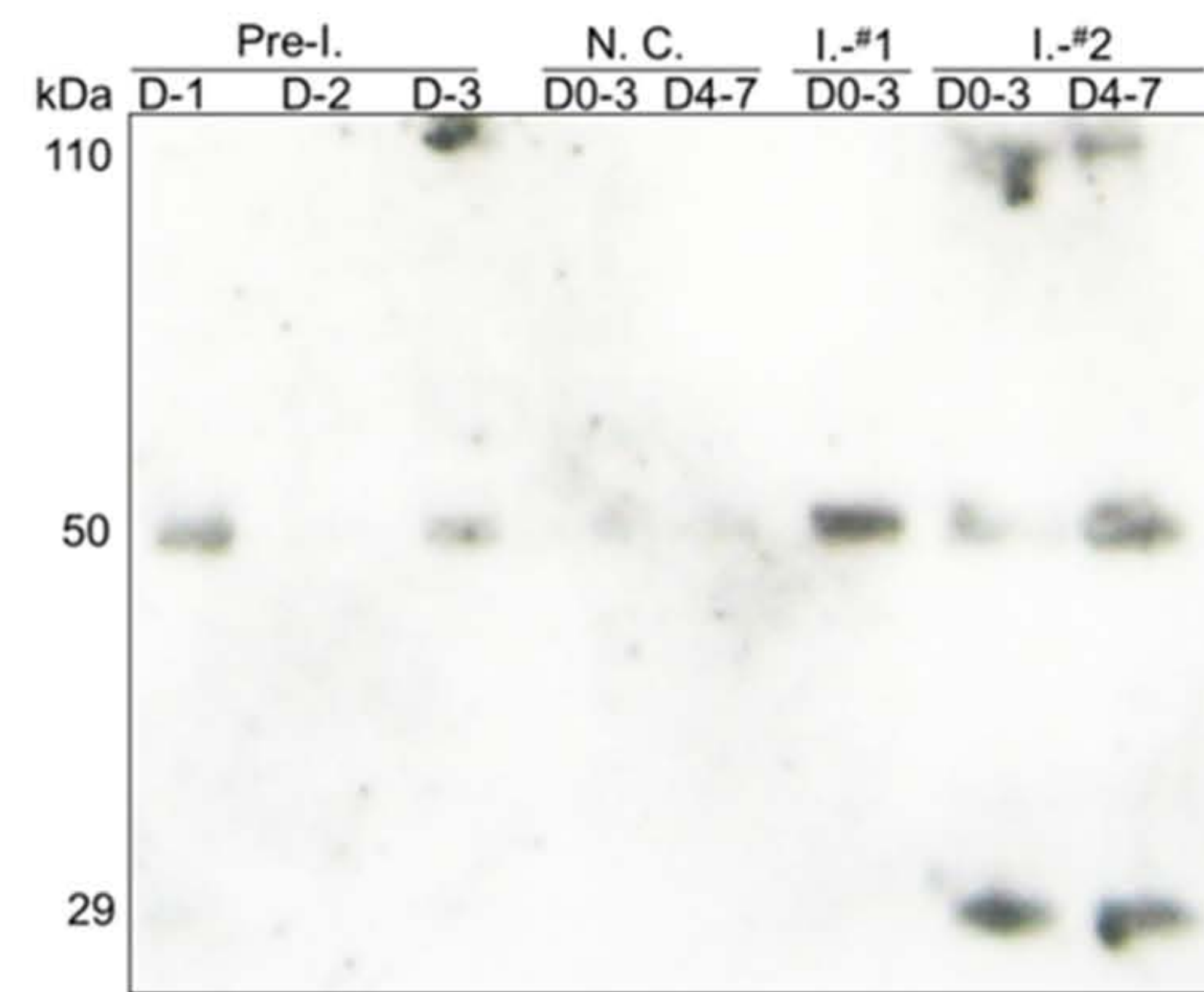
Anti-Fn (Whole Molecule) (Ex.#2)



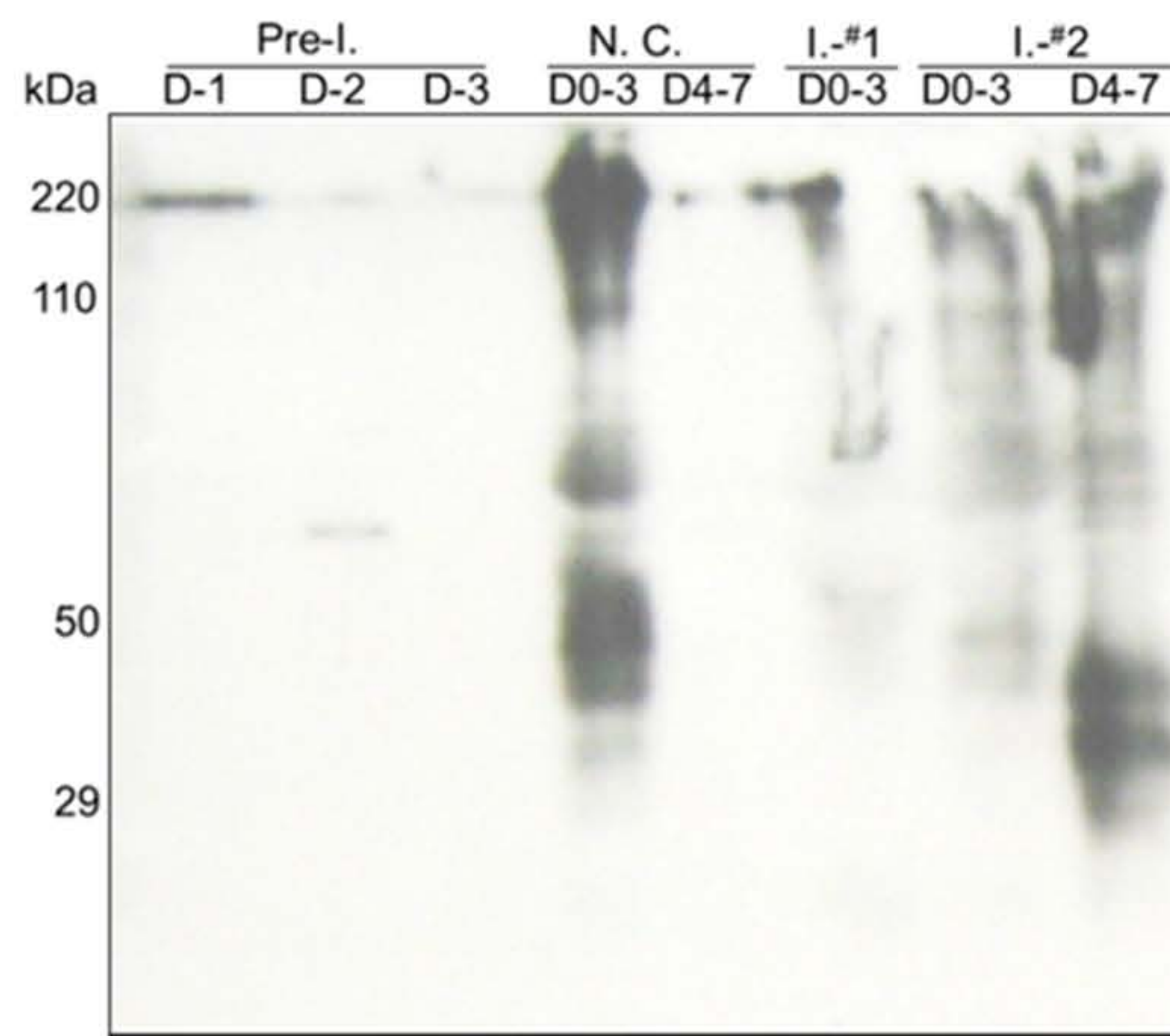
Anti-Fn (N-terminus) (Ex.#2)



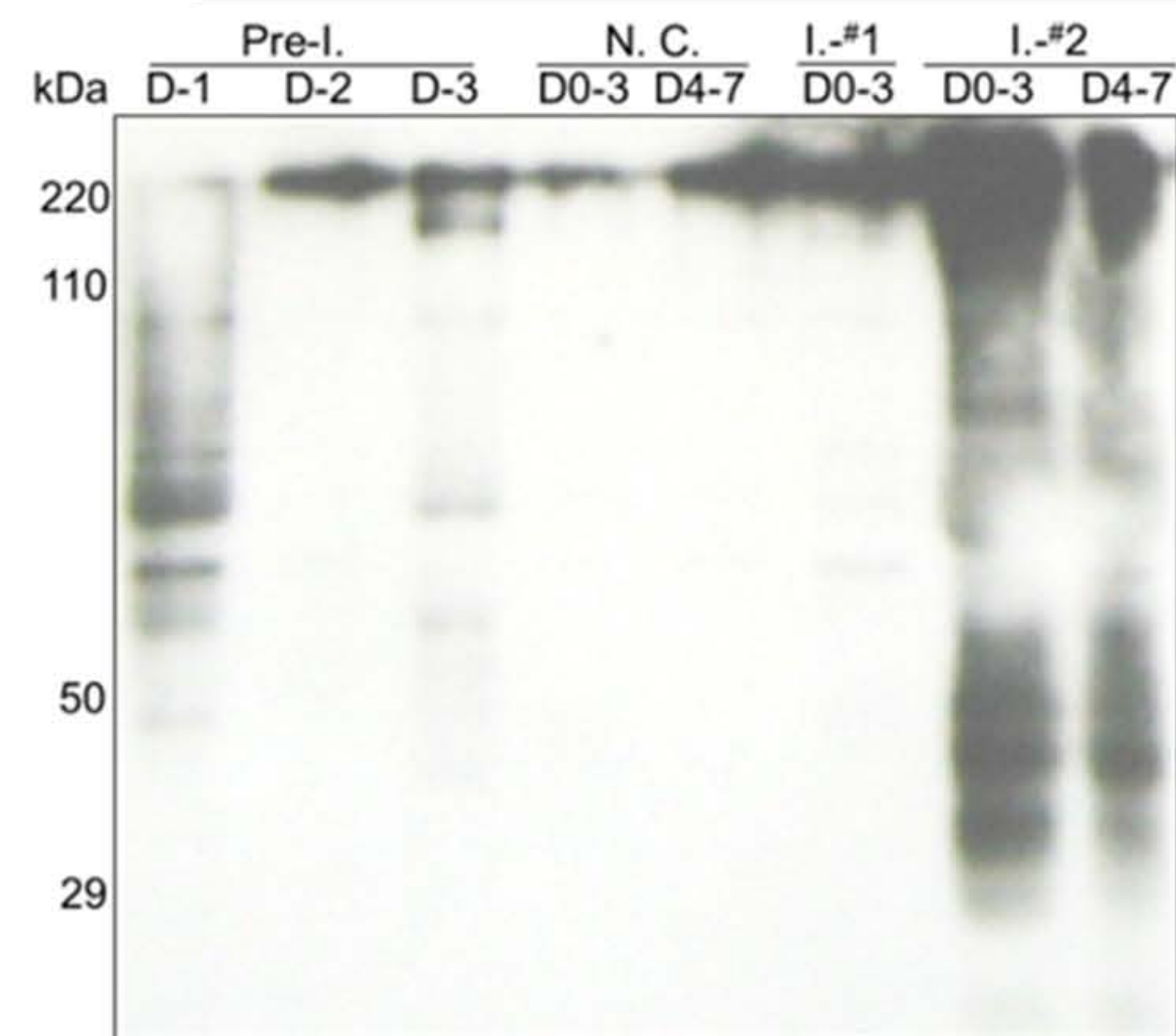
Anti-Fn (N-terminus) (Ex.#3)



Anti-Fn (C-terminus) (Ex.#2)

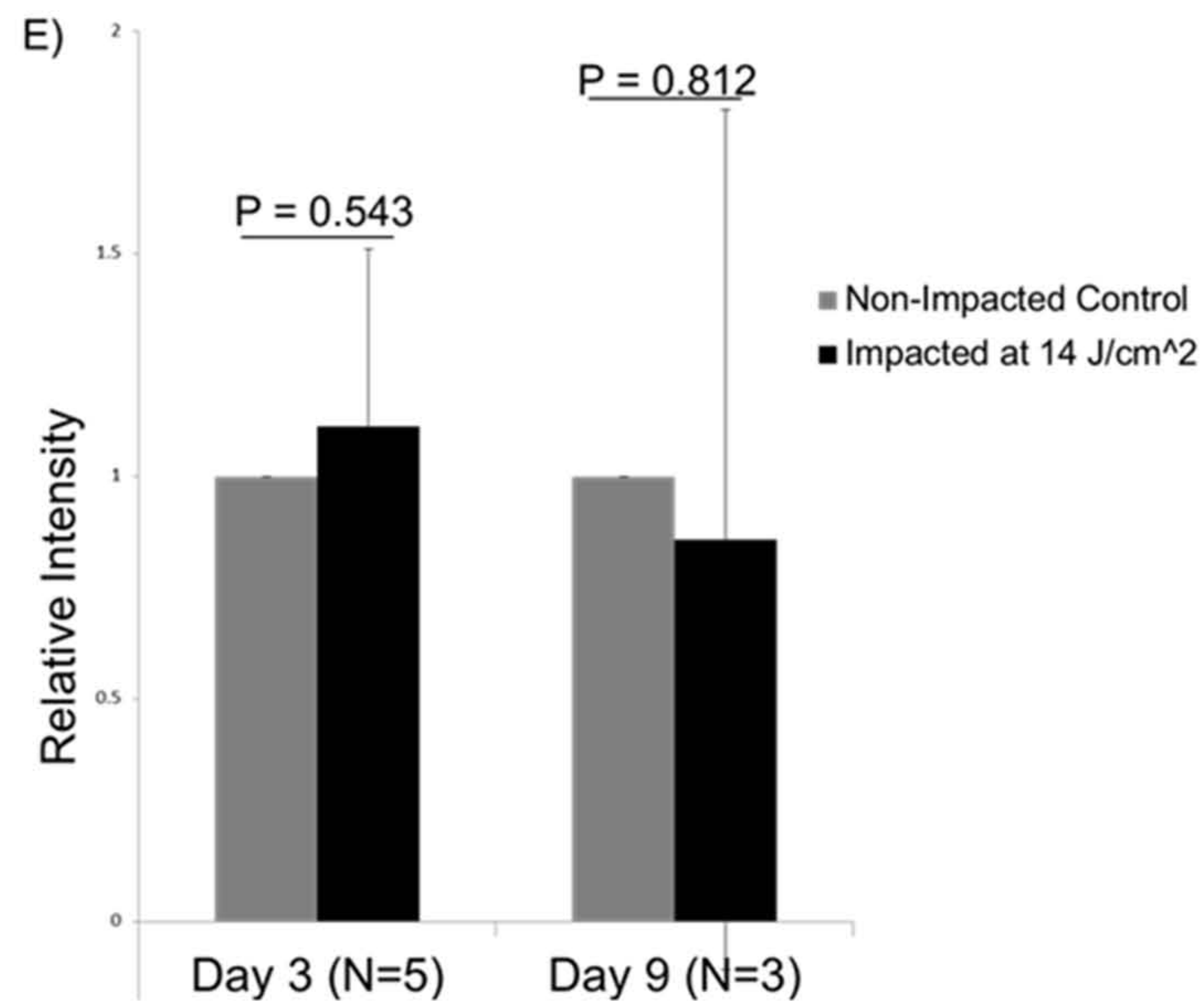
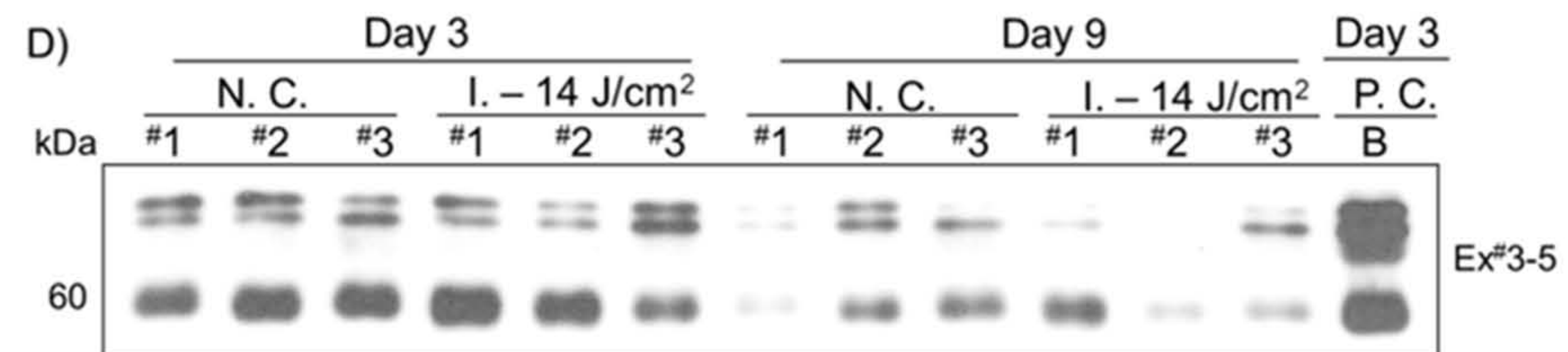
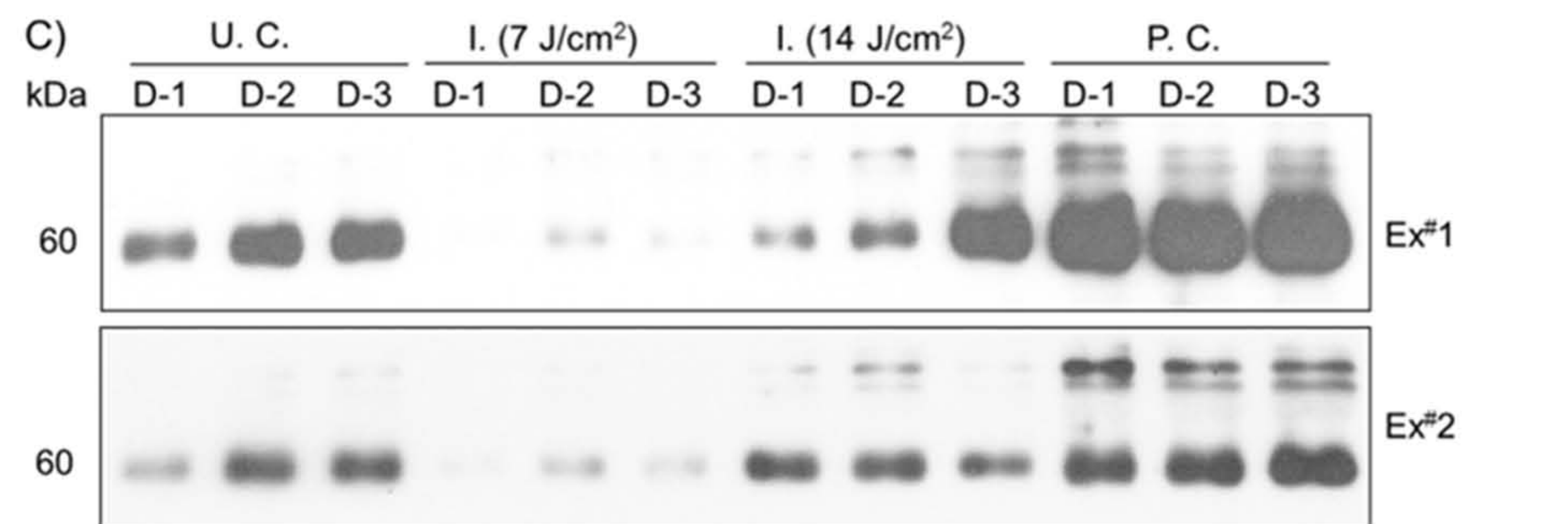
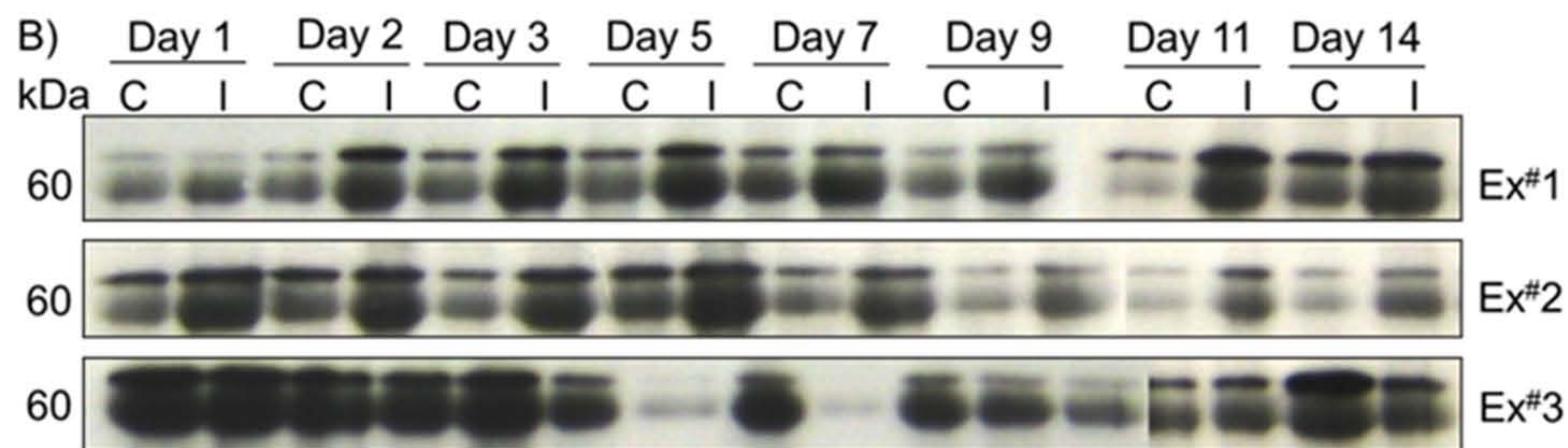
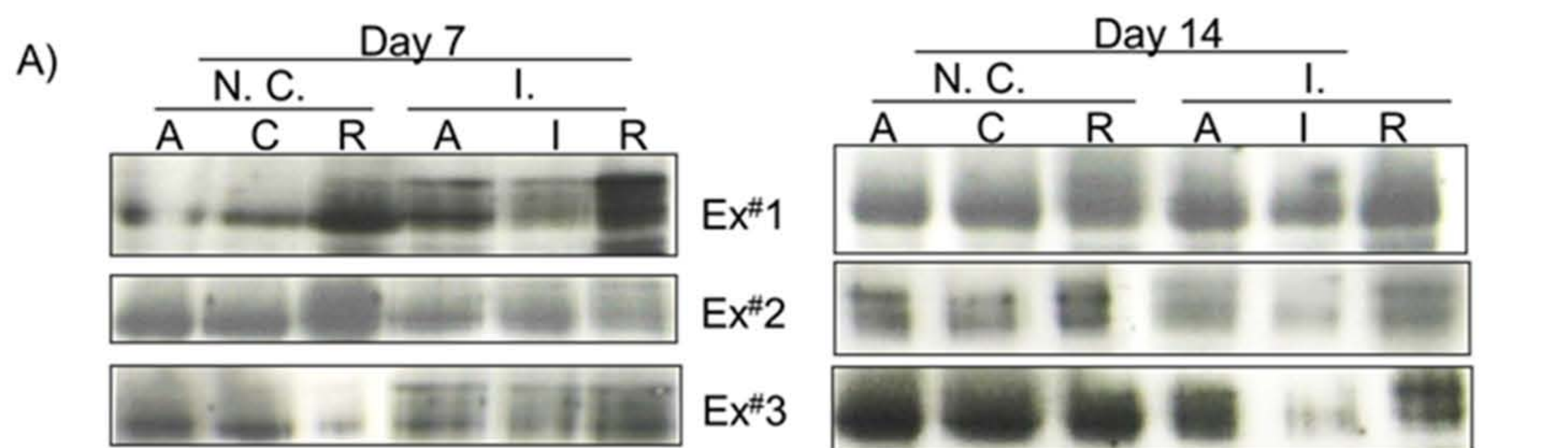


Anti-Fn (C-terminus) (Ex.#3)



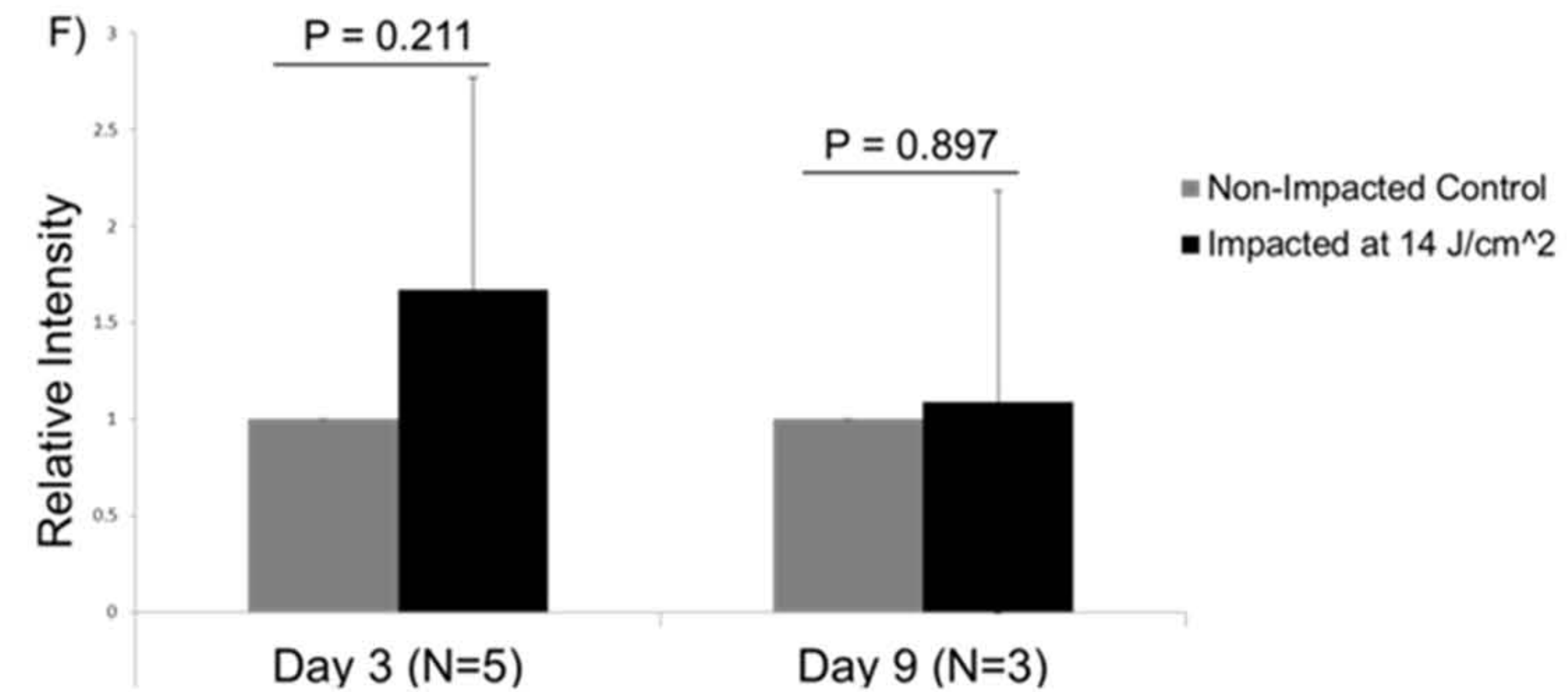
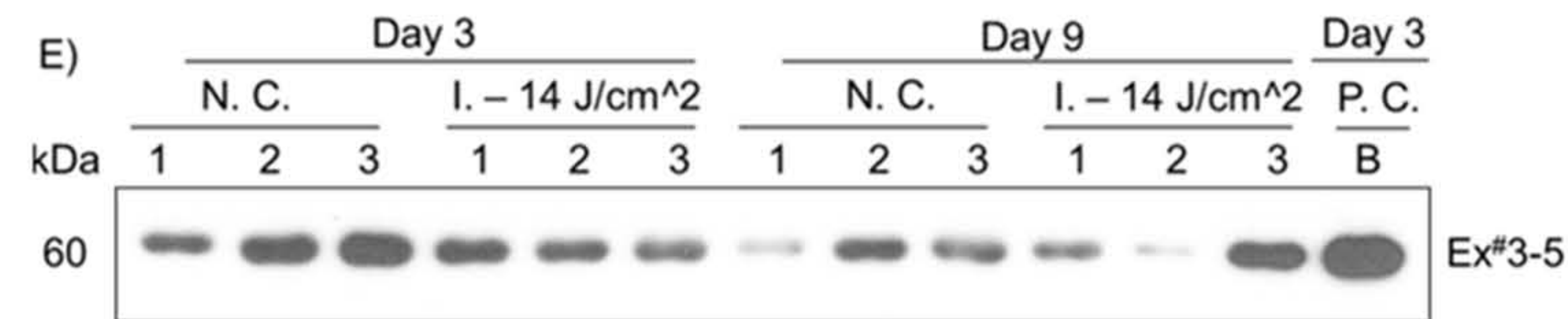
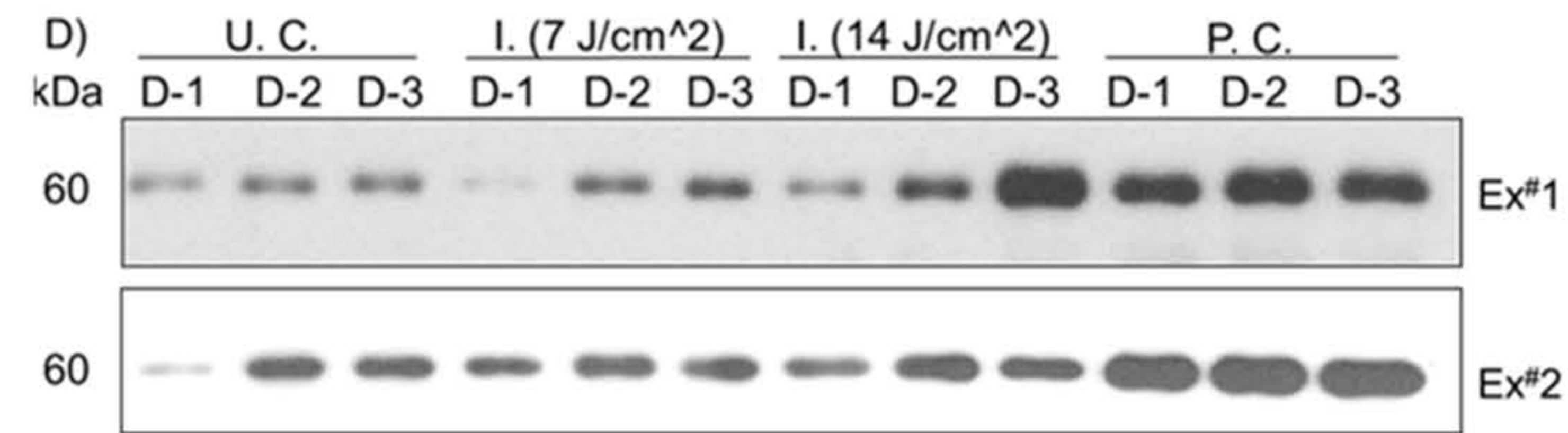
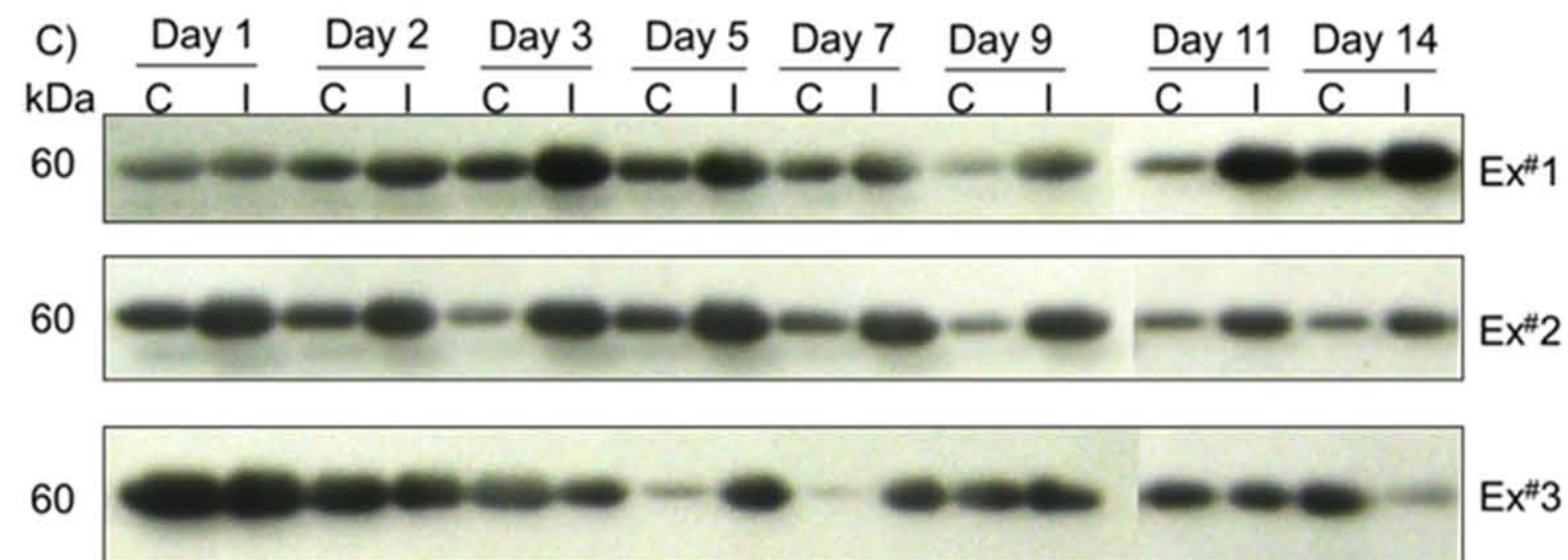
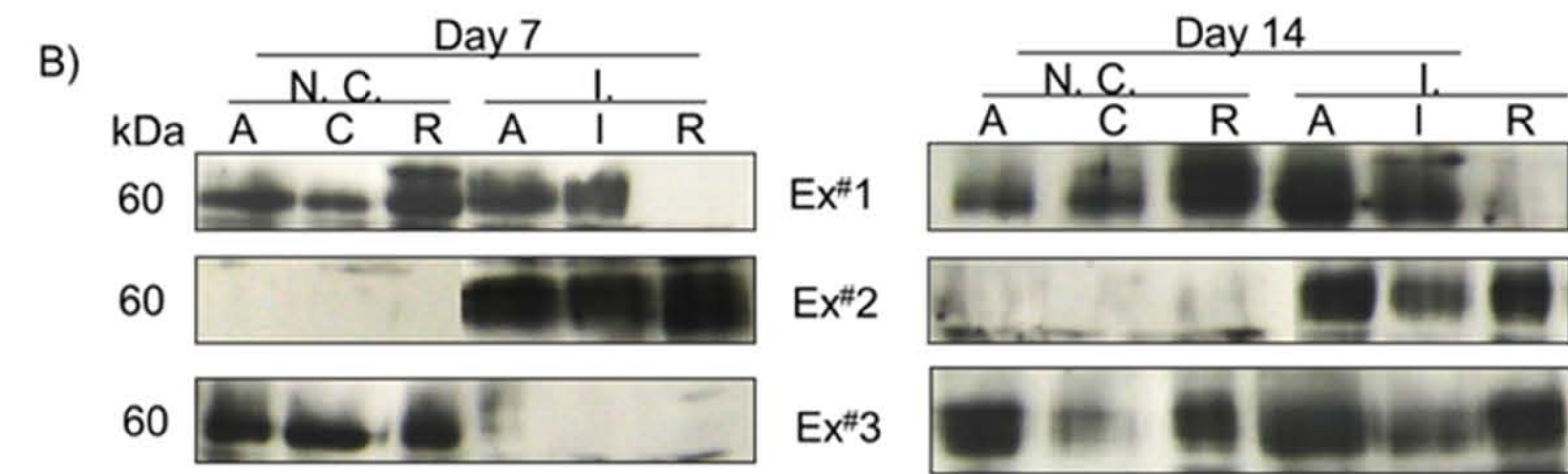
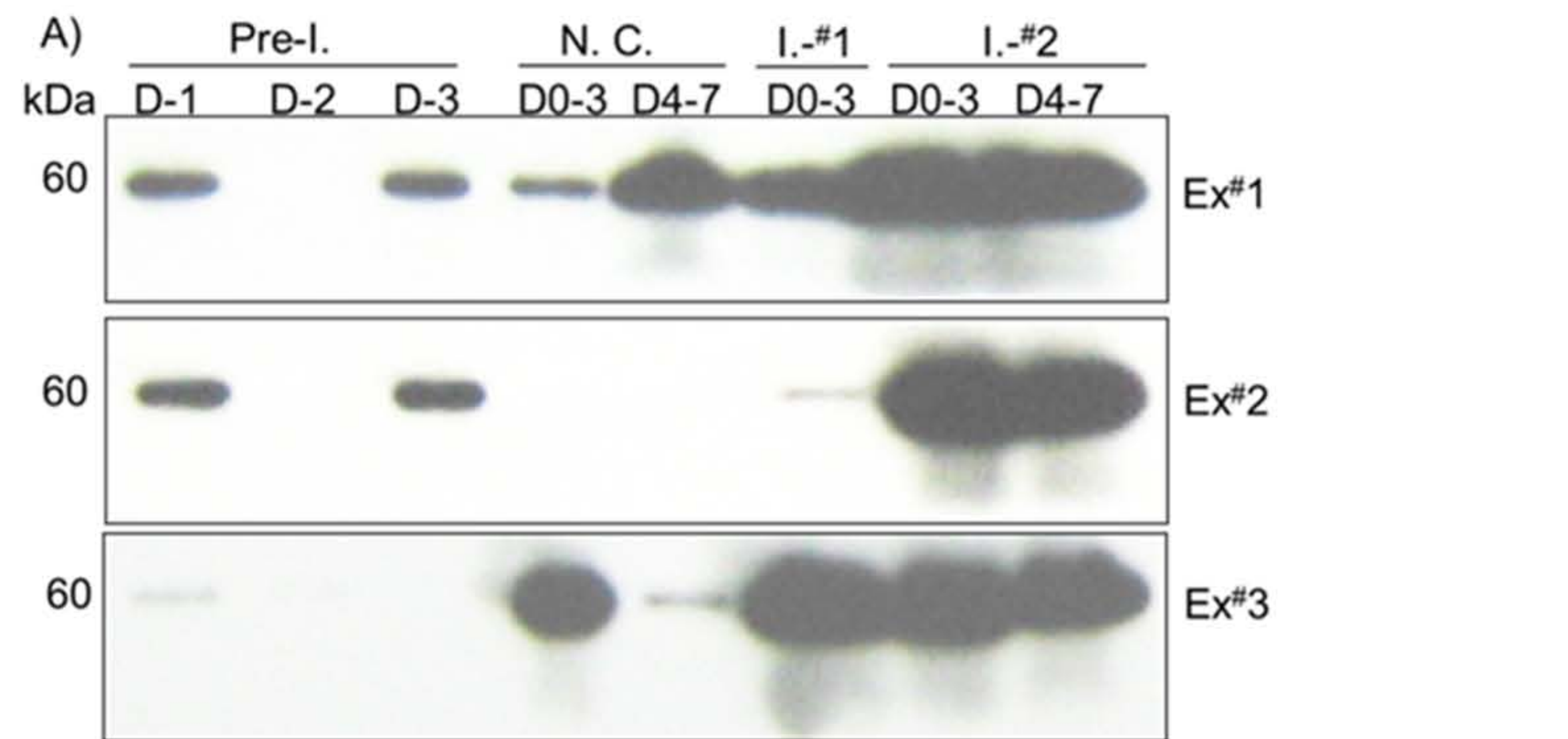
Supplementary Figure 2

ADAMTS-5



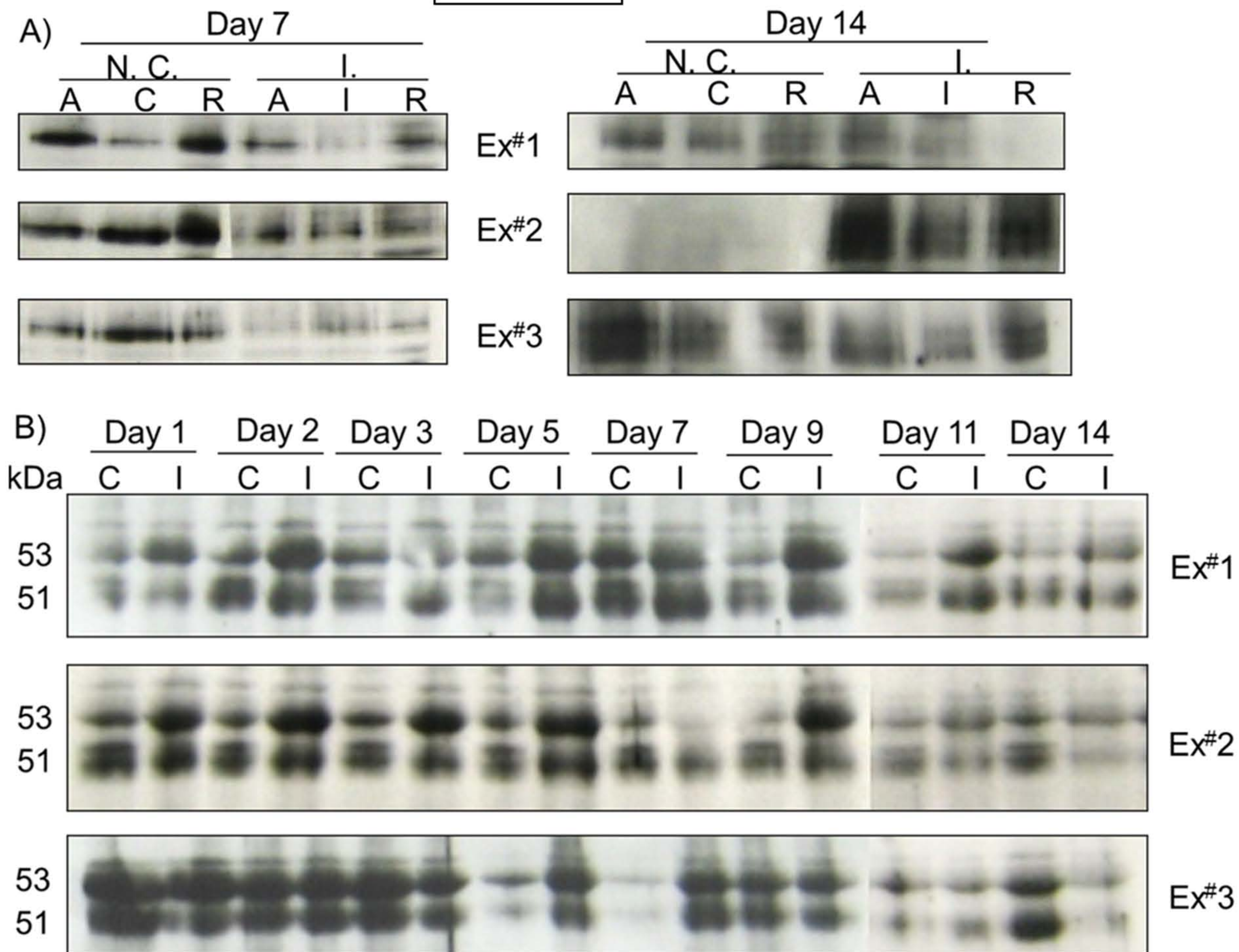
Supplementary Figure 3

MMP-13



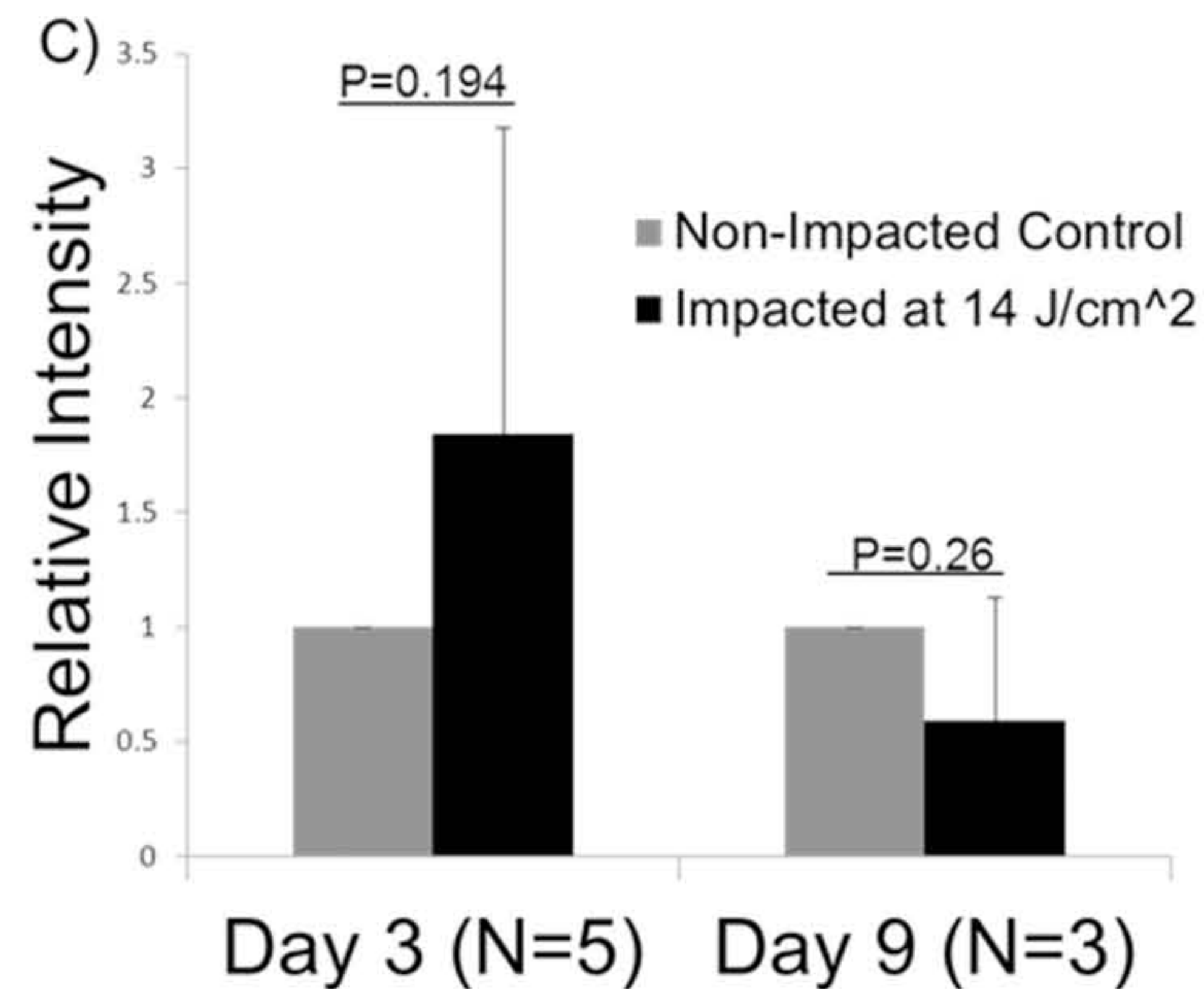
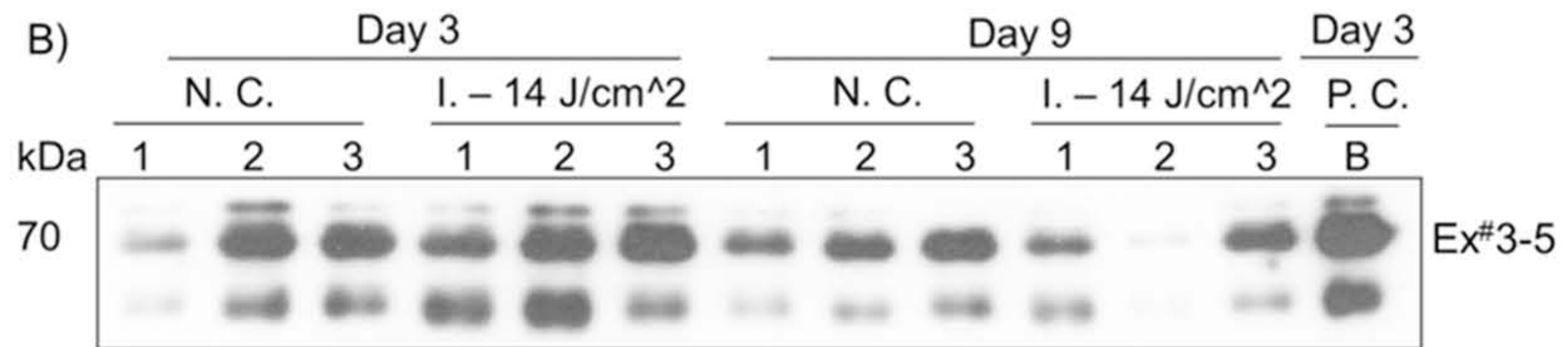
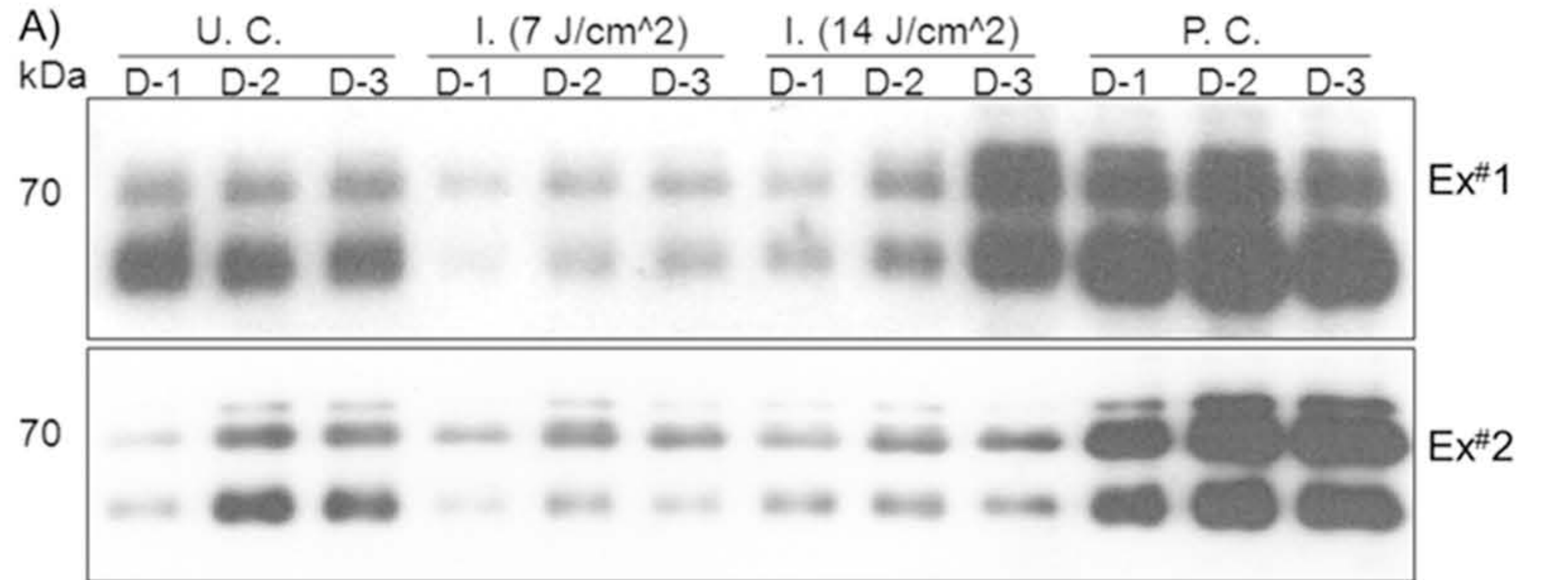
Supplementary Figure 4

MMP-1

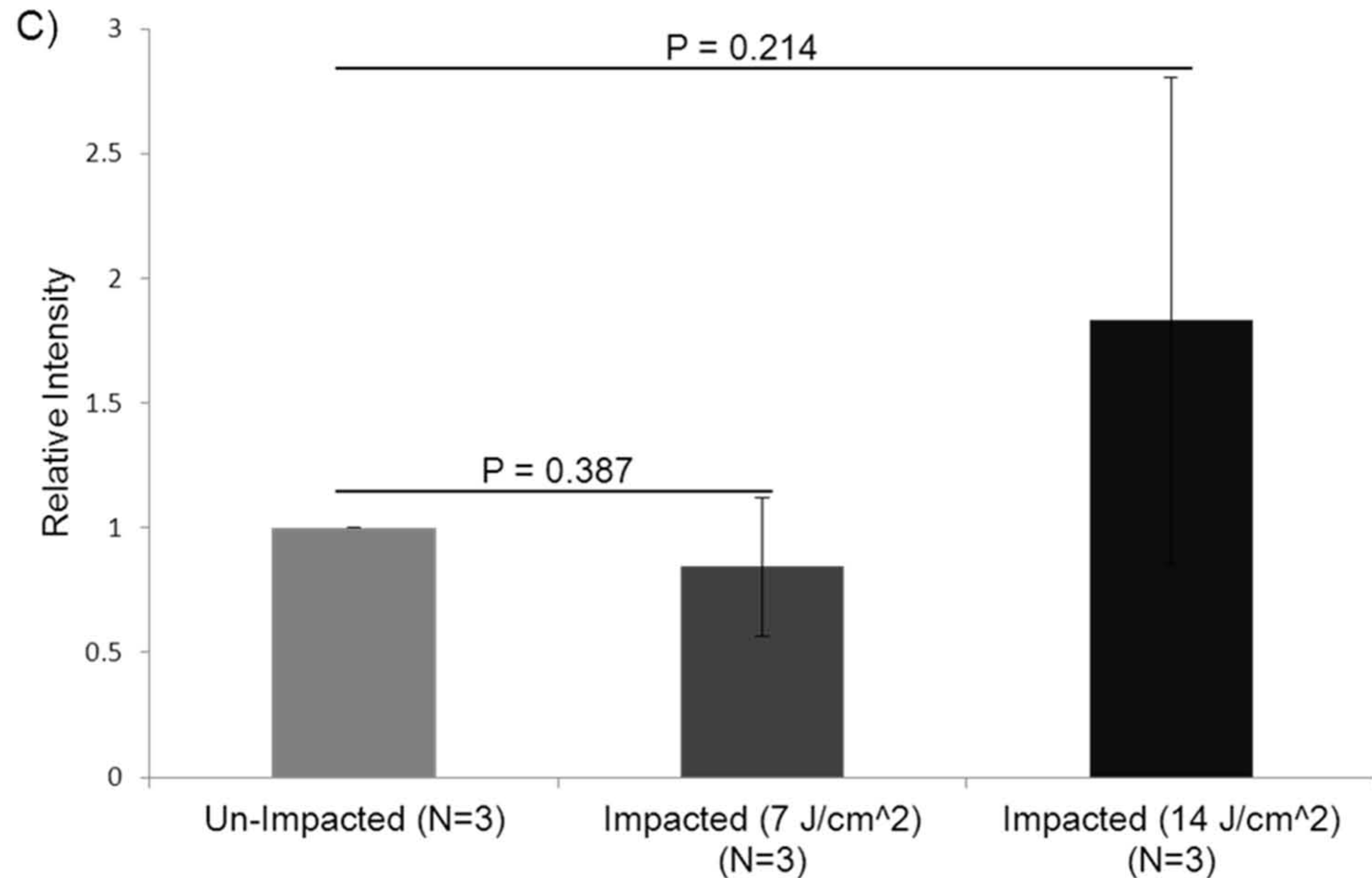
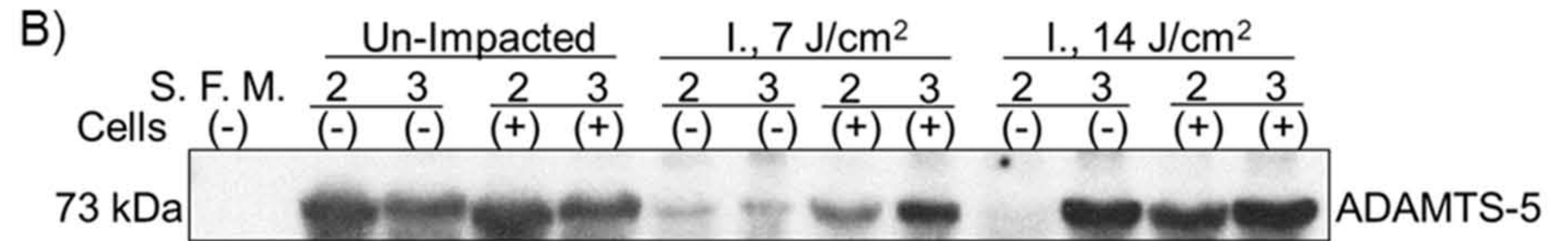
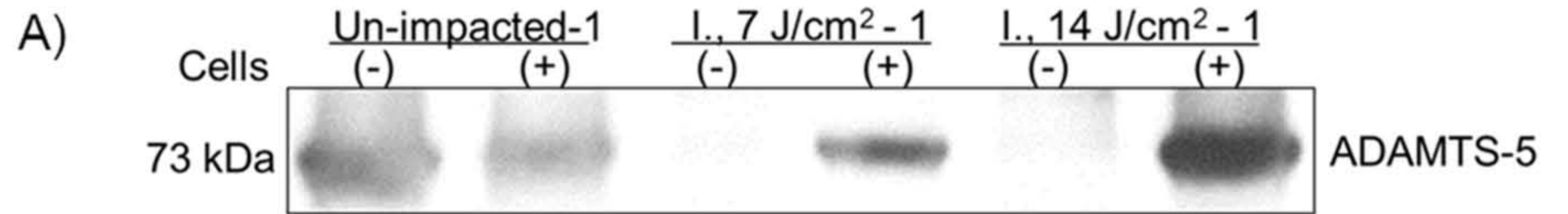


Supplementary Figure 5

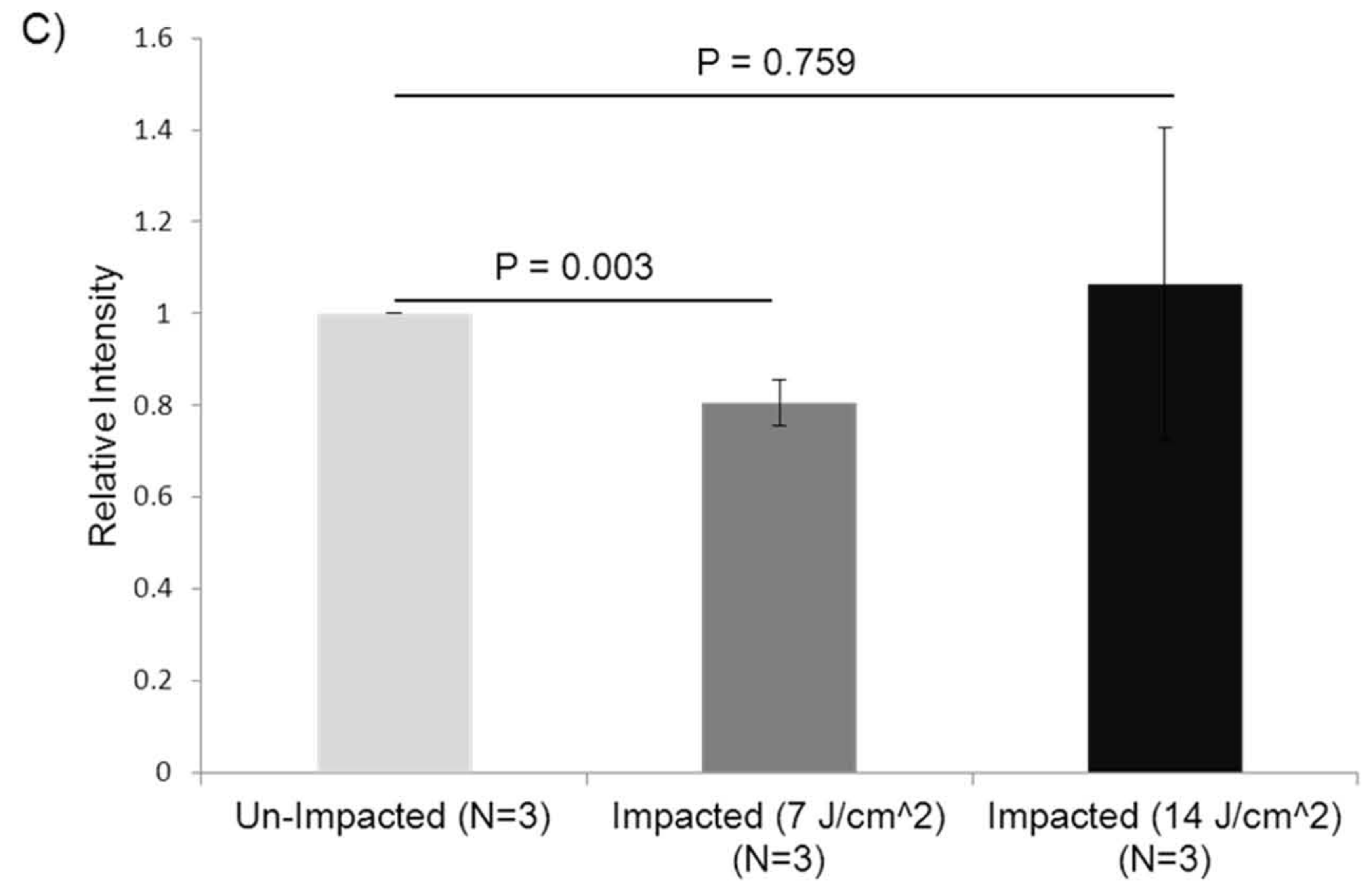
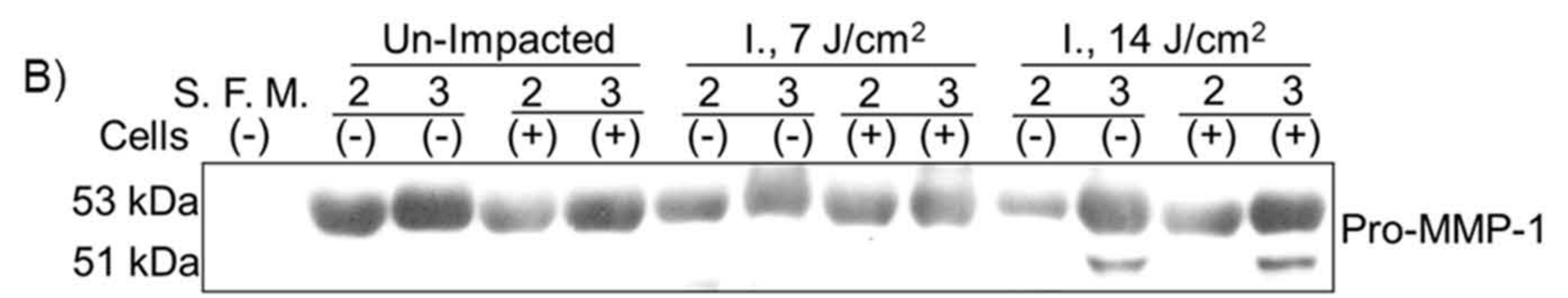
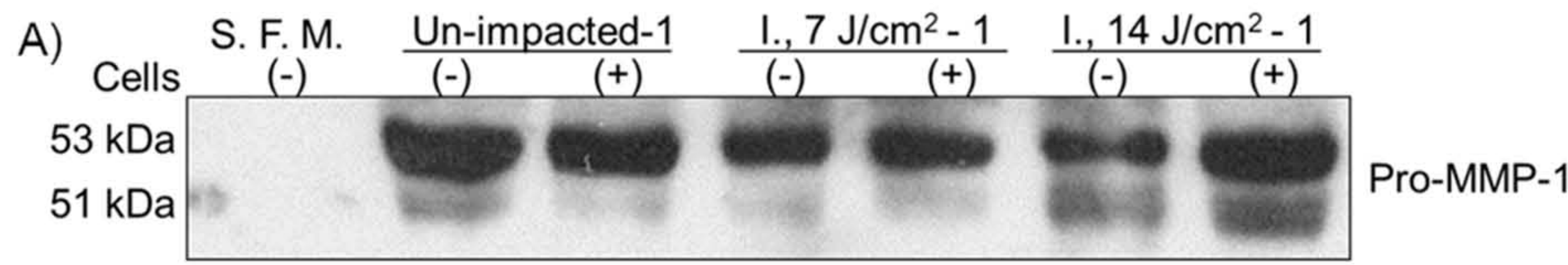
ADAM-8



ADAMTS-5 by Conditioned Medium

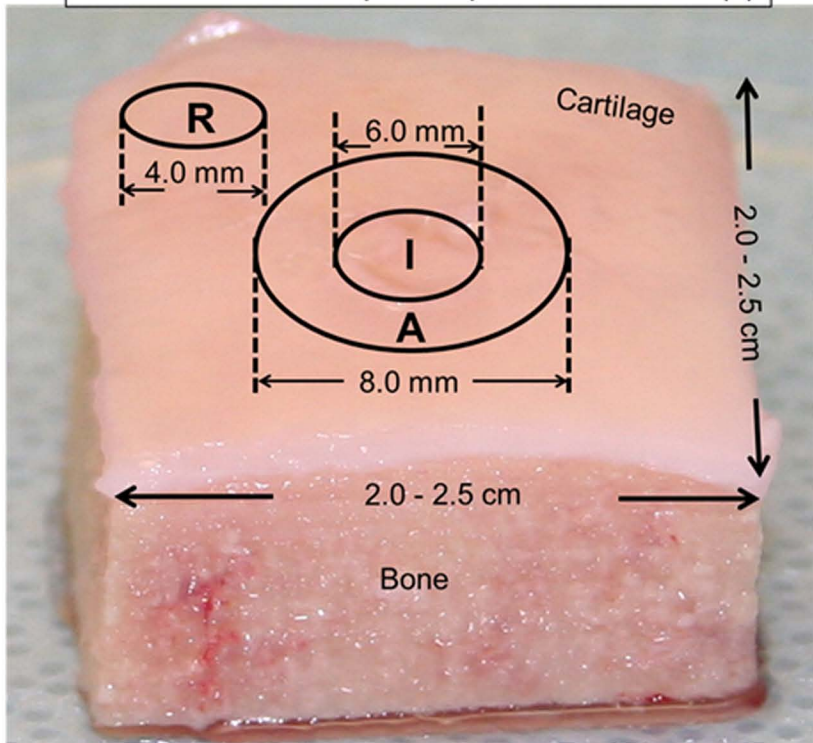


MMP-1 by Conditioned Medium

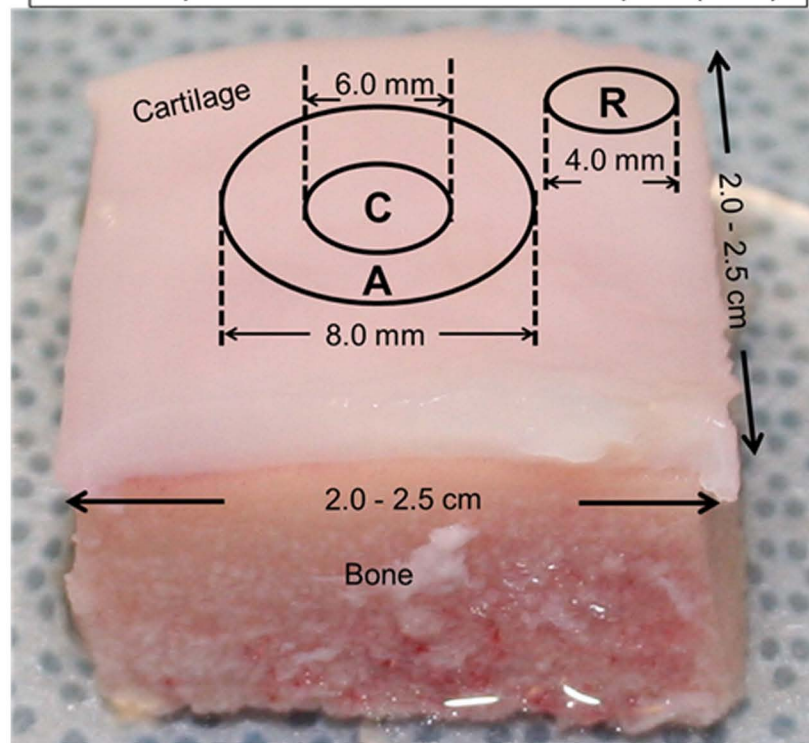


Supplementary Figure 8

An Osteochondral Explant Impacted at 14 J/cm² (I.)



A Non-Impacted Control Osteochondral Explant (N. C.)



Full-thickness zonal cartilage was sampled with 4.0-mm, 6.0-mm, and 8.0-mm biopsy punches. I = Impact zone/site; C = Center; A = Annulus; R = Remote area/site.