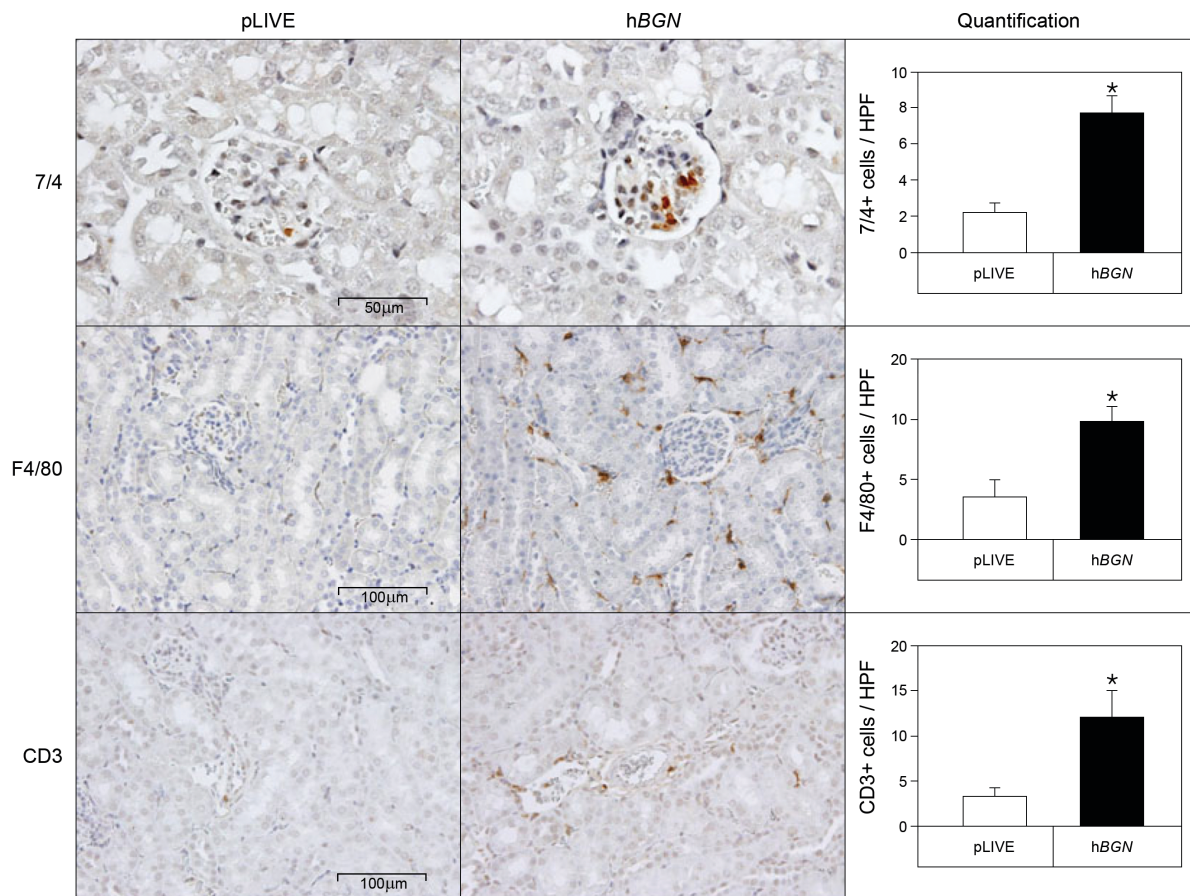
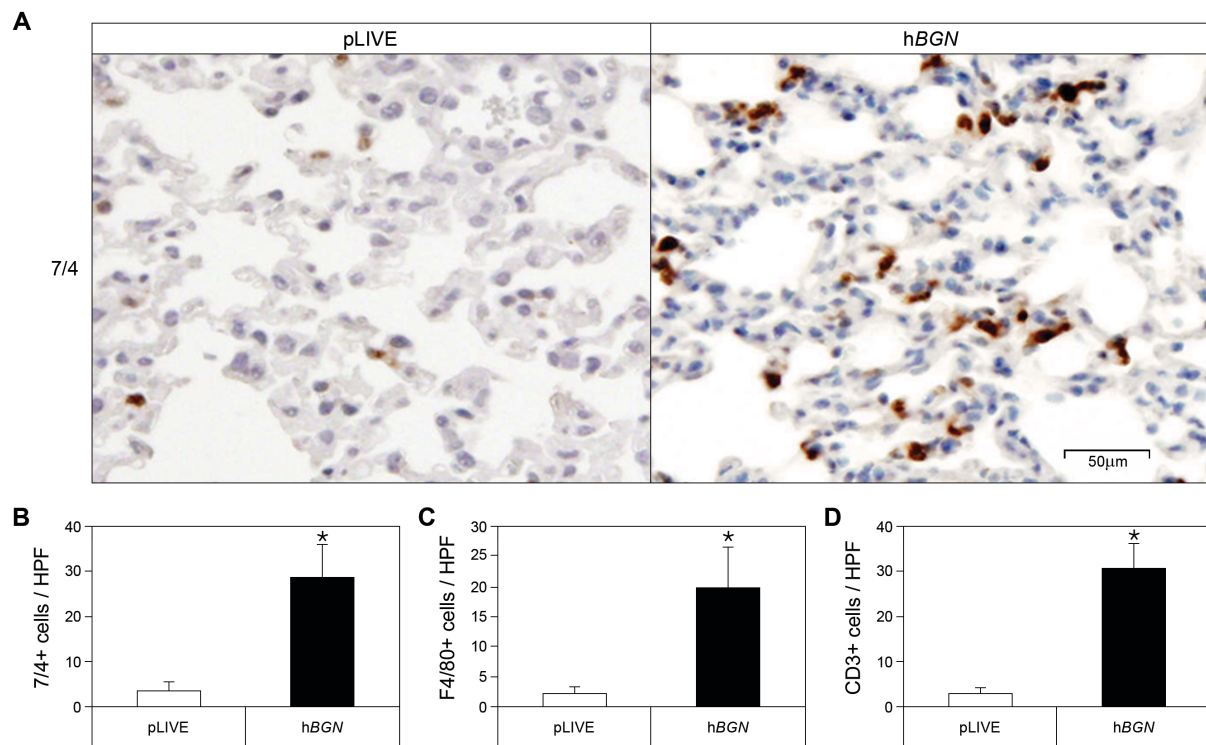


**SUPPLEMENTAL FIGURE 1**



**Fig. S1. Increased infiltration of leukocytes in renal parenchyma of hBGN transgenic mice.** Immunohistochemical stainings (3,3'-Diaminobenzidine with Meyer's Heamatoxylin counterstaining) and respective quantifications of neutrophils (7/4, brown, top), macrophages (F4/80, brown, middle) and T cells (CD3, brown, bottom) in renal sections from in C57BL/6 mice transfected with either empty vector (pLIVE) or human biglycan (hBGN) at day 4 following transfection. Immunoreactive cells were quantified in at least 15 high-power fields/section by a blinded observer. Scale bars indicate the magnification. Data are given as mean ± SEM; \*p<0.05, n=3.

## SUPPLEMENTAL FIGURE 2



**Fig. S2. Overexpression of soluble biglycan (hBGN transgenic mice) evokes infiltration of leukocytes into the lungs.** (A) Immunohistochemical staining (3,3'-Diaminobenzidine with Meyer's Heamatoxylin counterstaining) of neutrophils (7/4, brown) in lung sections from in C57BL/6 mice transfected with either empty vector (pLIVE) or human biglycan (hBGN) at day 4 following transfection. Scale bar = 100  $\mu$ m. (B-D) Quantification of neutrophils (B), macrophages (F4/80) (C) and T lymphocytes (CD3) (D). The immunoreactive cells cells were quantified in at least 15 high-power fields/section. Data are given as mean  $\pm$  SEM; \* $p$ <0.05,  $n$ =3.