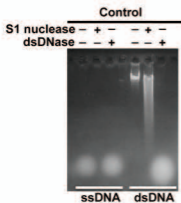
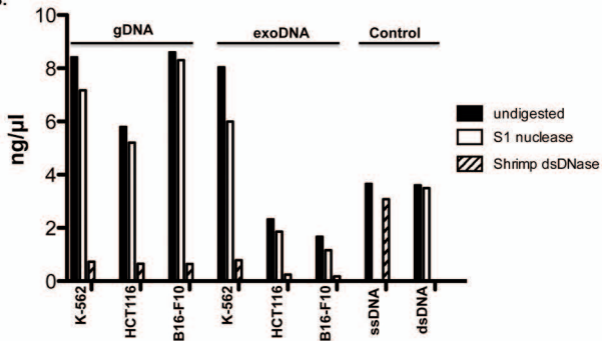


**A.****B.**

Supplementary information, Figure S1 **(A)** Control digestion of ssDNA oligonucleotide and Lambda dsDNA was performed to verify the specificity of the enzymes. **(B)** Total gDNA and exoDNA isolated from K-562, HCT116 and B16-F10 cells were quantified using the QuantiFluor dsDNA System after the DNA samples were treated with either S1 nuclease or dsDNase. ssDNA oligonucleotide and Lambda dsDNA were treated in parallel with either S1 nuclease or dsDNase as control.