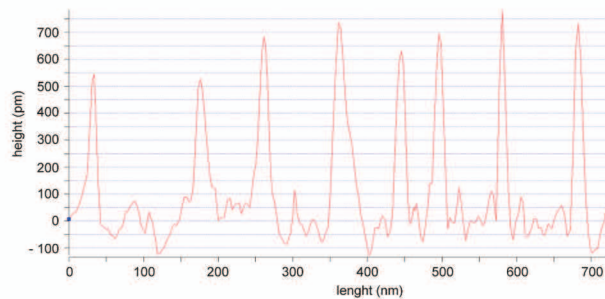
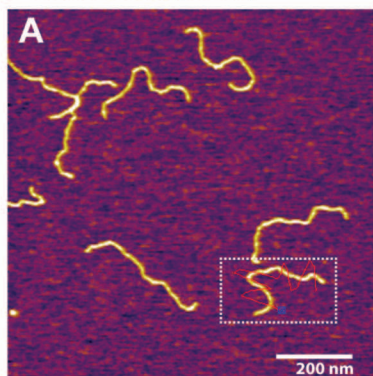
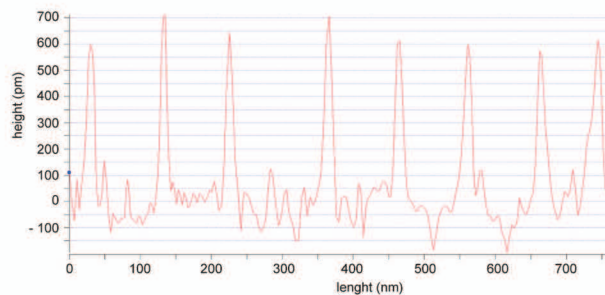
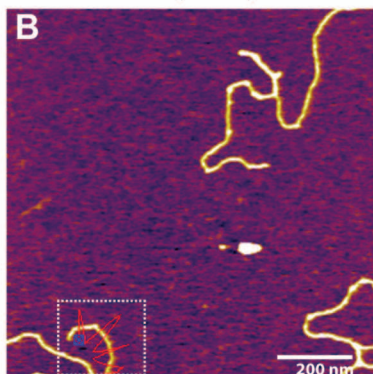


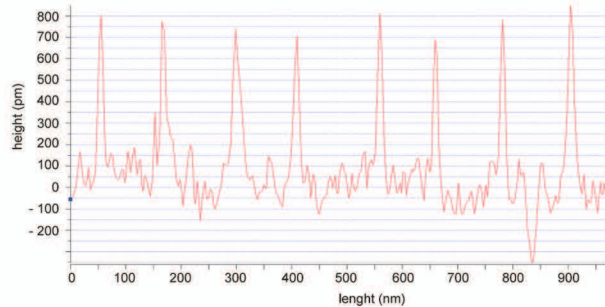
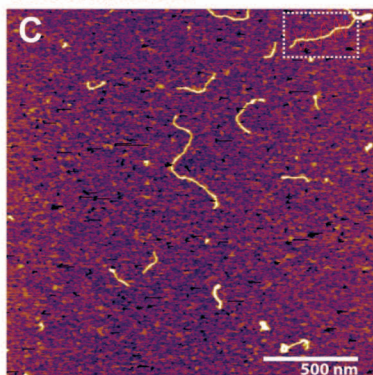
control dsDNA (1.2 kb)



control dsDNA (5.9 kb)



exosomal dsDNA



Supplementary information, Figure S2 Comparison of the height of linearized control dsDNA and exosomal DNA using AFM imaging. Linearized control dsDNA of 1.2 kb (A), 5.9 kb (B) and exosomal DNA extracted from K-562 leukemia cells (C) was absorbed on a mica surface in the presence of 5mM  $Mg^{2+}$  prior to imaging. Scale bars displayed in each AFM image represent the respective sizes noted in the image. The graphs represent multiple height measurements of each DNA strand (white dashed box).