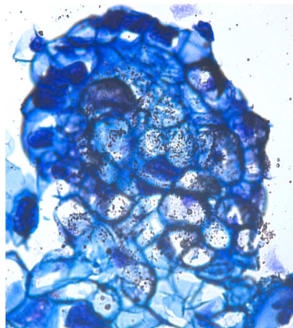
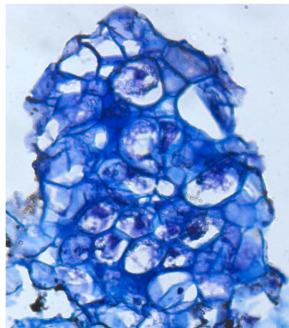


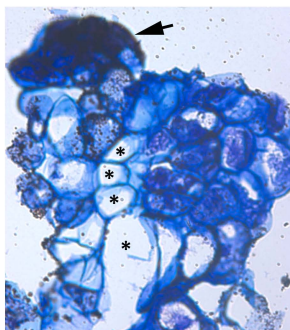
WT



ZmHb1 (A)



ZmHb2(A)



Supplemental Figure 7. Localization of reduced ascorbic acid (ASC) in immature (day 7, P medium) maize embryos produced by the WT line and *ZmHb1(A)* and *ZmHb2(A)* lines. Small silver grains denote accumulation of ASC. * show cells devoid of silver grains. Arrow indicates a developing embryo originating from the surface of the embryogenic tissue. Scale bars = 15 μ m