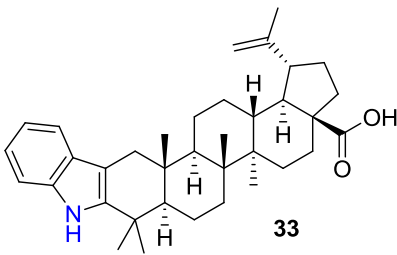
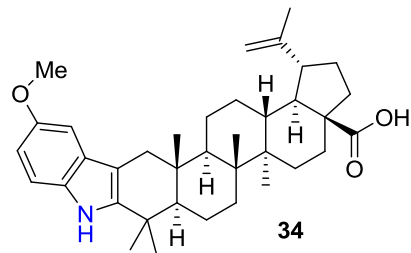


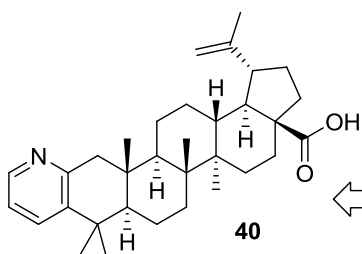
$IC_{50} = 1.4 \mu M$   
Max inhibition 100%



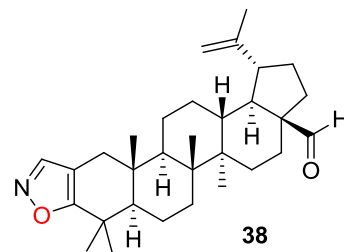
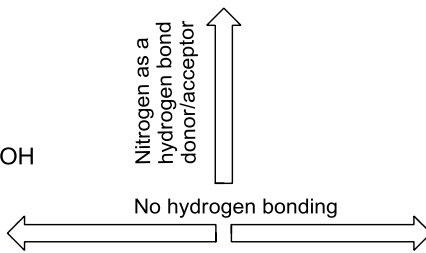
$IC_{50} = 0.9 \mu M$   
Max inhibition 65%



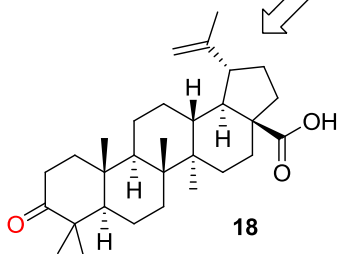
$IC_{50} = 1.6 \mu M$   
Max inhibition 100%



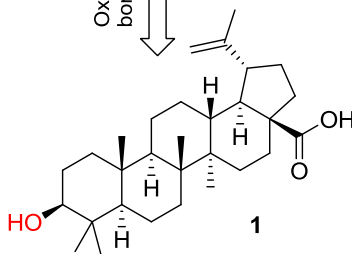
35% inhibition at  $10 \mu M$



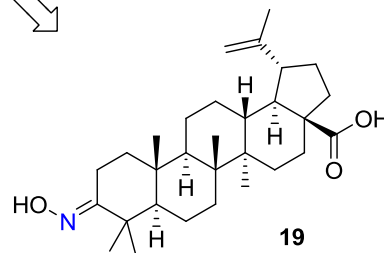
No inhibition at  $10 \mu M$



$IC_{50} = 3.3 \mu M$   
Max inhibition 100%



$IC_{50} = 2.5 \mu M$



$IC_{50} = 12 \mu M$   
Max inhibition 100%