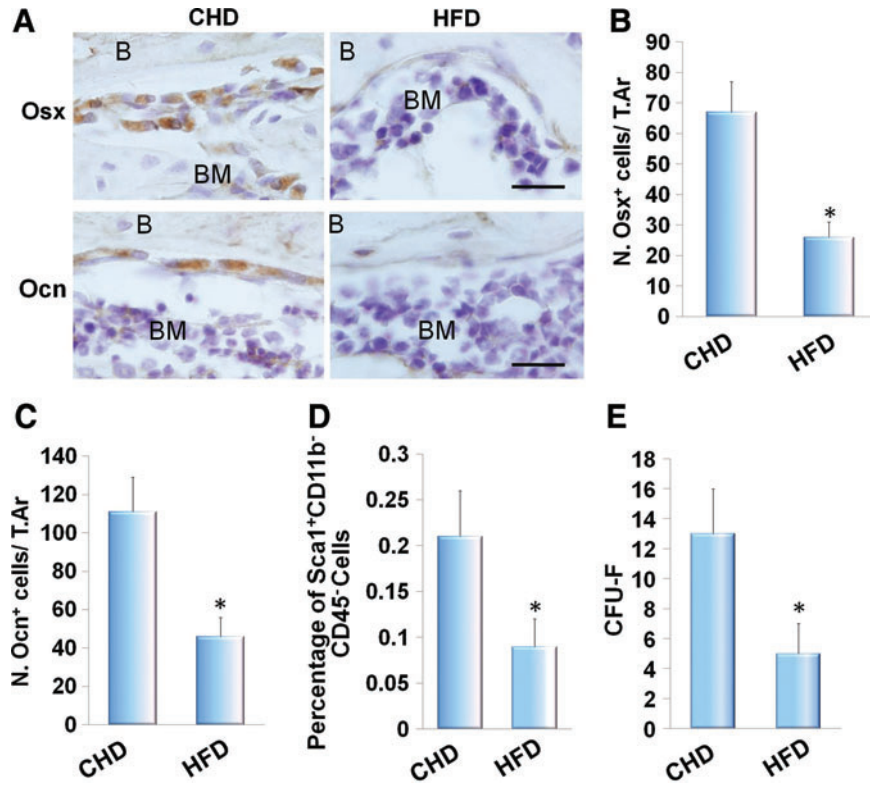


Supplementary Data



SUPPLEMENTARY FIG. S1. Reduced mesenchymal stem cells and osteoblastogenesis in the skeleton of *ldlr*^{-/-} mice fed HFDs. (A) Representative immunohistochemical staining of osterix (Osx) and osteocalcin (Ocn) in femur sections of *ldlr*^{-/-} mice fed CHD or HFD for 12 weeks. B, bone; BM, bone marrow. Number of Osx-positive cells per mm² tissue area (N.Osx⁺ cells/T.Ar) (B) and number of Ocn-positive cells per mm² tissue area (N.Ocn⁺ cells/T.Ar) (C). *n*=5, **P*<0.001 versus CHD group. (D) Flow cytometry measured percentages of Sca1⁺CD29⁺CD11b⁻CD45⁻ cells in bone marrow of *ldlr*^{-/-} mice fed CHD or HFD for 12 weeks. *n*=5, **P*<0.01 versus CHD group. (E) Colonies formed from harvested bone marrow of left tibia of the *ldlr*^{-/-} mice fed CHD or HFD for 12 weeks in colony forming unit-fibroblast assay. *n*=5, **P*<0.001 versus CHD group. CHD, chew diet; HFD, high-fat western diets.