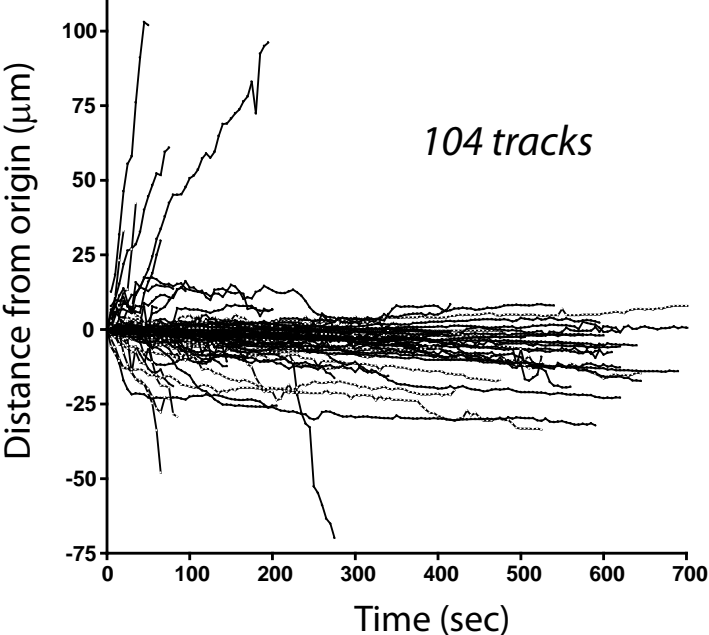
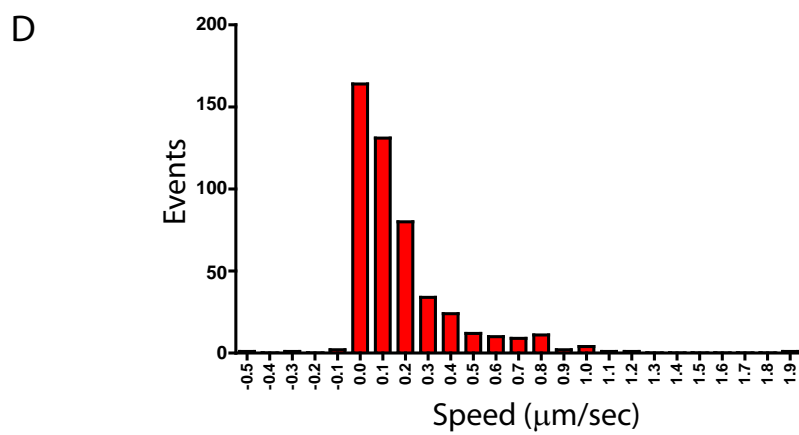
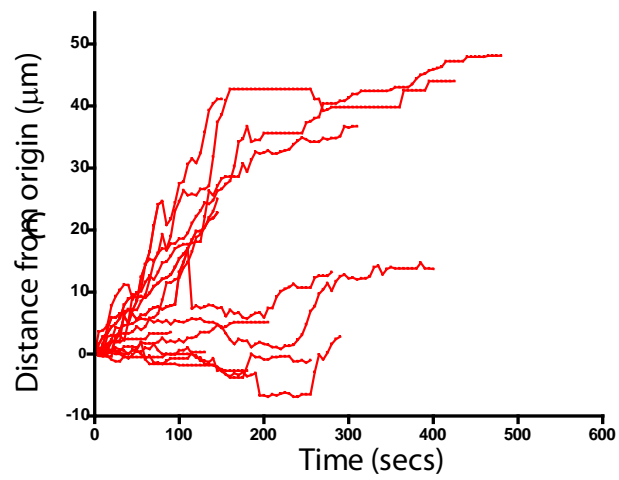
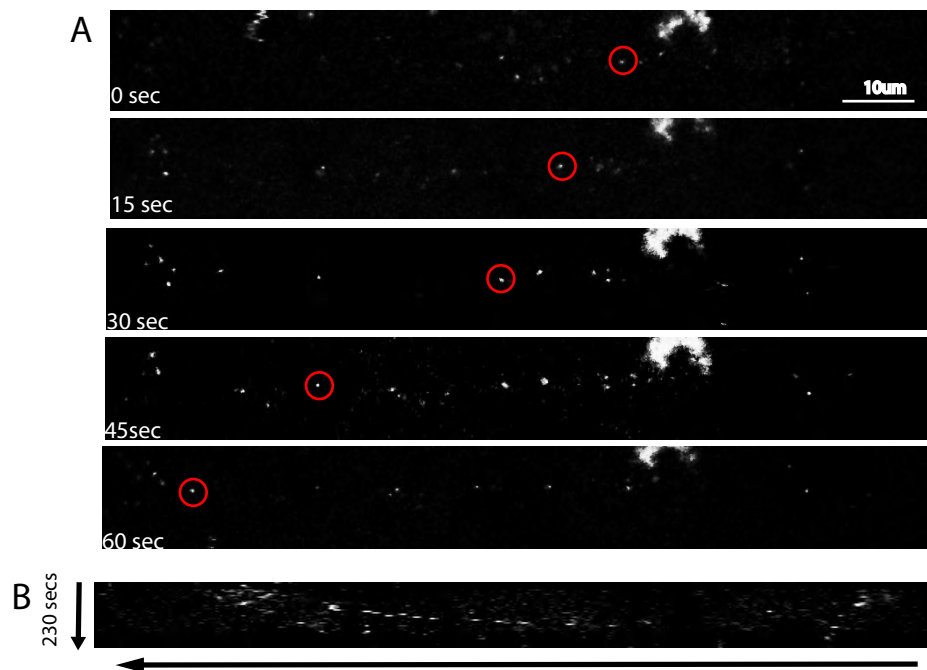


Supplemental Figure 1

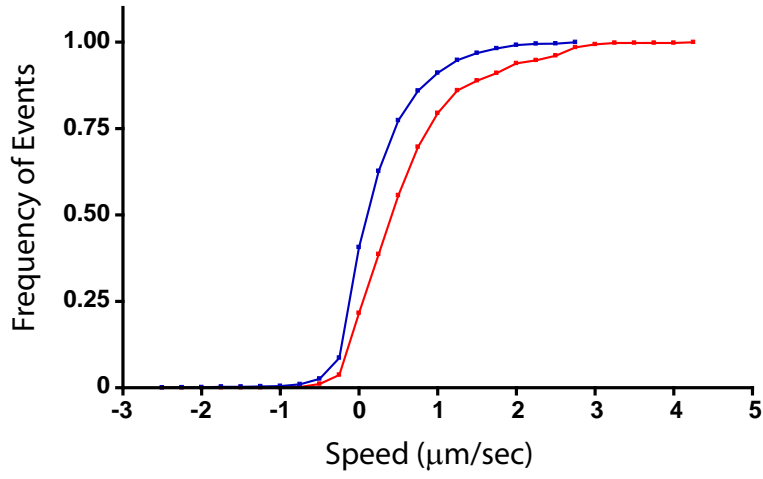


Supplemental Figure 2

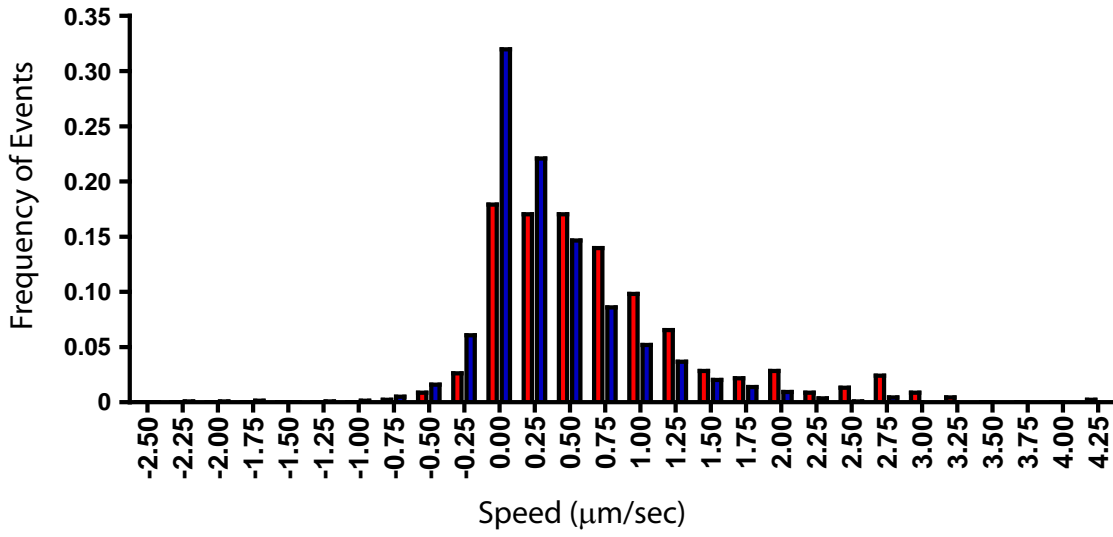


Supplemental Figure 3

A

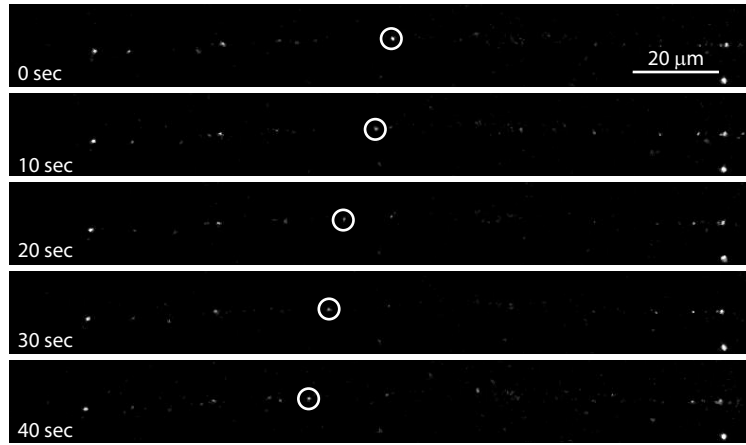


B



Supplemental Figure 4

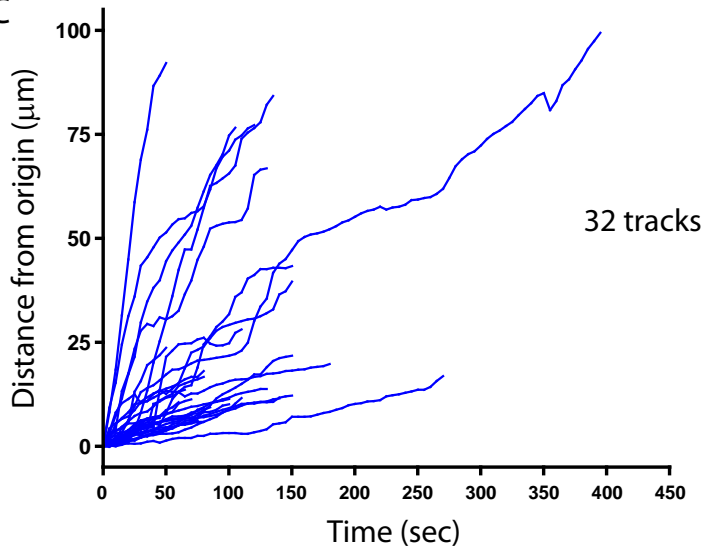
A



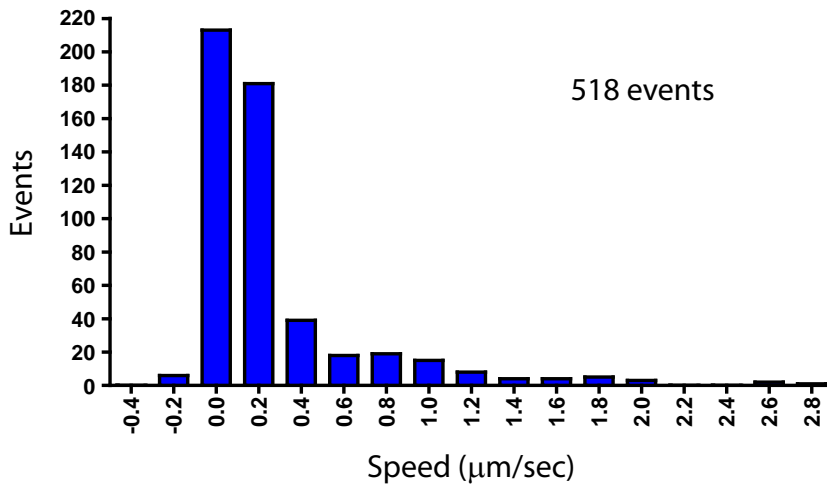
B



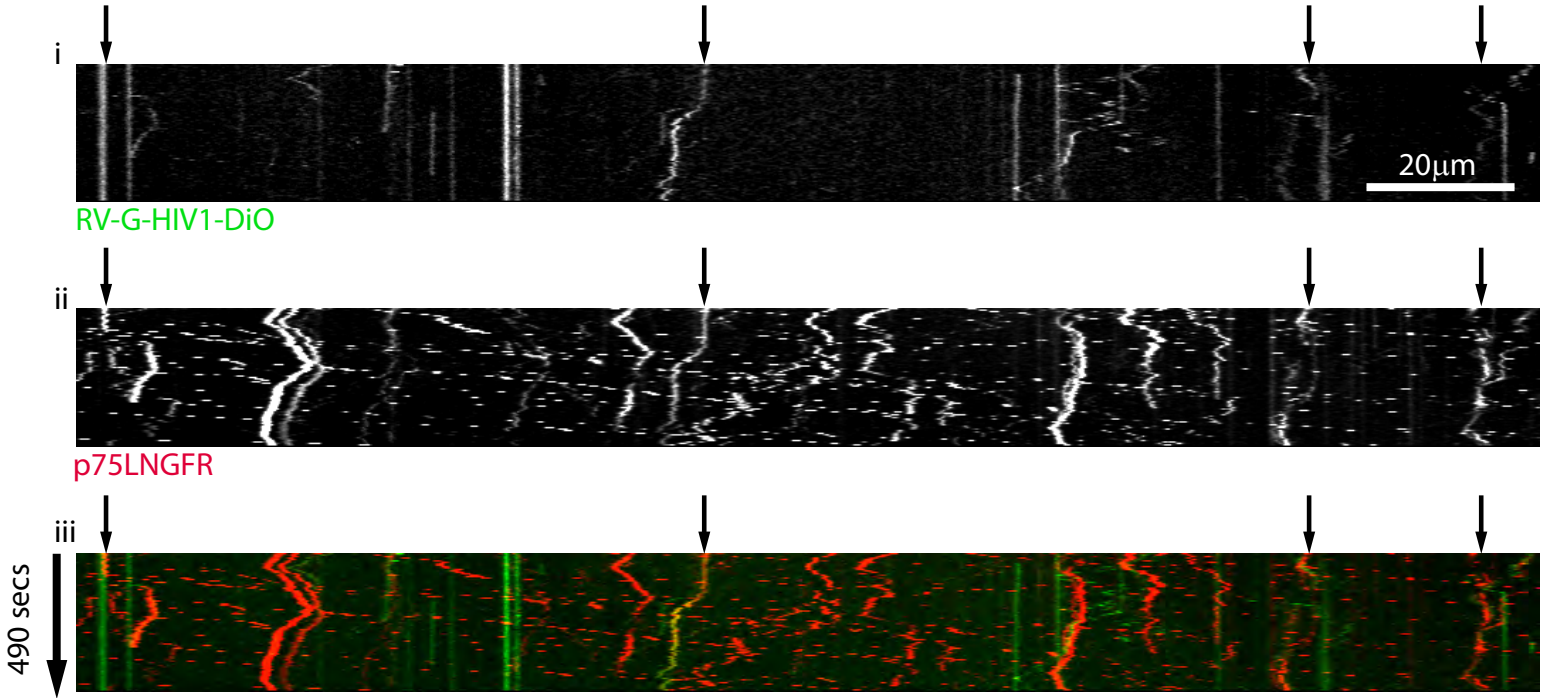
C



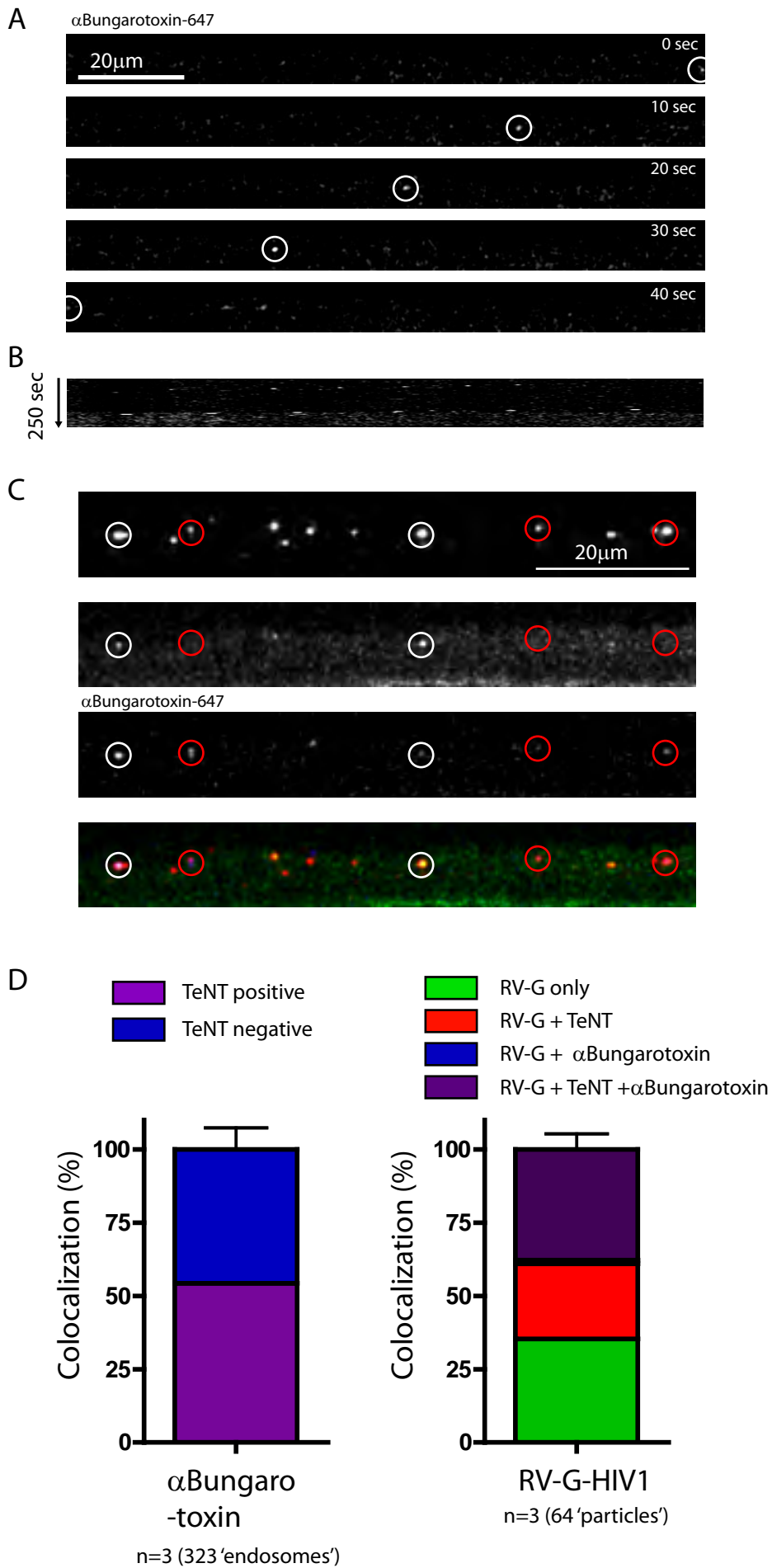
D



Supplemental Figure 5



Supplemental figure 6- Bungarotoxin trafficking



Supplemental figure 7

A

Somatic Chamber transduction

RV-G-HIV1-DiD

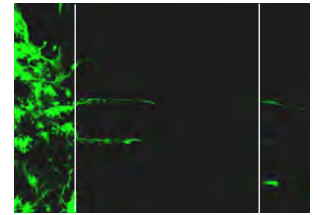
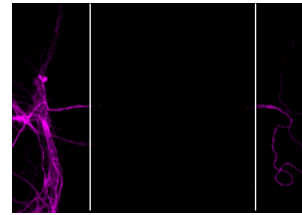
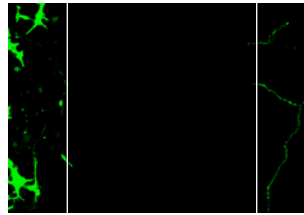
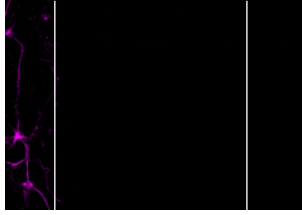
RV-G-HIV1-non-labelled

anti-SMI32-594

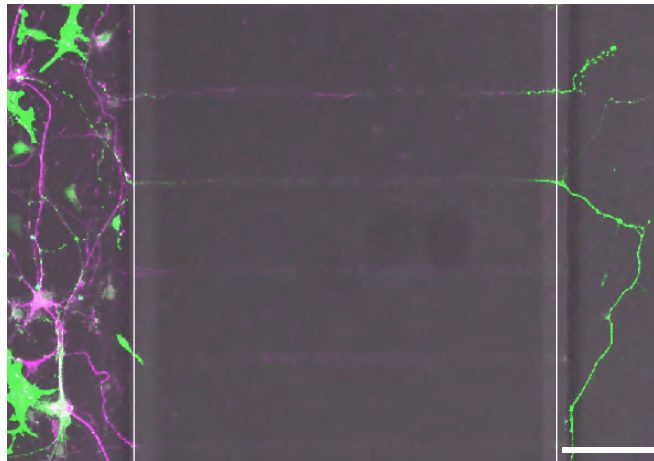
anti-GFP-488

anti-SMI32-594

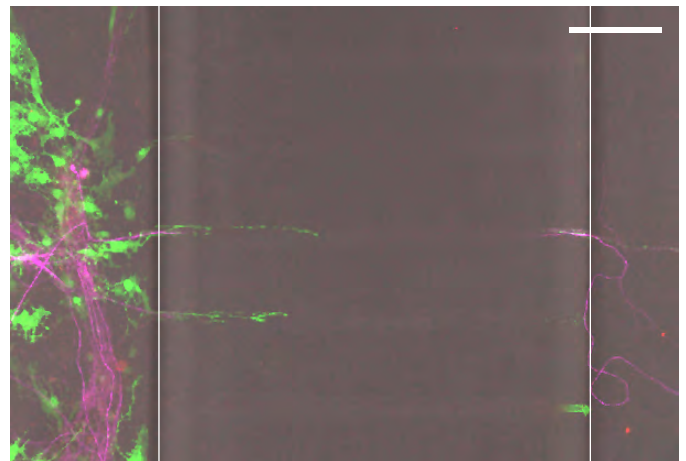
anti-GFP-488



Merge



Merge



B

Axonal Chamber transduction

RV-G-HIV1-DiD

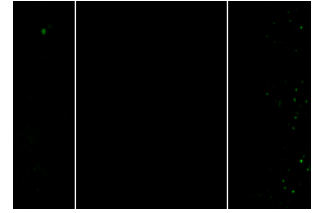
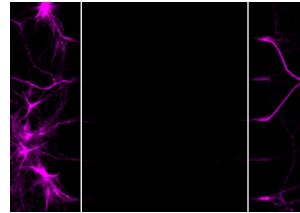
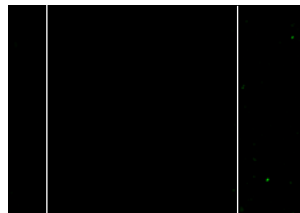
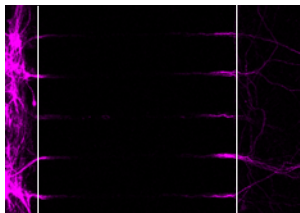
RV-G-HIV1-non-labelled

anti-SMI32-594

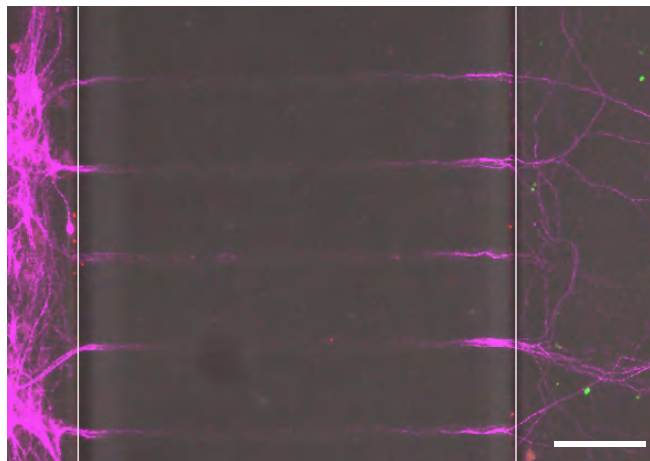
anti-GFP-488

anti-SMI32-594

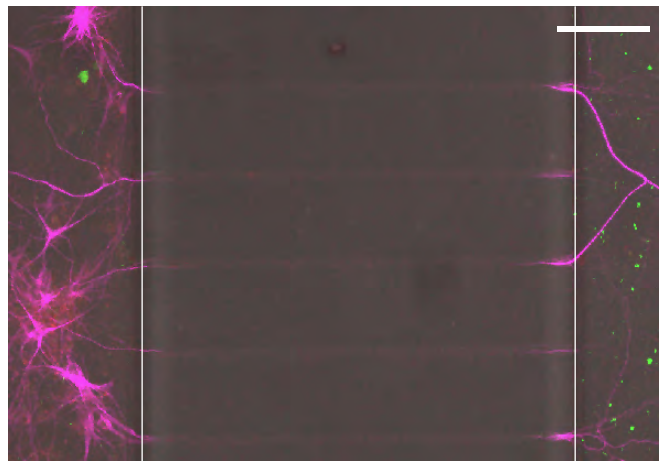
anti-GFP-488



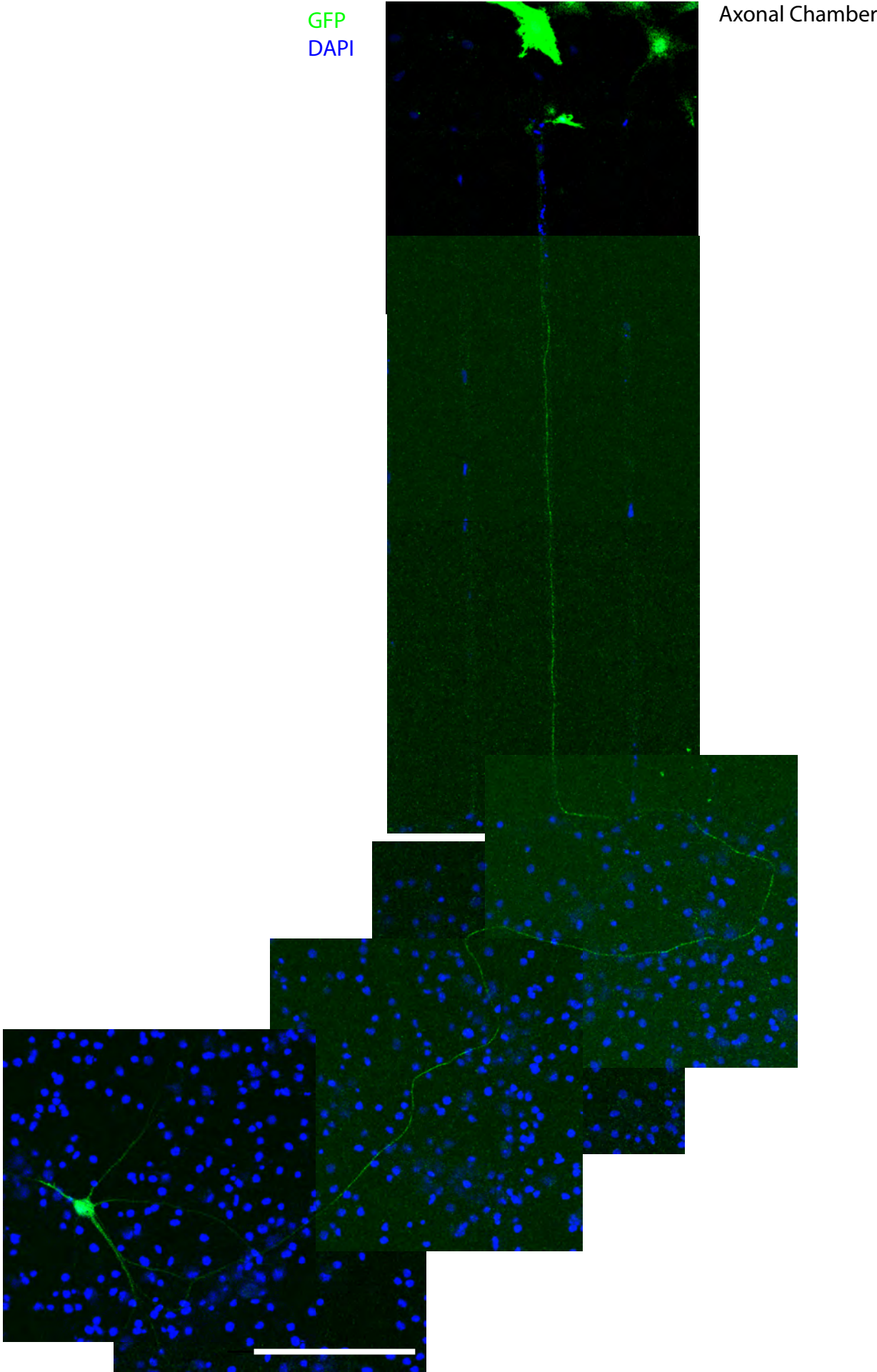
Merge



Merge



Supplemental figure 8



Supplemental figure 9

