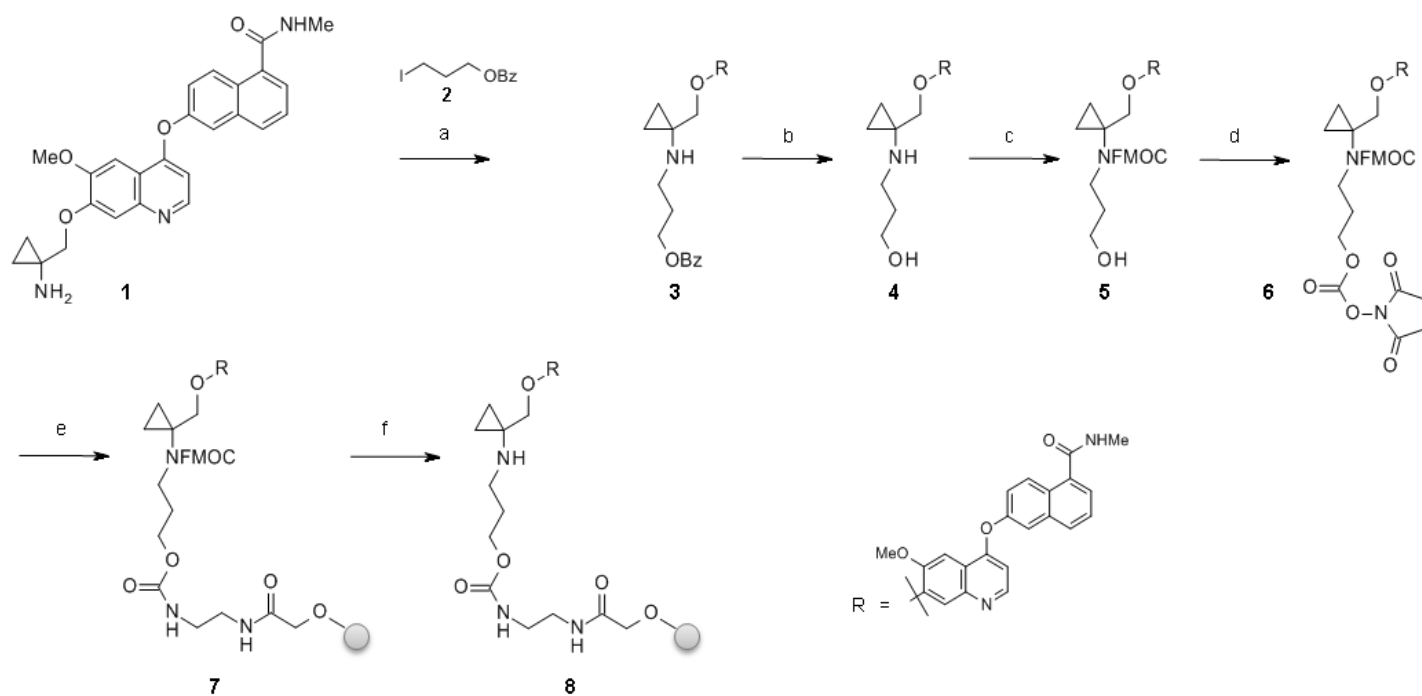


Quantitative chemical proteomics identifies novel targets of the anti-cancer
multi-kinase inhibitor E-3810

Colzani et al.

Supplemental Figures and Tables

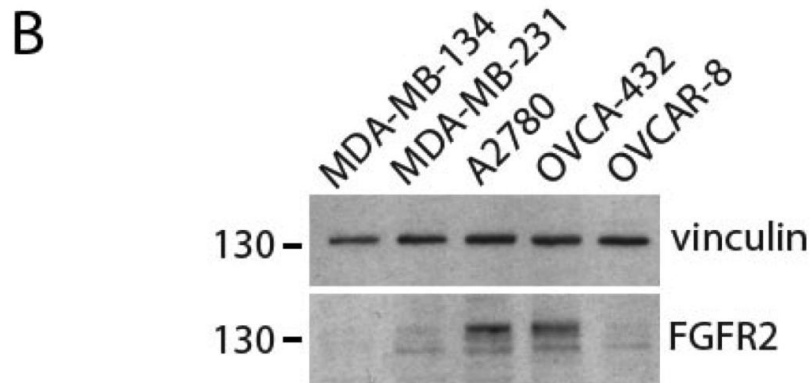
Supplementary Figure S1



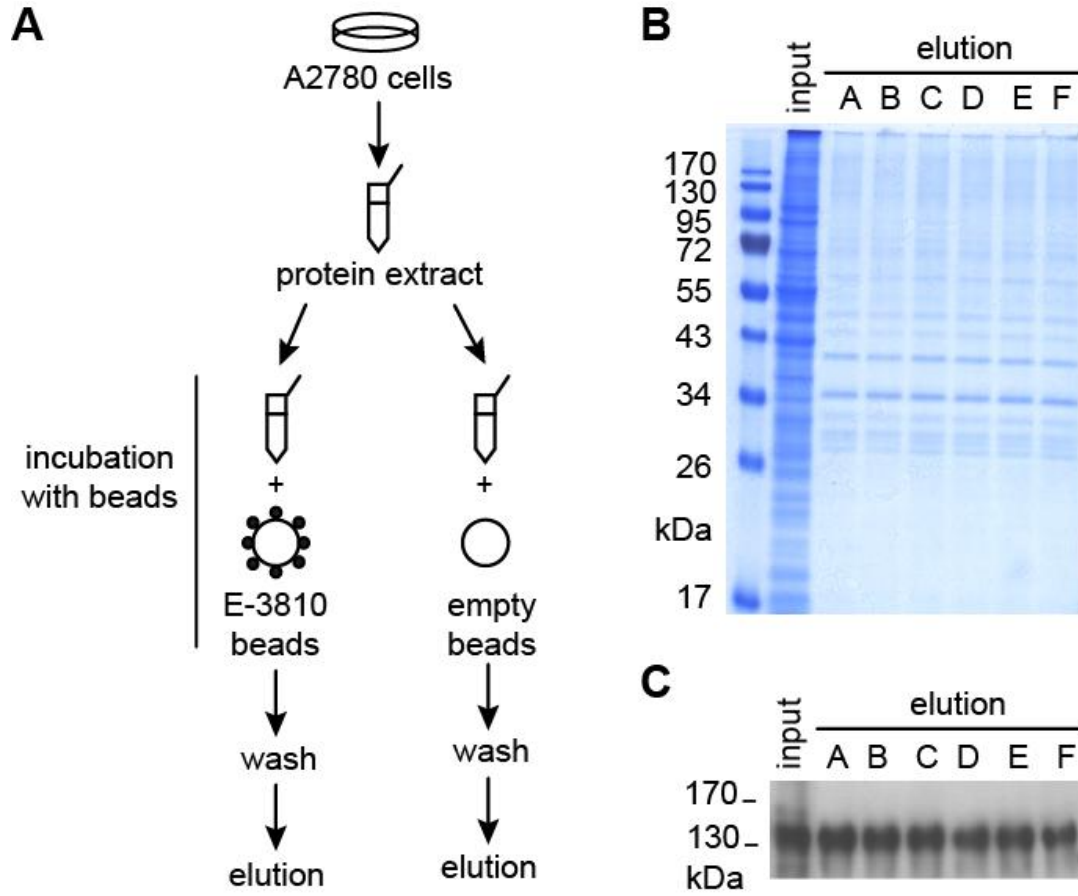
Supplementary Figure S2

A

Cell line	FRGF2 gene copy number	FGFR2 mRNA level (fold change vs HUVECs)	E3810 IC ₅₀ (μM)
MDA-MB-134	3	142	16 ± 8
MDA-MB-231	2	n.d.	38 ± 6
A2780	2	106	8 ± 2
OVCA-432	2	1106	19 ± 2
OVCAR-8	8	n.d.	7 ± 3

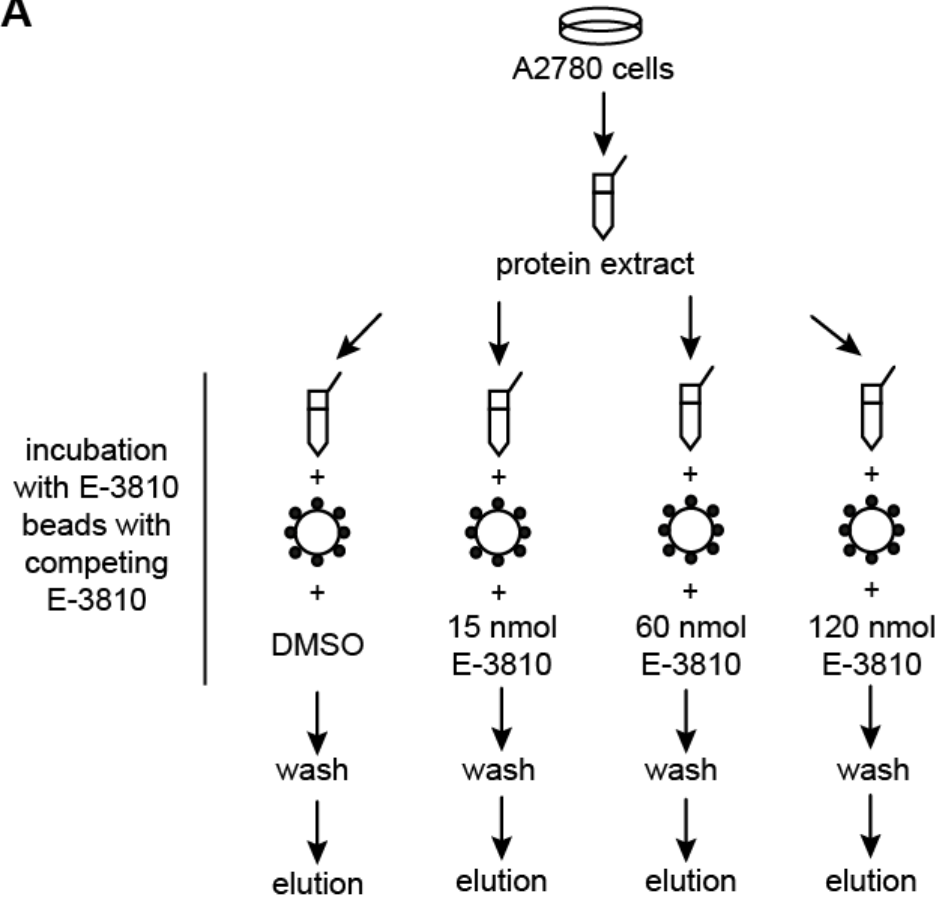


Supplementary Figure S3

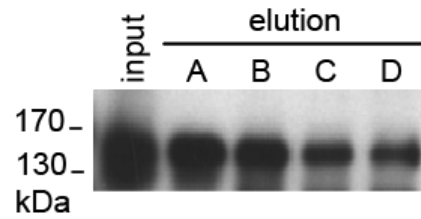


Supplementary Figure S4

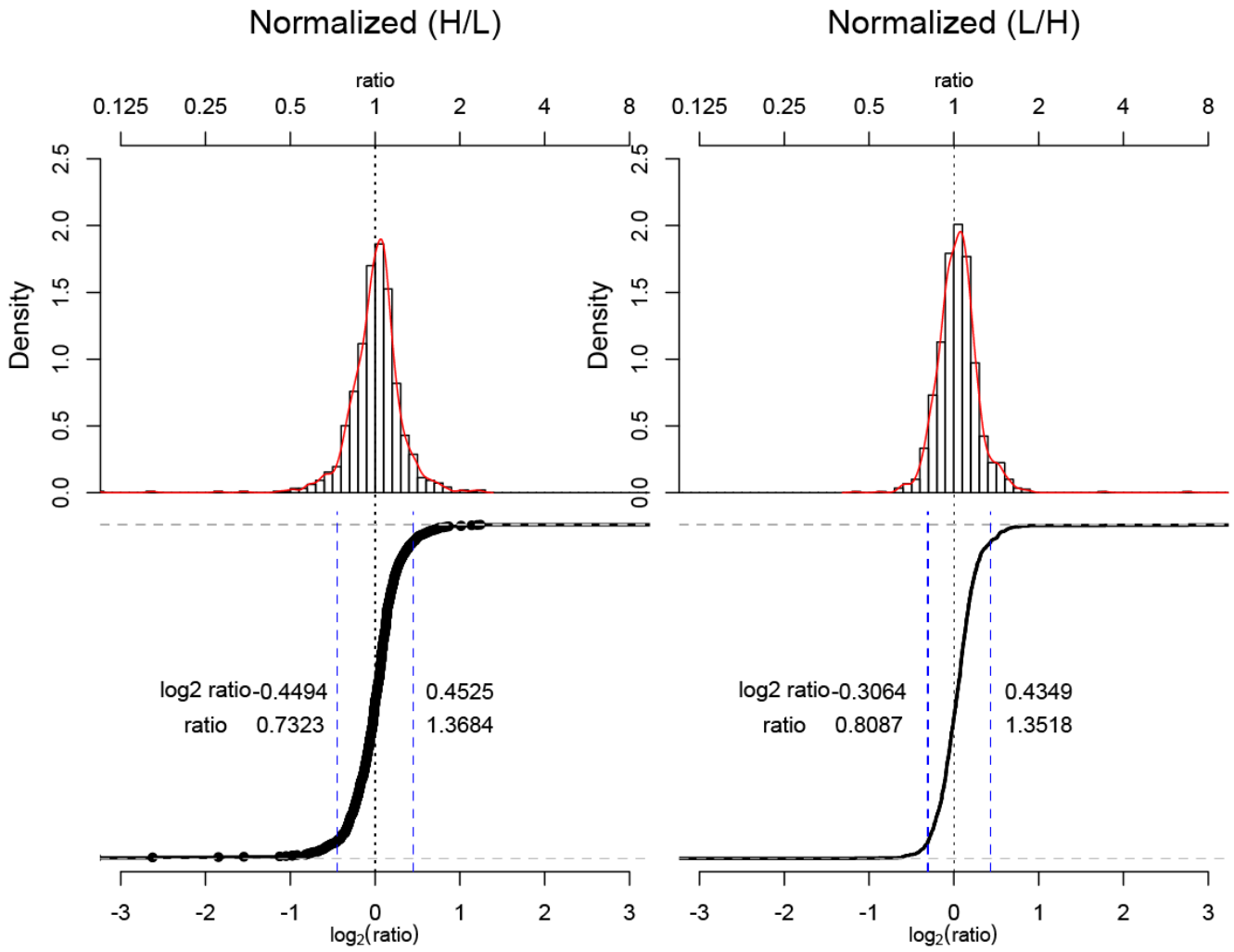
A



B

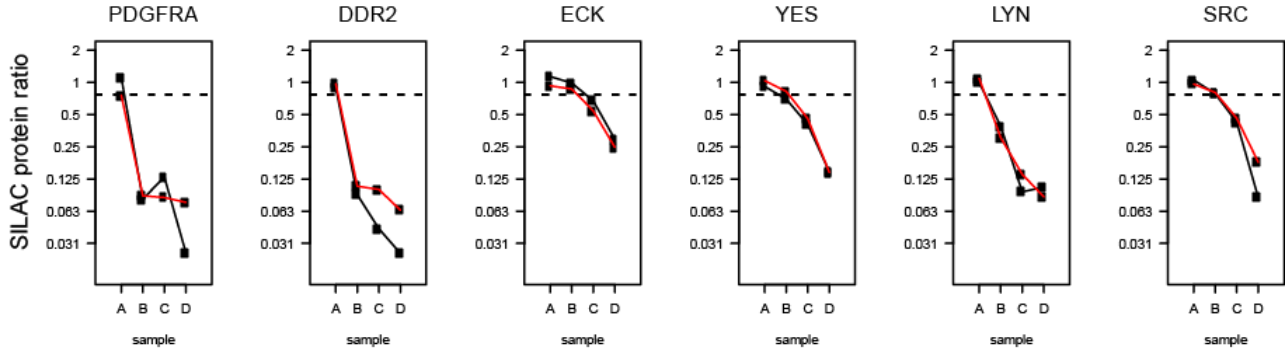


Supplementary figure S5

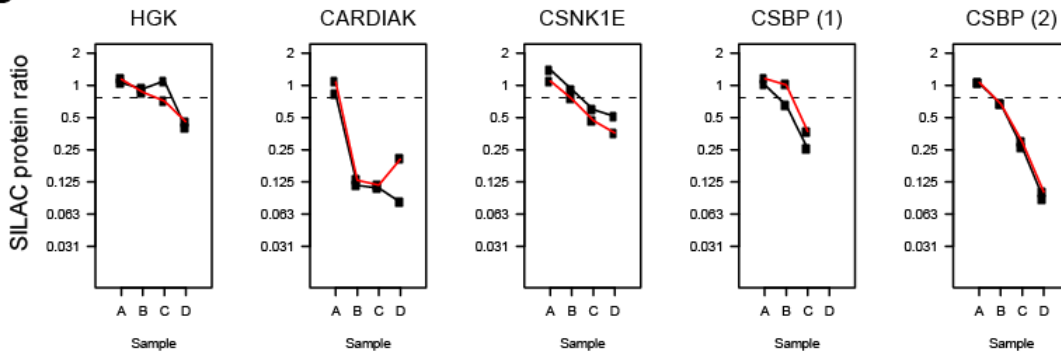


Supplementary Figure S6

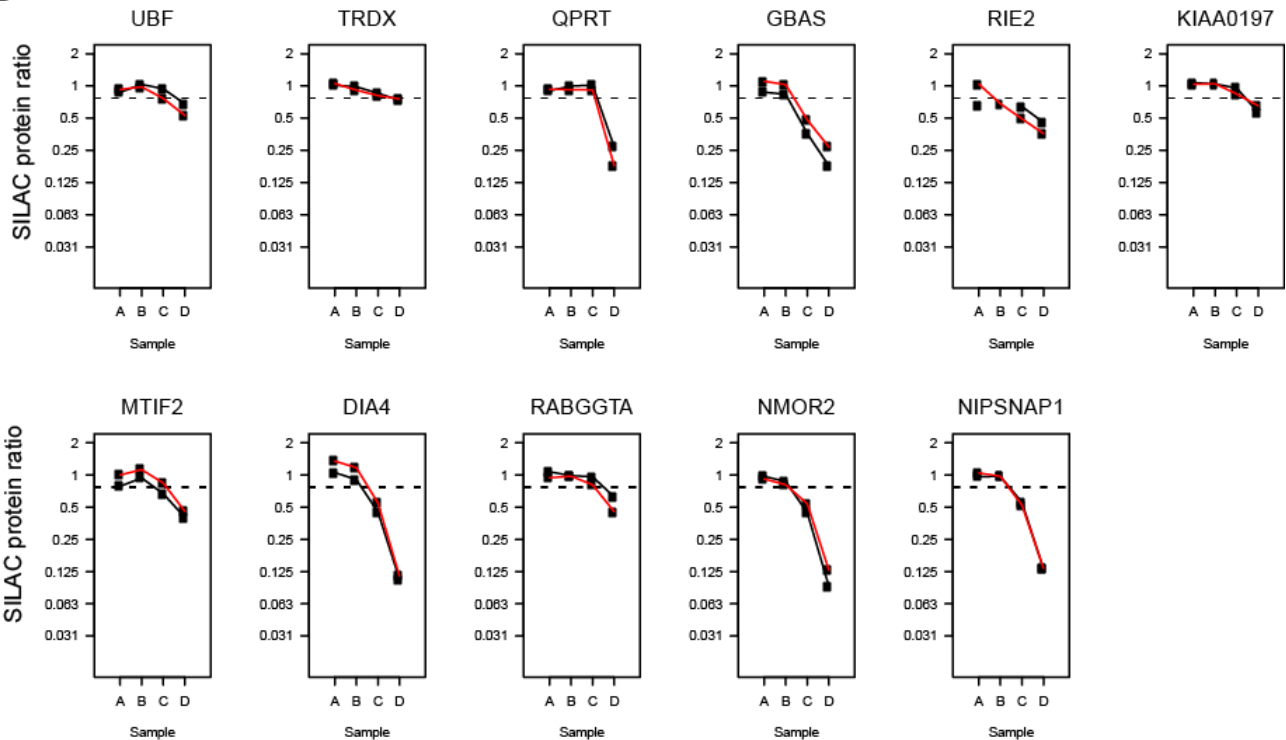
A



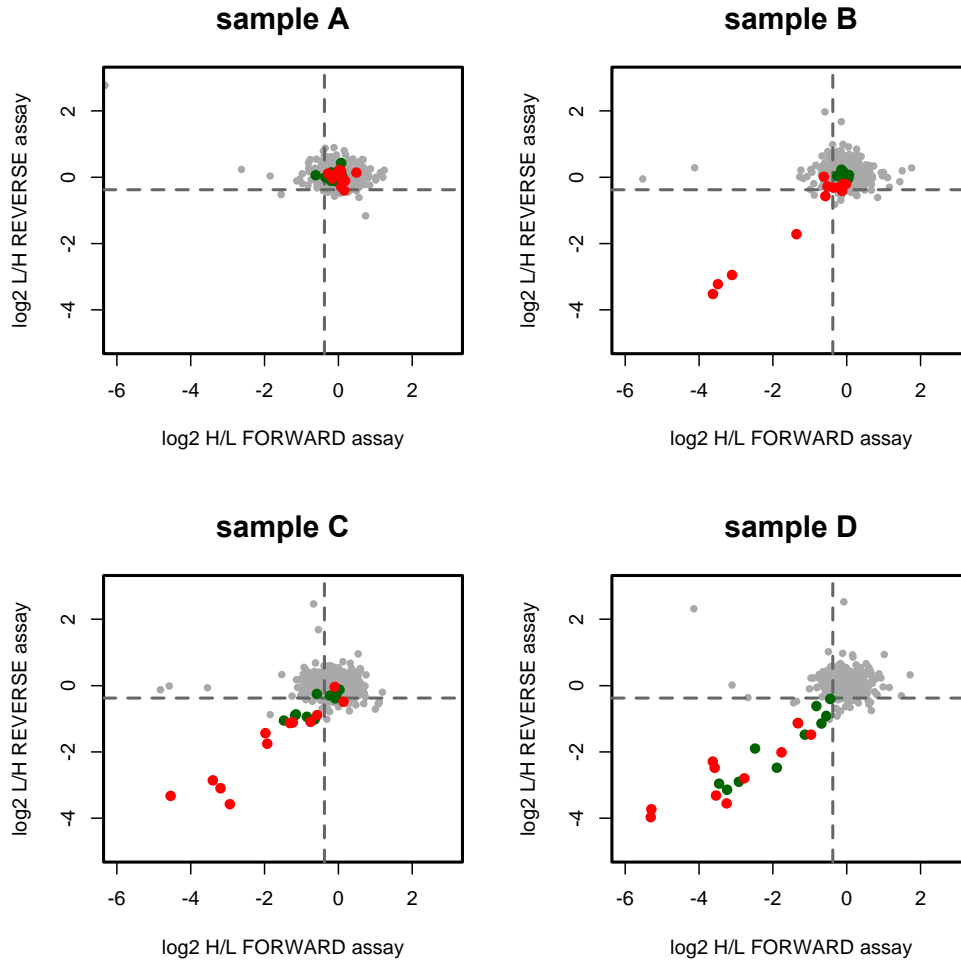
B



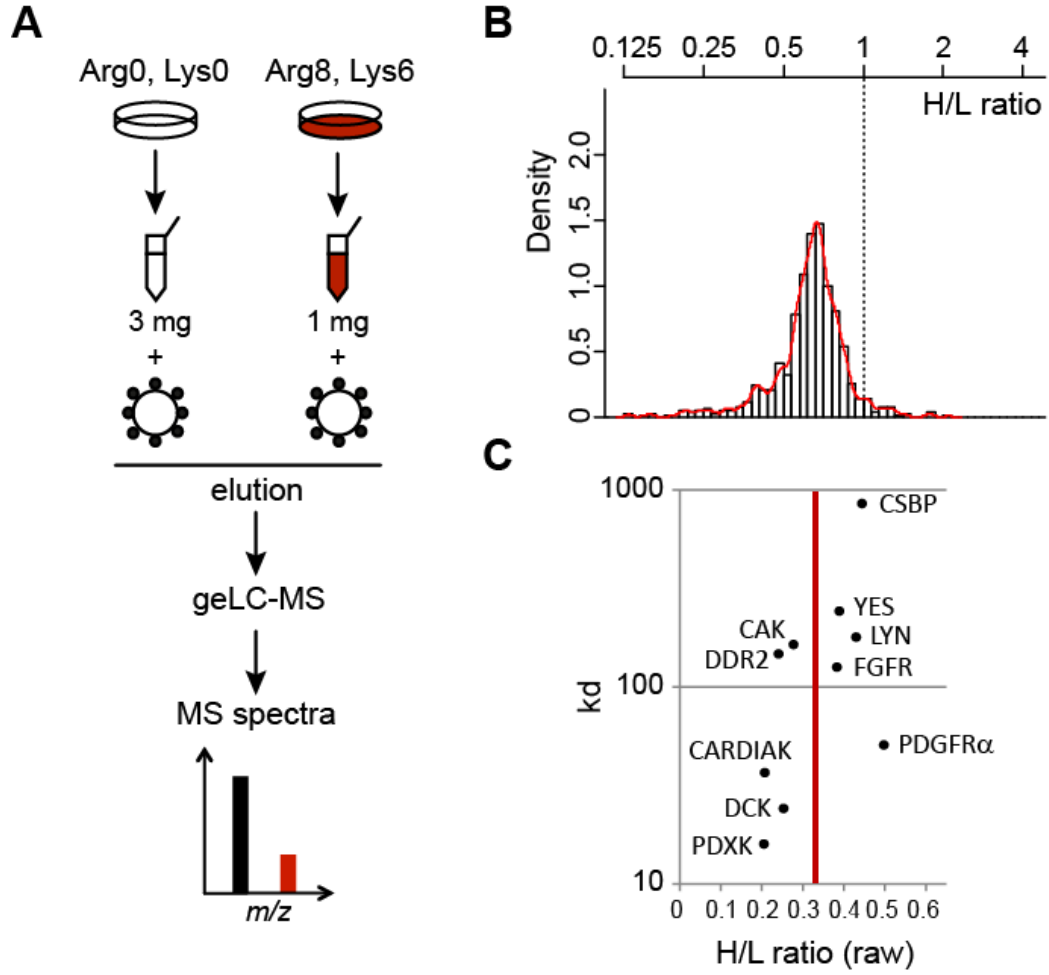
C



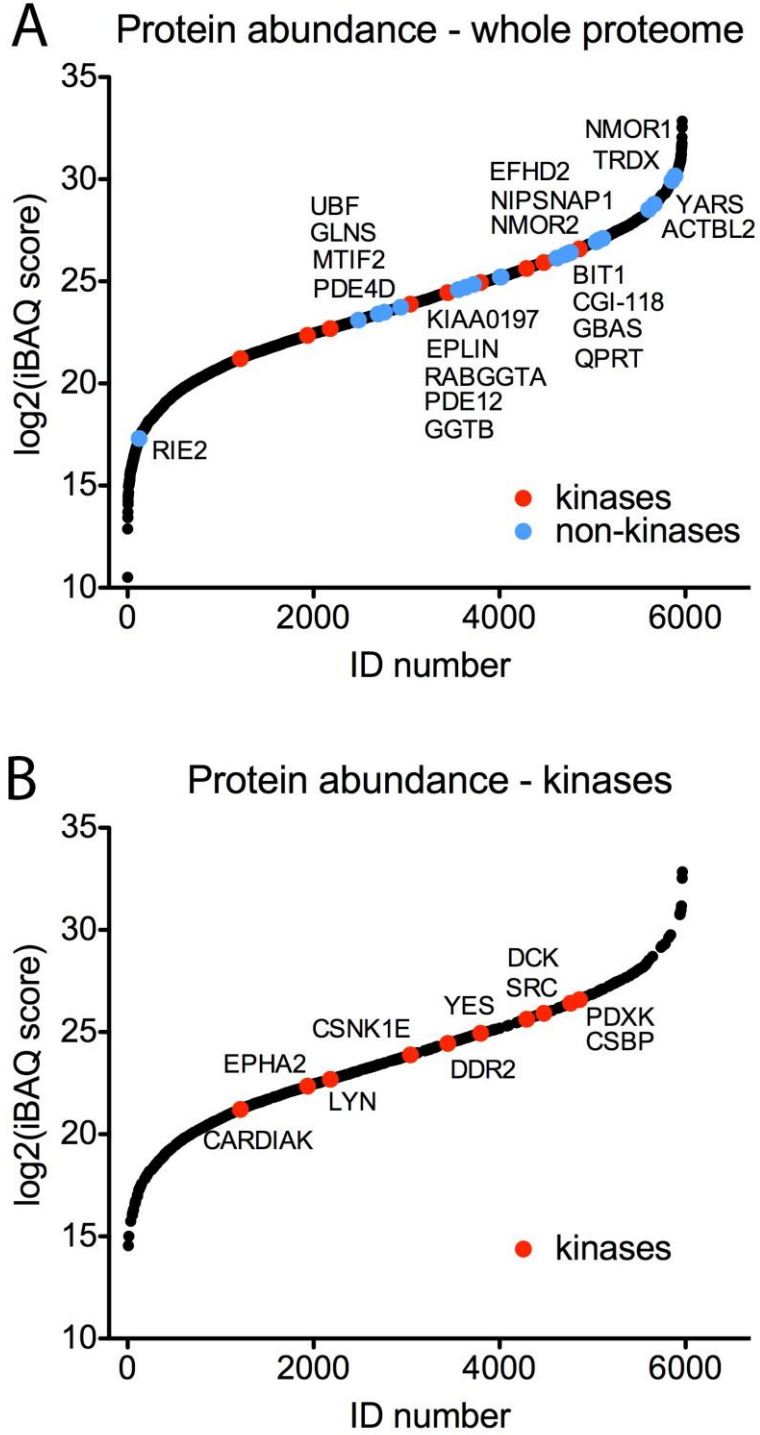
Supplementary Figure S7



Supplementary Figure S8



Supplementary Figure S9



Supplementary Figure S10

Fragmentation spectra pages 11-12

Supplementary Figure S11

Fragmentation spectra pages 13-15

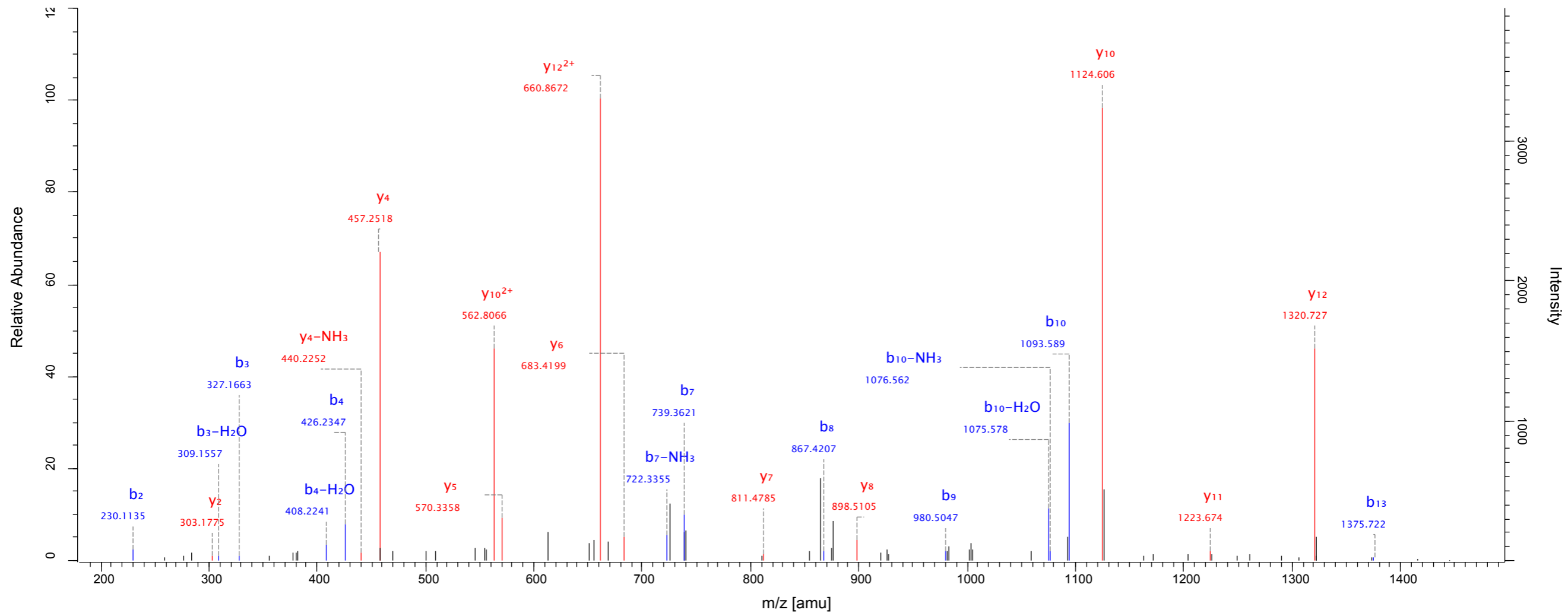
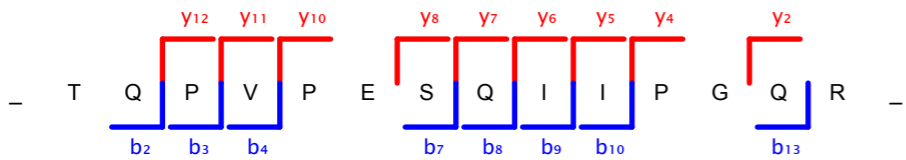
MS/MS spectrum

Source: F110425_MC_e3810_silac2_B05

Protein: LYN

Peptide Score: 134.04

Method: ITMS; CID; 2



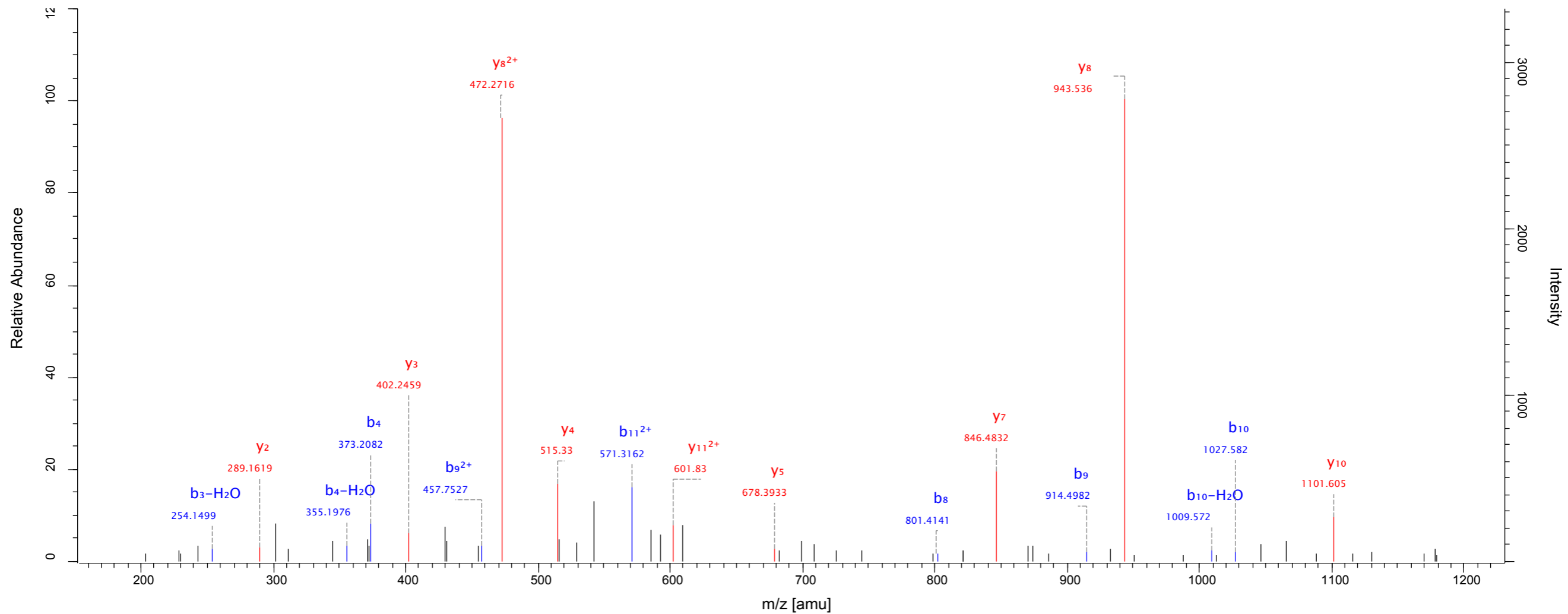
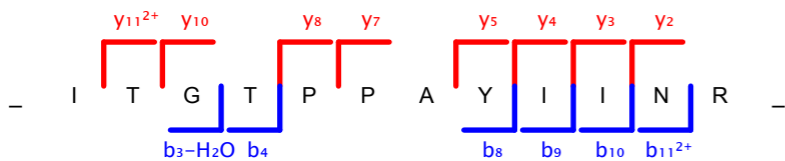
MS/MS spectrum

Source: F110530_MC_E3810_A2780_REV_A05

Protein: CSBP

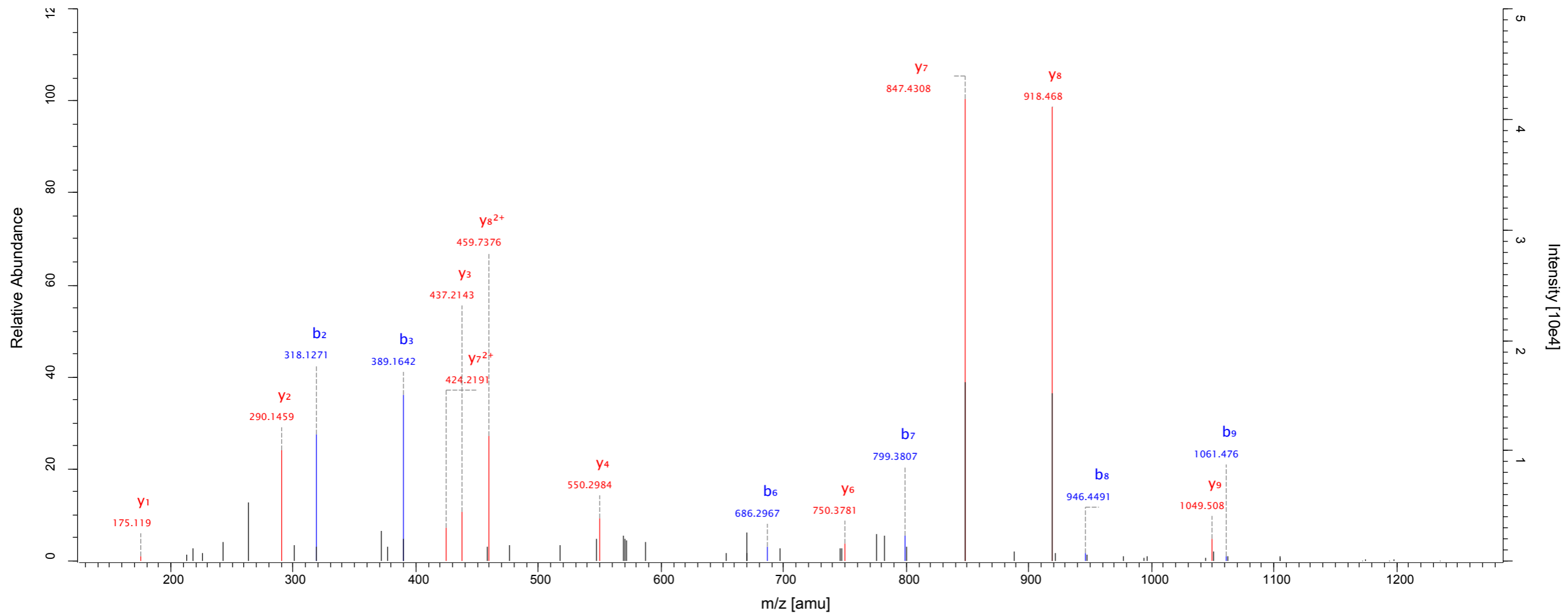
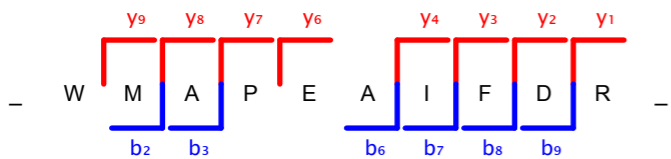
Peptide Score: 106.62

Method: ITMS; CID; 2



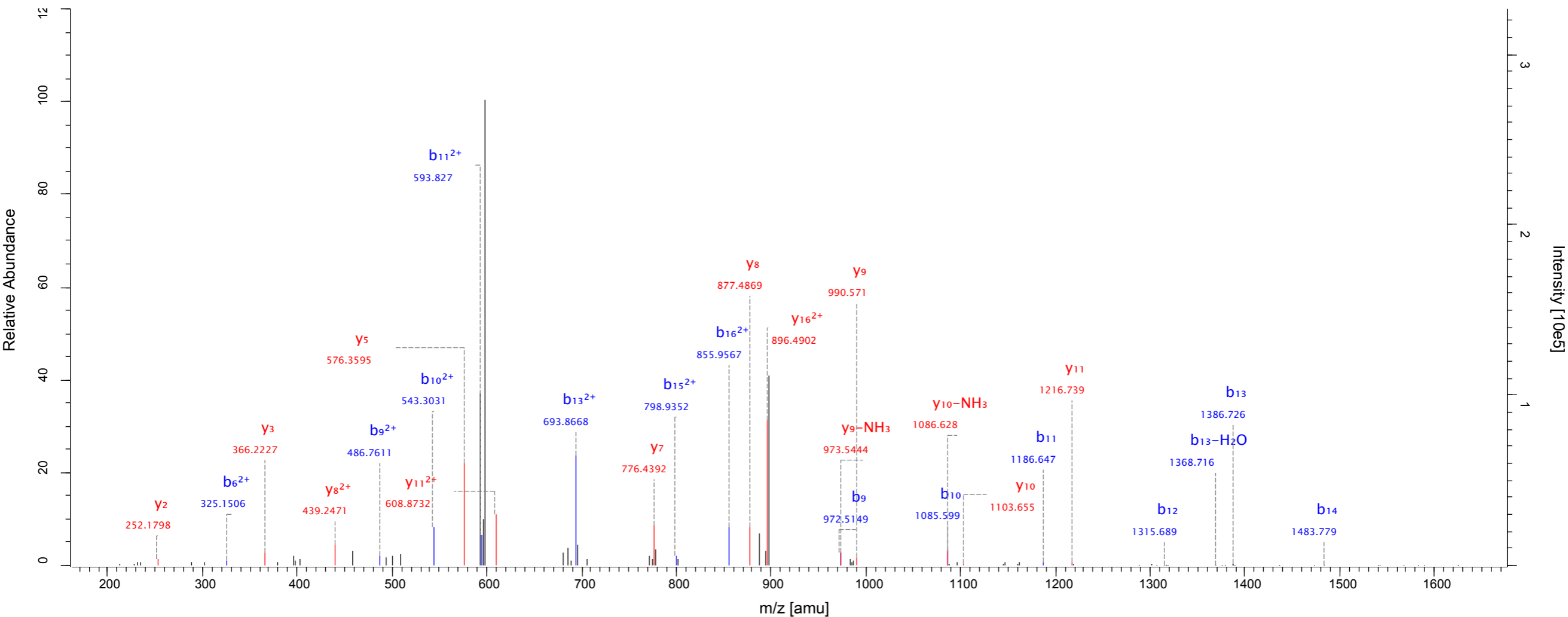
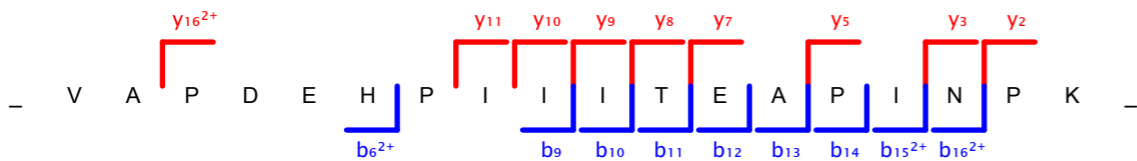
MS/MS spectrum

Source: F120118_MC_A2780_DIR3
Protein: FGFR2
Peptide Score: 111.61
Method: ITMS; CID; 3



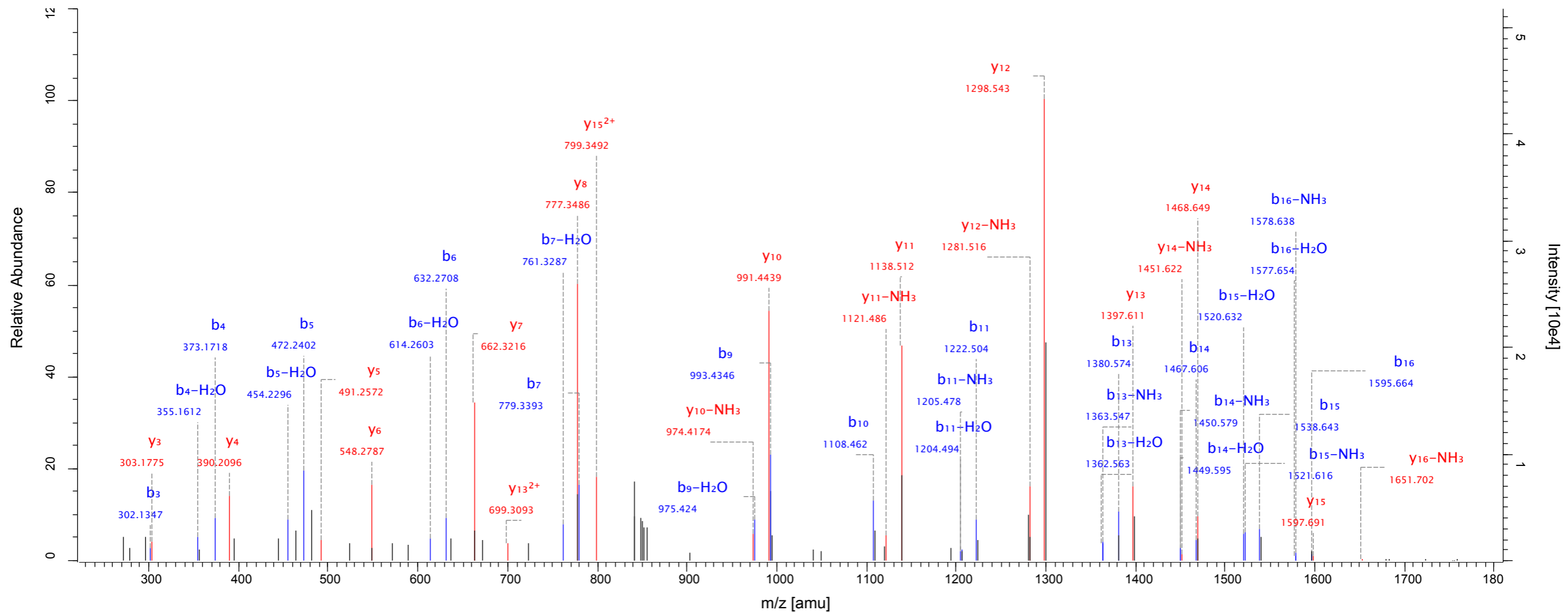
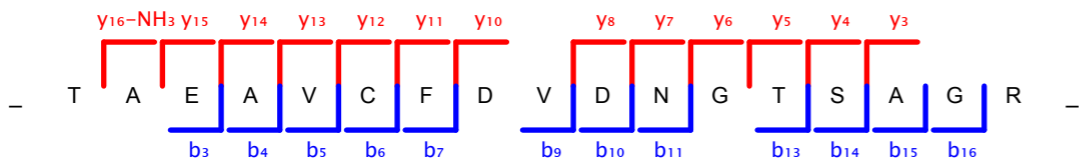
MS/MS spectrum

Source: F120118_MC_A2780_REV7
Protein: ACTBL2
Peptide Score: 147.35
Method: ITMS; CID; 3

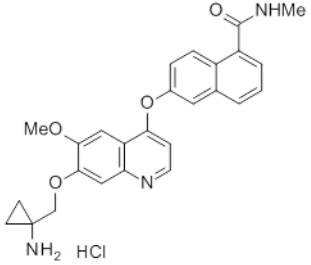
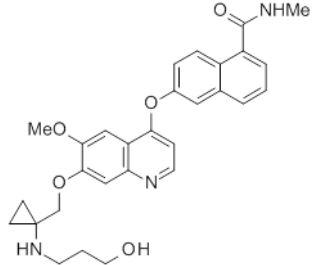


MS/MS spectrum

Source: F120118_MC_A2780_DIR4
 Protein: DPDE3
 Peptide Score: 321.81
 Method: ITMS; CID; 3



Supplemental Table S1

Kinase	IC ₅₀	
	E-3810 (compound 1)	Compound 4
		
c-KIT	437	526
FGFR-1	29	40
FGFR-2	77	130
FGFR-3	58	84
VEGFR-1	27	48
VEGFR-2	11	13
VEGFR-3	n. a.	n. a.

Supplementary Table S2

Gene Name	Uniprot ID	Protein Name	Cluster Forward Experiment	Cluster Reverse Experiment
PDGFRA	P16234-1	Platelet-derived growth factor receptor alpha	1	1
CARDIAK	O43353-1	Receptor-interacting serine/threonine-protein kinase 2	1	1
DDR2	Q16832	Discoidin domain-containing receptor 2	1	1
LYN	Q6NUK7	LYN protein	1	1
CSBP (2)	Q16539-1	Cytokine suppressive anti-inflammatory drug-binding protein	2	2
YES	P07947	Tyrosine protein kinase Yes	2	2
SRC	P12931-2	Proto-oncogene tyrosine-protein kinase Src	2	2
EPHA2	P29317	Ephrin type-A receptor 2	2	2
NMOR1	P15559	NAD(P)H dehydrogenase [quinone] 1	2	2
NMOR2	P16083	NAD(P)H dehydrogenase [quinone] 2	2	2
GBAS	O75323	Protein NipSnap homolog 2	2	2
NIPSNAP1	Q9BPW8	Protein NipSnap homolog 1	2	2
RIE2	B3KWY9	Highly similar to RING finger protein 10	n/a	2
CSNK1E	B3KRV2	Casein kinase I isoform epsilon	3	2
MAP4K4	O95819-3	HPK/GCK-like kinase HGK	3	3
UBF	P17480-1	Nucleolar transcription factor 1	3	3
TRDX	P10599	Thioredoxin	3	3
QPRT	Q15274	Nicotinate-nucleotide pyrophosphorylase [carboxylating]	3	3
KIAA0197	Q12769-1	160 kDa nucleoporin	3	3
MTIF2	P46199	Translation initiation factor IF-2, mitochondrial	3	3
RABGGTA	Q92696	Geranylgeranyl transferase type II subunit alpha	3	3
CSBP (1)	Q16539-2	Cytokine suppressive anti-inflammatory drug-binding protein	n/a	n/a