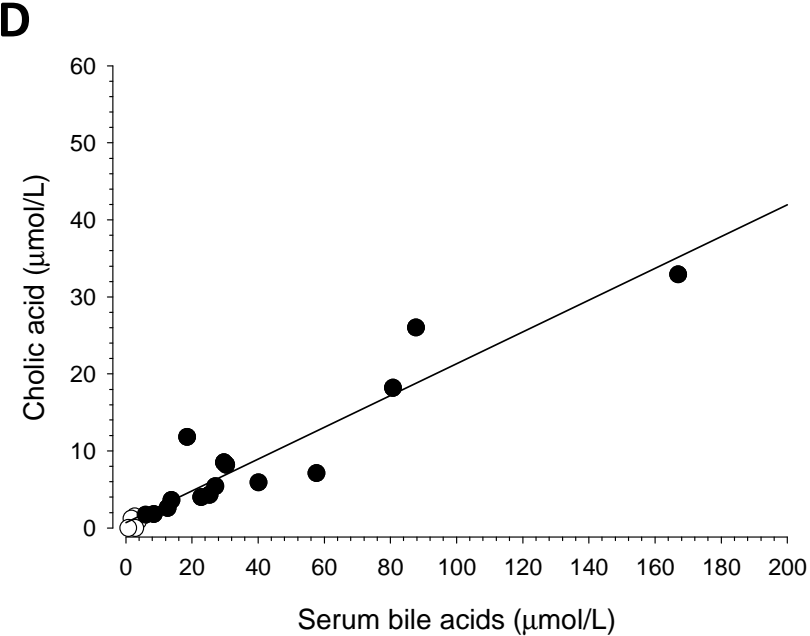
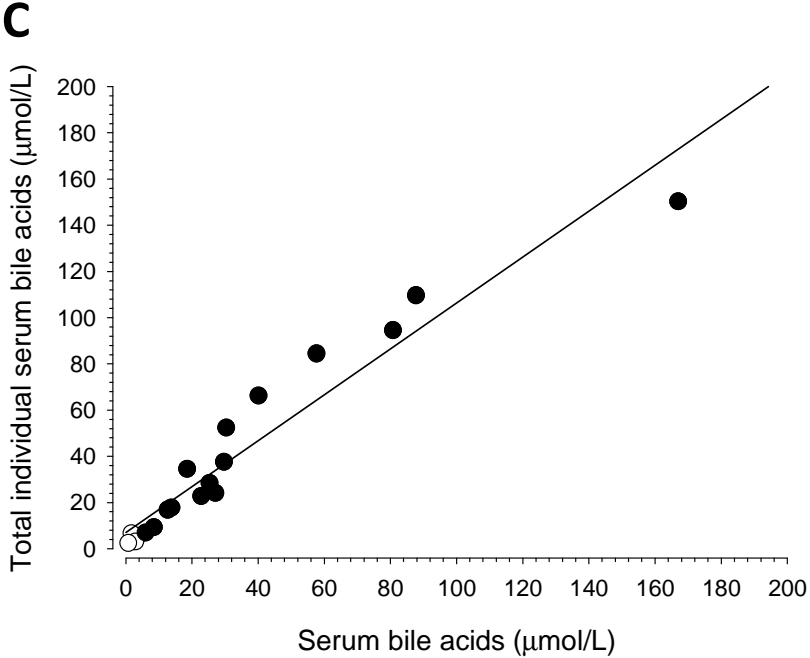
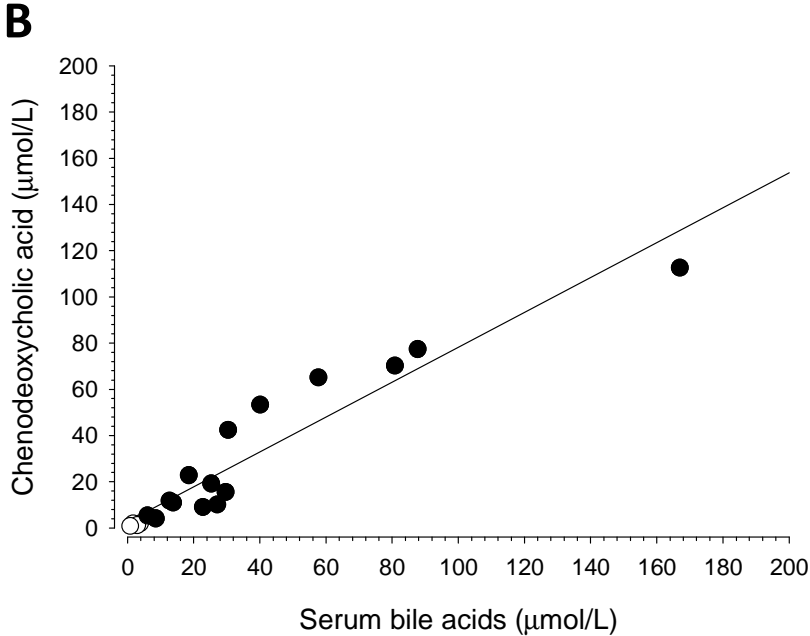
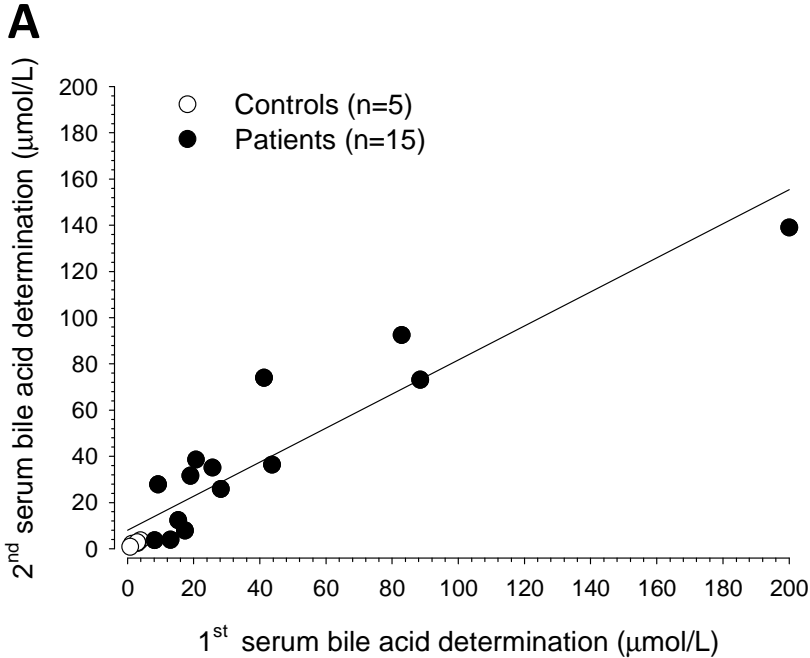
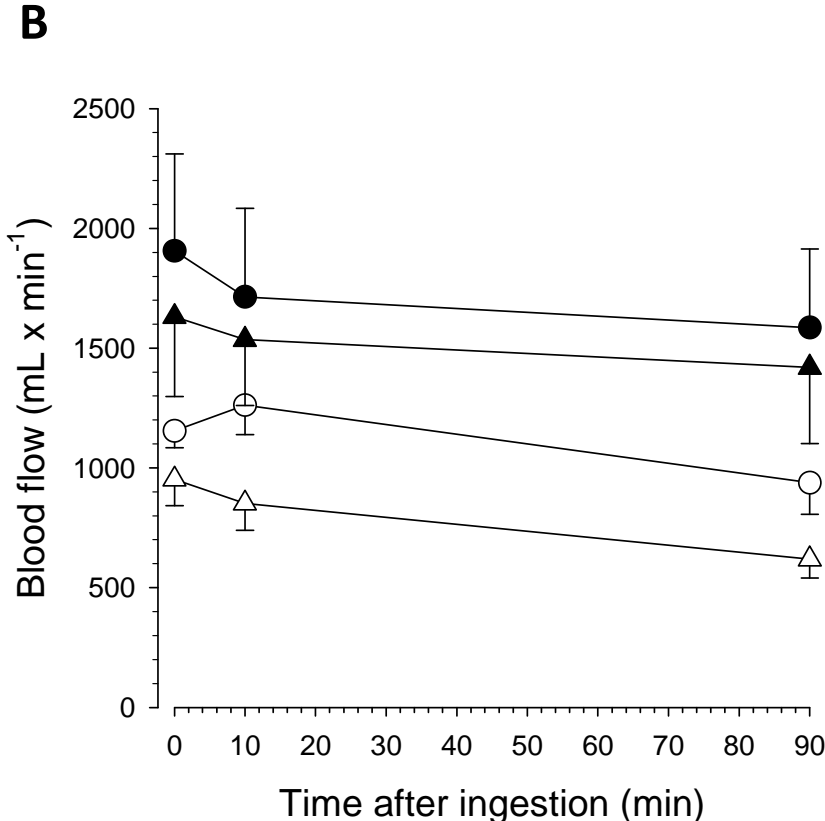
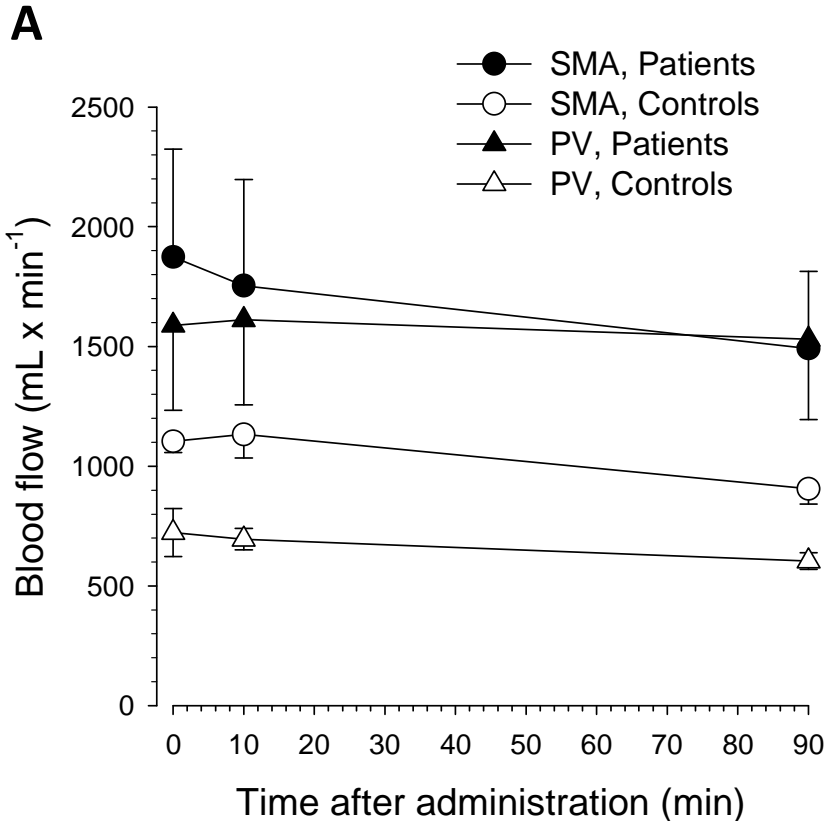


Suppl Fig. 1

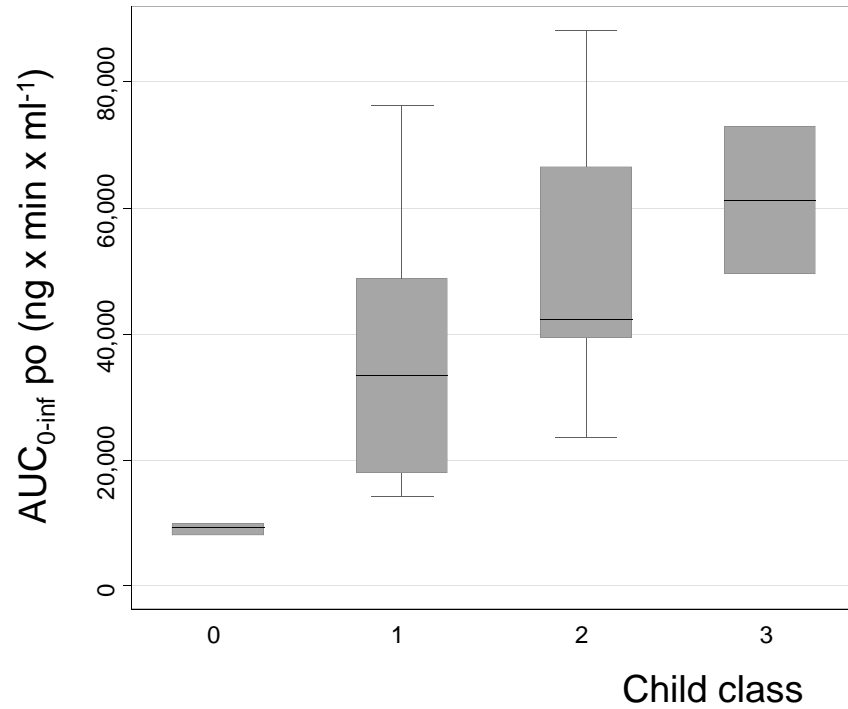


Suppl Fig. 2



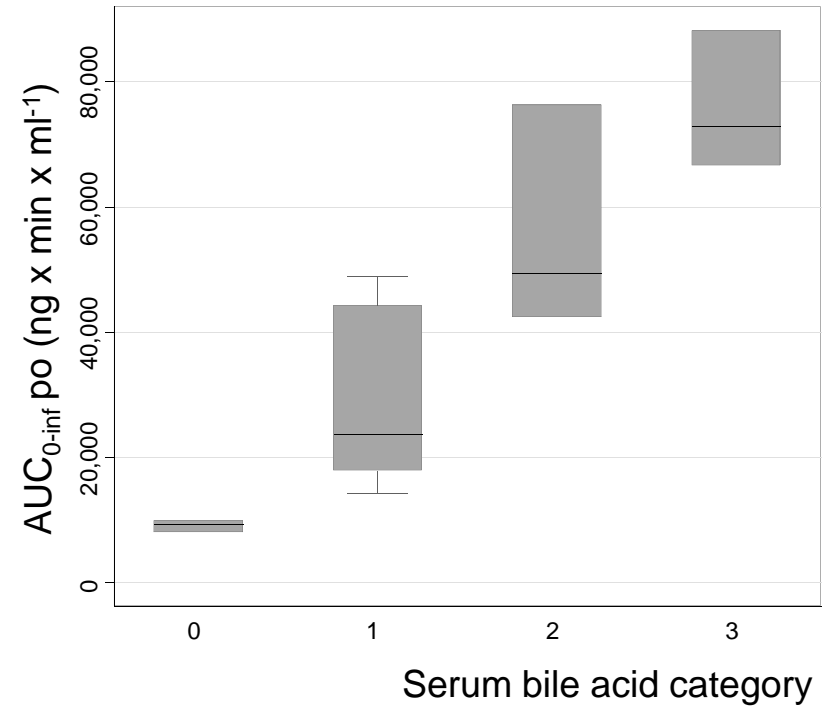
Suppl Fig. 3

**A**



0 = healthy controls (n = 5)  
1 = Class A (n = 6)  
2 = Class B (n = 5)  
3 = Class C (n = 2)

**B**



0 = < 6  $\mu\text{mol/l}$  (n = 5 controls)  
1 = 6.1 – 20  $\mu\text{mol/l}$  (n = 5 patients)  
2 = > 20 - 40  $\mu\text{mol/l}$  (n = 4 patients)  
3 = > 40  $\mu\text{mol/l}$  (n = 4 patients)