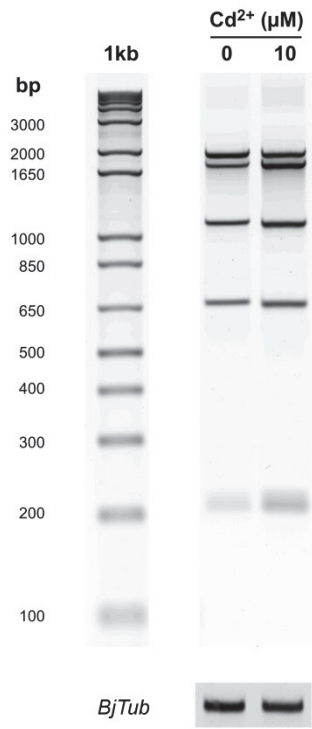
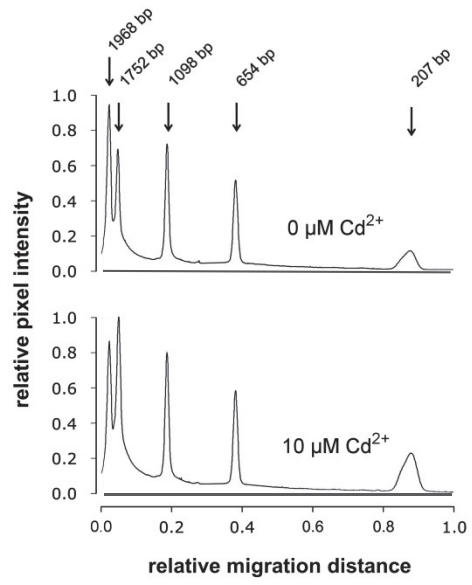


Additional file 10 RT-PCR analyses of the three *BjSultr1;2* forms in the roots of *Brassica juncea* exposed to 10 μM Cd. Plants were exposed or not to 10 μM Cd²⁺ for 48 h. (A) The entire ORFs of the three *BjSultr1;2* forms were amplified and PCR products were digested with ClaI endonuclease, electrophoresed on agarose gel, and finally stained with SYBR Green I. cDNA loading was normalized using *BjTub* as an internal control. Signals were detected using a laser scanner with 532 nm laser and 526 nm filter. A representative set of data from three independent experiments is given. (B) Densitometric analysis. Arrows indicate the relative position of each electrophoretic band obtained after digestion of PCR products with ClaI. (C) Statistical analysis. Bars and error bars are means and SE of three independent experiments run in triplicate ($n = 9$). Asterisks indicate significant differences between control and treated plants ($P \leq 0.001$).

A**B****C**