

Supporting Information

Zhu et al. 10.1073/pnas.1323011111

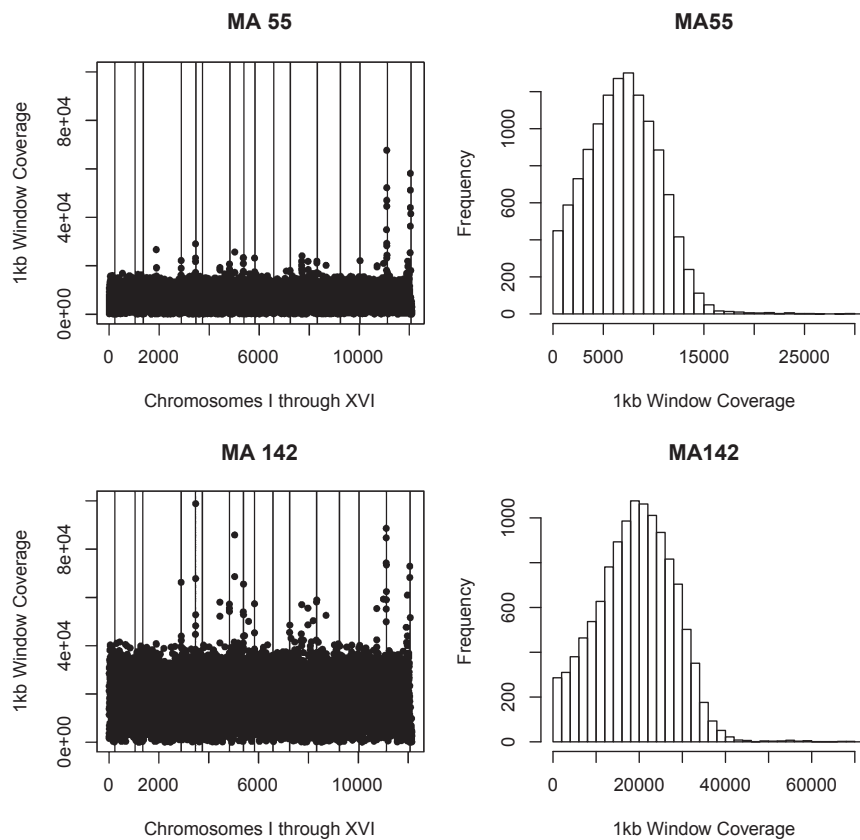


Fig. S1. Whole-genome coverage (1-kb windows) of two MA strains without aneuploidy.

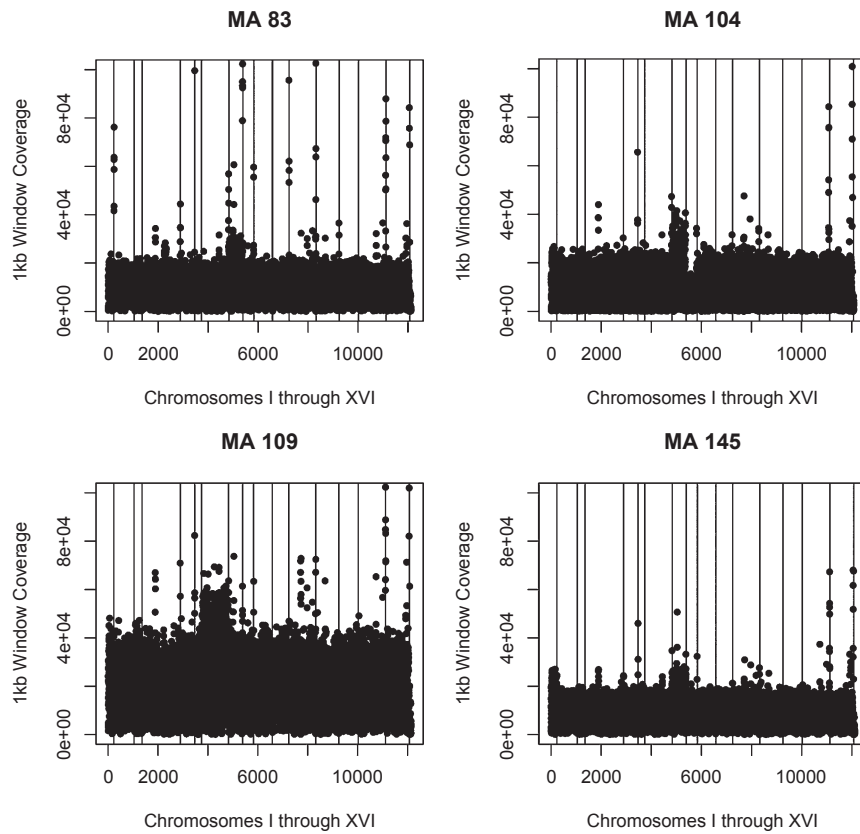


Fig. S2. Whole-genome coverage (1-kb windows) of four MA strains with aneuploidy.

Other Supporting Information Files

[Dataset S1 \(TXT\)](#)