

SUPPLEMENTARY FIGURES

Supplementary Figure 1 – Hierarchical clustering of miRNA profiles in the human cases

CNT= Control, MSA = Multiple System Atrophy, DLB = Dementia with Lewy Bodies, AD = Alzheimer's Disease, PSP = Progressive supranuclear palsy and CBD = Corticobasal degeneration.

Supplementary Figure 2 – Representative immunoblot image of SLC6A6

Full-length immunoblot with Santa Cruz antibody against SLC6A6 showing the complete banding pattern observed. For the purposes of this paper the 49kDa band was analyzed. Comparable results were observed with the Millipore SIC6A6 antibody.

SUPPLEMENTARY TABLES

Supplementary Table 1 – Demographic data of human cases used.

MSA = Multiple System Atrophy, DLB = Dementia with Lewy Bodies, AD = Alzheimer's Disease, PSP = Progressive supranuclear palsy and CBD = Corticobasal degeneration.
PMI = Post-mortem interval

Supplementary Table 2 – Details of the transgenic mouse models used.

MSA = Multiple System Atrophy, DLB = Dementia with Lewy Bodies, PD = Parkinson's disease, AD = Alzheimer's Disease.

Supplementary Table 3 – qPCR primer sequences for miRNA machinery analysis in mice and humans.

Supplementary Table 4 – qPCR primer sequences for SLC1A1 and SLC6A6 analysis in mice and humans.

Supplementary Table 5 – Detailed results of miRNA profiles in human cases compared to control

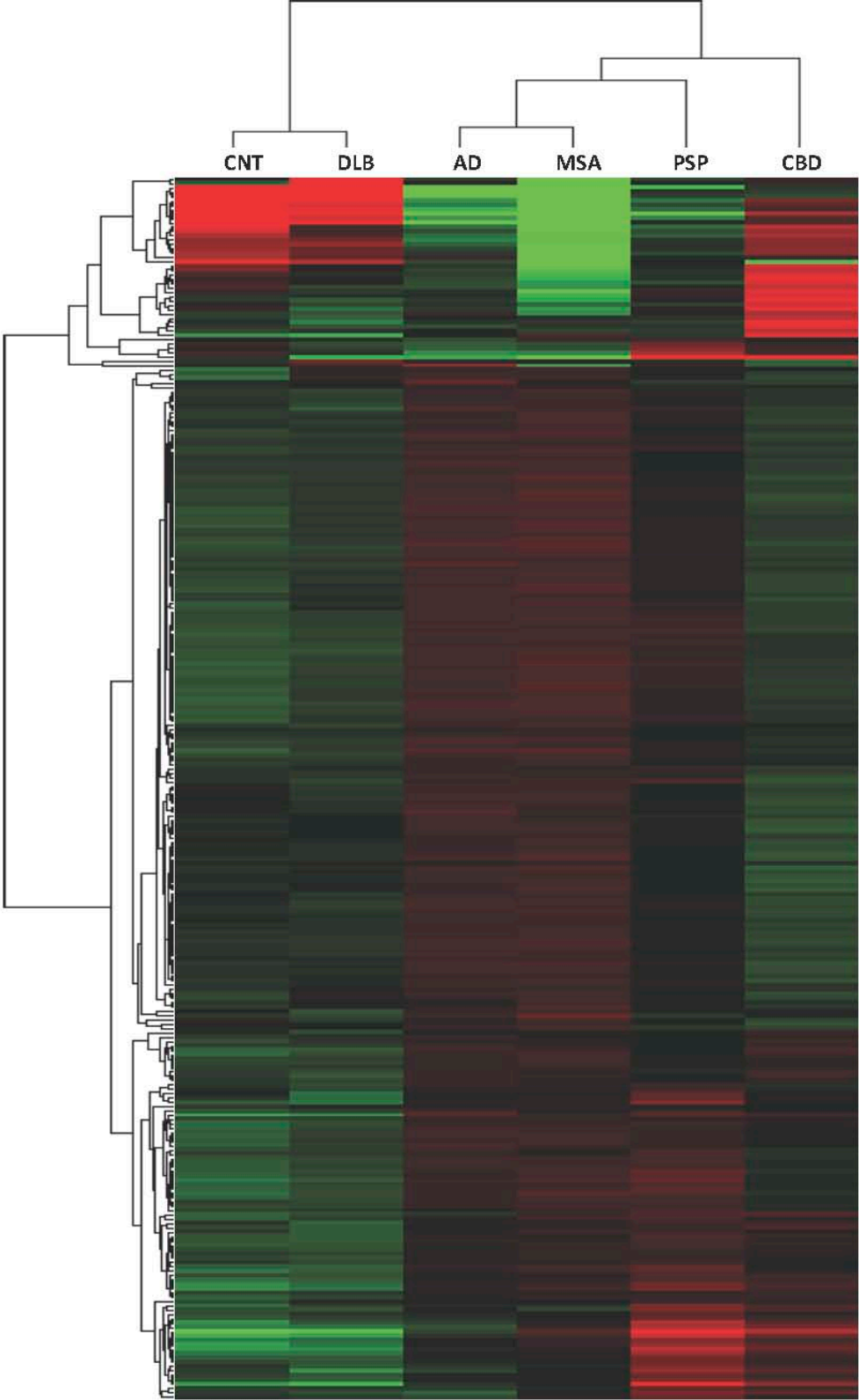
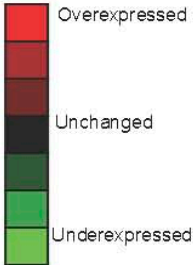
MSA = Multiple System Atrophy, DLB = Dementia with Lewy Bodies, PD = Parkinson's disease, AD = Alzheimer's Disease. Changes that met our selection criteria of ± 2 -fold regulation and $p < 0.05$ are in bold and italicized * indicates $p < 0.05$, ** indicates $p < 0.01$, calculated based on a Student's t-test of the replicate $2^{(-\Delta Ct)}$ values for each miRNA.

Supplementary Table 6 – Detailed results of miRNA profiles in transgenic mouse models compared to non tg mice.

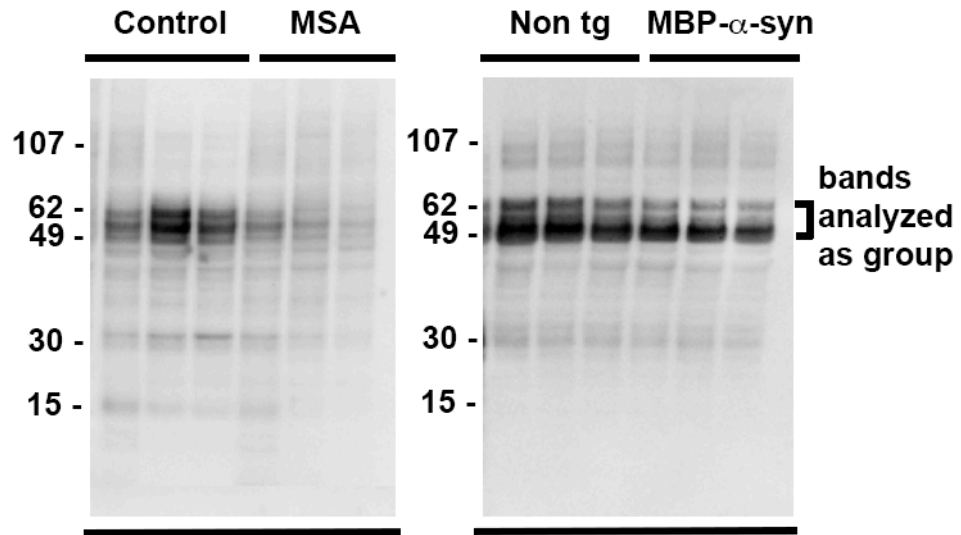
Changes that met our selection criteria of ± 2 -fold regulation and $p < 0.05$ are in bold and italicized * indicates $p < 0.05$, ** indicates $p < 0.01$ calculated based on a Student's t-test of the replicate $2^{(-\Delta Ct)}$ values for each miRNA.

Supplementary Figure 1 – Hierarchical clustering of miRNA profiles in the human

cases



Supplementary Figure 2 – Representative immunoblot image of SLC6A6



Supplementary Table 1 – Demographic data of human cases used

Diagnosis	N	AGE	SEX	PMI
CONTROL	4	70.5 yrs \pm 7.9	2F, 2M	7.75 hrs \pm 3.6
MSA	3	63.25 yrs \pm 4.0	1F, 2M	9.5 hrs \pm 3.9
AD	3	82.3 yrs \pm 9.2	2F, 1M	6.75 hrs \pm 4.6
DLB	3	73.5 yrs \pm 6.9	3F	8.63 hrs \pm 4.5
CBD	3	69.5 yrs \pm 5.2	2F, 1M	6.72 hrs \pm 4.7
PSP	3	65.5 yrs \pm 6.7	1F, 2M	7.68 hrs \pm 4.8

Supplementary Table 2 – Details of the transgenic mouse models used.

Model	Disease	Details	Reference
MBP1-hasyn tg	MSA	Transgenic (tg) mice expressing human (h) alpha-synuclein (hasyn) under the control of the oligodendrocyte-specific Myelin Basic Protein(MBP) promoter express high levels of hasyn and display severe neurological alterations and die prematurely at 6 months of age. Furthermore, mice developed progressive accumulation of hasyn-immunoreactive inclusions in oligodendrocytes along the axonal tracts in the brainstem, basal ganglia, cerebellum, corpus callosum, and neocortex. The inclusions reacted with antibodies against phospho-serine (129) hasyn and ubiquitin, and hasyn was found in the detergent-insoluble fraction.	J Neurosci. 2005 Nov 16;25(46):10689-99. Shults CW, Rockenstein E, Crews L, Adame A, Mante M, Larrea G, Hashimoto M, Song D, Iwatsubo T, Tsuboi K, Masliah E.
MBP29-hasyn tg	MSA	Tg mice expressing hasyn under the control of the oligodendrocyte-specific MBP promoter - HIGH EXPRESSER. In addition to the features observed in the the MBP1 line, in the high-expresser MBP29 line the white matter tracts displayed intense astrogliosis, myelin pallor, and decreased neurofilament immunostaining.	J Neurosci. 2005 Nov 16;25(46):10689-99. Shults CW, Rockenstein E, Crews L, Adame A, Mante M, Larrea G, Hashimoto M, Song D, Iwatsubo T, Tsuboi K, Masliah E.
mThy1-hasyn tg	DLB/PD	Tg mice expressing hasyn under the control of the mThy1.2 promoter. In these mice, hasyn accumulated in synapses and neurons throughout the brain, including the thalamus, basal ganglia, substantia nigra, and brainstem	J Neurosci Res. 2002 Jun 1;68(5):568-78. Rockenstein E, Mallory M, Hashimoto M, Song D, Shults CW, Lang I, Masliah E.
mThy1-hAPP tg	AD	Tg mice expressing human APP751 cDNA containing the London (V717I) and Swedish (K670M/N671L) mutations under the regulatory control of the murine (m)Thy-1 gene. High levels of hAPP expression are found in neurons in layers 4-5 of the neocortex, hippocampal CA1 and olfactory bulb. As early as 3-4 months of age, line 41 mice developed mature plaques in the frontal cortex, whereas at 5-7 months plaque formation extended to the hippocampus, thalamus and olfactory region. Ultrastructural and double-immunolabeling analysis confirmed that most plaques were mature and contained dystrophic neurites immunoreactive with antibodies against APP, synaptophysin, neurofilament and tau.	J Neurosci Res. 2001 Nov 15;66(4):573-82. Rockenstein E, Mallory M, Mante M, Sisk A, Masliah E.
mThy1-htau	Tauopathy	These tg mice over-express TAU441 bearing the missense mutations V337M and R406W under the control of the brain specific murine Thy-1 promoter. This human mutated TAU isoform is expressed in high levels and the TAU pathology is visible in early age, starting at 4 months. Severity of the brain pathology correlates with increasing age and behavioral deficits whereas no motor deficits occur.	Kindly donated by JSW Life Sciences GmbH, 8020 Graz, Austria.

Supplementary Table 3 -qPCR primer sequences for miRNA machinery analysis in mice and humans.

MOUSE	
Probe	Sequence 5'- 3'
mDROSHA Forward	GCA GCA ATG GAT GCA CTG GA
mDROSHA Reverse	TGA TGC TCT CTT TCC CAC CTC A
mDCGR8 Forward	ACG AAT ACA TGC AGC GTG TCC
mDCGR8 Reverse	GGA GGC ACC AAA AGG CTC AC
mExportin Forward	AGA AGA GCT CCC GGT TAG TGA TG
mExportin Reverse	CA GGA CGA GGG GAT CCT TG
mDicer1 Forward	GAG ACC AGG GTC CAC AAA ACG
mDicer1 Reverse	TAA CAA GGC TGG TCG GGT TTG
mAgo2 Forward	CAT GAC AGC GCT GAA GGA AG
mAgo2 Reverse	CAG TGT GTC CTG GTG GAC CT
mGAPDH Forward	GGT GAA GGT CGG TGT GAA CG
mGAPDH Reverse	AGG TCA ATG AAG GGG TCG TTG
HUMAN	
Probe	Sequence 5'- 3'
hDROSHA Forward	TGT TTA CTT GGA GGG AAG CCT GGA
hDROSHA Reverse	TGG GTG GAG AGG ATA ATT GAG CCA
hDCGR8 Forward	GGG CGC CTC AGG TAG AAG AAG AA
hDCGR8 Reverse	ACT CAG CTT AAG TGA CTG GCG A
hExportin Forward	CCC TGC ACA GAG CAG ATT CTG AAA
hExportin Reverse	TCA AGC ATA TCC AGA GCC TTG GTG
hDicer1 Forward	TGA TGC CAG TTG GGA AAG AGA CTG
hDicer1 Reverse	TTT GGG TAG CAC TGC CTT CGT TTC
hAgo2 Forward	ATC GAG ATC AAG GTG TGG GCC AT
hAgo2 Reverse	CTT TCT GAG CTG CTC TGT GAA GGA C
hGAPDH Forward	AAG ATC ATC AGC AAT GCC TCC TGC
hGAPDH Reverse	ATG GAC TGT GGT CAT GAG TCC TTC

Supplementary Table 4 – qPCR primer sequences for SLC1A1 and SLC6A6 analysis in mice and humans

MOUSE	
Probe	Sequence 5'- 3'
mSLC1A1 Forward	TGG TGA CCA TGG TGA TCG TG
mSLC1A1 Reverse	GGT CCA GGA GCC AGT CAA CA
mSLC6A6 Forward	AAG GGG CCA CAC CCT TTC AC
mSLC6A6 Reverse	TCA TGG TCT CCA CAA TGA CGT G
mGAPDH Forward	GGT GAA GGT CGG TGT GAA CG
mGAPDH Reverse	AGG TCA ATG AAG GGG TCG TTG
HUMAN	
Probe	Sequence 5'- 3'
hSLC1A1 Forward	ATC ACC ATC AGT ATC ACG GCC ACA
hSLC1A1 Reverse	TCG ACA GCA ATG ATC AGG GTG ACA
hSLC6A6 Forward	AGA ATG GTG GAG GTG CGT TTC TC
hSLC6A6 Reverse	AGG GAC ACA ATT ACA ACG GAG GC
hGAPDH Forward	AAG ATC ATC AGC AAT GCC TCC TGC
hGAPDH Reverse	ATG GAC TGT GGT CAT GAG TCC TTC

Supplementary Table 5 – Detailed results of miRNA profiles in human cases compared to control

Mature ID	Fold Regulation (compared to Control)				
	MSA	DLB	AD	PSP	CBD
hsa-let-7a	-0.2247	1.0027	-0.4181	-0.4163	-0.7304
hsa-let-7b	-0.5048	-0.8244	-0.9111	-0.9113	1.5763
hsa-let-7c	-0.2813	1.0561	-0.4961	-0.5336	-0.7554
hsa-let-7d	-0.2621	-0.9342	-0.3535	-0.4117	-0.5923
hsa-let-7d*	1.6141	1.0909	1.4015	1.2139	1.0566
hsa-let-7e	-0.4227	1.1425	-0.7248	-0.7886	1.1014
hsa-let-7f	-0.1122	-0.8902	-0.1586	-0.1774	-0.2434
hsa-let-7g	-0.2172	-0.8275	-0.2755	-0.3164	-0.412
hsa-let-7i	-0.3197	-0.6936	-0.4234	-0.4258	-0.6027
hsa-miR-1	-0.5155	-0.7204	-0.4352	-0.3624	-0.3563
hsa-miR-100	-0.6244	-0.836	-0.7428	-0.7527	-0.8301
hsa-miR-101	1.4978	1.0822	1.2357	-0.9847	-0.7047
hsa-miR-101*	2.6738**	1.3302	2.2406**	1.7438	1.2143
hsa-miR-103	-0.7738	-0.8537	1.0384	1.0025	1.8234
hsa-miR-103-2*	2.5779**	1.1972	2.2061**	1.6777	1.2339
hsa-miR-106a	-0.8053	-0.8493	-0.8265	-0.7448	-0.8863
hsa-miR-106a*	2.6844**	1.2266	2.2746*	1.9078	1.335
hsa-miR-106b	1.1244	-0.8839	1.0902	-0.8837	1.0477
hsa-miR-107	-0.8968	-0.977	1.0879	1.1013	2.152
hsa-miR-1180	1.8271	1.222	1.6005	1.2865	-0.9134
hsa-miR-1181	2.4268**	1.1829	2.049*	1.5076	1.0705
hsa-miR-1182	1.7525	1.064	1.4042	1.8388	1.3611
hsa-miR-1183	1.0242	-0.9593	1.1457	-0.9187	1.0646
hsa-miR-1185	2.0742**	1.2069	1.874	1.3547	1.0798
hsa-miR-1193	1.9163	-0.9519	1.5951	1.3959	1.4023
hsa-miR-1201	2.5505**	1.2355	2.1912**	1.6825	1.2741
hsa-miR-1202	2.468**	1.1758	2.1249**	1.8206	1.2557
hsa-miR-1203	2.1228*	1.0359	1.8852	1.7445	1.2117
hsa-miR-1207-5p	-0.3587	1.2186	-0.32	-0.5551	-0.4556
hsa-miR-122*	2.765**	1.2616	2.364**	1.8004	1.263
hsa-miR-1224-3p	2.2977**	1.2246	2.2564**	2.0222 *	1.4694
hsa-miR-1224-5p	1.9138	1.0605	1.6324	1.7196	1.676
hsa-miR-1225-3p	1.8331	1.0449	1.5233	1.2133	-0.9049
hsa-miR-1225-5p	3.0985**	1.2113	3.1233**	2.834**	2.2802
hsa-miR-1226*	2.5964**	1.2092	2.2202 *	1.8944	1.2566
hsa-miR-1228	2.455**	1.1442	2.0881 *	1.5833	1.1537
hsa-miR-1228*	4.9367*	1.2295	2.7329**	6.486**	4.3623
hsa-miR-1229	1.4844	1.011	1.2757	1.0059	-0.9341
hsa-miR-1231	2.7436*	1.1988	2.2554**	1.9148	1.3314
hsa-miR-1233	2.4242*	1.1267	1.8923	1.6374	1.176
hsa-miR-1234	1.7561	1.0208	1.5879	1.1377	-0.8845
hsa-miR-1236	2.7096**	1.2668	2.2671**	1.8106	1.2679
hsa-miR-1237	2.5322**	1.1837	2.1995**	1.6361	1.2199
hsa-miR-1238	2.5365**	1.2371	2.0775**	1.7046	1.1977
hsa-miR-124	1.0125	-0.8501	-0.9445	1.3114	1.6764
hsa-miR-124*	1.9937	1.2023	1.7417	1.3976	1.1971
hsa-miR-1243	1.9275	-0.9615	1.6903	1.3127	-0.9726
hsa-miR-1244	2.0133**	1.0192	1.7642	1.3483	-0.987
hsa-miR-1246	-0.1186	1.0941	-0.1291	-0.3152	-0.2642
hsa-miR-1247	2.6433**	1.1948	2.1981**	1.6598	1.1361
hsa-miR-1248	-0.4155	-0.7452	-0.432	-0.4665	-0.5505

Mature ID	Fold Regulation (compared to Control)				
	MSA	DLB	AD	PSP	CBD
hsa-miR-1249	1.8424	1.242	1.7804	1.5089	1.1539
hsa-miR-1250	2.3547**	1.0709	1.8887	1.5852	1.1881
hsa-miR-1253	2.2805**	1.273	1.8418	1.5108	1.18
hsa-miR-1255b	2.5295**	1.2228	2.1145**	1.7207	1.1802
hsa-miR-1258	-0.4867	-0.4912	-0.4322	-0.3071	-0.2302
hsa-miR-1259	1.9571	1.1162	1.6509	1.3005	-0.9199
hsa-miR-125a-3p	2.1788*	1.3442	1.8606	1.8986	1.5894
hsa-miR-125a-5p	-0.8684	1.0546	-0.9441	1.2404	1.2587
hsa-miR-125b	1.0249	-0.9365	1.2802	1.2378	1.2806
hsa-miR-125b-1*	-0.4731	-0.6203	-0.4398	-0.4896	-0.6081
hsa-miR-125b-2*	1.8007	1.2357	1.8408	1.4441	1.2681
hsa-miR-126	-0.5339	1.2864	-0.5924	-0.5921	-0.6724
hsa-miR-126*	1.0395	1.1014	1.0254	1.0964	-0.9305
hsa-miR-1260	-0.3131	-0.6558	-0.2997	-0.3005	-0.2641
hsa-miR-1260b	-0.1147	-0.6816	-0.1401	-0.1411	-0.1464
hsa-miR-1262	2.2844*	1.1471	2.0477**	1.5833	1.2003
hsa-miR-1268	-0.6874	-0.8801	-0.7354	-0.8457	-0.8797
hsa-miR-127-3p	-0.7182	1.0179	-0.8687	-0.6889	-0.6635
hsa-miR-127-5p	1.9171	1.2579	1.8883	1.4672	1.3484
hsa-miR-1270	2.6719**	1.2163	2.2158**	1.8614	1.3157
hsa-miR-1271	2.1472**	1.0297	1.8906	1.5213	1.1288
hsa-miR-1272	1.4587	1.1055	1.2511	1.0436	-0.7689
hsa-miR-1273	1.2736	1.0541	1.1779	-0.9408	-0.6799
hsa-miR-1273c	2.7954**	1.2573	2.3159**	1.8841	1.3198
hsa-miR-1273d	2.1953*	1.1167	1.8333	1.4715	1.0315
hsa-miR-1274a	-0.314	-0.5476	-0.4148	-0.3537	-0.2729
hsa-miR-1274b	-0.2398	-0.5111	-0.2953	-0.3432	-0.2168
hsa-miR-1275	2.3832	1.2411	1.745	2.3342**	1.7352
hsa-miR-128	-0.4252	-0.9827	-0.4058	-0.5344	-0.7045
hsa-miR-1280	-0.1029	-0.6683	-0.1426	-0.1161	-0.1245
hsa-miR-1281	1.8991	1.2572	2.2402	1.2937	1.1036
hsa-miR-1282	1.9225	1.0994	1.5743	1.256	-0.901
hsa-miR-1285	-0.7359	-0.9529	-0.6575	-0.6114	-0.5283
hsa-miR-1287	2.4923**	1.1825	2.0761*	1.6525	1.1746
hsa-miR-129*	-0.8563	-0.8064	-0.7908	-0.6831	1.1464
hsa-miR-129-3p	-0.8523	-0.7948	1.2022	-0.7285	1.0774
hsa-miR-129-5p	-0.6689	-0.766	-0.6693	-0.6314	-0.9399
hsa-miR-1290	-0.1382	-0.9549	-0.1308	-0.2861	-0.245
hsa-miR-1291	1.5539	1.0848	1.5001	1.3226	1.1575
hsa-miR-1292	2.7846**	1.3274	2.2341**	1.9699	1.2973
hsa-miR-1296	1.3213	1.1349	1.6285	1.5241	1.6039
hsa-miR-1298	2.5203**	1.1928	2.1866**	2.0506**	1.3417
hsa-miR-1299	2.2959**	1.1789	1.9443	1.5377	1.2006
hsa-miR-1301	1.8408	1.0136	1.6971	1.4337	2.4098
hsa-miR-1303	1.7712	1.1059	1.6187	1.3342	1.0617
hsa-miR-1306	2.2514**	1.1047	1.8918	1.5363	1.0818
hsa-miR-1307	-0.833	1.0335	1.1828	1.2469	1.3058
hsa-miR-1308	-0.1065	-0.731	-0.1851	-0.3415	-0.4113
hsa-miR-130a	-0.8446	1.2625	1.1772	-0.9721	1.1624
hsa-miR-130b	1.8344	1.1041	1.6027	1.4432	1.3818
hsa-miR-132	-0.5608	1.0272	-0.6574	-0.7944	1.1573
hsa-miR-132*	2.1275*	1.076	1.7253	1.3697	-0.9848
hsa-miR-1321	1.1561	-0.8926	-0.9535	1.2393	1.0002
hsa-miR-1322	2.2037**	1.2095	1.9648	1.4537	1.0105

Mature ID	Fold Regulation (compared to Control)				
	MSA	DLB	AD	PSP	CBD
hsa-miR-133a	1.8356	1.3032	1.6521	1.4009	1.8544
hsa-miR-133b	2.3601**	1.243	2.0096**	1.6311	1.7199
hsa-miR-134	1.0567	1.0371	-0.9406	-0.7213	-0.4518
hsa-miR-135a	1.1631	-0.9187	-0.997	-0.7772	-0.5292
hsa-miR-136	1.5126	1.1162	1.2913	-0.9727	-0.7524
hsa-miR-136*	2.1688*	1.2443	1.8944	1.4203	1.0289
hsa-miR-137	-0.6162	1.1356	-0.5345	-0.4356	-0.2994
hsa-miR-138	-0.6074	-0.7623	-0.8447	-0.8576	1.419
hsa-miR-138-1*	2.4561*	1.173	2.0118**	1.5807	1.1625
hsa-miR-138-2*	2.4327*	1.0788	1.9717	1.5317	1.3302
hsa-miR-139-3p	1.3318	1.2162	1.5235	1.2527	1.4335
hsa-miR-139-5p	-0.8018	1.005	-0.9615	-0.8313	1.0128
hsa-miR-140-3p	1.0943	1.1978	1.3663	1.3822	1.1403
hsa-miR-140-5p	-0.9678	1.1489	-0.9189	-0.7774	-0.7255
hsa-miR-141	1.8494	-0.9652	1.5889	1.2811	-0.9447
hsa-miR-141*	2.5322**	1.1737	2.2752**	1.7782	1.1864
hsa-miR-142-3p	1.9155	1.0218	1.635	1.2456	-0.8518
hsa-miR-143	-0.6667	3.4831	1.3107	1.1251	1.3131
hsa-miR-143*	2.7699**	1.6525	2.2985**	1.8111	1.5906
hsa-miR-145	-0.9592	3.9684	1.8115	1.6584	1.7125
hsa-miR-145*	2.5263**	1.5945	2.2752**	1.7037	1.2774
hsa-miR-146a	1.3138	1.1392	1.4785 *	1.1294	1.379
hsa-miR-146a*	3.0933**	1.2854	2.3276**	2.3233**	1.4627
hsa-miR-146b-5p	1.3921	1.0987	1.1553	1.0422	1.0029
hsa-miR-148a	2.5205**	1.3777	2.0751*	1.6329	1.1343
hsa-miR-148b	1.6523	-0.9748	1.3581	1.0748	-0.7505
hsa-miR-149	-0.9721	1.1419	1.1585	1.0349	1.0479
hsa-miR-149*	1.5326	1.0321	1.1441	1.9857	1.2918
hsa-miR-150	1.7852	1.118	1.6094	1.2918	1.4056
hsa-miR-150*	1.8102	-0.8415	1.5795	1.7917	1.2064
hsa-miR-151-3p	1.1298	-0.879	-0.9957	-0.9179	1.1187
hsa-miR-151-5p	-0.6364	-0.6541	-0.7443	-0.7384	1.2367
hsa-miR-152	1.6116	1.2281	1.4012	1.1559	-0.8314
hsa-miR-153	1.3824	1.1494	1.2193	1.0219	-0.7335
hsa-miR-1538	2.1752*	1.3227	1.9197	2.6923**	1.982
hsa-miR-154	-0.6337	1.0218	-0.717	-0.6934	-0.6833
hsa-miR-154*	2.1308*	1.1966	1.8601	1.3893	-0.9863
hsa-miR-155	2.2895**	1.1545	2.0317*	1.6423	1.1641
hsa-miR-15a	-0.4026	-0.7559	-0.426	-0.3968	-0.4438
hsa-miR-15b	1.0998	-0.8375	-0.9759	-0.9976	-0.8049
hsa-miR-16	-0.4033	-0.7499	-0.4465	-0.5001	-0.681
hsa-miR-17	-0.6154	-0.8245	-0.7376	-0.7304	-0.8797
hsa-miR-17*	1.1594	-0.9769	1.0789	-0.8909	-0.8032
hsa-miR-181a	-0.3395	-0.6387	-0.5061	-0.4643	1.7634
hsa-miR-181a*	2.7633**	1.1843	2.2892**	1.7715	1.2537
hsa-miR-181b	-0.3848	-0.6948	-0.6365	-0.5823	-0.9715
hsa-miR-181c	-0.8114	-0.9322	-0.7779	-0.7174	-0.6471
hsa-miR-181c*	1.9916	1.0768	1.7639	1.4374	1.4119
hsa-miR-181d	-0.6167	-0.7725	-0.5996	-0.5403	-0.6282
hsa-miR-1825	2.4775**	1.1625	2.1198*	1.5906	1.1943
hsa-miR-1826	-0.5228	-0.9755	-0.5945	-0.515	-0.819
hsa-miR-1827	2.6328**	1.2518	2.2889**	2.123**	1.7218
hsa-miR-185	-0.9045	-0.7666	-0.9684	1.0278	1.6966
hsa-miR-185*	2.5852**	1.2166	2.2509**	2.1071**	1.4355

Mature ID	Fold Regulation (compared to Control)				
	MSA	DLB	AD	PSP	CBD
hsa-miR-186	1.5037	1.0469	1.2275	-0.9748	-0.698
hsa-miR-187	2.5844**	1.2407	2.0671**	1.6328	1.2743
hsa-miR-188-5p	2.2944**	1.1861	2.1554*	1.9468	1.3199
hsa-miR-18a	1.9321	-0.8959	1.5042	1.2582	-0.916
hsa-miR-18a*	2.5551**	1.2168	2.1509**	1.6446	1.1913
hsa-miR-18b	1.6381	1.0486	1.4654	1.1692	-0.9508
hsa-miR-190	1.7808	1.1054	1.5464	1.2474	-0.817
hsa-miR-1908	3.5761	1.2004	2.2891**	4.2842**	2.7578
hsa-miR-1909	2.9306	1.2018	2.2251**	3.8335**	2.5486
hsa-miR-191	1.6776	-0.8309	1.4094	1.2365	2.7657
hsa-miR-1913	2.2357*	1.0443	1.9954	1.5025	1.0258
hsa-miR-1914	2.4521**	1.2075	2.0998*	1.6338	1.2168
hsa-miR-1914*	1.5834	-0.9311	1.3807	1.4606	1.2095
hsa-miR-1915	2.1626**	1.2299	1.7464	2.1516**	1.5159
hsa-miR-192	2.4314**	1.1844	1.9074	1.6013	1.1557
hsa-miR-193a-3p	2.6193**	1.3914	2.2449**	1.8428	1.2897
hsa-miR-193a-5p	2.0292**	1.1968	1.9513	1.5789	1.4397
hsa-miR-193b	1.4486	-0.8752	1.3439	1.1576	1.5911
hsa-miR-193b*	2.3344**	1.0307	1.8411	1.8049	1.4284
hsa-miR-194	2.1052**	1.0522	1.8666	1.4428	1.0187
hsa-miR-194*	2.4956**	1.1819	2.2312*	1.8625	1.2304
hsa-miR-195	-0.895	1.1219	-0.9449	-0.8855	1.0711
hsa-miR-196a*	2.2265**	1.0735	1.8912	1.5492	1.1523
hsa-miR-197	1.3452	-0.915	1.6077	-0.9217	-0.8632
hsa-miR-1972	1.6269	-0.9791	1.3828	1.2803	-0.7893
hsa-miR-1973	-0.5997	1.4476	-0.5544	-0.2951	-0.2982
hsa-miR-1975	-0.3748	-0.9096	1.0362	-0.7677	-0.8043
hsa-miR-1976	2.282**	1.1012	1.9644	1.4736	1.0442
hsa-miR-1979	-0.176	-0.699	-0.3234	-0.2975	-0.4788
hsa-miR-198	2.7026	1.2199	1.7419	2.2269**	1.9566
hsa-miR-199a-3p,hs	2.0185*	1.7299	1.8218	1.4413	1.0075
hsa-miR-199a-5p	2.7737**	1.7575	2.3744**	1.9203	1.3589
hsa-miR-19a	2.1893*	1.1012	1.8323	1.4594	1.0173
hsa-miR-19b	-0.6746	-0.8266	-0.8066	-0.6782	-0.7467
hsa-miR-19b-1*	2.3973**	1.1656	2.0004*	1.5165	1.0029
hsa-miR-200b	1.5516	1.256	1.6902**	1.5265	1.7744
hsa-miR-202	2.6803**	1.1906	2.1573**	1.8367	1.2357
hsa-miR-203	2.0802**	1.0357	1.7785	1.4138	1.0542
hsa-miR-204	1.6539	1.135	1.4211	1.1439	-0.8943
hsa-miR-205*	2.4551*	1.1254	2.0768**	1.5733	1.1007
hsa-miR-206	-0.605	-0.5837	-0.6363	-0.4268	-0.3498
hsa-miR-20a	-0.5422	-0.7255	-0.6057	-0.5528	-0.6374
hsa-miR-20b	-0.7538	-0.8631	-0.7299	-0.6652	-0.6789
hsa-miR-20b*	-0.9473	1.0311	1.0855	1.036	-0.9876
hsa-miR-21	-0.5932	1.2073	-0.5332	-0.4906	-0.3487
hsa-miR-210	1.2531	1.0859	1.0766	-0.8273	-0.5447
hsa-miR-2110	1.8182	1.1397	1.7591	1.7922	1.4039
hsa-miR-212	2.4315*	1.1567	2.0235*	1.6023	1.5232
hsa-miR-214	1.5524	1.3214	1.3863	1.3646	1.0431
hsa-miR-218	-0.9237	1.0247	-0.8924	-0.6815	-0.555
hsa-miR-218-1*	1.4695	1.0609	1.2483	-0.9255	-0.6436
hsa-miR-219-1-3p	2.7028**	1.2192	2.2715**	1.7341	1.2257
hsa-miR-219-2-3p	-0.4742	-0.4791	-0.4872	-0.4467	-0.7484
hsa-miR-219-5p	-0.4657	-0.6025	-0.4005	-0.2979	-0.2305

Mature ID	Fold Regulation (compared to Control)				
	MSA	DLB	AD	PSP	CBD
hsa-miR-22	-0.656	1.1391	-0.9467	-0.8911	-0.982
hsa-miR-22*	1.4463	1.0352	1.2923	1.0551	-0.7836
hsa-miR-221	-0.744	-0.9282	-0.8474	-0.7884	1.306
hsa-miR-221*	2.2695*	1.0699	1.887	1.5718	1.2102
hsa-miR-222	-0.7021	-0.9457	1.0669	-0.9489	1.0298
hsa-miR-223	1.0628	-0.8691	1.096	-0.9171	-0.6865
hsa-miR-224	2.3129*	1.1127	1.9935	1.5459	1.0829
hsa-miR-2278	2.4061**	1.1459	2.0182**	1.5712	1.1146
hsa-miR-23a	-0.4965	1.2633	-0.5582	-0.6067	-0.6182
hsa-miR-23a*	2.0585	1.0728	1.2531	1.6118	1.1988
hsa-miR-23b	-0.5463	-0.8659	-0.6665	-0.6433	1.1956
hsa-miR-24	1.1369	1.1575	1.5204	1.6436	2.5154
hsa-miR-25	1.9837	-0.9948	1.5951	1.3315	-0.91
hsa-miR-25*	2.7173**	1.2378	2.1305**	2.2238**	1.4632
hsa-miR-26a	-0.4631	-0.979	-0.8165	-0.8181	1.1577
hsa-miR-26b	-0.2878	-0.8003	-0.2919	-0.2922	-0.2587
hsa-miR-27a	-0.6802	1.2798	-0.5852	-0.5856	-0.6046
hsa-miR-27b	-0.2764	-0.831	-0.2692	-0.2893	-0.3288
hsa-miR-28-3p	2.1042**	1.1169	1.7655	1.4497	1.2015
hsa-miR-28-5p	-0.9786	-0.8605	1.0069	-0.8552	-0.7652
hsa-miR-296-3p	2.1953*	1.0788	1.8071	1.7911	1.3633
hsa-miR-296-5p	2.2016**	1.2439	1.7935	1.5924	1.3813
hsa-miR-297	2.2214**	1.2121	1.9312	1.4861	1.0583
hsa-miR-298	1.9149	1.127	1.6256	1.9315	1.5242
hsa-miR-299-3p	2.1598*	1.1538	1.9763	1.5885	1.5049
hsa-miR-299-5p	2.5651**	1.1631	2.3465**	1.7845	1.8821
hsa-miR-29a	-0.6445	-0.8631	-0.6034	-0.6964	-0.9893
hsa-miR-29b	-0.1608	-0.8126	-0.1908	-0.2317	-0.2555
hsa-miR-29b-1*	2.0786**	1.0117	1.8003	1.3457	-0.9822
hsa-miR-29b-2*	1.2967	1.0092	1.3469	1.1991	1.2431
hsa-miR-29c	-0.3543	-0.8749	-0.3489	-0.3782	-0.3768
hsa-miR-29c*	-0.9501	1.0094	1.0406	-0.9185	-0.9081
hsa-miR-301a	2.2994*	1.2021	1.9107	1.4942	1.0634
hsa-miR-302c	2.4507**	1.2328	2.1005**	1.6585	1.1736
hsa-miR-30a	-0.7248	1.1723	-0.8105	-0.8942	-0.95
hsa-miR-30a*	1.5756	1.1321	1.3999	1.1913	-0.9215
hsa-miR-30b	-0.8112	1.0173	1.0835	-0.965	-0.9631
hsa-miR-30b*	1.8635	1.1609	1.7895	1.6378	1.2455
hsa-miR-30c	-0.8997	-0.9882	-0.8791	-0.8699	1.4437
hsa-miR-30c-1*	2.2795	1.1539	1.9022	1.6325	1.1888
hsa-miR-30c-2*	2.7503	1.2658	1.9105	2.151**	1.6588
hsa-miR-30d	-0.9289	-0.9858	1.0387	-0.9539	1.9741
hsa-miR-30e	-0.795	-0.9945	-0.7364	-0.7251	-0.8294
hsa-miR-30e*	1.8018	1.1614	1.5051	1.2265	-0.8881
hsa-miR-31	1.7495	1.0172	1.3668	1.3685	2.6379
hsa-miR-3121	2.1799**	1.1713	1.9639	1.8979	1.2435
hsa-miR-3122	2.3202**	1.0901	2.0243*	2.0196**	1.6511
hsa-miR-3125	1.8232	-0.9831	1.4919	1.7211	1.3119
hsa-miR-3126-5p	2.8411*	1.2347	2.2831*	2.1432**	1.4737
hsa-miR-3127	1.3201	-0.8089	1.0318	-0.9242	-0.7444
hsa-miR-3131	1.8492	-0.9856	1.527	2.1397	1.5103
hsa-miR-3132	1.2848	-0.9542	1.0698	1.2752	-0.9596
hsa-miR-3135	2.7231**	1.1951	2.2031**	1.6955	1.1634
hsa-miR-3137	2.5001**	1.1911	2.1353**	1.7926	1.1936

Mature ID	Fold Regulation (compared to Control)				
	MSA	DLB	AD	PSP	CBD
hsa-miR-3138	1.321	-0.9325	1.1894	1.4498	-0.9533
hsa-miR-3141	1.2433	-0.7946	1.0031	1.6028	1.1199
hsa-miR-3144-5p	1.9361	1.0996	1.6517	1.7067	1.3721
hsa-miR-3145	2.2044**	1.1415	1.8621	1.4036	1.0106
hsa-miR-3146	-0.6397	-0.6989	-0.619	-0.4441	-0.3316
hsa-miR-3147	1.4527	-0.8657	1.1273	1.4849	1.1136
hsa-miR-3149	1.0473	1.0466	-0.9059	-0.6374	-0.8399
hsa-miR-3150	2.6099**	1.2555	2.2524**	1.8193	1.2992
hsa-miR-3151	1.9544	1.0473	1.6878	2.1591**	1.5856
hsa-miR-3152	2.1752**	1.1509	1.8084	1.5757	1.0886
hsa-miR-3153	2.3896*	1.09279	2.086**	2.0395**	1.5792
hsa-miR-3154	1.4085	-0.9281	1.1163	1.8818	1.3539
hsa-miR-3156	2.0518*	-0.9755	1.7636	1.7846	1.5028
hsa-miR-3162	1.1353	1.0566	-0.8753	1.2585	1.0899
hsa-miR-3163	2.3105**	1.1536	1.9732	1.7562	1.4427
hsa-miR-3172	-0.0389	-0.8609	-0.0811	-0.0801	-0.3111
hsa-miR-3173	1.8105	1.1189	1.5202	1.8143	1.3232
hsa-miR-3174	2.1963	1.0425	1.7781	1.7906	1.7297
hsa-miR-3175	1.0137	1.194	-0.9596	1.1087	-0.7397
hsa-miR-3176	1.6985	-0.9185	1.4096	1.1816	1.2636
hsa-miR-3177	2.5601**	1.1543	2.0436*	2.0137**	1.6838
hsa-miR-3178	1.0796	1.2205	-0.7972	1.3021	-0.9057
hsa-miR-3179	2.2702*	1.1286	1.9053	1.7673	1.4616
hsa-miR-3180-3p	2.815**	1.2341	2.1976*	2.8678*	2.017
hsa-miR-3182	2.3629**	1.0668	1.9155	1.5575	1.0831
hsa-miR-3184	2.7655**	1.2608	2.3269*	1.9974	1.4933
hsa-miR-3185	2.6651**	1.2111	2.1215**	2.2944**	1.8736
hsa-miR-3186-3p	2.8303**	1.2353	2.4401*	1.9056	1.3611
hsa-miR-3187	2.1089*	-0.909	1.6763	1.3305	1.1705
hsa-miR-3189	2.6061**	1.2143	2.3181**	1.9998	1.3352
hsa-miR-3190-3p	2.7253**	1.1485	2.1918**	2.3464*	1.5397
hsa-miR-3190-5p	2.6417**	1.1874	2.1964**	2.3035*	1.3615
hsa-miR-3191	2.6721**	1.228	2.2144*	1.9542	1.3561
hsa-miR-3192	2.5767**	1.2356	2.2464**	2.0296**	1.4037
hsa-miR-3194	2.1057**	1.1253	1.8457	1.6178	1.1263
hsa-miR-3195	2.6782*	1.2519	2.1707**	1.9192	1.3046
hsa-miR-3196	-0.9682	1.1929	1.0149	1.5964	1.1679
hsa-miR-3197	2.5577**	1.1863	2.1211**	1.8824	1.2351
hsa-miR-3198	-0.5397	-0.5256	-0.4231	-0.3947	-0.3302
hsa-miR-32*	1.1467	1.0782	1.0769	-0.7584	-0.7182
hsa-miR-3200	1.7445	1.1864	1.8653	1.3527	1.3686
hsa-miR-3201	2.2756**	1.0702	2.0188*	1.5341	1.0695
hsa-miR-3202	1.2902	-0.9818	-0.9398	1.2476	1.035
hsa-miR-320a,hsa-r	-0.7301	-0.8888	1.2272	1.3721	2.1343
hsa-miR-320b	1.2578	1.0357	1.5224	1.5971	3.5361
hsa-miR-320c	-0.8505	1.0649	1.1252	1.3737	1.7994
hsa-miR-320d	-0.407	-0.9886	-0.584	-0.5925	-0.6103
hsa-miR-320e	-0.8558	1.0021	-0.6977	-0.6897	-0.5987
hsa-miR-323-3p	1.7322	1.1959	1.4789	1.1775	-0.8833
hsa-miR-323-5p	2.2555*	1.1167	1.9154	2.0097*	1.6674
hsa-miR-323b-5p	-0.4963	-0.8748	-0.5222	-0.5252	-0.5123
hsa-miR-324-3p	1.4213	1.2567	1.8901	1.6235	1.6599
hsa-miR-324-5p	1.2864	-0.9448	1.3443	1.1405	2.2009
hsa-miR-326	1.8563	1.1577	1.7437	1.4141	1.1919

Mature ID	Fold Regulation (compared to Control)				
	MSA	DLB	AD	PSP	CBD
hsa-miR-328	1.0925	-0.8211	1.136	1.0018	1.2516
hsa-miR-329	1.6593	1.1693	1.6005	1.3431	1.1459
hsa-miR-330-3p	1.3602	1.0174	1.4087	1.3947	1.5856
hsa-miR-330-5p	1.6211	1.0989	1.5585	1.3948	1.5029
hsa-miR-331-3p	1.1506	1.1197	1.6748	1.3581	1.4627
hsa-miR-331-5p	2.4395**	1.1859	2.2826**	1.6878	1.3072
hsa-miR-335	1.4445	1.1337	1.1901	-0.9773	-0.6724
hsa-miR-337-5p	2.5561**	1.1507	2.1629**	1.7413	1.2016
hsa-miR-338-3p	-0.4262	-0.6631	-0.3735	-0.3248	-0.2353
hsa-miR-338-5p	1.3616	-0.8998	1.1612	-0.9945	1.1238
hsa-miR-339-3p	1.8884	1.0517	1.5594	1.2159	1.3577
hsa-miR-339-5p	1.7809	1.0741	1.6751	1.5145	1.1318
hsa-miR-33a	2.2632*	1.2221	1.8458	1.4712	1.0452
hsa-miR-340	1.3232	-0.9894	1.2207	-0.9118	-0.6421
hsa-miR-342-3p	1.33784	-0.9851	1.3414	1.2046	1.171
hsa-miR-342-5p	1.8135	1.1156	1.5755	1.3112	1.2898
hsa-miR-345	1.6206	1.0457	1.7776	1.3848	1.2742
hsa-miR-346	2.4024**	1.1341	1.9919	1.6143	1.5334
hsa-miR-34a	-0.7171	-0.882	-0.8464	-0.8239	1.4231
hsa-miR-34b*	1.9713	1.0178	1.6087	1.3376	1.0828
hsa-miR-34c-5p	2.2516**	1.1729	2.0078**	1.4404	1.1691
hsa-miR-361-3p	1.2954	1.0231	1.2162	1.0224	-0.9559
hsa-miR-361-5p	-0.9915	-0.863	1.0307	-0.9089	1.1419
hsa-miR-362-5p	2.8167**	1.2392	2.2871**	1.7938	1.8531
hsa-miR-363	2.189**	1.0998	1.8807	1.4346	1.049
hsa-miR-363*	-0.8188	-0.7703	-0.7091	-0.6095	-0.6395
hsa-miR-365	1.7182	1.0026	1.4078	1.1425	-0.8198
hsa-miR-365*	2.4041**	1.114	1.9502	1.9448	1.5681
hsa-miR-367	2.5911**	1.2324	2.2028**	1.8084	1.2031
hsa-miR-369-3p	2.3393*	1.1641	1.8132	1.4867	-0.9854
hsa-miR-370	1.3006	1.0984	1.7701	1.3969	1.8232
hsa-miR-371-5p	2.9686**	1.2689	2.3261**	2.4776**	1.7575
hsa-miR-373*	3.0354*	1.2372	2.4664**	2.4994**	1.5365
hsa-miR-374a	1.7555	1.2225	1.4992	1.1431	-0.8893
hsa-miR-374b	1.1812	1.0591	1.0377	-0.8123	-0.5748
hsa-miR-376a	1.9176	1.0225	1.5733	1.2891	-0.9003
hsa-miR-376b	2.4939**	1.1887	2.1314**	1.6034	1.1555
hsa-miR-376c	-0.8921	-0.9633	-0.7341	-0.6509	-0.5066
hsa-miR-377*	2.2671*	1.1067	1.8286	1.4901	1.1208
hsa-miR-378	-0.9189	-0.9992	-0.8066	-0.8151	-0.9067
hsa-miR-378c	1.5321	1.1546	1.4462	1.5508	1.2259
hsa-miR-379	1.4136	1.2181	1.7726	1.3371	1.4661
hsa-miR-381	1.6484	1.1561	1.5106	1.2549	1.2423
hsa-miR-382	1.1371	1.0089	1.2258	1.0588	1.1947
hsa-miR-383	1.8151	1.1234	1.9558	1.5116	1.4171
hsa-miR-409-3p	1.8971	1.1797	1.7509	1.2927	1.6067
hsa-miR-409-5p	2.0623*	1.074	1.9046	1.3561	1.0229
hsa-miR-410	1.5957	1.1679	1.3771	1.0833	-0.7712
hsa-miR-411	1.9513	-0.96	1.6745	1.2981	-0.9844
hsa-miR-412	2.7915**	1.2758	2.3148**	1.7964	1.3071
hsa-miR-421	1.9935	1.1519	1.8097	1.4312	1.0611
hsa-miR-422a	2.2012**	1.1155	1.8576	1.5136	1.1017
hsa-miR-423-3p	1.1959	1.0443	1.5213	1.4169	1.9391
hsa-miR-423-5p	1.0334	-0.7639	1.1962	1.2747	2.2982

Mature ID	Fold Regulation (compared to Control)				
	MSA	DLB	AD	PSP	CBD
hsa-miR-424	2.4531*	1.1595	2.0493*	1.5664	1.0491
hsa-miR-425	1.5472	1.0572	1.4971	1.1672	1.0581
hsa-miR-425*	1.4868	-0.9275	1.3662	1.1354	1.0281
hsa-miR-4251	2.5196**	1.1638	2.2215*	1.8342	1.3032
hsa-miR-4253	2.6445**	1.1476	2.3303*	1.8901	1.3618
hsa-miR-4257	2.1649*	-0.9589	1.7151	1.9818	1.366
hsa-miR-4258	2.3298**	-0.9962	2.0848**	1.698	1.1367
hsa-miR-4259	1.0243	-0.8108	-0.8646	-0.8272	-0.6872
hsa-miR-4261	1.6212	1.0264	1.4171	1.3282	1.0255
hsa-miR-4265	-0.8942	-0.9459	-0.9467	-0.8883	1.0593
hsa-miR-4270	2.074	-0.8448	1.4652	2.4616**	1.7494
hsa-miR-4271	-0.8466	1.0656	-0.6775	-0.9427	-0.7999
hsa-miR-4274	2.1531*	1.1908	1.8631	1.7176	1.1451
hsa-miR-4281	2.4267*	1.0467	2.0741**	2.5439**	1.5277
hsa-miR-4284	-0.3905	-0.9174	-0.7848	-0.6616	1.0576
hsa-miR-4286	-0.1014	-0.5775	-0.1675	-0.1624	-0.1022
hsa-miR-4292	2.5851**	1.2411	2.2381**	1.9314	1.4993
hsa-miR-4294	2.8429	1.1824	1.7631	3.2707**	2.3749
hsa-miR-4298	-0.8204	-0.8629	1.0962	-0.9622	-0.7566
hsa-miR-4299	2.3488	1.2555	1.8008	1.5214	1.2371
hsa-miR-4300	2.5652**	1.2363	2.2459*	2.2011**	1.4753
hsa-miR-4301	2.5971**	1.1596	2.2139**	1.7335	1.3645
hsa-miR-4306	1.2026	-0.9528	1.0458	1.0875	-0.8766
hsa-miR-431*	2.1285**	1.1308	1.8907	1.4824	1.2251
hsa-miR-4312	2.8541**	1.2754	2.4801**	1.8041	1.3735
hsa-miR-4314	-0.9519	-0.9151	-0.834	1.0485	-0.7966
hsa-miR-432	1.7022	1.1904	1.7561	1.4072	2.4148
hsa-miR-4323	2.0801*	1.0584	1.8422	1.3837	-0.9742
hsa-miR-4324	-0.2612	-0.892	-0.3431	-0.3431	-0.3797
hsa-miR-4327	1.9306	1.1506	1.5492	2.0774**	1.6399
hsa-miR-433	1.2057	1.0669	1.5342	1.0961	1.2656
hsa-miR-451	-0.4919	-0.782	-0.4208	-0.4401	-0.3433
hsa-miR-454	2.0762**	1.092	1.6051	1.2801	-0.9427
hsa-miR-455-3p	2.1284**	1.0438	1.9437	1.4612	1.5827
hsa-miR-455-5p	2.0839**	1.134	1.8332	1.4774	1.0626
hsa-miR-483-3p	2.7953*	1.1227	2.0661*	1.3899	1.3373
hsa-miR-483-5p	-0.6483	-0.7641	-0.4979	-0.5946	-0.6055
hsa-miR-484	1.8325	1.0266	1.7551	1.5071	1.5294
hsa-miR-485-3p	1.6019	1.1115	1.5511	1.3487	1.2168
hsa-miR-485-5p	1.8891	1.0695	1.9454	1.6337	1.6101
hsa-miR-486-3p	2.5441**	1.1791	2.1434**	1.9222	1.3005
hsa-miR-486-5p	1.8757	-0.9965	1.5727	1.5266	1.3382
hsa-miR-487a	-0.9931	1.0995	-0.9099	-0.7799	-0.6844
hsa-miR-487b	1.246	1.0543	1.3477	1.1104	1.0741
hsa-miR-488	1.4741	1.1249	1.2675	-0.9225	-0.6593
hsa-miR-488*	2.4018**	1.1328	2.0517**	1.5442	1.1638
hsa-miR-490-3p	2.7262**	1.2497	2.3497**	1.8566	1.5238
hsa-miR-490-5p	2.2541**	1.0214	1.9895	1.5537	1.5597
hsa-miR-491-3p	2.3668**	1.0923	1.9207	1.8111	1.5103
hsa-miR-491-5p	1.4969	1.1994	1.8427	1.6946	1.9417
hsa-miR-493	-0.5443	1.0339	-0.6054	-0.7195	-0.6289
hsa-miR-494	1.2365	1.2102	-0.9584	-0.7731	-0.7536
hsa-miR-495	1.1944	1.1362	1.2084	1.0067	-0.7991
hsa-miR-497	-0.7431	-0.9823	-0.8667	-0.7488	-0.7949

Mature ID	Fold Regulation (compared to Control)				
	MSA	DLB	AD	PSP	CBD
hsa-miR-498	2.7226**	1.2231	2.3511**	1.8389	1.3031
hsa-miR-499-5p	2.2947**	1.0828	1.8881	1.4604	-0.9876
hsa-miR-500*	1.6933	1.1603	1.4802	1.2562	1.072
hsa-miR-500,hsa-miR-500-3p	2.3868**	1.1933	2.1154**	1.6626	1.3301
hsa-miR-501-3p	2.2457**	1.2148	1.9095	1.7859	1.5719
hsa-miR-502-3p	2.1304**	1.0709	1.9118	1.5446	1.4702
hsa-miR-503	2.5109**	1.1749	2.287**	1.7266	1.2283
hsa-miR-504	1.7751	1.1419	1.9691	1.6823	1.4239
hsa-miR-505	2.6701*	1.2312	2.2272**	1.7064	1.2637
hsa-miR-505*	2.6918**	1.2209	2.2599**	2.2941**	1.4781
hsa-miR-509-3p	1.6361	1.1546	1.4357	1.2368	1.0294
hsa-miR-513a-3p	1.6972	1.1215	1.5346	1.2712	-0.9009
hsa-miR-513a-5p	1.4507	1.1743	1.1107	1.0348	-0.8329
hsa-miR-513b	2.5421*	1.2841	1.8852	1.5777	1.2085
hsa-miR-513c	2.553**	1.192	2.1976**	1.7217	1.2421
hsa-miR-514b-5p	2.0495 *	1.0517	1.8271	2.3484 *	1.7328
hsa-miR-518c*	2.0151*	1.0031	1.6931	1.6819	1.1666
hsa-miR-518d-5p,hsa-miR-518d-3p	2.7435 *	1.2364	2.3252**	1.9371	1.3169
hsa-miR-519a	2.7815**	1.2838	2.2677**	1.7684	1.2308
hsa-miR-519c-3p	2.8293**	1.3035	2.3359**	1.9352	1.3648
hsa-miR-520f	1.4808	1.1002	1.6165	1.2837	1.1056
hsa-miR-525-3p	2.5824**	1.2822	2.2254**	1.8926	1.3487
hsa-miR-532-3p	1.8413	1.1781	1.8142	1.4776	1.0914
hsa-miR-532-5p	2.1281*	1.1215	1.9841	1.6171	1.0711
hsa-miR-539	1.7116	1.0496	1.4521	1.1497	-0.8222
hsa-miR-543	1.5792	1.1211	1.4274	1.0961	-0.8522
hsa-miR-548t	2.7603**	1.2511	2.3801**	1.7905	1.2134
hsa-miR-550	2.3762**	1.1178	1.9702	1.8461	1.3119
hsa-miR-550*	2.6258**	1.2169	2.2221**	1.7017	1.1647
hsa-miR-551b	2.4019*	1.3706	2.0004	1.6631	1.1789
hsa-miR-553	2.3204*	1.1612	1.9146	1.4568	1.0028
hsa-miR-557	2.8907**	1.2276	2.3514**	2.0406*	1.3486
hsa-miR-559	2.3283**	1.1079	2.0563**	1.5305	1.0951
hsa-miR-564	2.7975**	1.2455	2.3111**	1.8671	1.376
hsa-miR-573	2.0027*	1.1369	1.6795	1.4066	1.1295
hsa-miR-574-3p	1.6791	1.0878	1.4731	1.2143	-0.923
hsa-miR-574-5p	-0.4739	1.1446	-0.8836	-0.4267	-0.6502
hsa-miR-575	2.8155 *	1.2217	2.2387 *	1.8729	1.3057
hsa-miR-576-3p	2.1211**	1.0884	1.8608	1.4372	1.0885
hsa-miR-582-5p	2.2271**	1.1498	1.8954	1.4987	1.057
hsa-miR-583	2.6576*	1.2703	2.1992*	1.9697	1.4903
hsa-miR-584	1.3403	-0.8651	1.1089	-0.9722	-0.9007
hsa-miR-589	2.4275**	1.2013	1.9837	1.6214	1.0738
hsa-miR-590-5p	1.2397	1.0723	1.3601	1.2959	1.1257
hsa-miR-595	2.4578**	1.1503	2.1245*	1.5511	1.259
hsa-miR-598	1.5478	1.0828	1.3531	1.1257	-0.852
hsa-miR-601	2.7313**	1.2819	2.4239**	2.0669**	1.6625
hsa-miR-608	1.637	-0.9786	1.4726	1.5715	1.2859
hsa-miR-612	2.3136**	1.0439	1.8645	1.8471	1.0435
hsa-miR-615-5p	2.5561**	1.2379	2.1034**	2.0018**	1.7461
hsa-miR-616	1.2464	1.0648	1.3123	1.2555	-0.9295
hsa-miR-620	1.7797	1.0157	1.4744	1.8154	1.2592
hsa-miR-625	1.4944	-0.9526	1.5455	1.4102	1.2881
hsa-miR-625*	2.3493**	1.1587	2.0215**	1.6011	1.0784

Mature ID	Fold Regulation (compared to Control)				
	MSA	DLB	AD	PSP	CBD
hsa-miR-627	1.9841	1.0883	1.6461	1.5092	1.0678
hsa-miR-628-3p	2.0571**	1.16	1.7652	1.3679	1.0781
hsa-miR-628-5p	1.1361	1.0762	1.004	-0.9114	-0.7954
hsa-miR-634	1.8334	-0.9515	1.6542	1.1774	-0.8757
hsa-miR-636	-0.6115	-0.8852	-0.6154	-0.5355	-0.4924
hsa-miR-637	3.2121*	1.2164	2.4159*	2.8677**	2.1196
hsa-miR-638	2.5771*	1.1625	2.0784**	3.0471**	2.0288
hsa-miR-643	1.8898	1.0057	1.5763	1.3247	-0.994
hsa-miR-650	-0.2339	1.015	-0.2541	-0.4185	-0.3012
hsa-miR-652	1.5711	-0.9766	1.3999	1.3069	1.7276
hsa-miR-658	1.1098	-0.8854	-0.9735	1.6003	1.2186
hsa-miR-659	2.5404**	1.1659	2.0635*	1.9274	1.3492
hsa-miR-660	2.4342**	1.1822	1.9746	1.6124	1.3227
hsa-miR-663	2.5973**	1.1743	2.2271**	2.0131**	1.2271
hsa-miR-663b	1.5431	1.2615	1.4432	1.2822	1.1701
hsa-miR-664	1.7842	1.0067	1.5837	1.2278	-0.8826
hsa-miR-664*	1.7218	1.139	1.4581	1.2887	1.3076
hsa-miR-665	-0.7816	1.1771	1.0243	-0.9438	-0.718
hsa-miR-671-5p	2.9299*	1.2547	2.4122**	2.7241**	2.1552
hsa-miR-675	2.8293*	1.3907	1.9895	3.5108**	2.3224
hsa-miR-675*	2.2486**	1.1243	1.9702	1.5356	1.0791
hsa-miR-7	-0.6363	1.1648	-0.6444	-0.4699	-0.6896
hsa-miR-7-1*	2.4739**	1.1788	2.0315**	1.6519	1.1637
hsa-miR-708	1.0772	1.1421	1.3581	1.16617	1.8287
hsa-miR-708*	1.8432	1.0691	1.4721	1.2363	-0.9848
hsa-miR-711	2.0248	1.0785	1.394	1.9581	1.3438
hsa-miR-718	2.6885**	1.3099	2.2884**	1.9476	1.4081
hsa-miR-720	-0.2045	-0.6117	-0.3959	-0.4153	-0.2035
hsa-miR-744	3.2074*	1.0361	2.2114	1.8561	4.2971
hsa-miR-744*	2.0273*	1.0797	1.9988**	1.3955	1.0049
hsa-miR-760	1.8006	1.0963	1.8284	2.3499**	1.7661
hsa-miR-762	1.0721	1.2938	2.2292*	1.4527	-0.9111
hsa-miR-765	-0.5619	-0.8849	-0.5235	-0.5309	-0.5852
hsa-miR-766	1.3645	-0.944	1.3193	-0.9505	-0.8254
hsa-miR-769-3p	1.5255	1.165	1.8531	1.6406	1.7821
hsa-miR-769-5p	1.1556	1.0443	1.3788	1.0859	1.5301
hsa-miR-770-5p	1.9137	1.0929	1.8016	1.416	1.5435
hsa-miR-802	1.9688	1.1188	1.6157	1.2553	-0.8372
hsa-miR-873	2.2884**	1.1523	1.9609	1.5395	1.5001
hsa-miR-874	1.3402	1.0656	2.0134*	1.6701	2.3102
hsa-miR-877	1.8868	1.0165	1.5586	1.8611	1.7729
hsa-miR-877*	2.2608	1.1984	1.8211	1.2288	1.0282
hsa-miR-885-3p	2.7219*	-0.9997	2.1011	4.3474*	2.7993
hsa-miR-885-5p	1.8791	1.1229	1.6223	1.3933	1.4195
hsa-miR-886-3p	1.2363	-0.9196	1.0652	1.4006	-0.8224
hsa-miR-886-5p	-0.9973	-0.8597	-0.8327	1.8083	1.1682
hsa-miR-887	2.3326**	1.1335	2.0438**	1.583	1.207
hsa-miR-892a	1.6608	1.1331	1.3959	1.1412	-0.8145
hsa-miR-9	-0.1006	-0.9486	-0.1237	-0.1409	-0.1639
hsa-miR-9*	-0.2461	-0.7905	-0.2719	-0.2668	-0.2857
hsa-miR-920	2.1231*	1.0794	1.6901	2.1485*	1.5368
hsa-miR-921	2.2576*	1.163	1.8359	1.9183	1.3131
hsa-miR-92a	-0.6002	-0.6774	-0.8012	-0.7865	-0.9812
hsa-miR-92a-2*	3.1914*	1.2929	2.3863**	3.3341**	2.4089

Mature ID	Fold Regulation (compared to Control)				
	MSA	DLB	AD	PSP	CBD
hsa-miR-92b	1.0459	-0.8623	1.0814	-0.9387	-0.9597
hsa-miR-92b*	2.4062	1.1624	1.9231	2.4596**	1.7548
hsa-miR-93	-0.8808	-0.9497	1.1765	-0.9915	1.1232
hsa-miR-93*	2.2841**	1.1282	1.9331	1.4921	1.1302
hsa-miR-933	1.0076	-0.7476	1.0601	3.9251	3.2375
hsa-miR-936	2.0508	1.0646	1.3523	2.2001**	1.7633
hsa-miR-939	1.8221	1.1798	1.5375	1.5596	1.2433
hsa-miR-940	2.3191*	1.1279	1.9521	1.6278	1.2647
hsa-miR-95	1.358	1.059	1.1274	-0.9161	-0.6693
hsa-miR-96	2.5299**	1.2533	1.1135	1.6455	1.1295
hsa-miR-98	-0.3227	-0.9288	-0.3769	-0.4986	-0.609
hsa-miR-99a	-0.7545	-0.8833	-0.8935	-0.8961	1.1213
hsa-miR-99a*	1.6847	1.1946	1.5142	1.2517	-0.9682
hsa-miR-99b	-0.9802	-0.9633	-0.9466	-0.9067	-0.8388
hsa-miR-99b*	2.0357**	1.225	1.8181	1.3866	1.246

Supplementary Table 6 – Detailed results of miRNA profiles in transgenic mouse models compared to non tg mice

Mature ID	Fold Regulation compared to Non tg mice				
	MBP1-h α syn tg	MBP29-h α syn tg	mThy1-h α syn tg	mThy1-hAPP tg	mThy1-h τ tg
let-7a	-1.0122	1.1889	1.0026	1.5258	-1.3176
let-7b	-2.2501**	-2.3915*	-1.126	-1.0702	-1.4393
let-7c	-1.3827	-1.289	-1.0561	1.7823	1.1092
let-7d	1.1154	1.2912	-1.0653	1.7276	1.1958
let-7e	-1.229	-1.2596	1.126	1.0971	1.1016
let-7f	5.002**	6.0857**	1.0043	7.9931**	3.9211**
let-7g	2.5184**	3.1629**	-1.0148	3.1122**	1.6477
let-7i	1.7563	2.1491*	1.0543	2.6034**	1.9492
miR-1	23.5067**	48.4609	1.1477	29.0155**	16.0139**
miR-101a	18.2206**	16.2844**	1.0764	46.1657**	15.7934**
miR-106b	4.3469**	5.9364**	-1.029	12.637**	4.3432**
miR-10a	2.8186**	3.3684	-1.1358	3.5115*	1.0434
miR-10b	3.1877**	3.7505	-1.2538	3.7679*	1.1247
miR-124	2.362**	2.4959*	-1.1437	11.7907**	5.2857**
miR-125a-5p	-1.5502	-1.3391	1.0764	1.0659	-1.7196
miR-125b-3p	1.9386	1.3306	1.1841	1.3903	2.9443
miR-125b-5p	-1.1231	1.157	-1.1637	1.2749	-2.1049*
miR-126-3p	4.1554**	5.9432**	-1.038	9.7896**	2.8423*
miR-126-5p	13.1546**	18.2154**	1.0416	19.6132**	6.7252**
miR-130a	2.3743**	2.7424*	-1.1597	6.3735**	2.9375*
miR-138	2.8382**	3.1997**	-1.0009	3.1411**	2.5795**
miR-140	6.0106**	8.7518**	-1.0877	17.0644**	4.6657**
miR-140*	1.7201	1.8677	1.0896	2.31***	1.6707
miR-141	24.0839**	12.9998**	1.3368	17.433	-1.4987
miR-142-3p	17.6305**	28.5665*	-1.0543	32.2133**	12.6589**
miR-142-5p	2.9845**	4.7802*	1.0061	17.8405**	4.5302**
miR-144	16.7084**	13.6698**	-1.3649	28.6988*	7.0718**
miR-146a	2.6759**	5.9742*	-1.069	4.244*	2.31*
miR-150	-1.0246	1.1752	-1.1125	1.2365	-1.5347
miR-155	-1.5	1.7206	-1.0362	-1.026	-2.4701**
miR-15a	8.0836**	10.8122**	-1.0746	13.4972**	9.3854**
miR-15b	1.459	2.1049*	-1.1378	1.4953	1.2082
miR-16	3.9449**	5.4657**	-1.0616	6.9183**	1.8872
miR-17	1.8213	3.2219**	-1.0326	6.1671**	1.7618
miR-182	5.5117**	4.5015**	1.1241	3.6311	-1.4146
miR-183	4.8906**	3.1501**	1.1577	3.7117	-2.5765
miR-186	2.7226**	4.3583**	-1.038	6.2064**	2.608**
miR-18a	4.1411**	8.7822*	-1.2131	10.7127**	3.6648**
miR-191	1.2016	1.5879	-1.2237	1.8883	-1.2987
miR-196a	-2.1214	-2.1134	-1.3839	-1.3283	-4.0476
miR-196b	-1.633	-1.9369	-1.396	-1.4245	-2.2057
miR-199a-5p	3.6999**	4.3709**	1.0078	5.7011**	3.7853**
miR-199b	3.8637**	5.7209**	-1.0434	5.0382**	2.1025*
miR-19a	12.0211**	21.3636**	1.2516	18.4696**	7.6719**
miR-19b	9.6131**	18.9123**	-1.038	21.2283**	6.5906**
miR-20a	2.775**	5.6291**	-1.0326	6.4961**	2.2275*

Fold Regulation compared to Non tg mice					
Mature ID	MBP1-h α syn tg	MBP29-h α syn tg	mThy1-h α syn tg	mThy1-hAPP tg	mThy1-htau tg
miR-21	13.0186**	19.2317**	1.0043	22.5556**	6.3993**
miR-214	1.4641	1.4204	-1.4179	-1.1202	-1.2757
miR-218	5.4736**	6.1422**	1.0452	6.1139**	2.8243**
miR-22	2.1398*	3.1831**	1.0416	6.7136**	3.5135**
miR-23a	2.6436**	3.7289**	1.0184	4.8191**	1.9335
miR-23b	1.9691	2.3127**	-1.0009	2.9409**	1.3968
miR-24	2.639**	2.9596*	-1.1144	4.7527**	1.3025
miR-25	1.3972	2.0747**	1.128	2.0795**	-1.2294
miR-27a	9.4972**	10.3777*	-1.0131	21.4874**	5.3563**
miR-27b	3.1547**	3.8738**	1.0219	6.4252**	2.473*
miR-28	1.4489	1.996	-1.0184	2.544**	1.0446
miR-291a-3p	-1.7471	-1.662	-1.069	-3.9621	-2.3087
miR-295	-2.1287	-1.6045	-1.842	-2.2121	-4.9919
miR-29a	3.0844**	3.0253**	1.0506	4.7253**	3.0587**
miR-29b	25.5013**	20.6597**	1.1241	42.4811**	24.8973**
miR-302d	-1.2614	-1.0482	-1.3601	-1.1286	-1.4832
miR-30a	3.0209**	3.7505*	1.0452	4.7253**	1.6467
miR-30c	6.8685**	8.4635**	1.0543	9.2615**	4.3281**
miR-30d	2.5491**	3.0605**	-1.1299	3.9735**	1.5048
miR-30e	5.6178**	7.1747**	1.029	15.4863**	4.7199**
miR-31	1.9219	2.3154**	-1.0452	2.672**	1.6137
miR-32	24.6754**	29.9521**	-1.2048	104.0584**	17.2726**
miR-322	9.8833**	16.2468*	1.0746	14.242**	5.1263**
miR-335-5p	28.3937**	27.8979**	1.2801	22.9764**	11.8317**
miR-34c	4.7982**	4.8498**	1.0543	6.9223**	3.8117**
miR-374	5.2689**	6.6557**	1.0272	7.2497**	3.0746**
miR-411	3.3173**	4.3157**	1.0839	4.7775**	2.1918*
miR-425	2.2**	2.8572**	1.0009	3.876**	1.8796
miR-467c	2.3134**	2.617**	1.1163	3.1629**	1.4278
miR-467e	5.2234**	6.21**	-1.0201	10.0881**	2.8954**
miR-488	2.8235**	3.1483**	-1.0877	6.6865**	4.4089**
miR-541	1.8277	2.207*	-1.0254	2.4945**	1.3704
miR-744	13.9288**	13.3036**	-1.1457	13.6461**	12.9623**
miR-872	10.4831**	15.4952**	1.082	13.3962**	6.4067**
miR-880	-1.7994	-1.467	-1.396	-1.3751	-2.8954*
miR-9	4.3244**	5.6129*	1.082	7.7387**	2.397
miR-92a	-1.9319	-1.451	-1.0416	-1.9414	-2.2365**
miR-93	-1.0228	1.7196	-1.0858	2.6306**	-1.1061
miR-96	13.1546**	9.5715**	1.1657	1.1995	1.5347
miR-99a	3.6999**	4.4679**	1.2048	3.6712**	1.8905
miR-99b	-1.4845	-1.202	-1.0915	-1.0933	-2.3943*