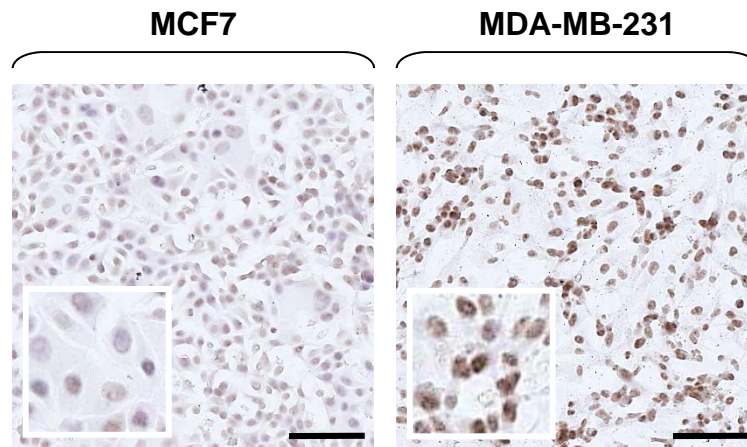


**Figure S2**



**Figure S2: *In situ* detection of DNA methylation of the PRKD1 promoter in MCF7 and MDA-MB-231 cells.** *PRKD1* gene promoter methylation was determined in MCF7 and MDA-MB-231 cells. DNA was bisulfite modified *in situ*. *In situ* MSP-PCR and hybridization were performed using methylation-specific primers and probes. Bars represent 100  $\mu\text{m}$ .