

Figure S4

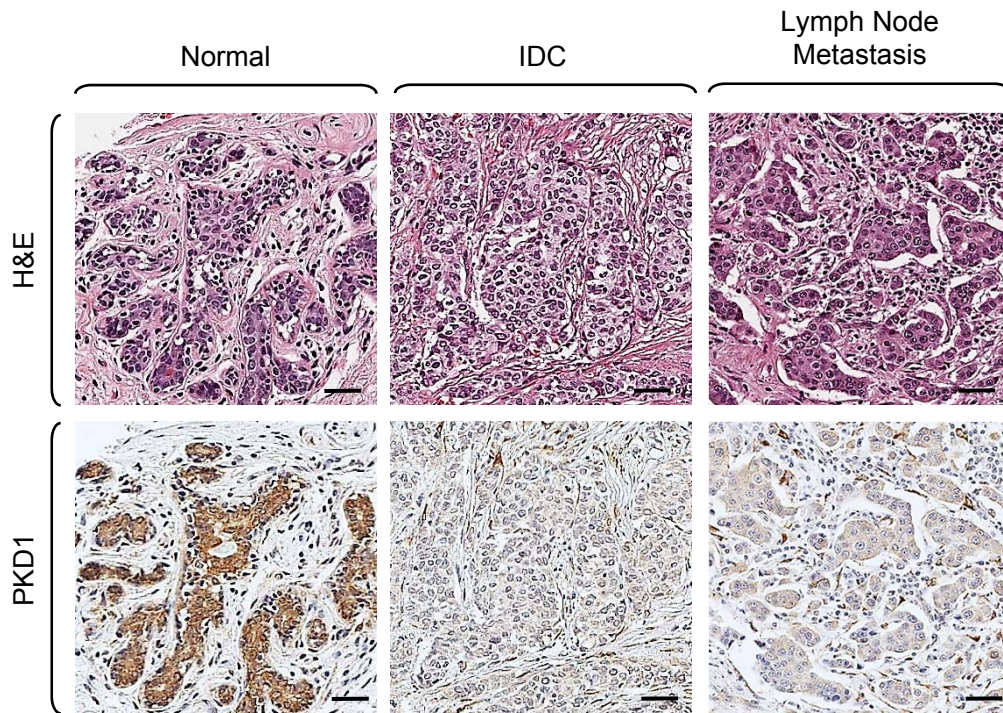


Figure S4: PKD1 expression in human IDC and metastasis from lymph nodes. Tissue microarray slides containing histologically-confirmed matching human invasive ductal carcinoma (IDC), lymph node metastasis and normal human breast tissue samples were analyzed for PKD1 expression using an isoform-specific antibody. Representative pictures of normal, IDC and lymph node metastasis tissues are depicted.