

Fig. S1: iNKT cells were not activated in α -GalA^{-/-}:Nur77^{gfp} chimeras. Tet⁺ iNKT cells were isolated from α -GalA^{-/-}:Nur77^{gfp} mixed bone marrow chimeras and analyzed by flow cytometry for GFP expression. Histogram shows GFP expression for iNKT cells from a WT:Nur77^{gfp} mixed bone marrow chimera (gray) and iNKT cells from α -GalA^{-/-}:Nur77^{gfp} mixed bone marrow chimera (red). Data shown is representative of three independent experiments (WT:Nur77^{gfp} = 3; α -GalA^{-/-}:Nur77^{gfp} = 10).

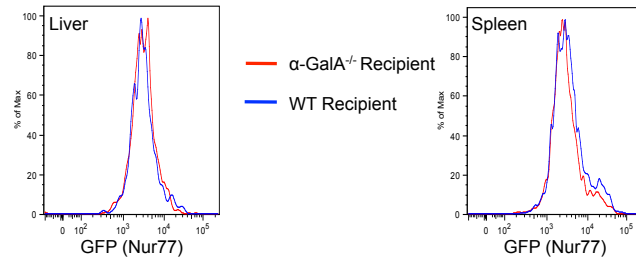


Fig. S2: iNKT were not activated after transfer into a-Gal A^{-/-} mice. iNKT cells were enriched from congenic (CD45.1) Nur77^{gfp} Va14 TCR transgenic B6 mice and transferred into either WT or a-GalA^{-/-} recipients. One day later, the transferred cells were recovered with magnetic beads and tet⁺ cells analyzed by flow cytometry. Histograms show representative data of hepatic or splenic iNKT cells isolated from a WT recipient (blue) or a-GalA^{-/-} recipient (red) from one experiment (WT recipient = 3; a-GalA^{-/-} recipient = 3).

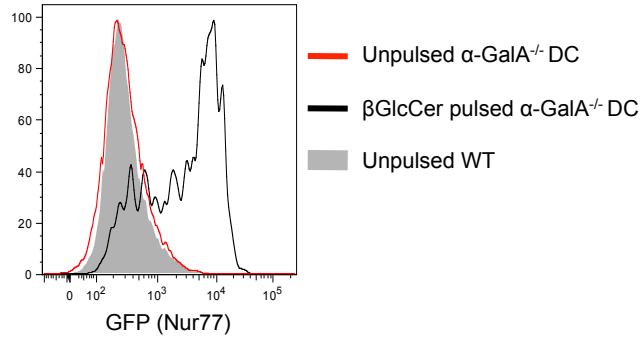


Fig. S3: α -Gal A^{-/-} BMDCs transferred into Nur77^{gfp} mice did not activate iNKT cells. Unpulsed α -Gal A^{-/-} BMDC, α -Gal A^{-/-} BMDC pulsed with bGlcCer, or unpulsed WT BMDC were transferred into Nur77^{gfp} mice, and tet⁺ iNKT cells were analyzed by flow cytometry 18 h later. Histogram shows representative GFP expression for iNKT cells from mice that received unpulsed WT BMDC (gray), unpulsed α -Gal A^{-/-} BMDC (red), or α -Gal A^{-/-} BMDC pulsed with bGlcCer (black) from two independent experiments (WT BMDC = 2, unpulsed α -Gal A^{-/-} BMDC = 4, α -Gal A^{-/-} BMDC pulsed with bGlcCer = 2).

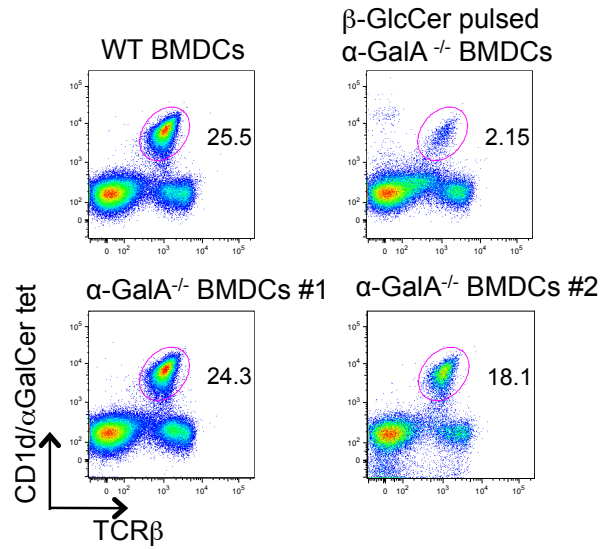


Fig. S4: Inconsistent TCR internalization in iNKT cells after injection of α -Gal A^{-/-} BMDC. Unpulsed α -Gal A^{-/-} BMDC, α -Gal A^{-/-} BMDC pulsed with β GlcCer, or WT BMDC were transferred into Nur77^{gfp} mice. After 18 h, the tet⁺ iNKT cells were gated and showed an inconsistent reduction in proportion compared to WT (presumed to reflect TCR internalization) when injected with α -Gal A^{-/-} BMDC (compare bottom left to bottom right).