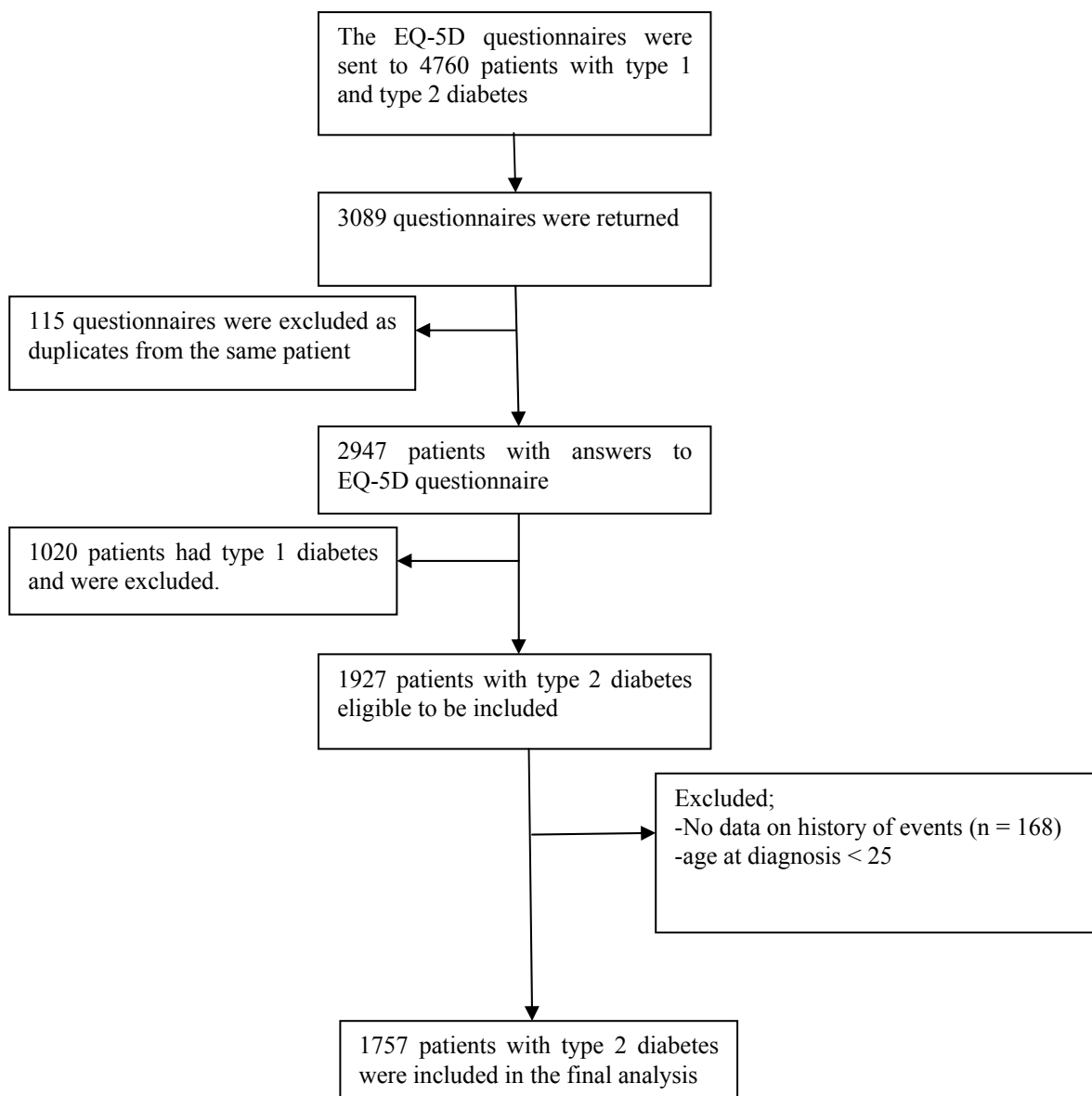


## Health Utilities of Type 2 Diabetes-Related Complications: A Cross-Sectional Study in Sweden

**Figure S1.** Flow diagram of sample selection in the study.



**Table S1.** Comparison of included and excluded subjects in terms of baseline characteristics.

Variable	Included (n = 1757)	Excluded (n = 170)	p Value of Difference
Age	66.1 (8.8)	64.0 (11.0)	0.004
Age at diagnosis	56.5 (9.4)	58.4 (11.8)	0.02
Diabetes duration	9.5 (7.1)	5.2 (7.9)	<0.001
Women (%)	43.3	48.2	0.21
BMI	30.0	30.0	0.71
EQ-5D index score	0.77 (0.3)	0.78 (0.3)	0.58

**Table S2.** Effect of diabetes-related complications on EQ-5D scores over time: results from the UK tariff.

Variable	Model 1	Model 2	Model 3	Model 4		
	Coefficients <sup>a</sup>	Coefficients <sup>b</sup>	Coefficients <sup>c</sup>	Equality of Coefficients <sup>d</sup>	Equality of Coefficients <sup>d</sup>	
Time since last macrovascular event						
Continuous (year)	0.0066 ***					
No event (ref)						
≤1 year			-0.0792 ***	0.18		
2–5 years			-0.1203 ***			
>5 years			-0.0517 **			
Time since last microvascular event						
Continuous (year)		0.0134 *				
No event (ref)						
≤1 year			-0.0978 *	0.91		
2–5 years			-0.0884			
>5 years			-0.0679			
Time since last AMI						
No event (ref)						
≤1 year					0.0674	0.13
2–5 years					0.0025	
>5 years					-0.0314	
Time since last stroke						
No event (ref)						
≤1 year					-0.0962 **	0.18
2–5 years					-0.2212 ***	
>5 years					-0.0708	
Time since last HF						
No event (ref)						
≤1 year					-0.0128	0.03
2–5 years					-0.2193 ***	
>5 years					-0.0296	

Table S2. Cont.

Variable	Model 1	Model 2	Model 3	Model 4	
	Coefficients <sup>a</sup>	Coefficients <sup>b</sup>	Coefficients <sup>c</sup>	Equality of Coefficients <sup>d</sup>	Equality of Coefficients <sup>d</sup>
Time since last NAIHD					
No event (ref)					
≤1 year					-0.0717 ** 0.80
2–5 years					-0.0622 *
>5 years					-0.0451
Time since last kidney disorders					
No event (ref)					
≤1 year					-0.1624 ** 0.50
2–5 years					-0.1629 **
>5 years					-0.0656
Time since last retinopathy					
No event (ref)					
≤1 year					-0.0329 0.64
2–5 years					0.0248
>5 years					-0.0224
R	0.04	0.17	0.06		0.08
N	425	87	1757		1757

\*, \*\*, \*\*\*: significant at 10%, 5%, and 1%, respectively. <sup>a</sup> Additionally adjusted for gender, age at diagnosis, BMI, duration of diabetes, treatment, and history of microvascular complications. <sup>b</sup> Additionally adjusted for gender, age at diagnosis, BMI, duration of diabetes, treatment, and history of macrovascular complications. <sup>c</sup> Additionally adjusted for gender, age at diagnosis, BMI, duration of diabetes, and treatment. <sup>d</sup> We used the *test* command in STATA to check if the estimated coefficients were significantly different.

**Table S3.** Factors associated with variation in EQ-5D score: results from the Swedish tariff.

Variable	Women		Men		Total	
	Model 1	Model 2	Model 1	Model 2	Model 1	Model 2
Constant	0.8692 ***	0.8666 ***	0.9048 ***	0.9050 ***	0.8991 ***	0.8974 ***
Female gender	NA	NA	NA	NA	-0.0266 ***	-0.0260 ***
Age at diagnosis	0.0004	0.0004	0.0008 *	0.0009 *	0.0006 *	0.0006 *
Diabetes duration	-0.0005	-0.0007	-0.0006	-0.0004	-0.0006	-0.0005
BMI	-0.0030 ***	-0.0030 ***	-0.0024 ***	-0.0023 ***	-0.0027 ***	-0.0027 ***
History of macrovascular events	-0.0338 **		-0.0478 ***		-0.0430 ***	
History of microvascular events	-0.0702 ***		-0.0118		-0.0348 **	
AMI history		-0.0003		-0.0182		-0.0119
Stroke history		-0.0551 ***		-0.0635 ***		-0.0590 ***
HF history		-0.0294		-0.0514 **		-0.0422 ***
NAIHD history		-0.0217		-0.0270 **		-0.0249 ***
Kidney disorders history		-0.1036 ***		0.0076		-0.0406*
Retinopathy history		0.0004		-0.0211		-0.0103
Treatment						
Diet (ref)						
OHA	0.0046	0.0068	-0.0080	-0.0084	-0.0009	0.0000
Insulin ± OHA	0.0038	0.0065	-0.0045	-0.0048	0.0009	0.0020
R-squared	0.06	0.07	0.06	0.07	0.06	0.07
N	760	760	997	997	1757	1757

\*, \*\*, \*\*\*: significant at 10%, 5%, and 1%, respectively.

**Table S4.** Effect of single and multiple events on EQ-5D score: results from the Swedish tariff.

Variable	Model 1		Model 2	
	Coefficients <sup>a</sup>	Equality of coefficients <sup>b</sup>	Coefficients <sup>a</sup>	Equality of coefficients <sup>b</sup>
Macrovascular events				
No (ref)				
Single	-0.0314 ***	0.12		
Multiple	-0.0505 ***			
Microvascular events				
No (ref)				
Single	-0.0311	0.84		
Multiple	-0.0364 **			
AMI				
No (ref)				
Single			-0.0113	0.97
Multiple			-0.0121	
Stroke				
No (ref)				
Single			-0.0460 ***	0.05
Multiple			-0.1217 ***	
NAIHD				
No (ref)				
Single			-0.0035	0.05
Multiple			-0.0352 ***	

\*\*, \*\*\*: significant at 5%, and 1%, respectively. <sup>a</sup> Additionally adjusted for gender, age at diagnosis, BMI, duration of diabetes, treatment, history of heart failure, retinopathy, and kidney disorders. <sup>b</sup> We used the test command in STATA to check if the estimated coefficients were significantly different.

**Table S5.** Effect of diabetes-related complications on EQ-5D scores over time: results from the Swedish tariff.

Variable	Model 1	Model 2	Model 3		Model 4	
	Coefficients <sup>a</sup>	Coefficients <sup>b</sup>	Coefficients <sup>c</sup>	Equality of coefficients <sup>d</sup>	Coefficients <sup>c</sup>	Equality of coefficients <sup>d</sup>
Time since last macrovascular event	0.0032 ***					
Continuous (year)						
No event (ref)						
≤1 year			-0.0479 ***	0.16		
2–5 years			-0.0556 ***			
>5 years			-0.0283 **			
Time since last microvascular event		0.0042				
Continuous (year)						
No event (ref)						
≤1 year			-0.0239	0.76		
2–5 years			-0.0354			
>5 years			-0.0475 **			
Time since last AMI						
No event (ref)						
≤1 year					0.0110	0.42
2–5 years					0.0084	
>5 years					-0.0135	
Time since last stroke						
No event (ref)						
≤1 year					-0.0696 ***	0.44
2–5 years					-0.0848 ***	
>5 years					-0.0429 **	

Table S5. Cont.

Variable	Model 1	Model 2	Model 3		Model 4	
	Coefficients <sup>a</sup>	Coefficients <sup>b</sup>	Coefficients <sup>c</sup>	Equality of coefficients <sup>d</sup>	Coefficients <sup>c</sup>	Equality of coefficients <sup>d</sup>
Time since last HF						
No event (ref)						
≤1 year					-0.0114	0.01
2–5 years					-0.1123 ***	
>5 years					-0.0196	
Time since last NAIHD						
No event (ref)						
≤1 year					-0.0290 **	0.88
2–5 years					-0.0318 **	
>5 years					-0.0224 *	
Time since last kidney disorders						
No event (ref)						
≤1 year					-0.0459	0.94
2–5 years					-0.0615 *	
>5 years					-0.0465	
Time since last retinopathy						
No event (ref)						
≤1 year					0.0063	0.52
2–5 years					-0.0046	
>5 years					-0.0358	
R	0.05	0.17	0.07		0.09	
N	425	87	1757		1757	

\*, \*\*, \*\*\*: significant at 10%, 5%, and 1%, respectively. <sup>a</sup> Additionally adjusted for gender, age at diagnosis, BMI, duration of diabetes, treatment, and history of microvascular complications. <sup>b</sup> Additionally adjusted for gender, age at diagnosis, BMI, duration of diabetes, treatment, and history of macrovascular complications. <sup>c</sup> Additionally adjusted for gender, age at diagnosis, BMI, duration of diabetes, and treatment. <sup>d</sup> We used the *test* command in STATA to check if the estimated coefficients were significantly different.