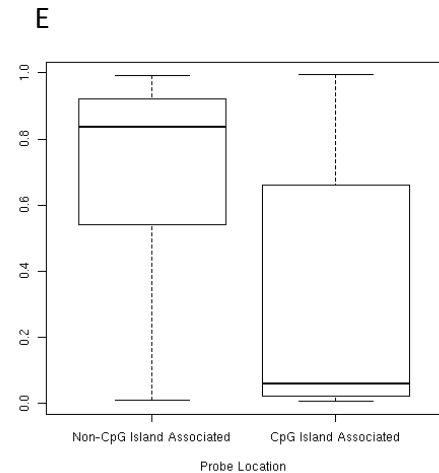
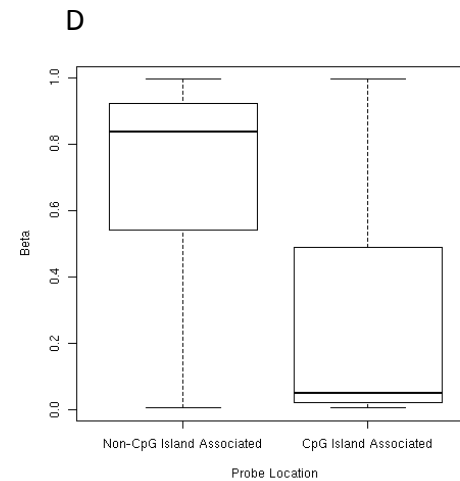
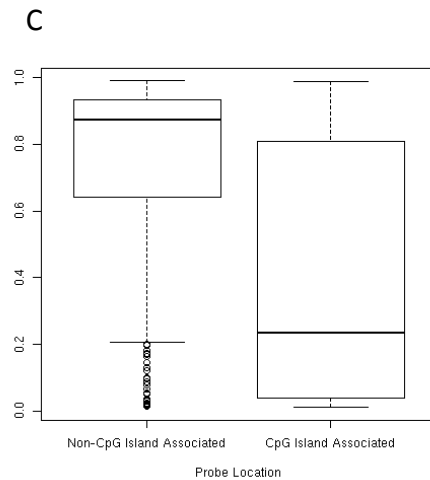
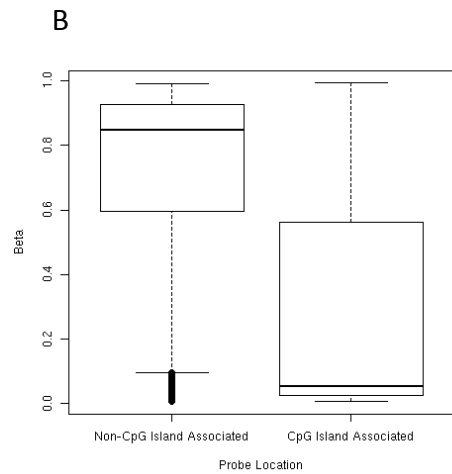
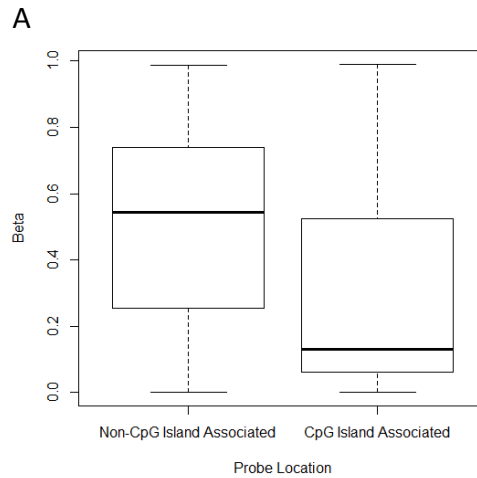
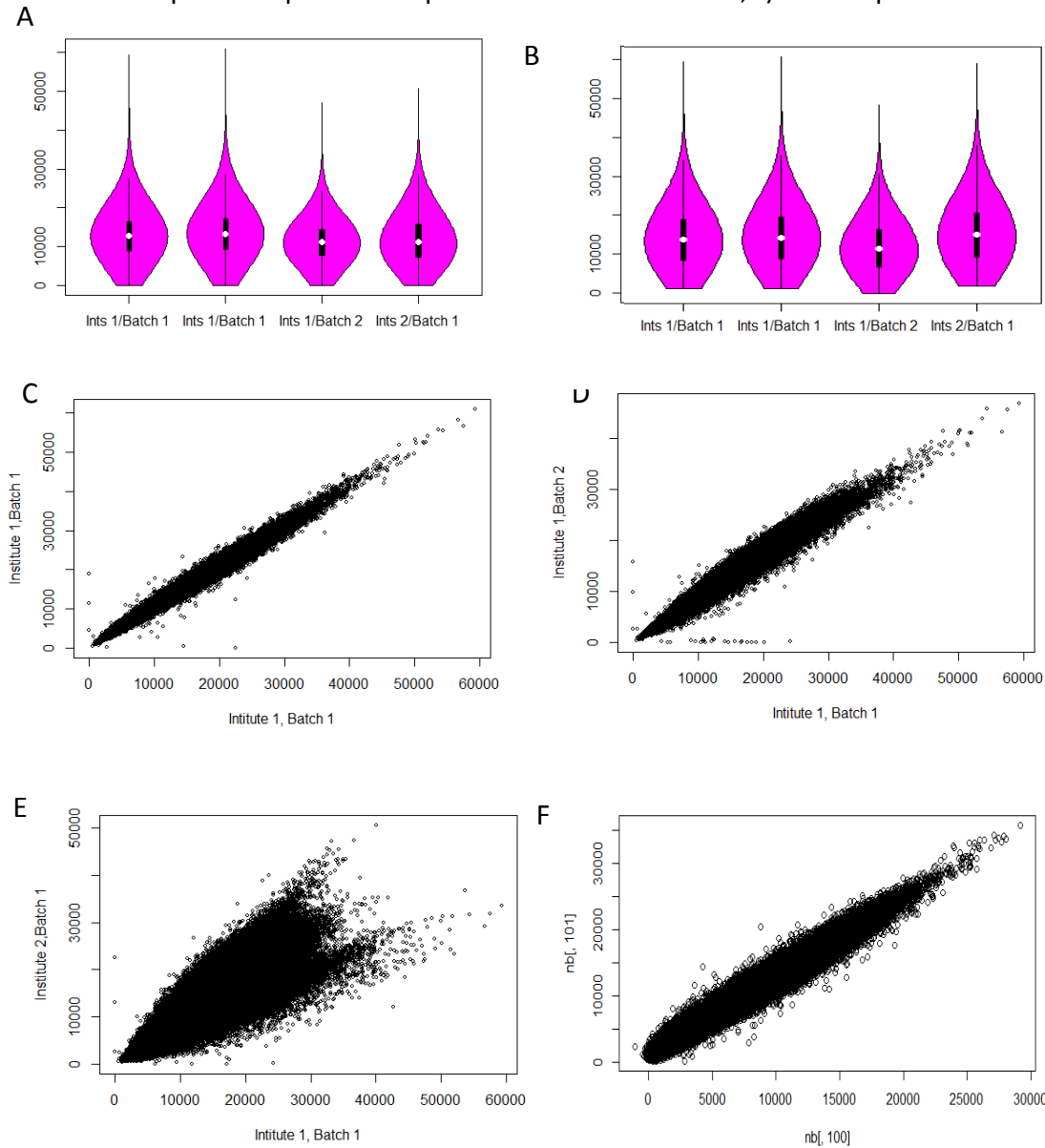


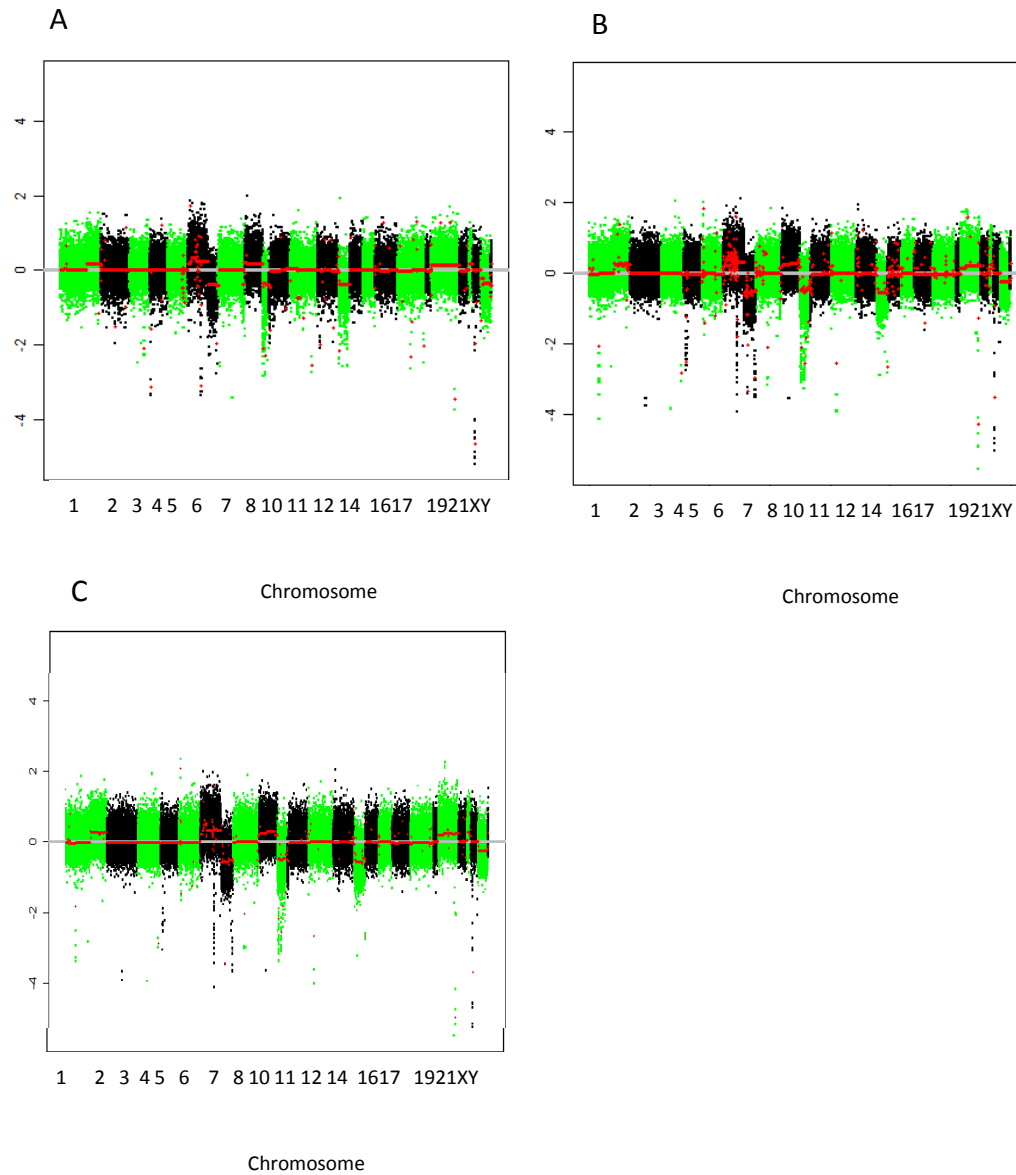
Supplementary Figure 1. Boxplot of probe distribution in regions of A) amplification, B) Deletion, C) Loss, D) Normal, E) Gain.



Supplementary Figure 2. Batch correction of replicate samples. A) Violin plot of Infinium array intensities for replicate samples across multiple batches in institutes. B) Violin plot of ComBat batch corrected intensities, C) Scatter plot of replicate samples from the same batch and institute, D) scatter plot of replicate sample across batches from the same institute, E) Scatter plot of replicate samples from different sites, f) Scatter plot of batch corrected intensities from different sites.



Supplementary Figure 3. CN profiles comparing Infinium probe type. Copy number profiles generated using DNACopy from A) Type I, B) TypeII and C) combined.



Supplementary Figure 4. Q-PCR validation of Infinium specific deletions in a deleted and non deleted sample. A) 9q22 deletion of *PTCH1*, compared to a reference of B-Actin and an internal Chr 9p region. B) Q-PCR validation of *GSTT1* deletion, compared to a reference of B-Actin. Reactions were performed in triplicate, Error bars are shown in red.

