

1 **Supplementary material**

2

Mixture no.	1	2	3	4	5	6	7	8	9	10	11
B.t (%)	100	99	97	90	75	50	25	10	3	1	0
C.g (%)	0	1	3	10	25	50	75	90	97	99	100

3

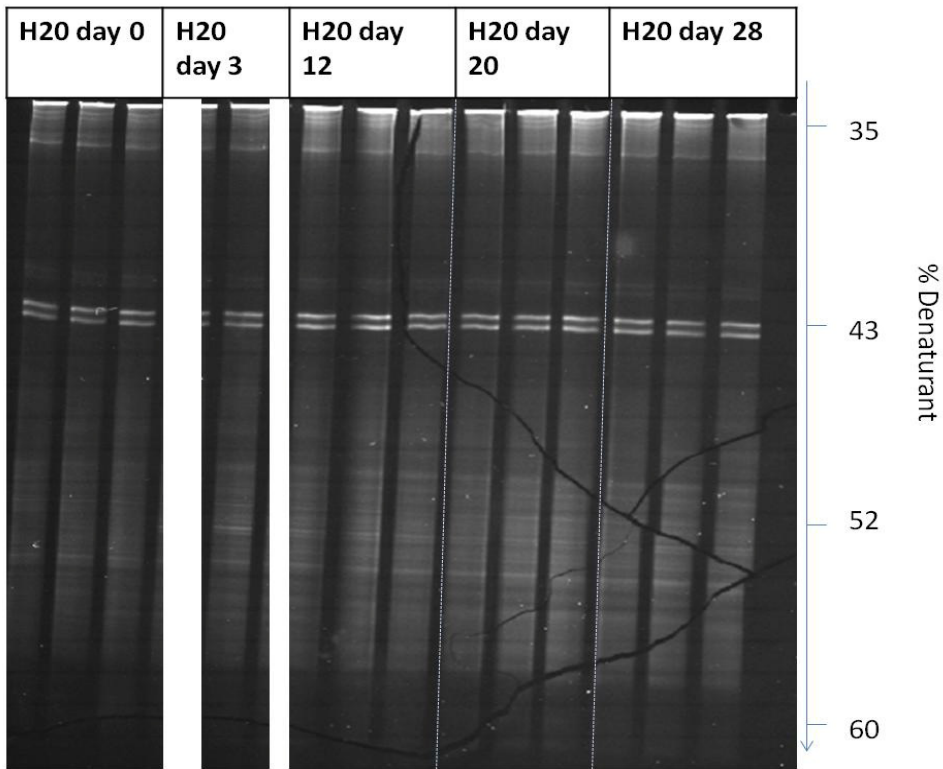
4 Supplementary figure S1. Ratios of 16S rRNA gene mixtures used in the HRM sensitivity
5 assay. Bacteria used were *Bacillus thuringiensis* (B.t) and *Corynebacterium glutamicum*
6 (C.g).

7

8

9

10



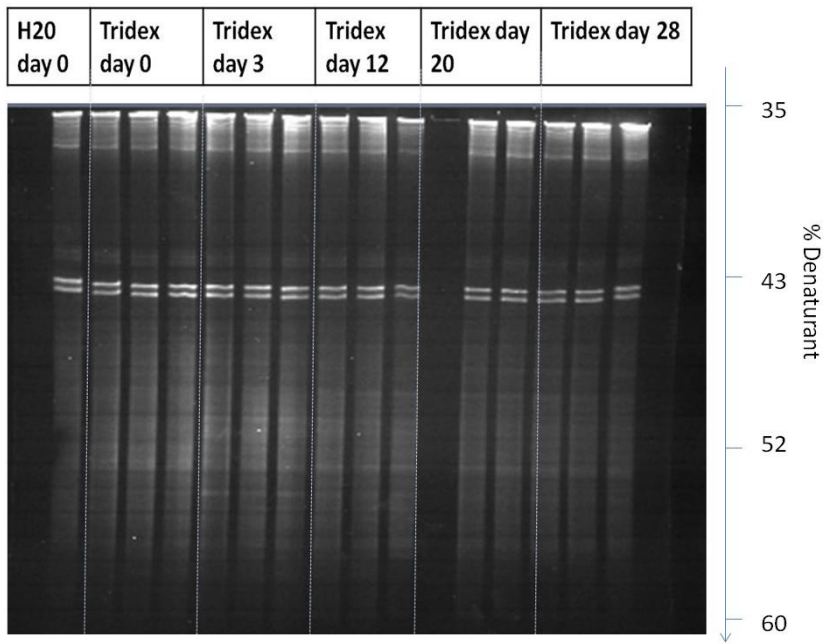
11

12 Supplementary figure S2. DGGE gel loaded with PCR amplified 16S rRNA gene fragments
 13 of “H₂O day 0” control DNA samples. The DNA of two of the “H₂O day 3” samples was not
 14 extracted successfully and is therefore not included.

15

16

17



18

19 Supplementary figure S3. DGGE gel loaded with PCR amplified 16S rRNA gene fragments
 20 of Tridex DNA samples. “H₂O day 0” control sample in far left lane is used as a standard. The
 21 DNA of one of the “Tridex day 20” samples was not extracted successfully and is therefore
 22 not included.

23

24