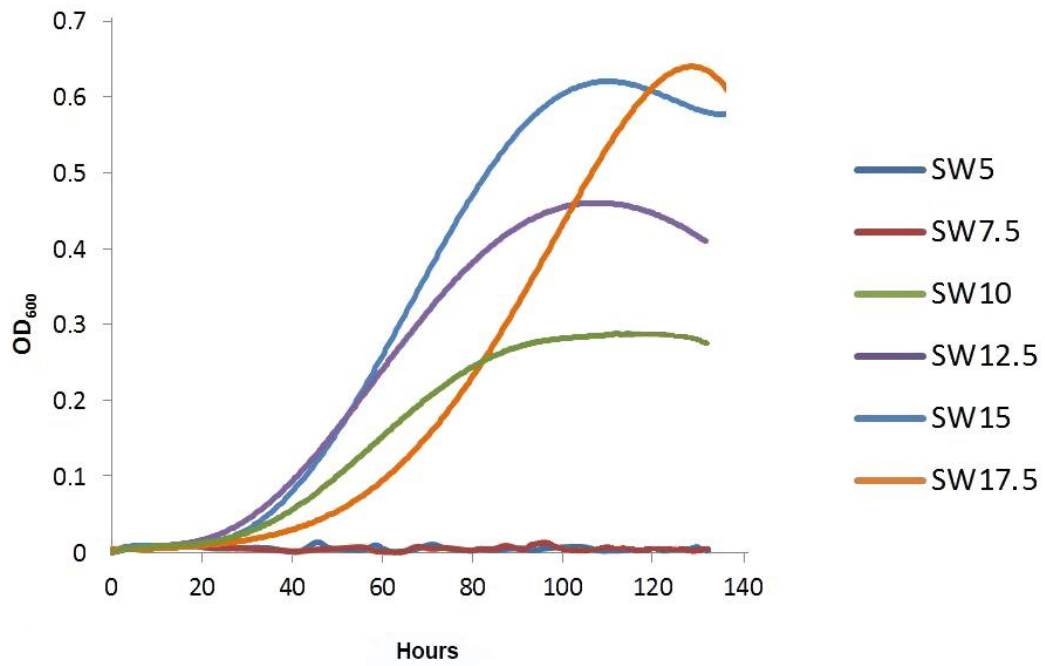
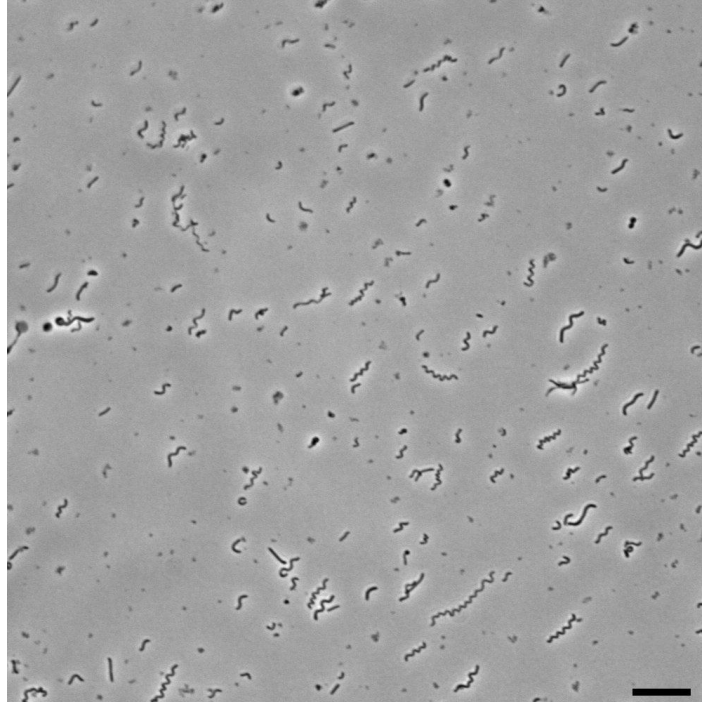


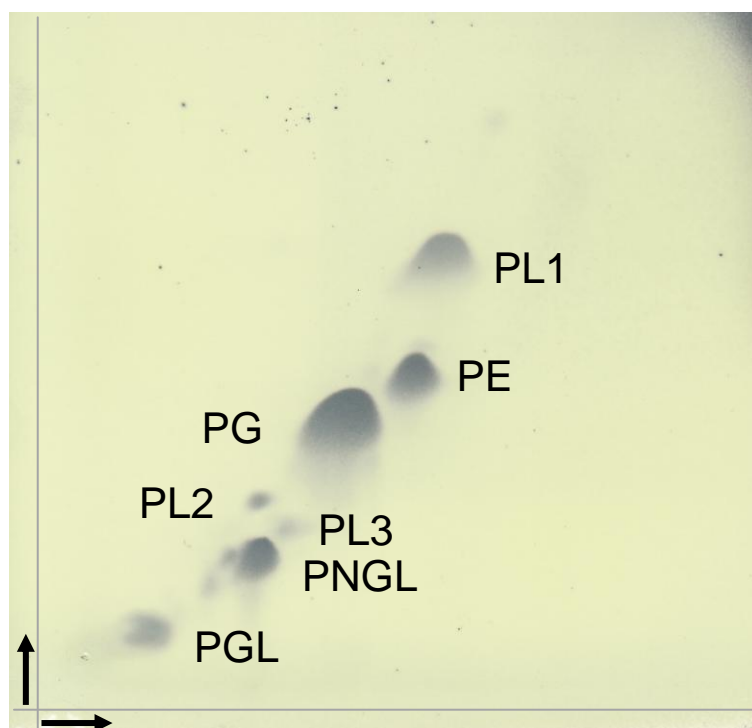
Supplementary Figure S1. Recruitment of *Spiribacter salinus* M19-40^T genome (1739487 bp) against metagenomes of two different ponds of different salinities from Santa Pola saltern. **A**, metagenome from 33 % salinity pond; **B**, metagenome from 37 % salinity pond. A restrictive cut-off of 95% of identity and at least 50 bp alignment length was used.



Supplementary Figure S2. Growth curves of *Spiribacter salinus* M19-40^T on SM liquid medium at different salt concentrations (from 5 to 17.5 % salts).



Supplementary Figure S3. Phase-contrast micrograph of cells of *Spiribacter salinus* M19-40^T grown on SM15 liquid medium. Bar, 10 μm .



Supplementary Figure S4. Polar lipids composition of *Spiribacter salinus* M19-40^T. PL1-3, Phospholipids; PG, Phosphatidylglycerol; PE, Phosphatidylethanolamine; PNGL, Phosphoaminoglycolipid; PGL, Phosphoglycolipid (atypical sugar). Direction of development: first dimension, horizontal; second dimension, vertical. The origin is in the bottom left-hand corner.