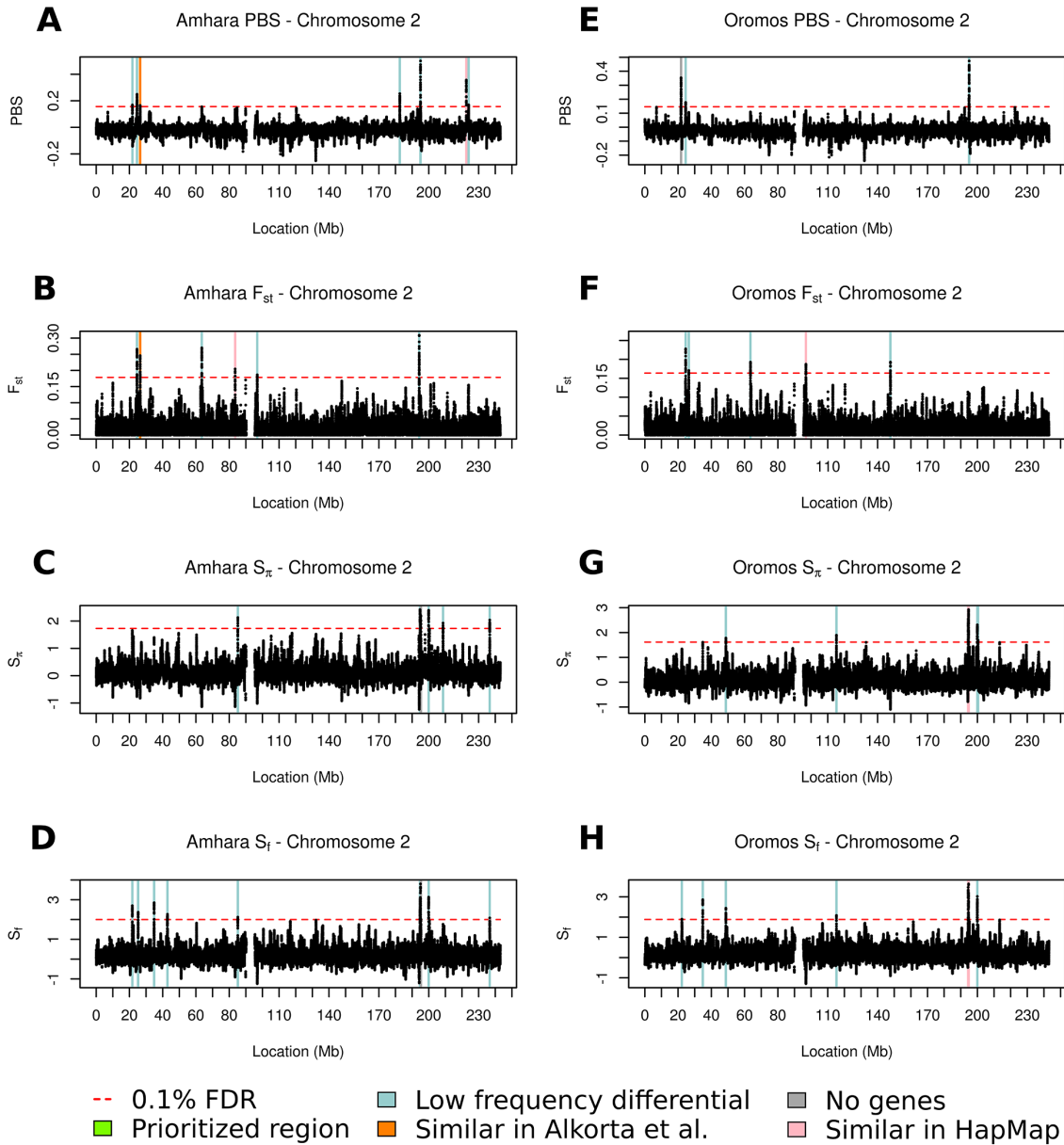
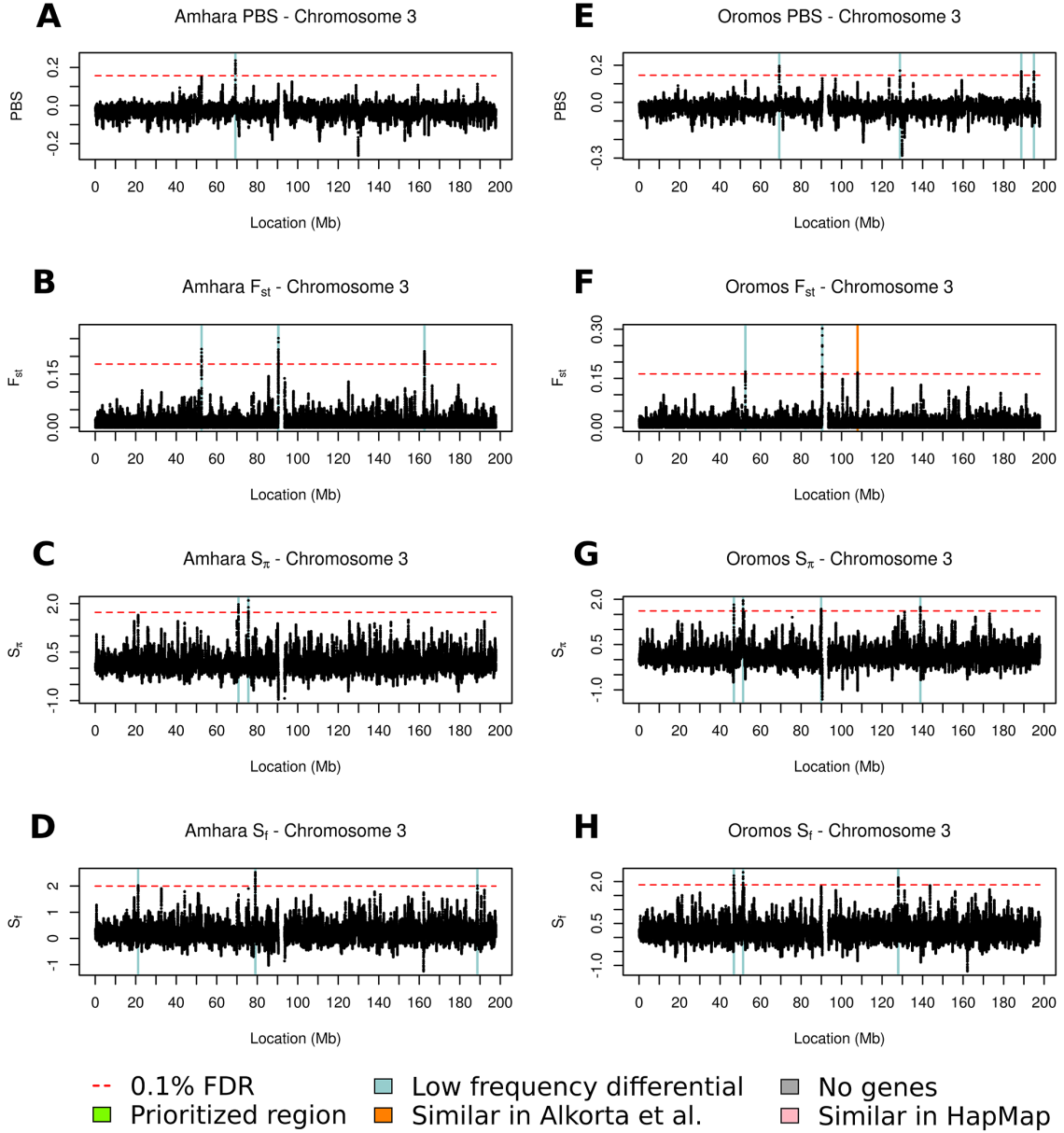


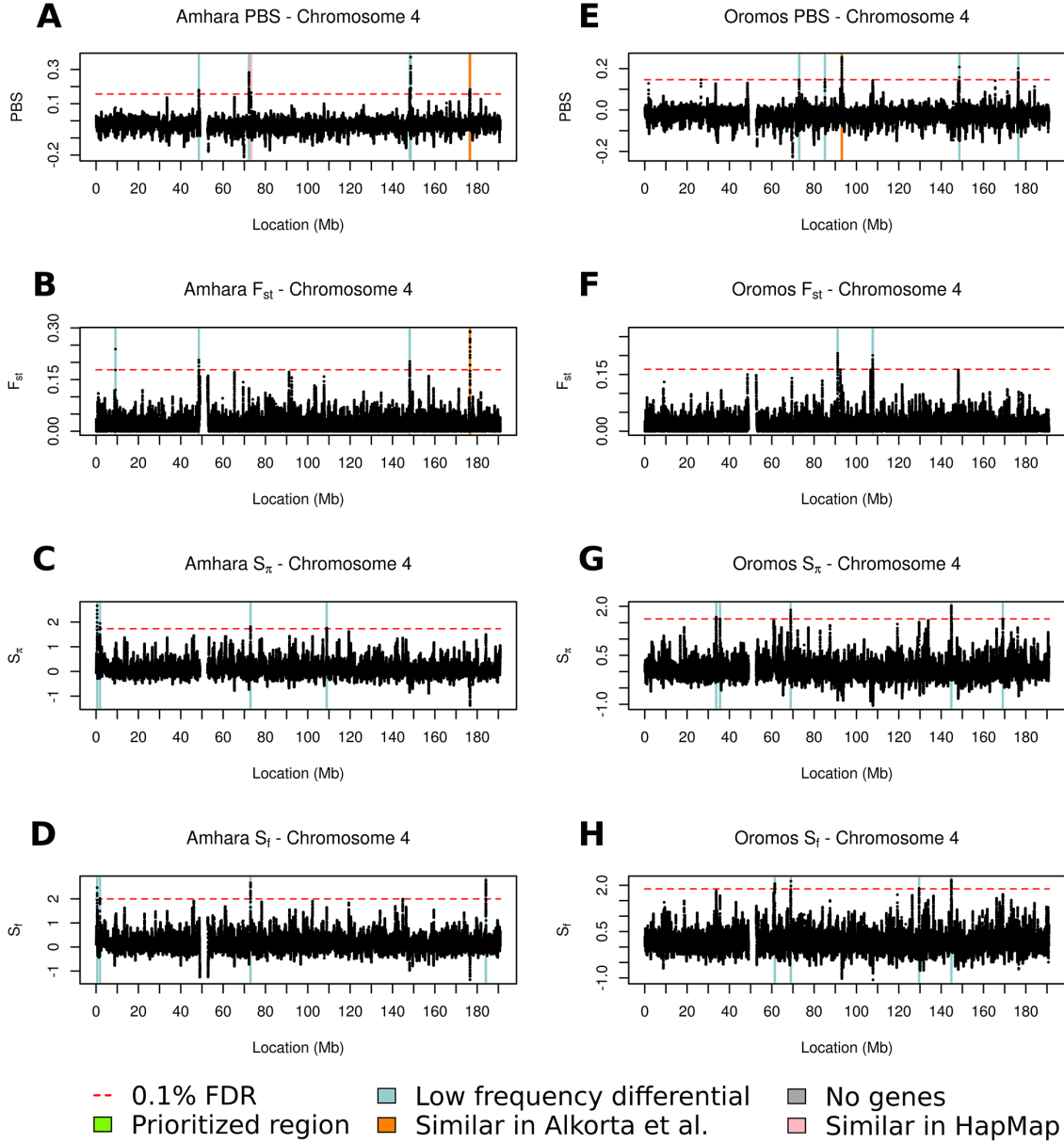
Chromosome 1. Test statistic values in the Amhara (A-D) and Oromos (E-H) populations. The tests shown are PBS (A, E), F_{st} (B, F), S_{π} (C, G), and S_f (D, H). The four filters that were used to shortlist the regions are color-coded. Regions above the 0.1% FDR that passed all filters are shown in green.



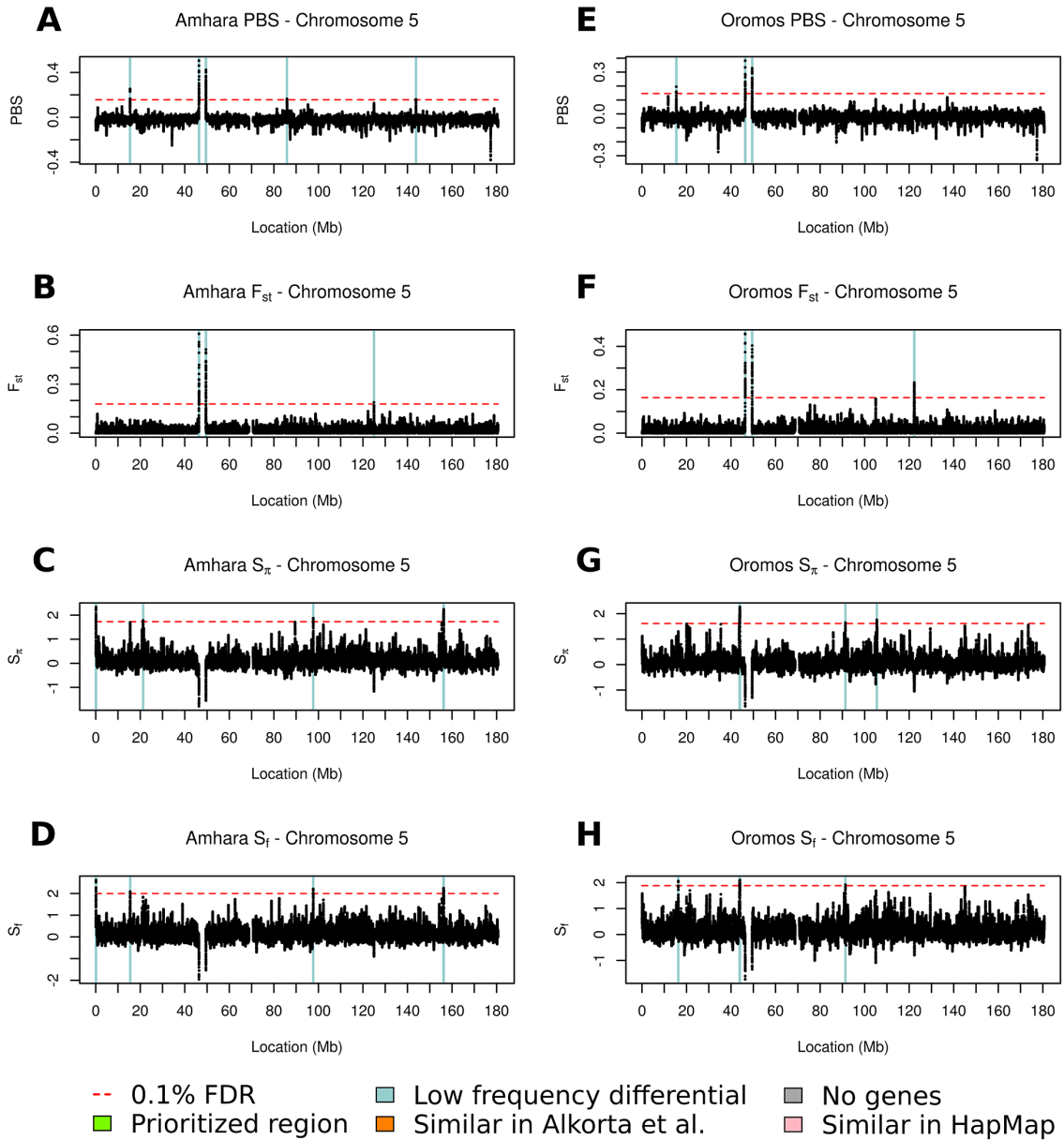
Chromosome 2. Test statistic values in the Amhara (A-D) and Oromos (E-H) populations. The tests shown are PBS (A, E), F_{st} (B, F), S_{π} (C, G), and S_f (D, H). The four prioritization filters that were used to shortlist the regions are color-coded. Regions above the 0.1% FDR that passed all filters are shown in green.



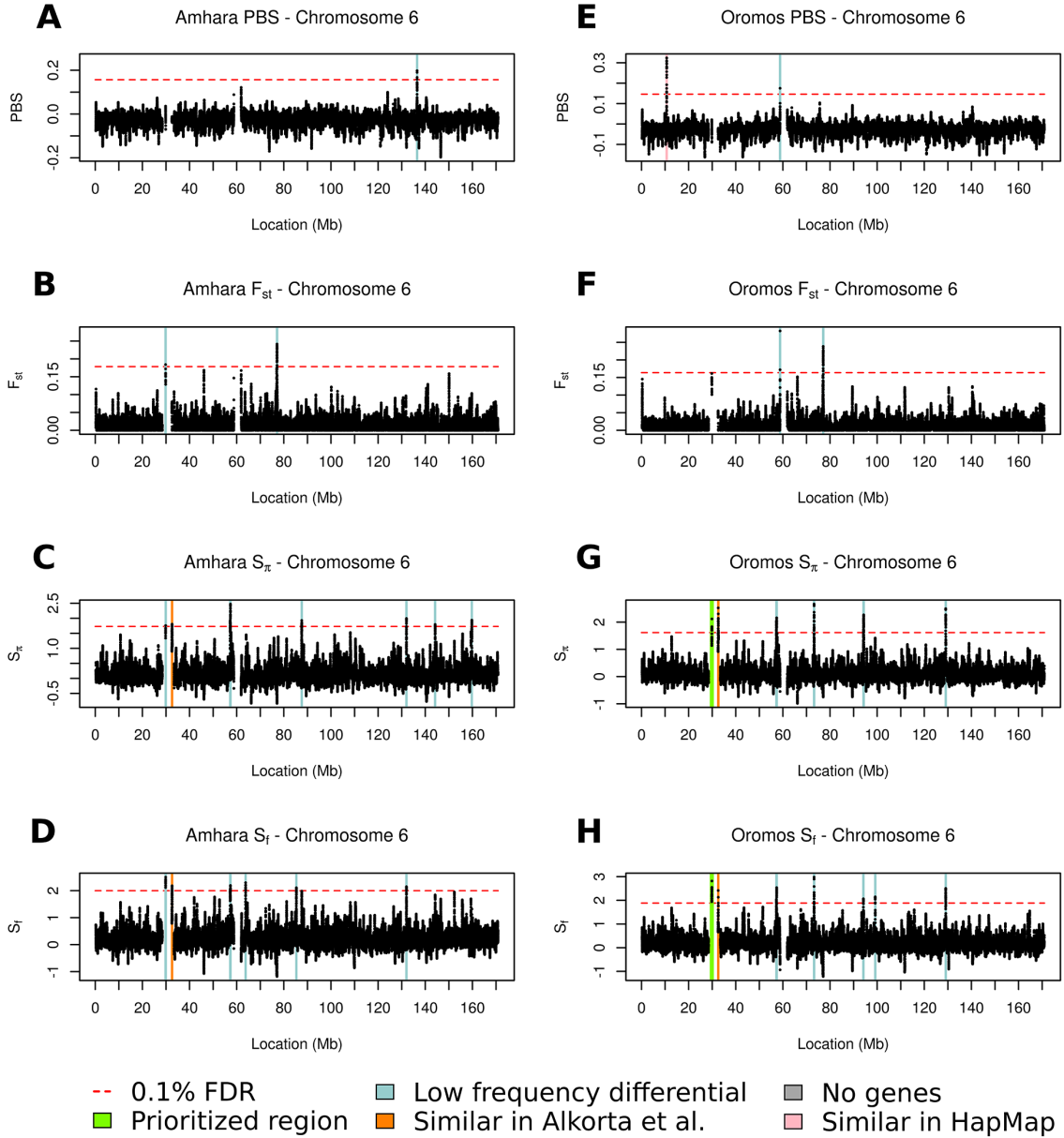
Chromosome 3. Test statistic values in the Amhara (A-D) and Oromos (E-H) populations. The tests shown are PBS (A, E), F_{st} (B, F), S_{π} (C, G), and S_f (D, H). The four prioritization filters that were used to shortlist the regions are color-coded. Regions above the 0.1% FDR that passed all filters are shown in green.



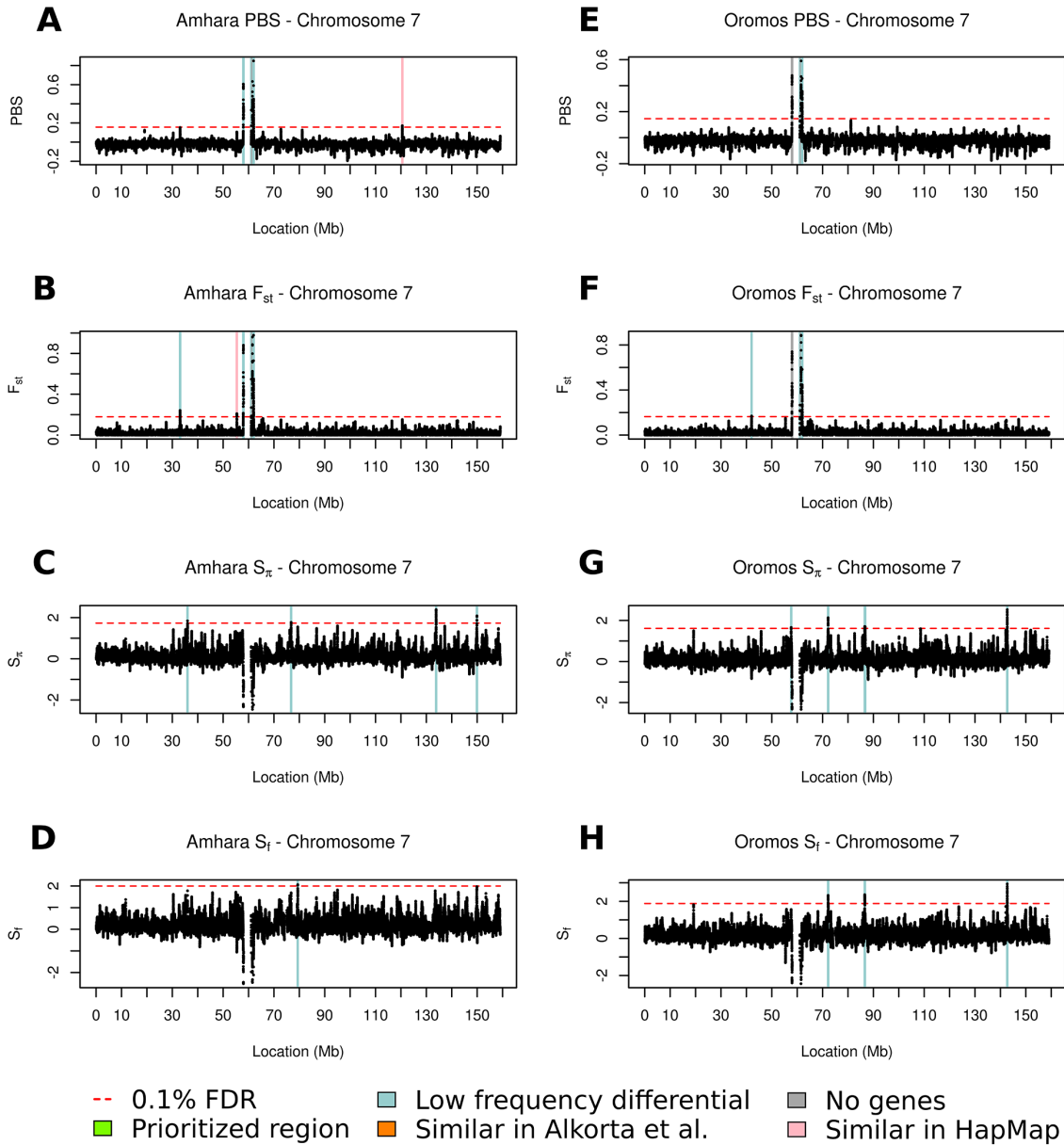
Chromosome 4. Test statistic values in the Amhara (A-D) and Oromos (E-H) populations. The tests shown are PBS (A, E), F_{st} (B, F), S_{π} (C, G), and S_f (D, H). The four prioritization filters that were used to shortlist the regions are color-coded. Regions above the 0.1% FDR that passed all filters are shown in green.



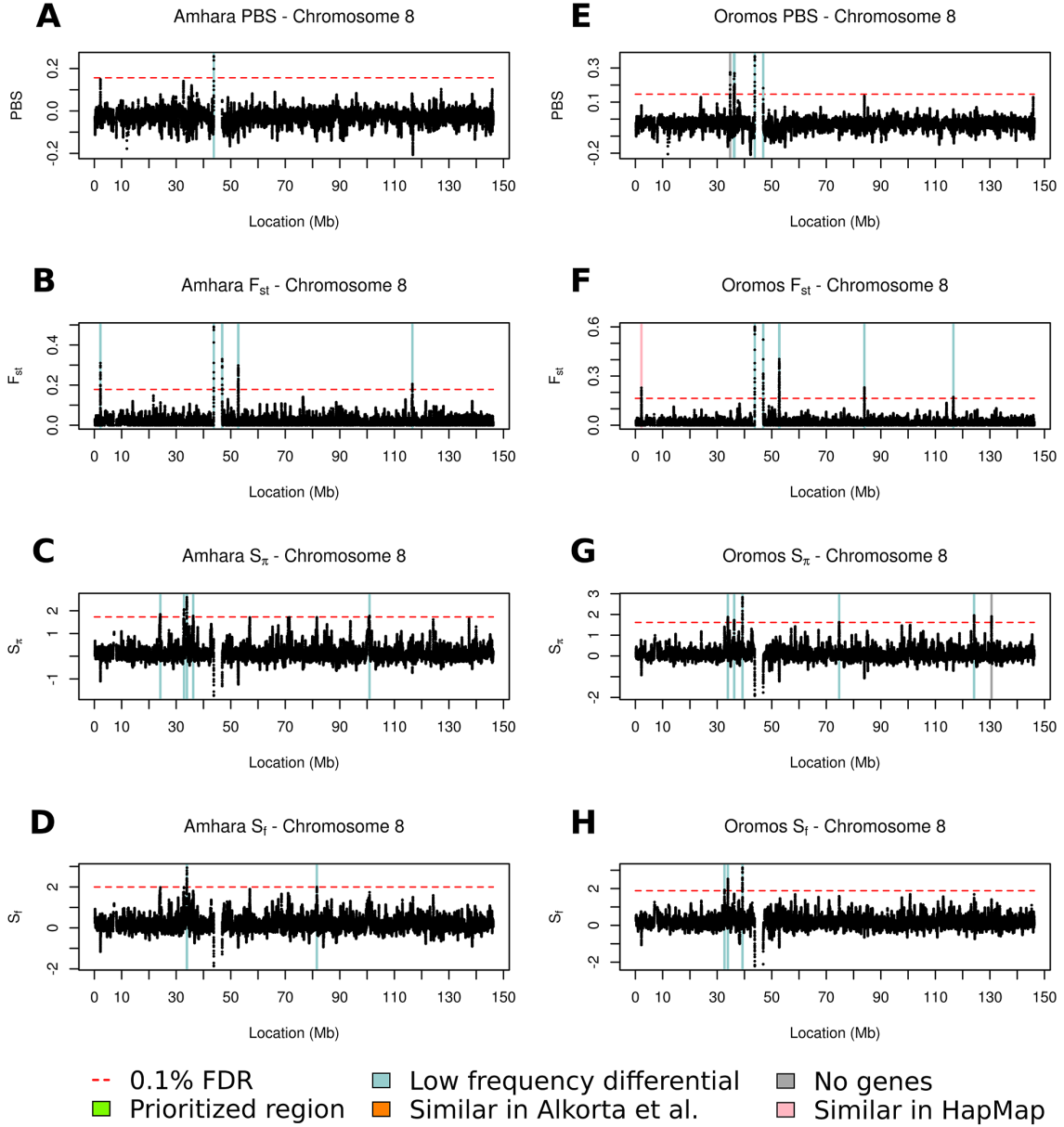
Chromosome 5. Test statistic values in the Amhara (A-D) and Oromos (E-H) populations. The tests shown are PBS (A, E), F_{st} (B, F), S_{π} (C, G), and S_f (D, H). The four prioritization filters that were used to shortlist the regions are color-coded. Regions above the 0.1% FDR that passed all filters are shown in green.



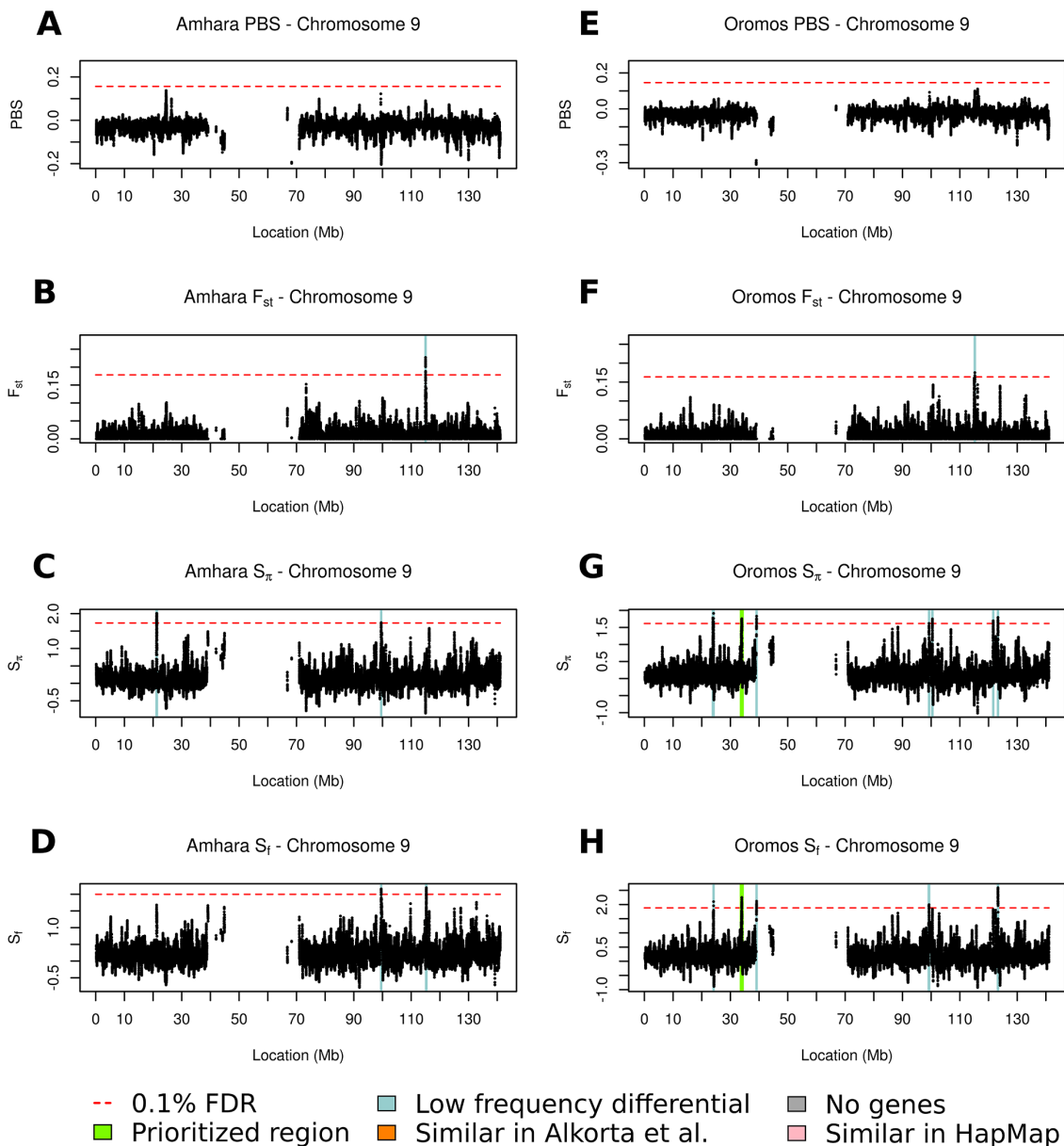
Chromosome 6. Test statistic values in the Amhara (A-D) and Oromos (E-H) populations. The tests shown are PBS (A, E), F_{st} (B, F), S_{π} (C, G), and S_f (D, H). The four prioritization filters that were used to shortlist the regions are color-coded. Regions above the 0.1% FDR that passed all filters are shown in green. Specifically, the green region in the Oromos vs. LWK S_{π} and S_f statistics, position 29.8M, contains four genes (*HLA-G*, *HLA-H*, *HCG2P7*, and *HCG4P6*) and has S_{π} and S_f values of 2.12 and 2.82, respectively.



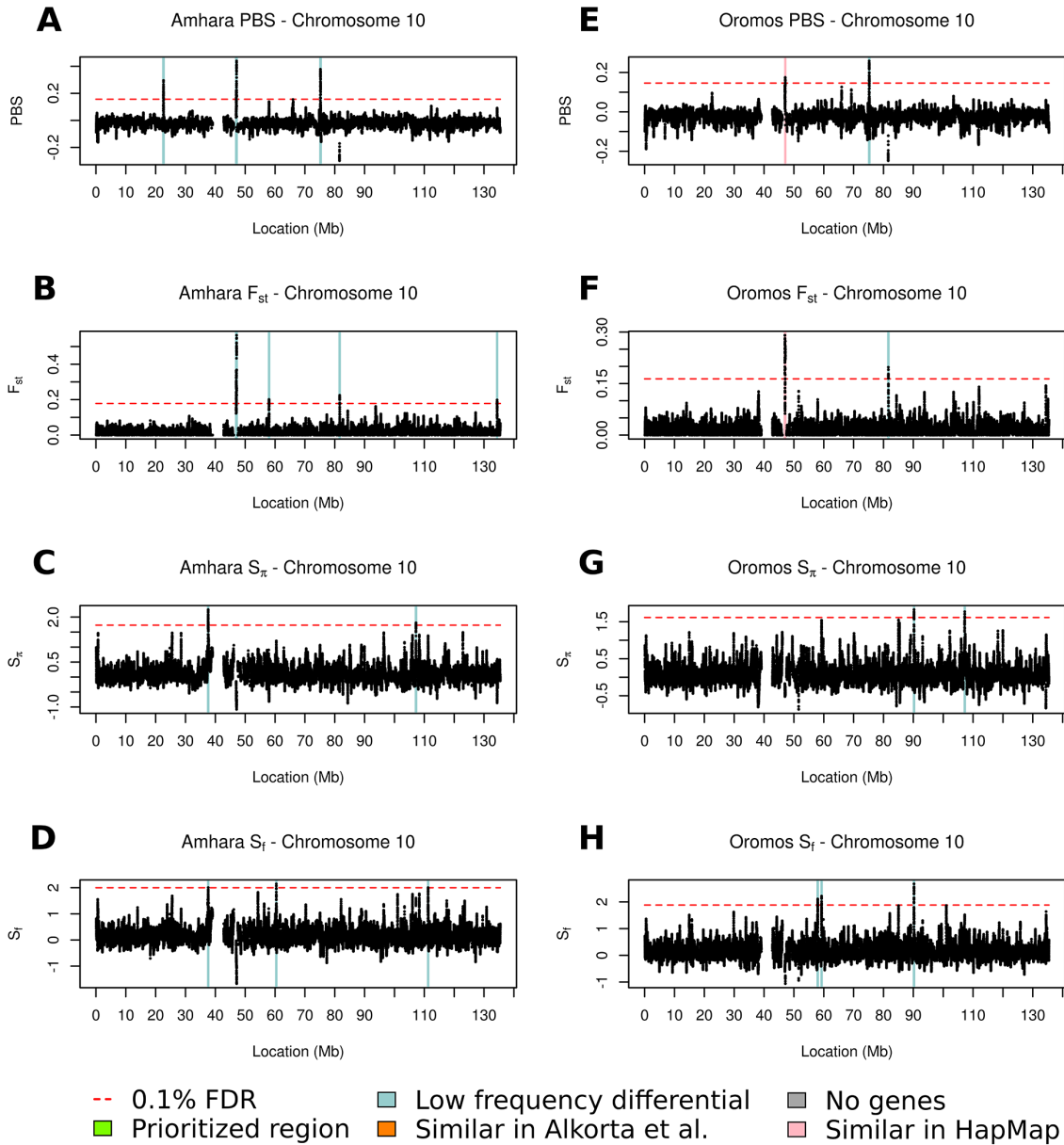
Chromosome 7. Test statistic values in the Amhara (A-D) and Oromos (E-H) populations. The tests shown are PBS (A, E), F_{st} (B, F), S_{π} (C, G), and S_f (D, H). The four prioritization filters that were used to shortlist the regions are color-coded. Regions above the 0.1% FDR that passed all filters are shown in green.



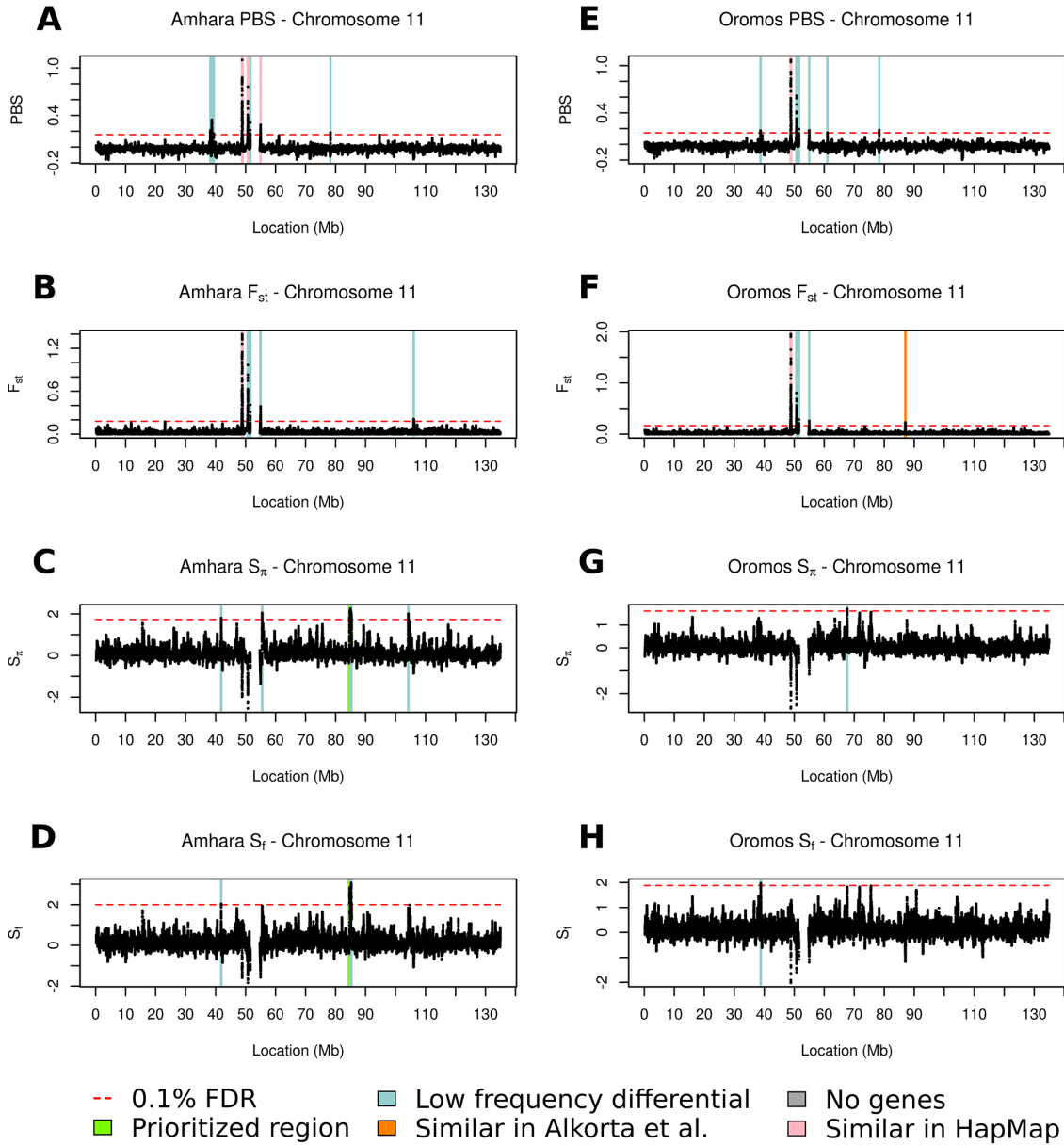
Chromosome 8. Test statistic values in the Amhara (A-D) and Oromos (E-H) populations. The tests shown are PBS (A, E), F_{st} (B, F), S_{π} (C, G), and S_f (D, H). The four prioritization filters that were used to shortlist the regions are color-coded. Regions above the 0.1% FDR that passed all filters are shown in green.



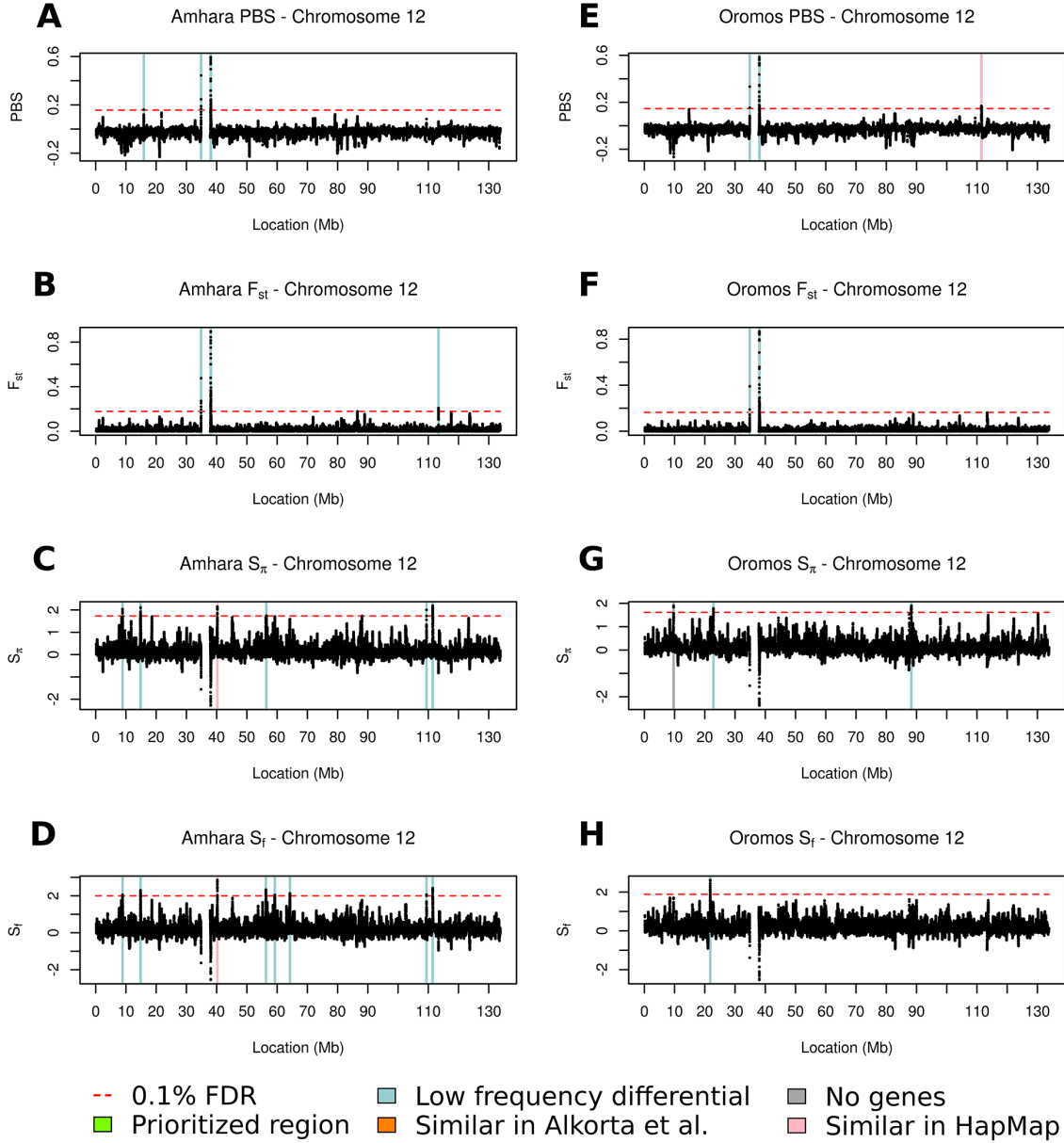
Chromosome 9. Test statistic values in the Amhara (A-D) and Oromos (E-H) populations. The tests shown are PBS (A, E), F_{st} (B, F), S_{π} (C, G), and S_f (D, H). The four prioritization filters that were used to shortlist the regions are color-coded. Regions above the 0.1% FDR that passed all filters are shown in green. Specifically, the green region in the Oromos vs. LWK S_{π} and S_f statistics, position 34M, contains four genes (*UBE2R2*, *UBAP2*, *SNORD121B*, and *SNORD121A*) and has S_{π} and S_f values of 1.76 and 2.25, respectively.



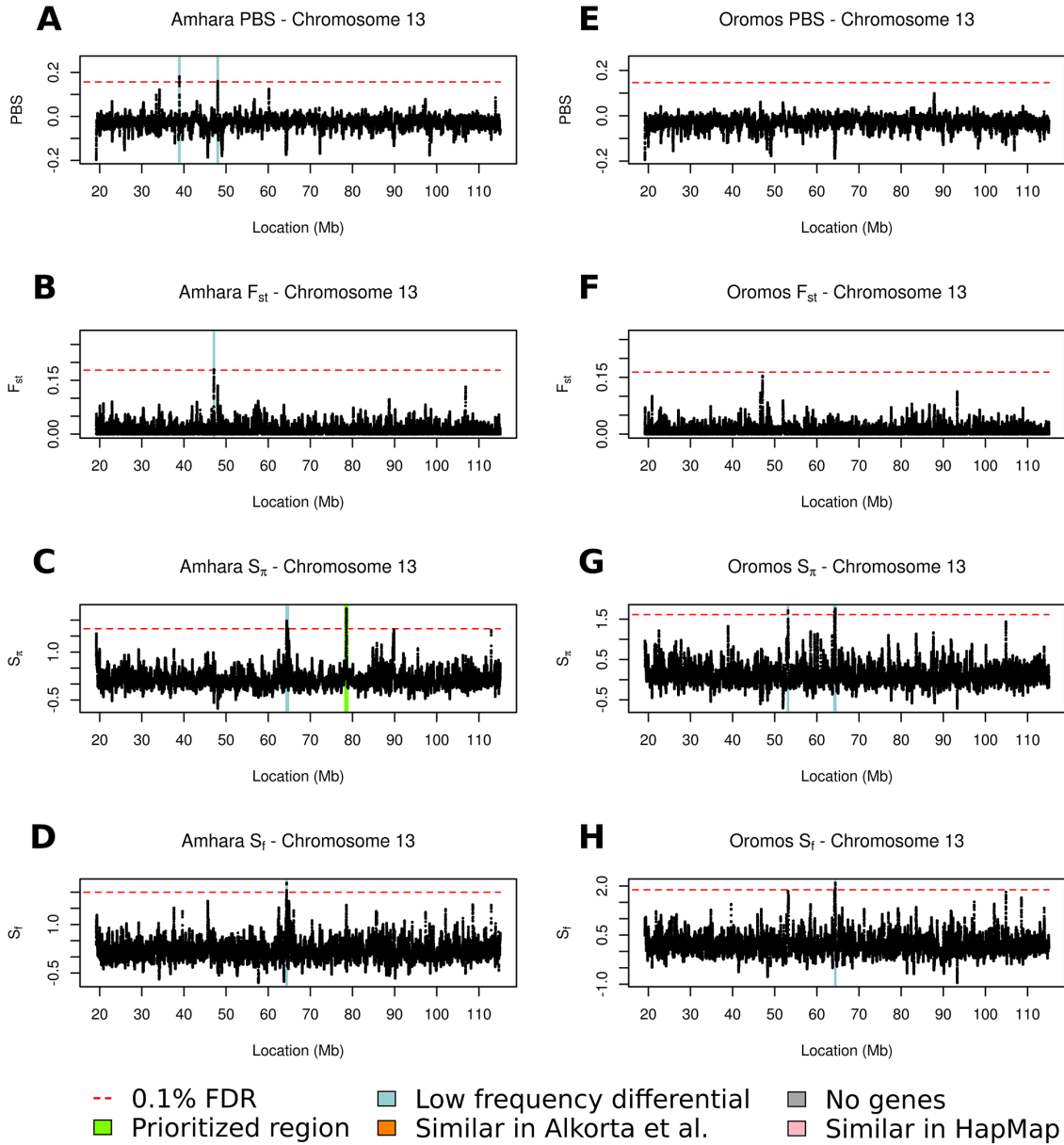
Chromosome 10. Test statistic values in the Amhara (A-D) and Oromos (E-H) populations. The tests shown are PBS (A, E), F_{st} (B, F), S_{π} (C, G), and S_f (D, H). The four prioritization filters that were used to shortlist the regions are color-coded. Regions above the 0.1% FDR that passed all filters are shown in green.



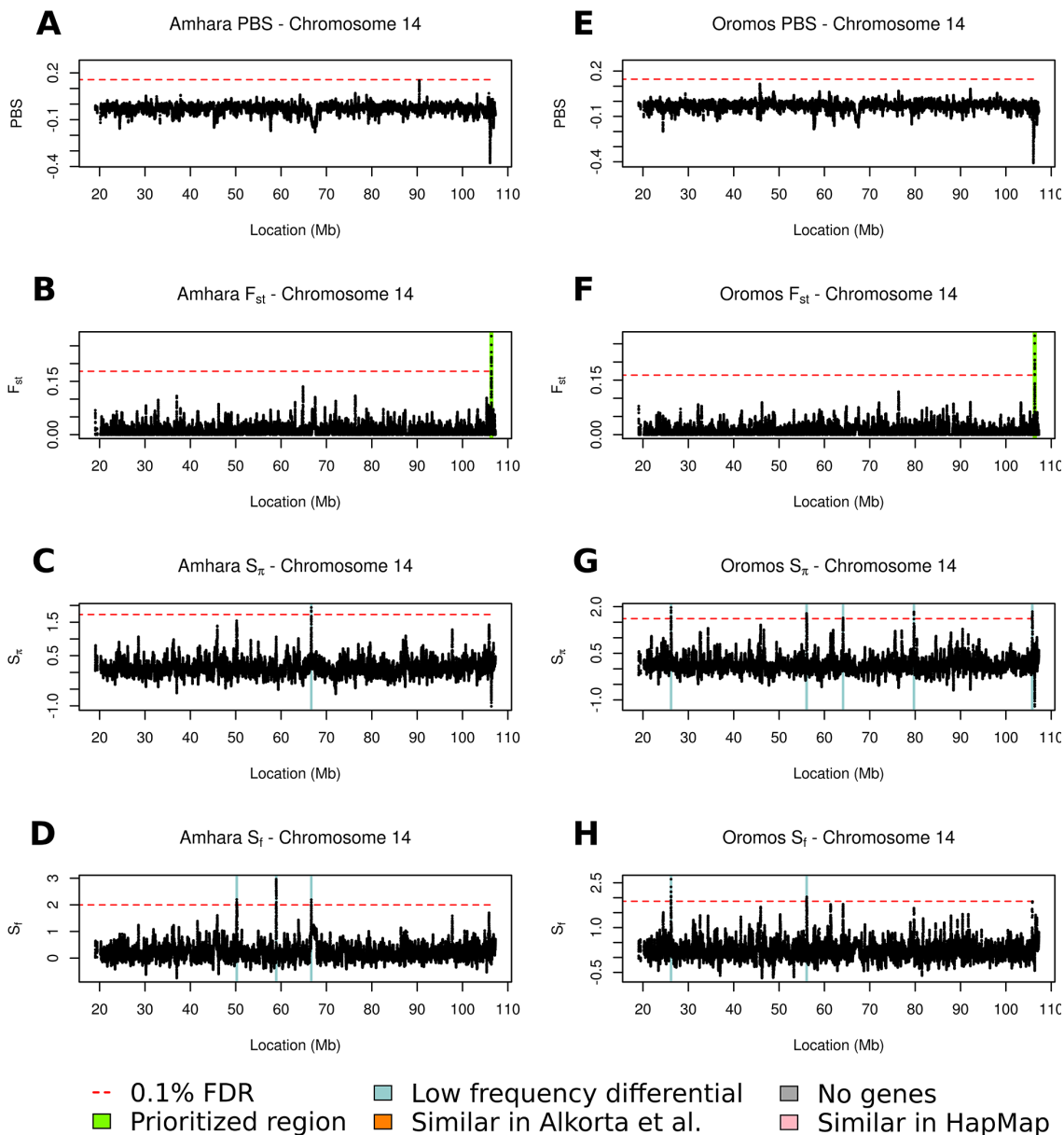
Chromosome 11. Test statistic values in the Amhara (A-D) and Oromos (E-H) populations. The tests shown are PBS (A, E), F_{st} (B, F), S_{π} (C, G), and S_f (D, H). The four prioritization filters that were used to shortlist the regions are color-coded. Regions above the 0.1% FDR that passed all filters are shown in green. Specifically, the green region in the Amhara vs. LWK S_{π} and S_f statistics, position 84.7M, contains one gene (*DLG2*) and has S_{π} and S_f values of 2.16 and 2.85, respectively.



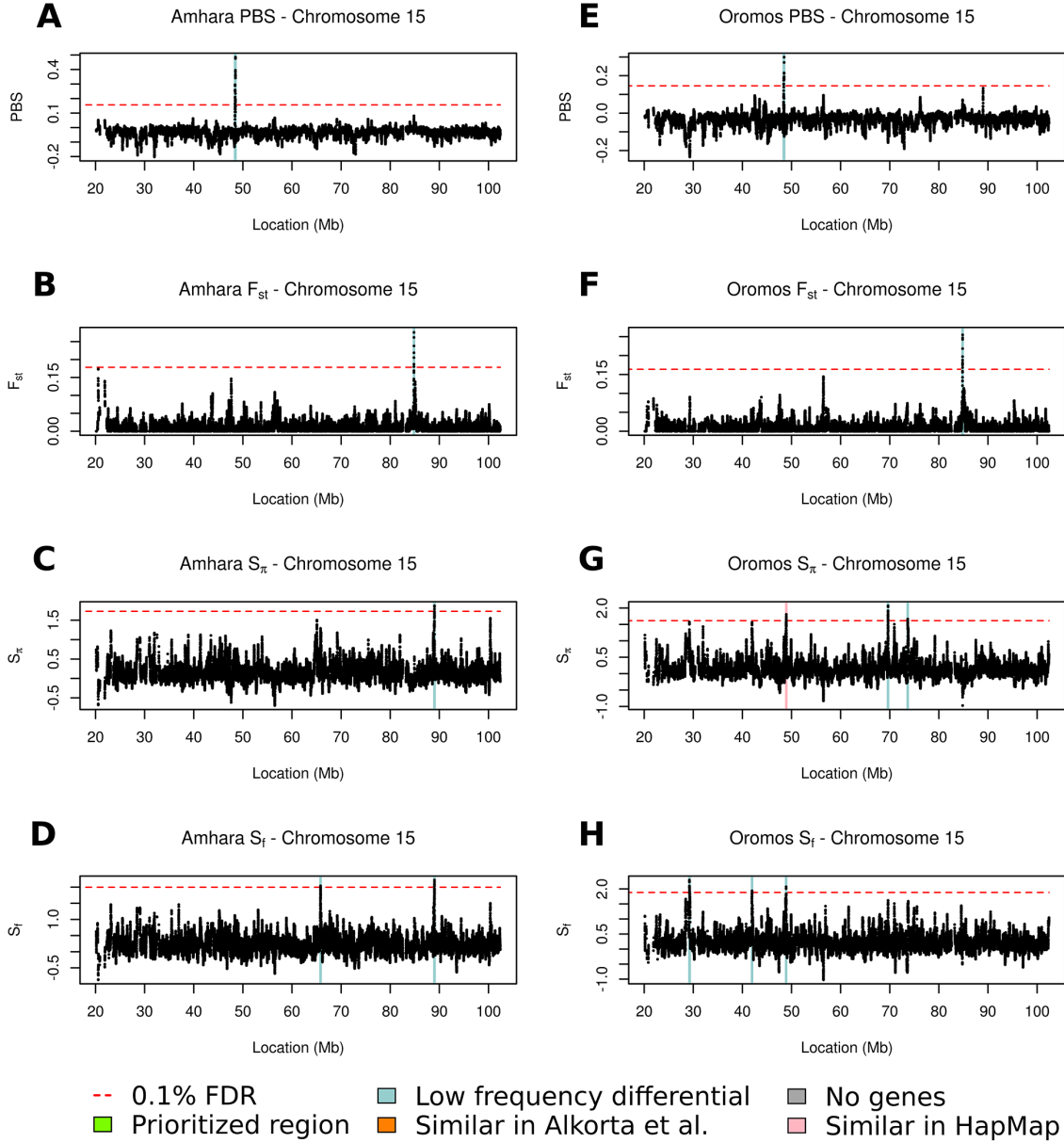
Chromosome 12. Test statistic values in the Amhara (A-D) and Oromos (E-H) populations. The tests shown are PBS (A, E), F_{st} (B, F), S_{π} (C, G), and S_f (D, H). The four prioritization filters that were used to shortlist the regions are color-coded. Regions above the 0.1% FDR that passed all filters are shown in green.



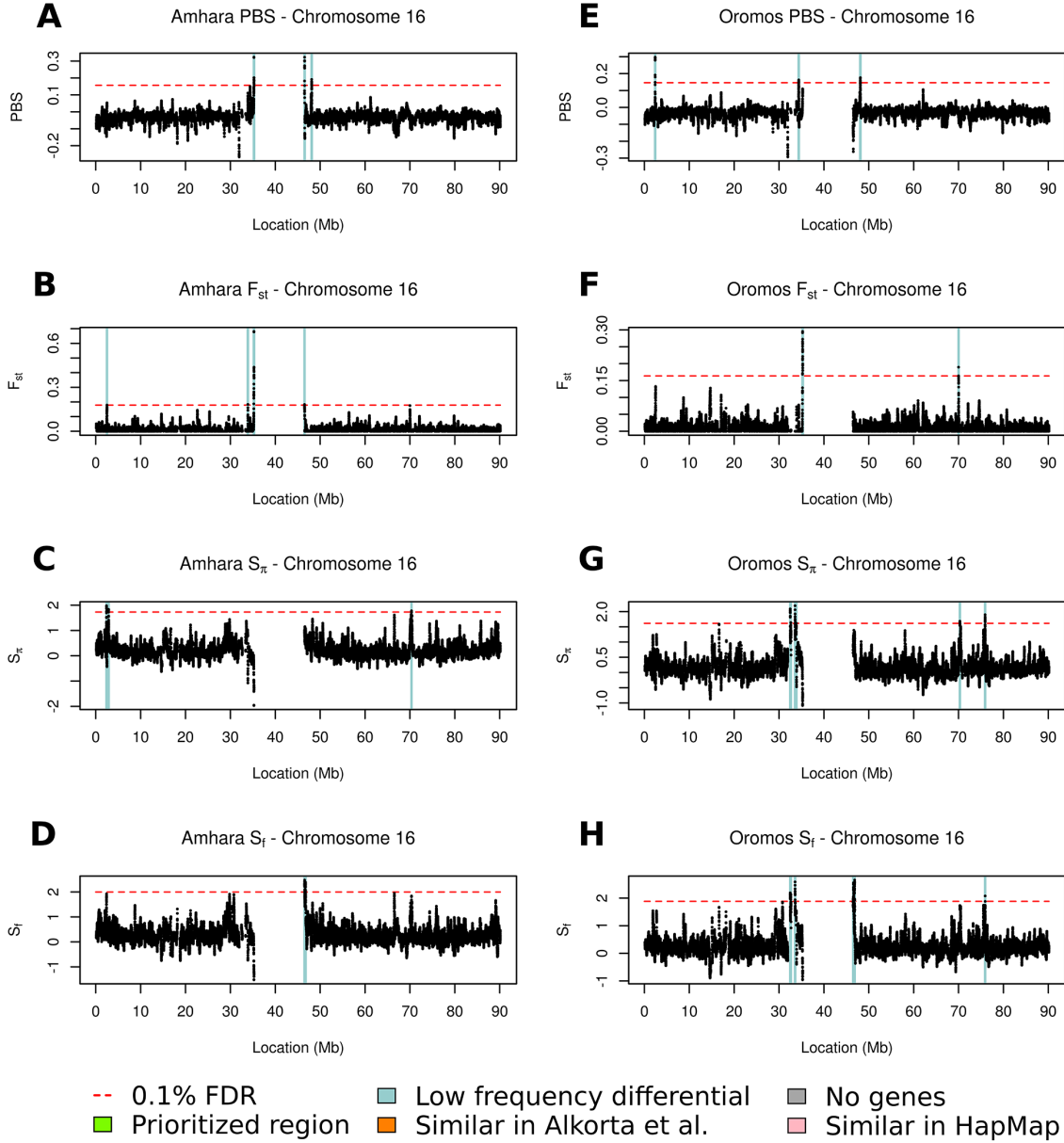
Chromosome 13. Test statistic values in the Amhara (A-D) and Oromos (E-H) populations. The tests shown are PBS (A, E), F_{st} (B, F), S_{π} (C, G), and S_f (D, H). The four prioritization filters that were used to shortlist the regions are color-coded. Regions above the 0.1% FDR that passed all filters are shown in green. Specifically, the green region in the Amhara vs. LWK S_{π} statistic, position 78.5M, contains one gene (*EDNRB*), and has S_{π} statistic value of 2.36.



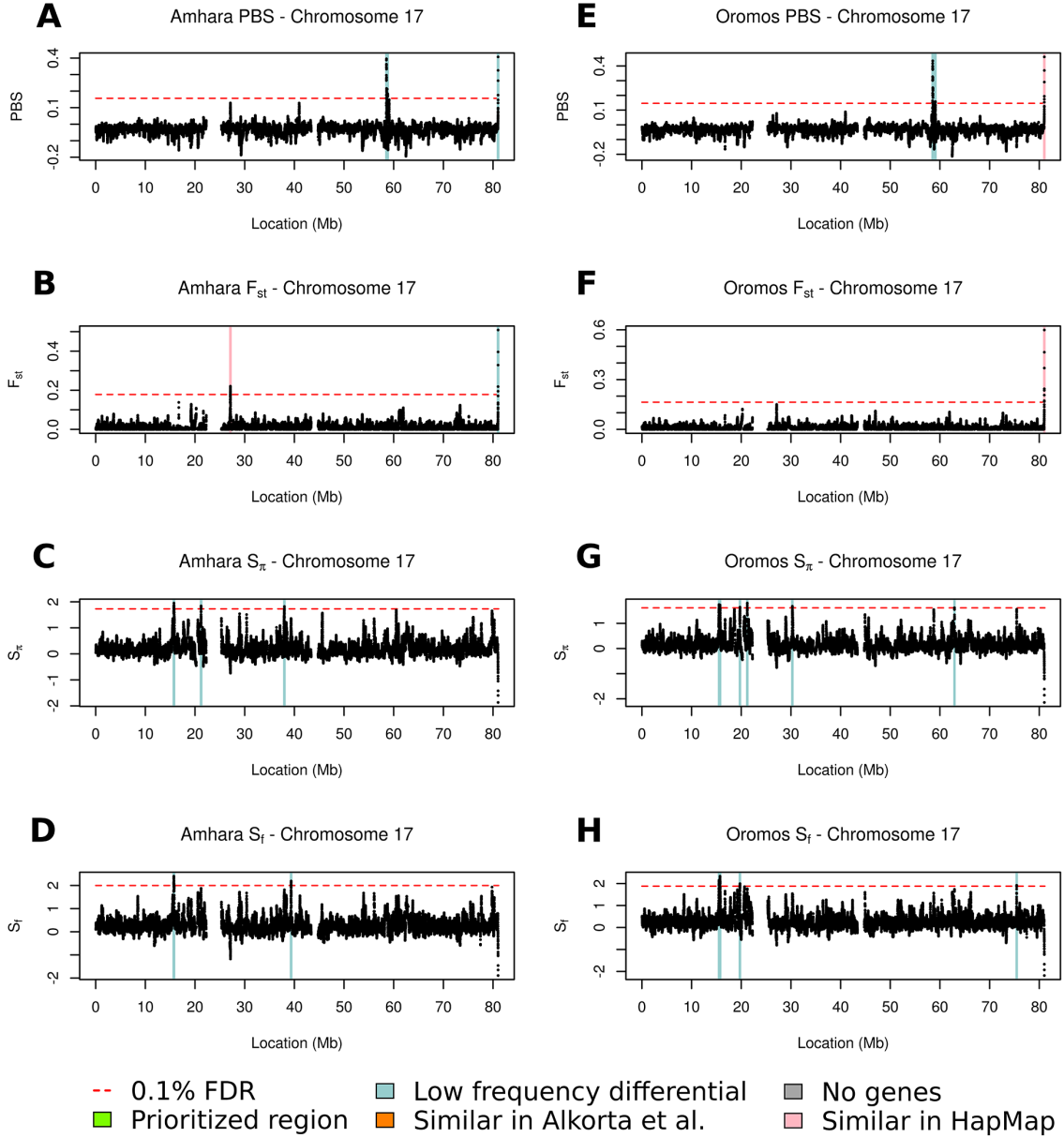
Chromosome 14. Test statistic values in the Amhara (A-D) and Oromos (E-H) populations. The tests shown are PBS (A, E), F_{st} (B, F), S_{π} (C, G), and S_{fi} (D, H). The four prioritization filters that were used to shortlist the regions are color-coded. Regions above the 0.1% FDR that passed all filters are shown in green. Specifically, the green region in the Amhara vs. LWK and Oromos vs. LWK F_{st} statistic, position 106.3M, contains one gene (*KIAA0125*), and has F_{st} statistic values of 0.28 and 0.27, respectively.



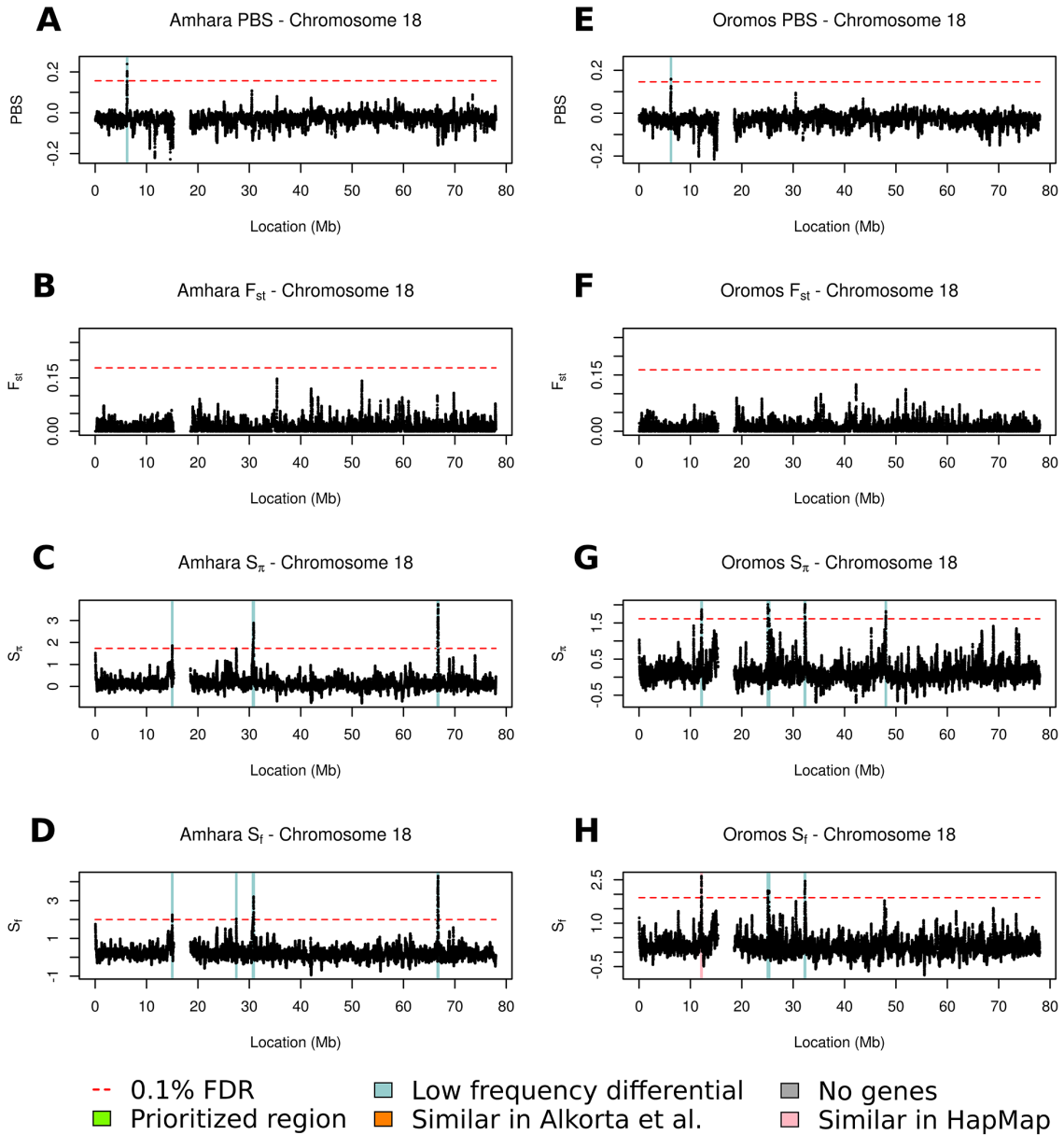
Chromosome 15. Test statistic values in the Amhara (A-D) and Oromos (E-H) populations. The tests shown are PBS (A, E), F_{st} (B, F), S_{π} (C, G), and S_f (D, H). The four prioritization filters that were used to shortlist the regions are color-coded. Regions above the 0.1% FDR that passed all filters are shown in green.



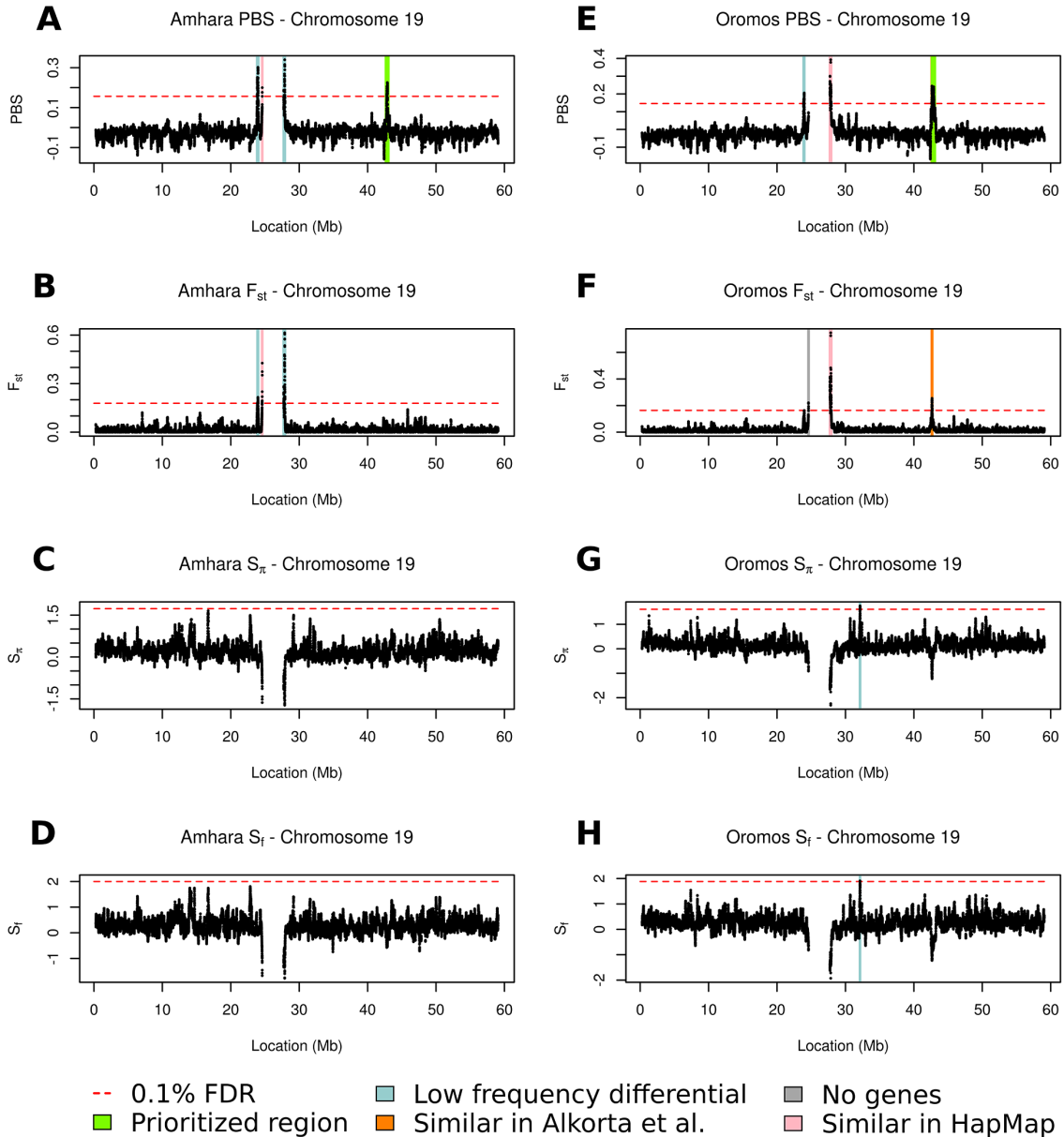
Chromosome 16. Test statistic values in the Amhara (A-D) and Oromos (E-H) populations. The tests shown are PBS (A, E), F_{st} (B, F), S_{π} (C, G), and S_f (D, H). The four prioritization filters that were used to shortlist the regions are color-coded. Regions above the 0.1% FDR that passed all filters are shown in green.



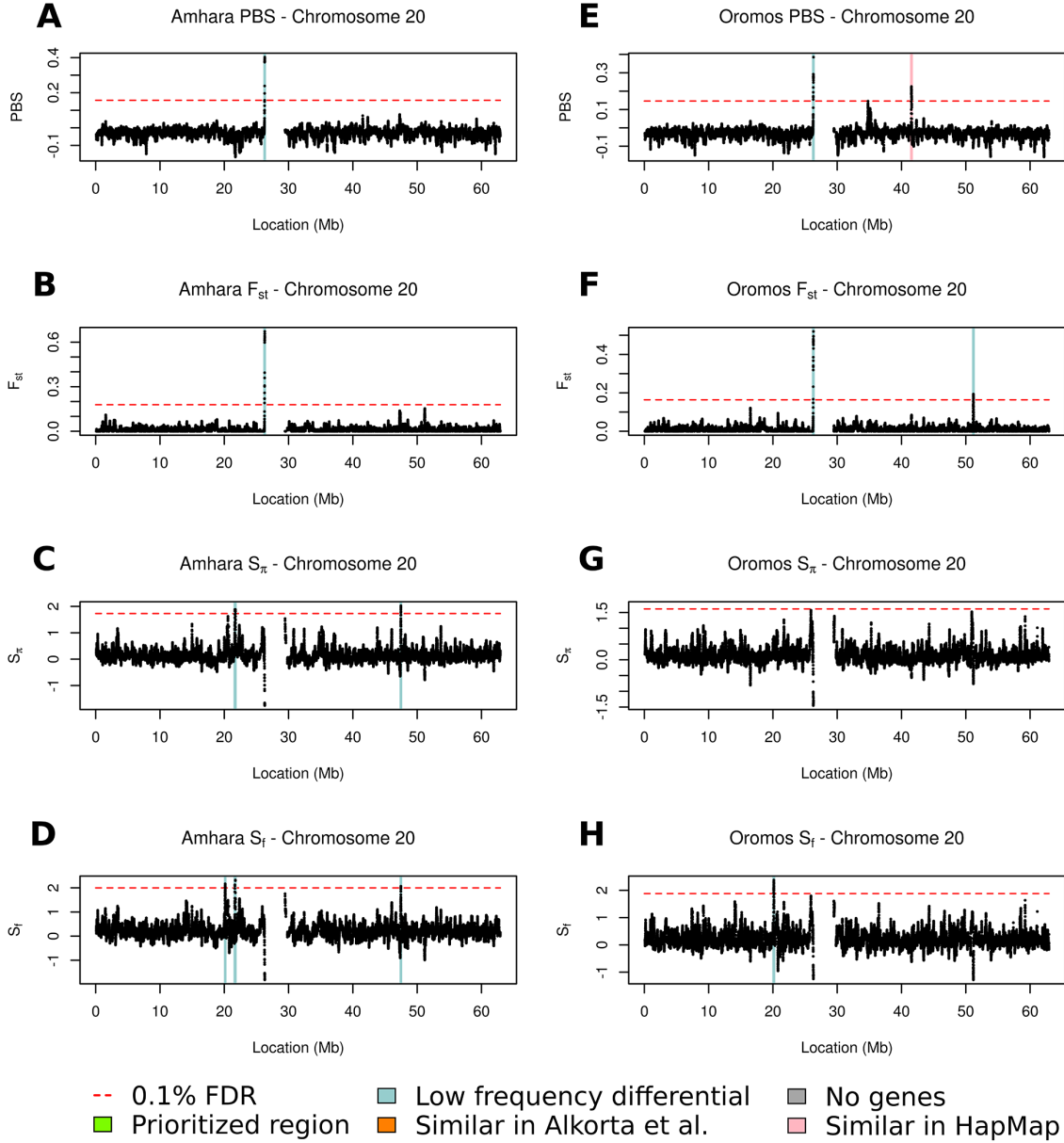
Chromosome 17. Test statistic values in the Amhara (A-D) and Oromos (E-H) populations. The tests shown are PBS (A, E), F_{st} (B, F), S_{π} (C, G), and S_f (D, H). The four prioritization filters that were used to shortlist the regions are color-coded. Regions above the 0.1% FDR that passed all filters are shown in green.



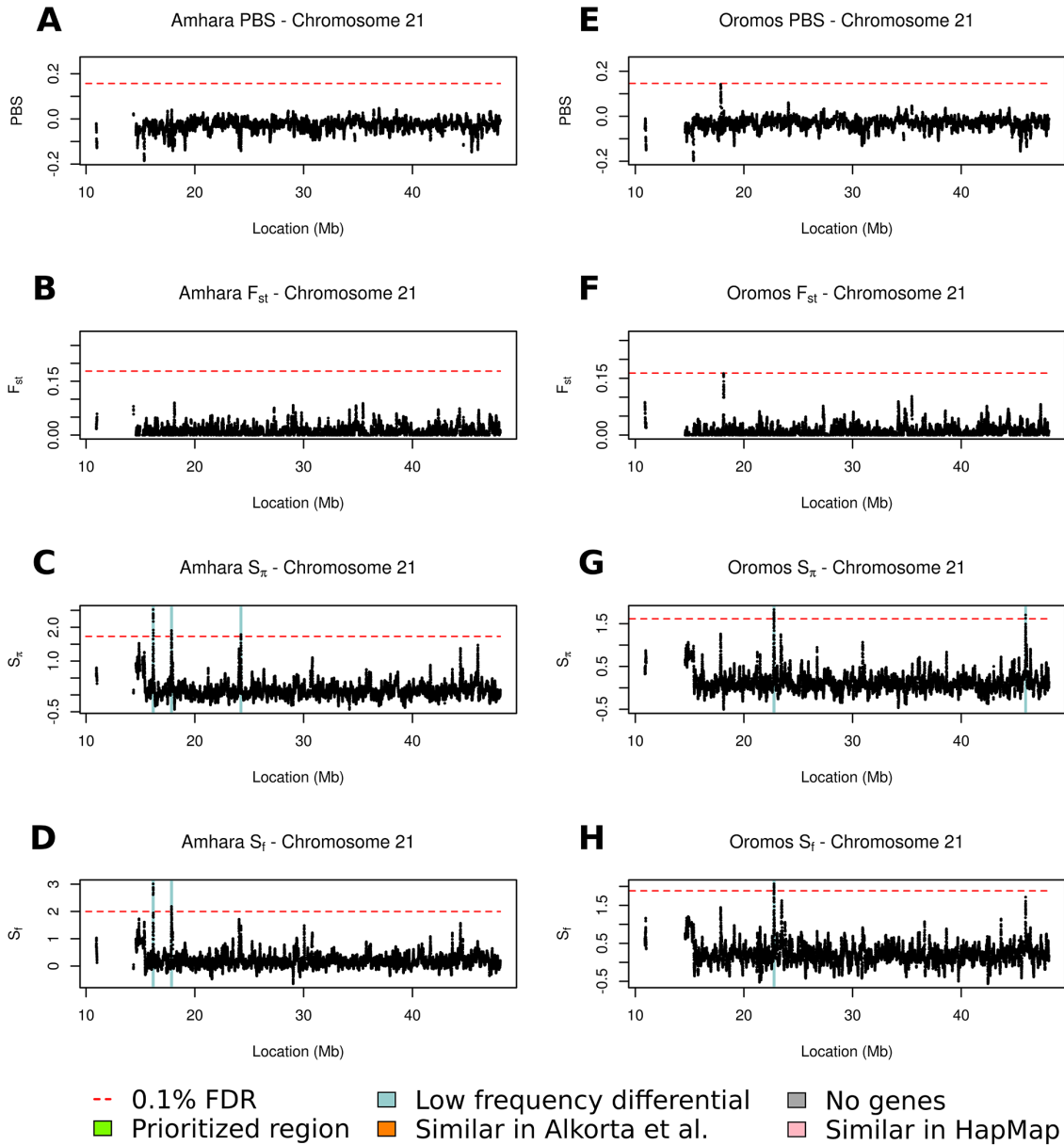
Chromosome 18. Test statistic values in the Amhara (A-D) and Oromos (E-H) populations. The tests shown are PBS (A, E), F_{st} (B, F), S_{π} (C, G), and S_f (D, H). The four prioritization filters that were used to shortlist the regions are color-coded. Regions above the 0.1% FDR that passed all filters are shown in green.



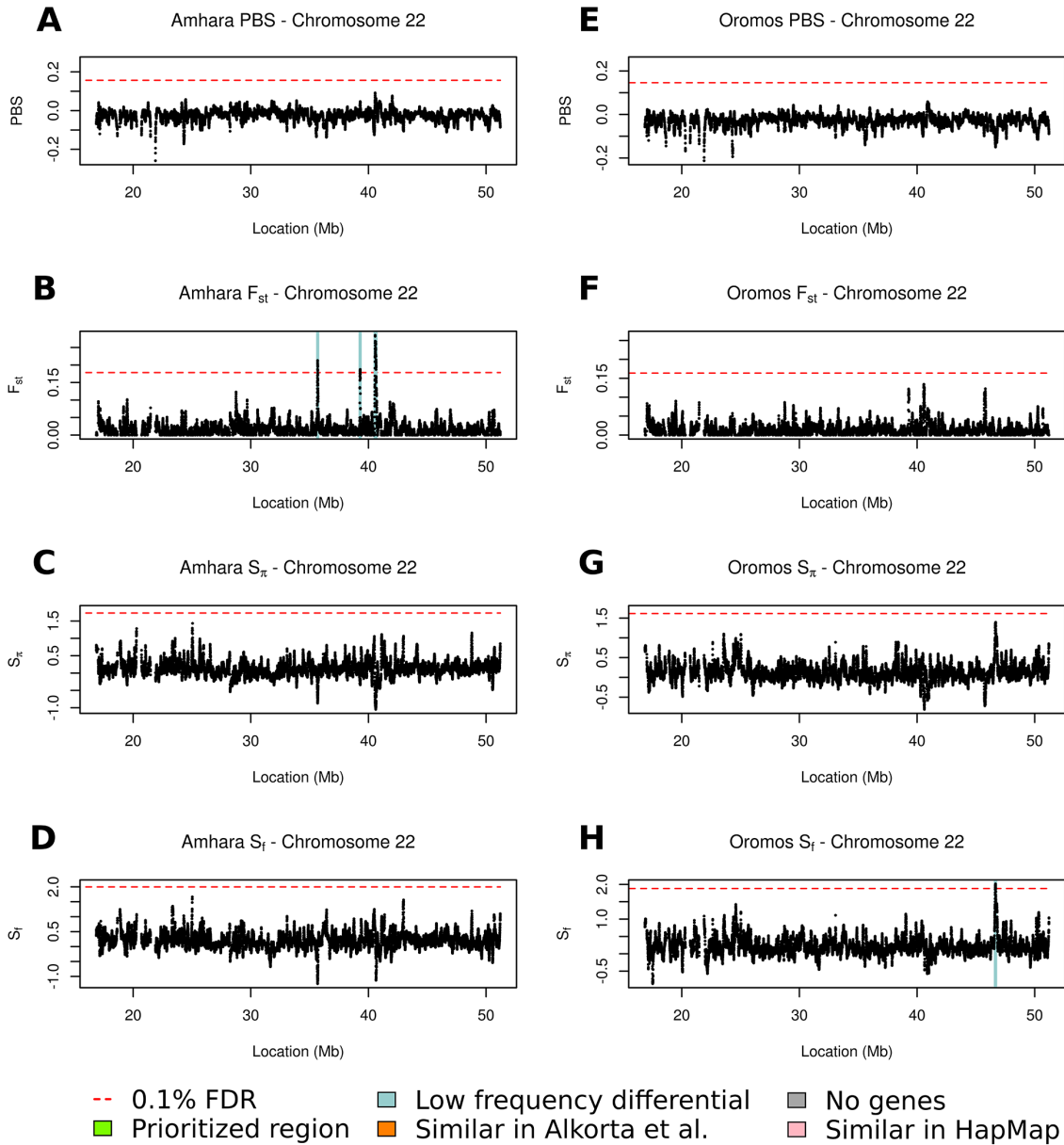
Chromosome 19. Test statistic values in the Amhara (A-D) and Oromos (E-H) populations. The tests shown are PBS (A, E), F_{st} (B, F), S_{π} (C, G), and S_f (D, H). The four prioritization filters that were used to shortlist the regions are color-coded. Regions above the 0.1% FDR that passed all filters are shown in green. Specifically, the green region in both the Amhara vs. LWK and Oromos vs. LWK PBS statistic, position 42.74-42.97M, contains ten genes (*GSK3A*, *ERF*, *CIC*, *PFAH1B3*, *PRR19*, *TMEM145*, *MEGF8*, *CNFN*, *LIPE*, and *CXCL17*), and has PBS statistic values of 0.226 and 0.24, respectively.



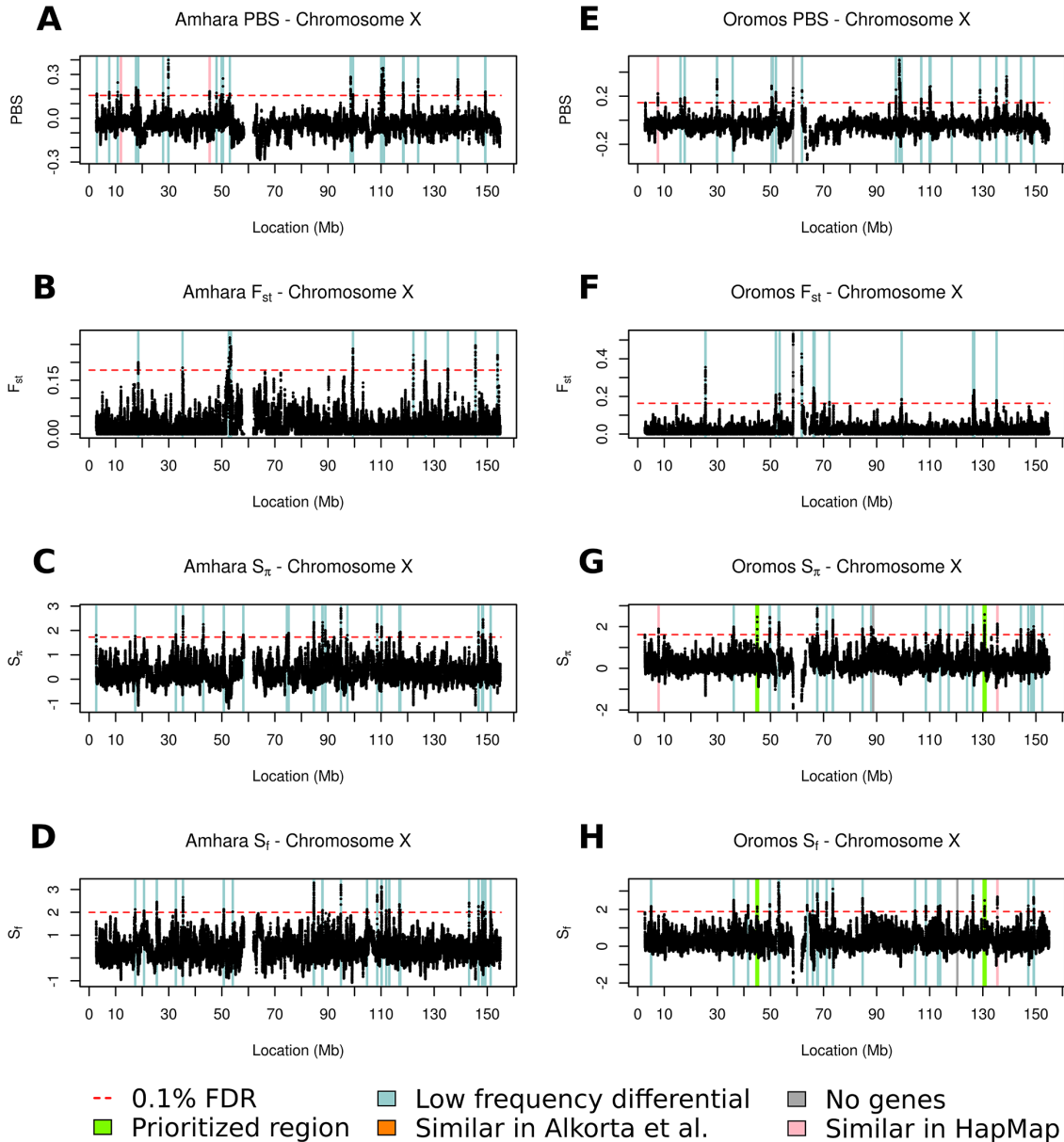
Chromosome 20. Test statistic values in the Amhara (A-D) and Oromos (E-H) populations. The tests shown are PBS (A, E), F_{st} (B, F), S_{π} (C, G), and S_f (D, H). The four prioritization filters that were used to shortlist the regions are color-coded. Regions above the 0.1% FDR that passed all filters are shown in green.



Chromosome 21. Test statistic values in the Amhara (A-D) and Oromos (E-H) populations. The tests shown are PBS (A, E), F_{st} (B, F), S_{π} (C, G), and S_f (D, H). The four prioritization filters that were used to shortlist the regions are color-coded. Regions above the 0.1% FDR that passed all filters are shown in green.



Chromosome 22. Test statistic values in the Amhara (A-D) and Oromos (E-H) populations. The tests shown are PBS (A, E), F_{st} (B, F), S_{π} (C, G), and S_f (D, H). The four prioritization filters that were used to shortlist the regions are color-coded. Regions above the 0.1% FDR that passed all filters are shown in green.



Chromosome X. Test statistic values in the Amhara (A-D) and Oromos (E-H) populations. The tests shown are PBS (A, E), F_{st} (B, F), S_{π} (C, G), and S_f (D, H). The four filters that were used to shortlist the regions are color-coded. Regions above the 0.1% FDR that passed all filters are shown in green. Specifically, the (left) green region in the Oromos vs. LWK S_{π} and S_f statistics, position 45.0M, contains one gene (*CXorf36*), and has S_{π} and S_f statistic values of 2.46 and 2.15, respectively. In addition, the (right) green region in the Oromos vs. LWK S_{π} and S_f statistic, position 130M, contains one gene (*OR13H1*), and has S_{π} and S_f statistic value of 2.58 and 2.49, respectively.