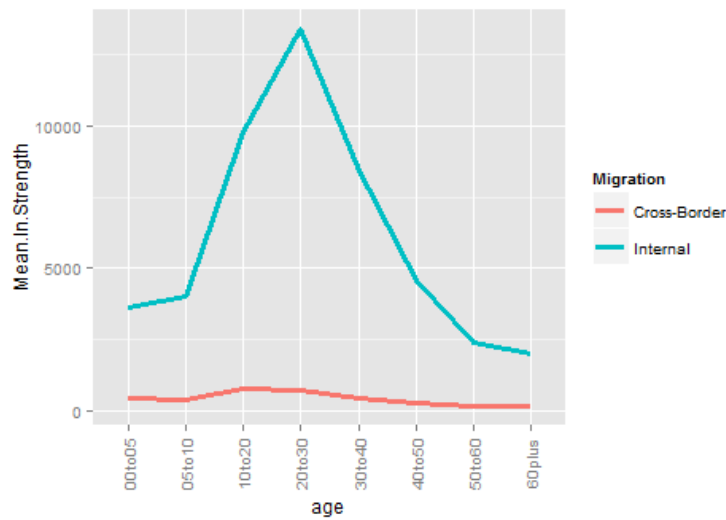
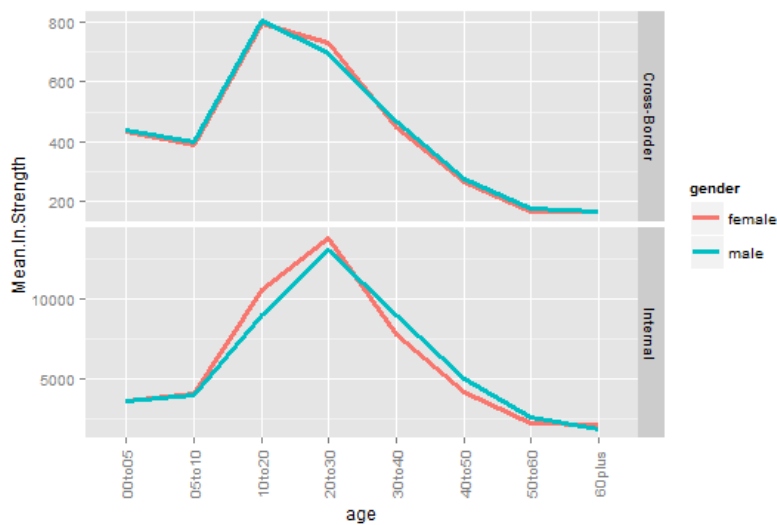


1. Comparing cross-border and within country (internal) migration in Kenya, stratified by age



2. Comparing cross-border and within country (internal) migration in Kenya, stratified by age and gender



Methods used to generate networks of internal and cross-border migrants were similar to methods developed and applied in Pindolia et al [1]. With no data on cross-border migrant origins, mean in-degree and mean in-graph strength were used instead of mean degree and mean graph strength, which incorporate HPM in both directions.

References:

1. Pindolia DK, Garcia AJ, Wesolowski A, Smith DL, Buckee CO, Noor AM, Snow RW, Tatem AJ: **Human movement data for malaria control and elimination strategic planning.** *Malar J* 2012, **11**:205.