

Figure S1A: individual participant raw data and skewed Gaussian fits for transient visual gamma responses (participants 1-8). The red line indicates the raw data and the grey line the fit. There are four conditions for each participant (pre/post-alcohol/placebo) presented in a random order. Grey shading indicates excluded participants.

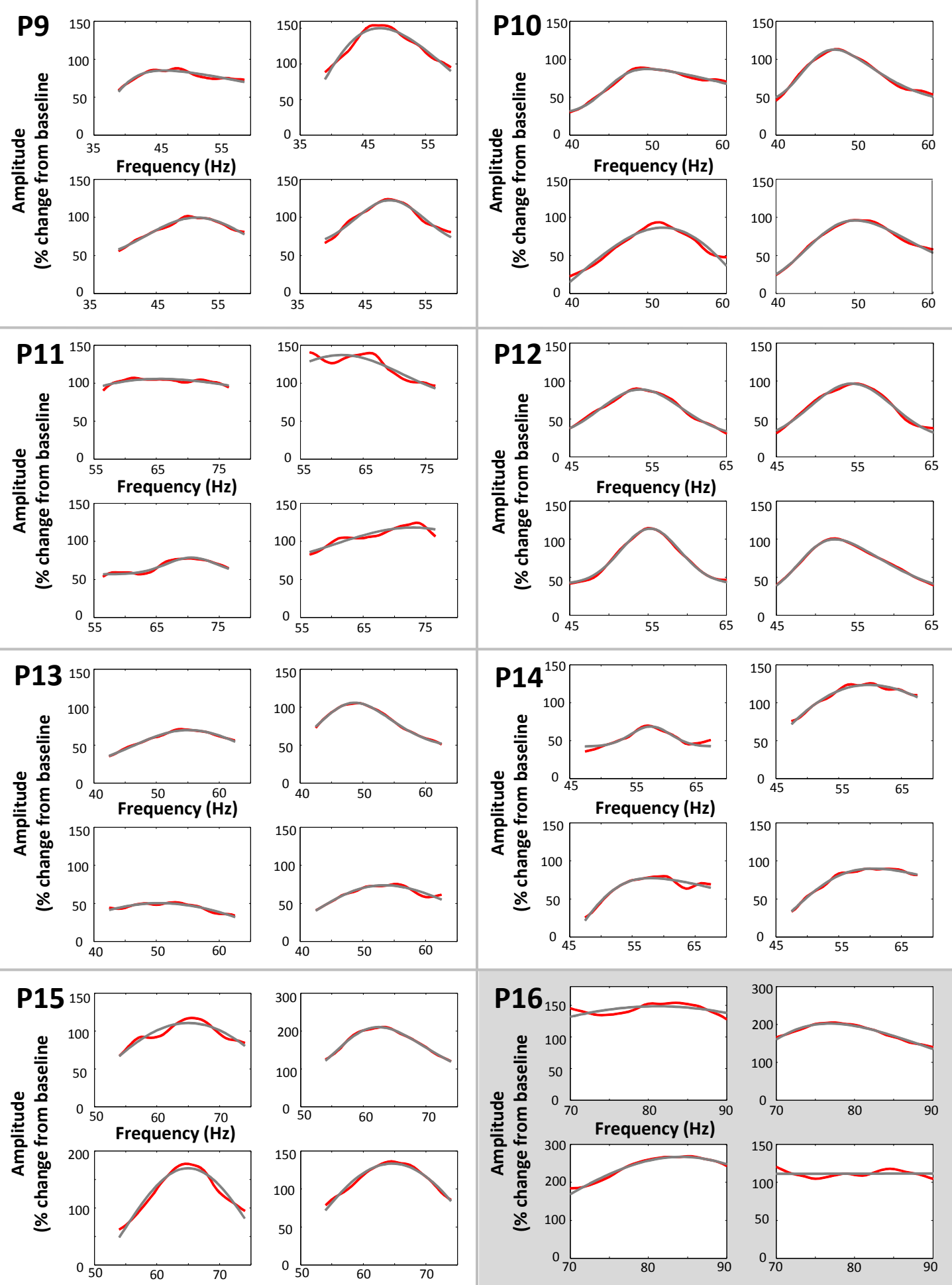


Figure S1B: individual participant raw data and skewed Gaussian fits for transient visual gamma responses (participants 9-16). The red line indicates the raw data and the grey line the fit. There are four conditions for each participant (pre/post-alcohol/placebo) presented in a random order. Grey shading indicates excluded participants.

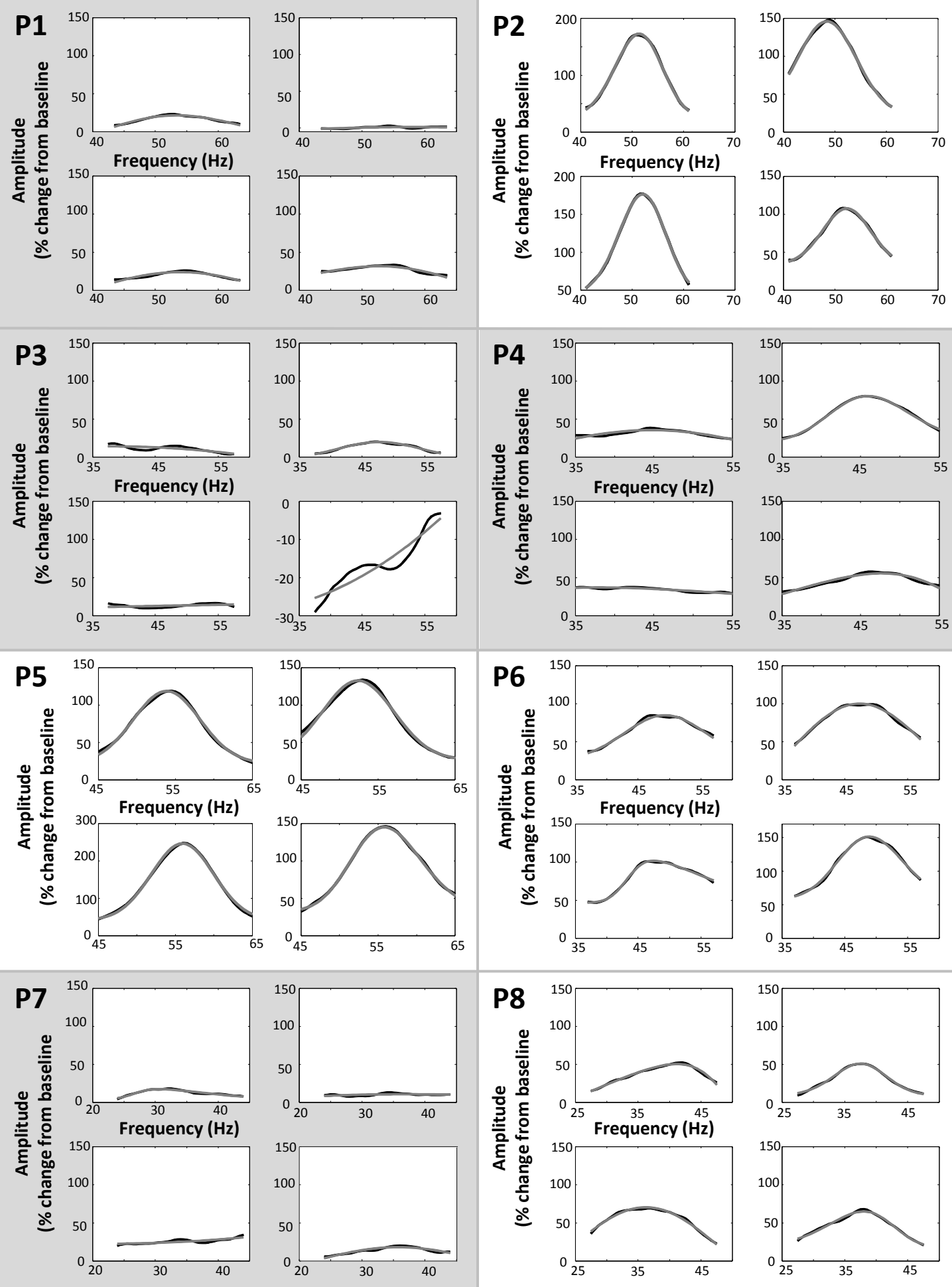


Figure SIC: individual participant raw data and skewed Gaussian fits for sustained visual gamma responses (participants 1-8). The black line indicates the raw data and the grey line the fit. There are four conditions for each participant (pre/post-alcohol/placebo) presented in a random order. Grey shading indicates excluded participants.

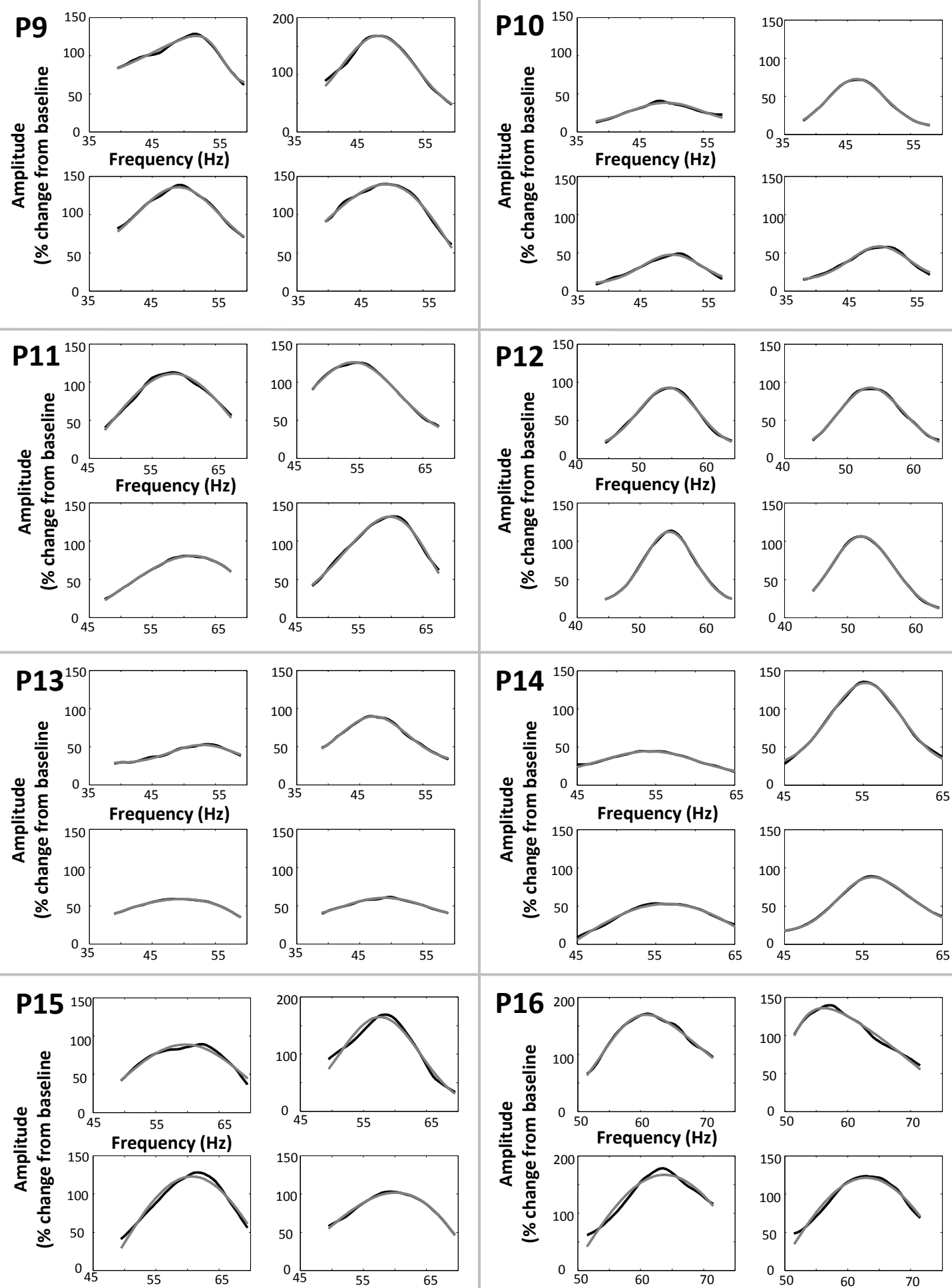


Figure SID: individual participant raw data and skewed Gaussian fits for sustained visual gamma responses (participants 9-16). The black line indicates the raw data and the grey line the fit. There are four conditions for each participant (pre/post-alcohol/placebo) presented in a random order. Grey shading indicates excluded participants.

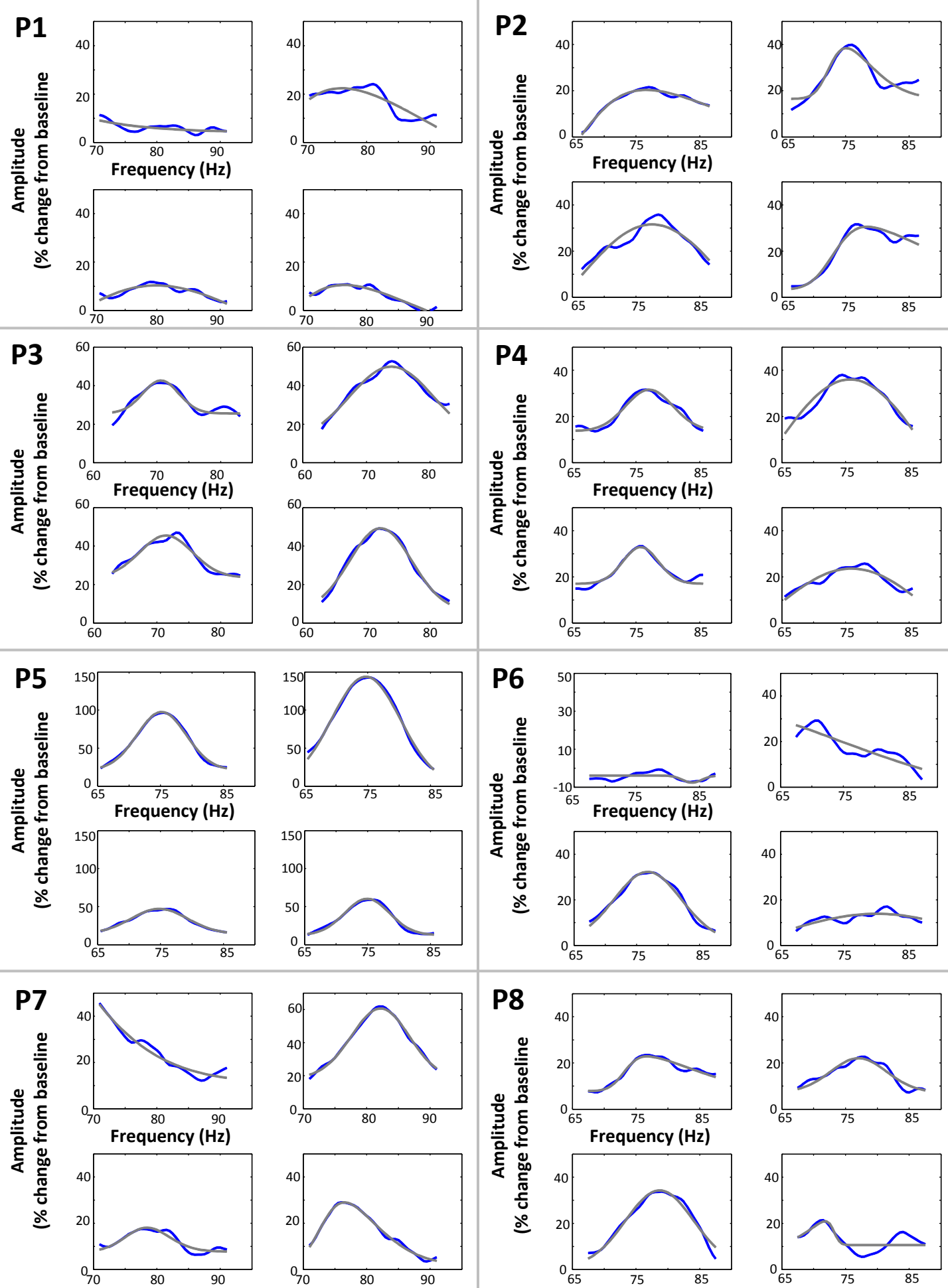


Figure S1E: individual participant raw data and skewed Gaussian fits for sustained visual gamma responses (participants 9-16). The black line indicates the raw data and the grey line the fit. There are four conditions for each participant (pre/post-alcohol/placebo) presented in a random order. Grey shading indicates excluded participants.

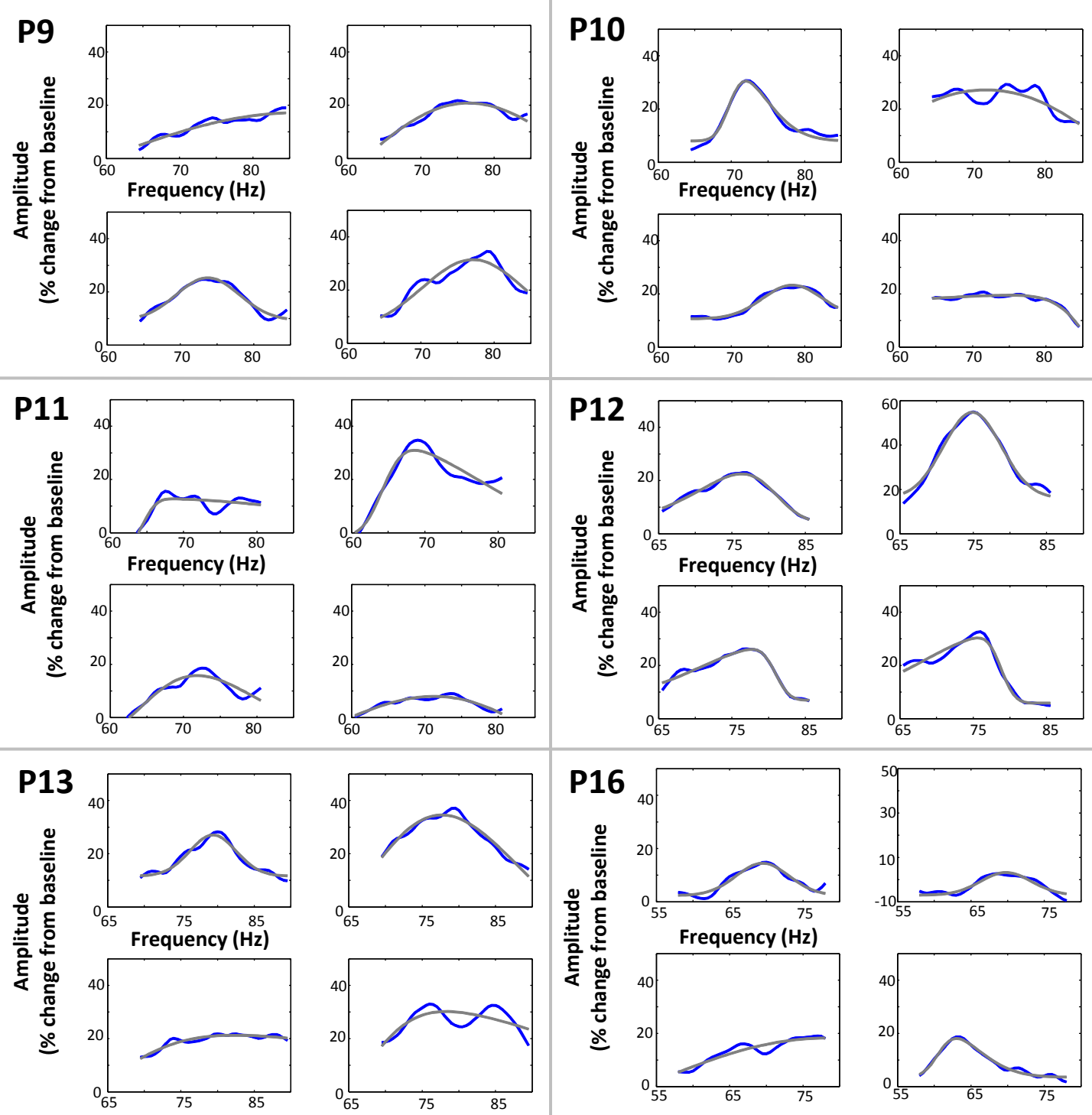


Figure S1F: individual participant raw data and skewed Gaussian fits for movement related gamma responses (participants 9-16). The blue lines indicates the raw data and the grey lines the fit. There are four conditions for each participant (pre/post- alcohol/placebo) presented in a random order. There is no data for participants 14 and 15 as these were excluded due to missing data.