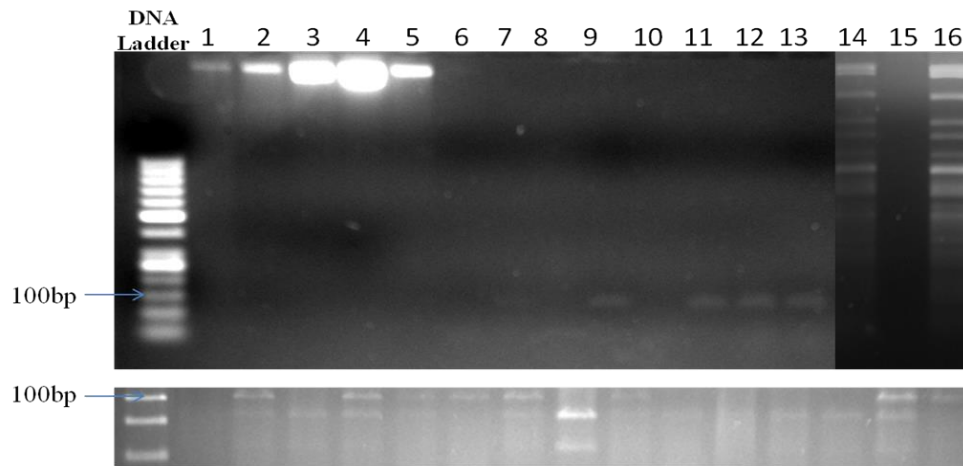
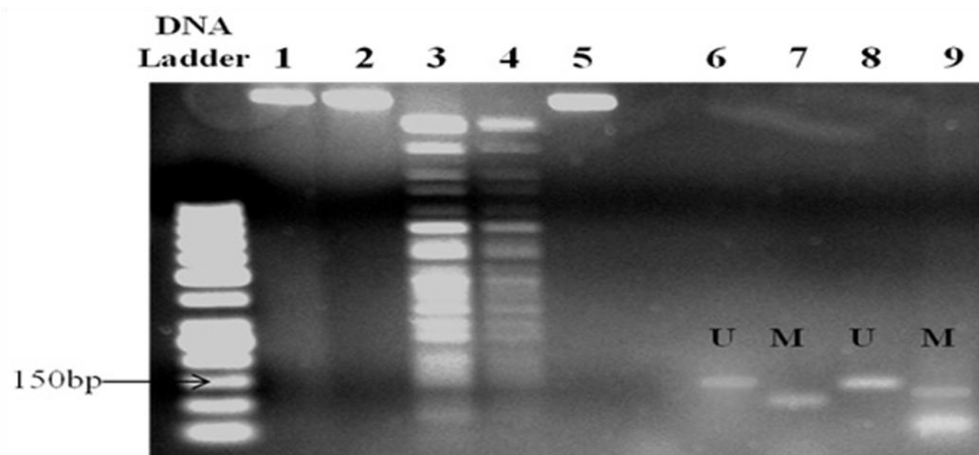


Supplementary figure 1a: Restriction endonuclease digestion of methylated and unmethylated PCR product of *MGMT* gene



Gel 1: Well 1 to 3: Unmethylated control DNA treated with BstU1; 4, 5: Methylated control DNA treated with Taq1; 6 to 13: methylated and unmethylated PCR products (without treated with any enzyme); 14, 16: methylated gDNA treated with BstU1; well 15: no sample. **Gel 2:** Methylated positive digested with BstU1. DNA ladder: 25bp

Supplementary figure 1b: Restriction endonucleases digestion of methylated and unmethylated PCR product of *p16* gene



Well 1, 2 and 5: Unmethylated control DNA; 3, 4: Methylated control DNA; 6, 7: MSP PCR product: not treated with enzyme; 8, 9: PCR product with enzyme treatment. U: un methylated (151bp); M: Methylated (150bp). DNA ladder: 50bp