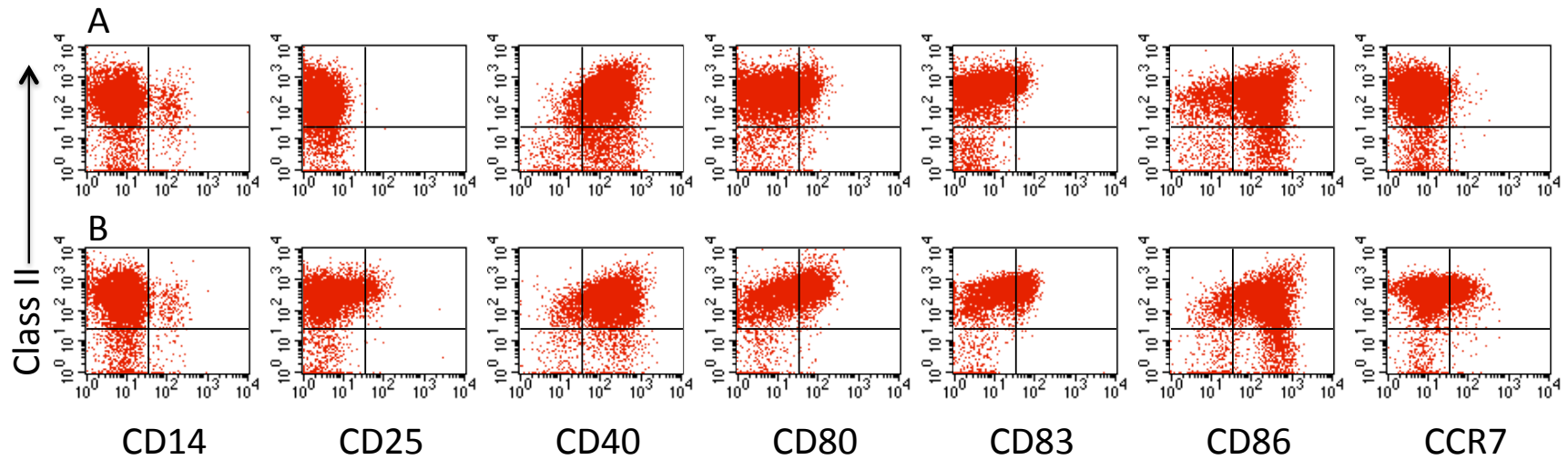


Supplementary Data

Supplementary Figure S2. Phenotypic analysis of CMV pp65 RNA-pulsed DCs.



RNA-pulsed immature (A) and mature DCs (B) were generated as described in Methods and Figure S1 and analyzed using the antibodies indicated in the figure. One representative analysis (Patient 5) out of a total 4 done using GBM patient PBMC-derived DCs is shown.