

A

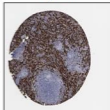
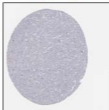
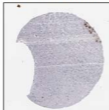
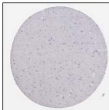
Human protein atlas data

45 yo male
(Patient 2521)
cerebral cortex

45 yo male
(Patient 2521)
SVZ/lateral ventricle

19 yo female
(Patient 2524)
hippocampus

72 yo male
(Patient 1714)
spleen



CD36 null mice

B

SVZ

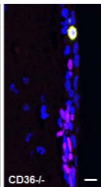
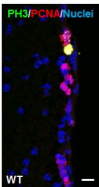
C

SVZ

D

SGZ

PH3/PCNA/Nuclei

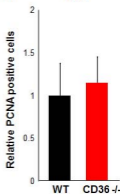
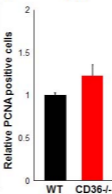


Relative PCNA positive cells

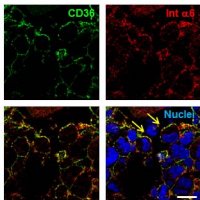
WT CD36^{-/-}

Relative PCNA positive cells

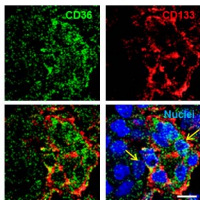
WT CD36^{-/-}



A GBM intracranial xenograft (GBM10)



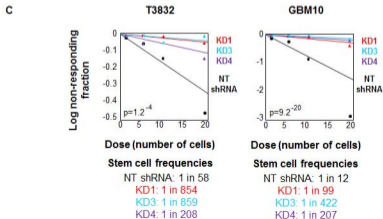
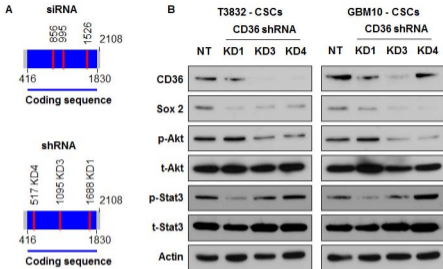
B GBM intracranial xenograft (GBM10)

C CD36 co-expression with integrin $\alpha 6$

Tumor	% overlap (+/- stdev)
T3832	74.9 (+/- 16.0)
T387	98.1 (+/- 3.3)
T3691	71.6 (+/- 19.7)
GBM10	83.3 (+/- 4.9)

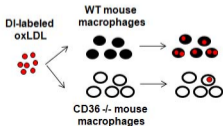
D CD36 co-expression with CD133

Tumor	% overlap (+/- stdev)
T3832	71.5 (+/- 11.1)
T387	50.9 (+/- 10.3)
T3691	86.2 (+/- 17.0)
GBM10	56.7 (+/- 19.9)

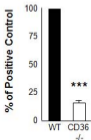


CD36 inhibitor (2-methylthio-1,4-naphthoquinone, MTN) validation

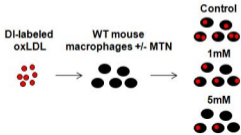
A Macrophage lipid uptake assay



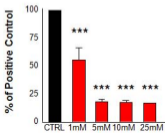
B



C Macrophage lipid uptake assay with MTN



D



Institution	ID	Age	Sex	Pathological Diagnosis
Duke University	T387	TBD	TBD	GBM
Duke University	T3691	58	F	GBM
Duke University	T3832	75	F	GBM
Duke University	T4121	26	M	Grade III
Duke University	T4302	40	M	Grade III
Mayo Clinic	GBM 10	41	M	GBM
Mayo Clinic	GBM 12	68	M	GBM
Mayo Clinic	GBM 14	57	M	GBM
Mayo Clinic	GBM 59	TBD	TBD	GBM
Cleveland Clinic	NM13	55	M	Non-tumor
Cleveland Clinic	CCF860	37	M	GBM
Cleveland Clinic	CCF1374	60	M	GBM
Cleveland Clinic	CCF2309	30	M	GBM
Cleveland Clinic	CCF2517	47	M	GBM
Cleveland Clinic	CCF2857	54	F	Grade III
Case Western Reserve University	CW1552	57	F	GBM
Case Western Reserve University	CW1553	49	F	GBM
Case Western Reserve University	CW1563	70	M	GBM