

Supplemental Table I. Association between individual inflammatory macrophage markers and measures of subclinical carotid artery disease, by HIV and HCV status, Women's Interagency HIV Study.

	N	Any carotid artery lesion			Distensibility ($10^{-6} \times N^{-1} \times m^2$)			cIMT (mm)		
		Odds ratio	95% CI	P	β	95% CI	P	β	95% CI	P
<u>Gal-3BP (per SD)</u>										
HIV-/HCV-	65	1.60	0.66, 3.87	0.30	-1.81	-3.83, 0.21	0.08	-0.001	-0.02, 0.02	0.90
HIV-/HCV+	63	2.07	0.89, 4.81	0.09	-0.43	-2.12, 1.25	0.62	-0.03	-0.07, 0.01	0.12
HIV+/HCV-	64	1.48	0.58, 3.79	0.41	-2.49	-5.01, 0.03	0.05	-0.02	-0.07, 0.02	0.28
HIV+/HCV+	64	1.72	0.80, 3.70	0.17	-1.14	-2.59, 0.32	0.13	0.0002	-0.03, 0.03	0.99
<u>sCD163 (per SD)</u>										
HIV-/HCV-	65	0.74	0.20, 2.75	0.65	0.03	-2.66, 2.71	0.98	-0.002	-0.03, 0.03	0.90
HIV-/HCV+	63	1.29	0.45, 3.71	0.64	-1.17	-3.32, 0.99	0.29	-0.034	-0.08, 0.02	0.17
HIV+/HCV-	64	4.12	1.11, 15.21	0.03	-0.23	-2.55, 2.08	0.84	-0.05	-0.09, -0.02	0.01
HIV+/HCV+	64	2.68	1.10, 6.54	0.03	0.15	-1.62, 1.92	0.87	-0.004	-0.04, 0.03	0.78
<u>sCD14 (per SD)</u>										
HIV-/HCV-	65	1.89	0.48, 7.49	0.36	0.57	-2.63, 3.77	0.73	-0.004	-0.04, 0.03	0.81
HIV-/HCV+	63	0.84	0.23, 3.04	0.79	-1.07	-3.57, 1.43	0.40	0.01	-0.05, 0.07	0.74
HIV+/HCV-	64	1.37	0.61, 3.07	0.44	-2.38	-4.45, -0.31	0.02	-0.02	-0.06, 0.01	0.23
HIV+/HCV+	64	1.78	0.97, 3.29	0.06	-0.96	-2.22, 0.30	0.14	0.02	-0.007, 0.04	0.19

cIMT = right distal common carotid artery intima-medial thickness, CI = confidence interval, HCV = hepatitis C virus, HIV = human immunodeficiency virus, m = meters, mm = millimeters, N = Newtons, SD = standard deviation.

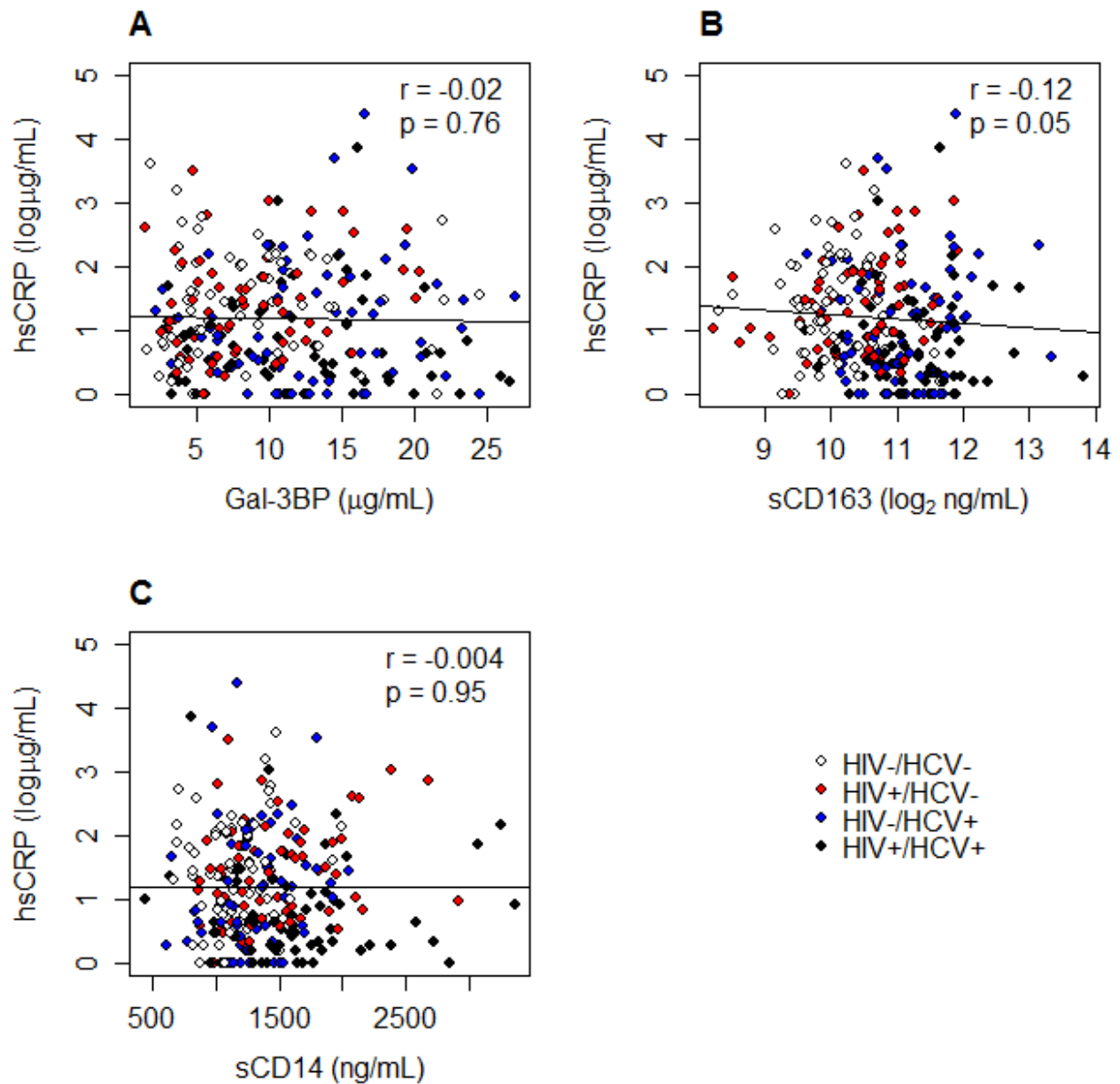
All analyses adjusted for age, race/ethnicity, smoking status, body mass index, high-sensitivity C-reactive protein, and HIV and HCV infection. Bold indicates significant at $p < 0.05$.

Supplemental Table II. Association between inflammatory macrophage markers and right distal common carotid artery intima-media thickness, Women's Interagency HIV Study.

	cIMT (mm)		
	β	95% CI	P
Inflammatory macrophage score, per each elevated marker (range: 0-3)			
<u>Among entire study population (N=256)</u>			
Modeled as continuous	-0.009	-0.03, 0.01	0.34
Modeled as categorical			
0 (reference group)	0.00		
1	-0.03	-0.07, 0.01	0.11
2	-0.03	-0.07, 0.02	0.21
3	-0.03	-0.09, 0.02	0.25
<u>Stratified analyses</u>			
Modeled as continuous			
In HIV-/HCV- (N=65)	0.01	-0.01, 0.04	0.30
In HIV-/HCV+ (N=63)	-0.04	-0.08, 0.01	0.11
In HIV+/HCV- (N=64)	-0.03	-0.06, -0.001	0.04
In HIV+/HCV+ (N=64)	-0.005	-0.03, 0.03	0.75
Individual inflammatory macrophage markers, per each standard deviation			
<u>Among entire study population (N=256)</u>			
Gal-3BP	-0.01	-0.03, 0.01	0.29
sCD163	-0.02	-0.04, 0.01	0.15
sCD14	0.004	-0.02, 0.03	0.79

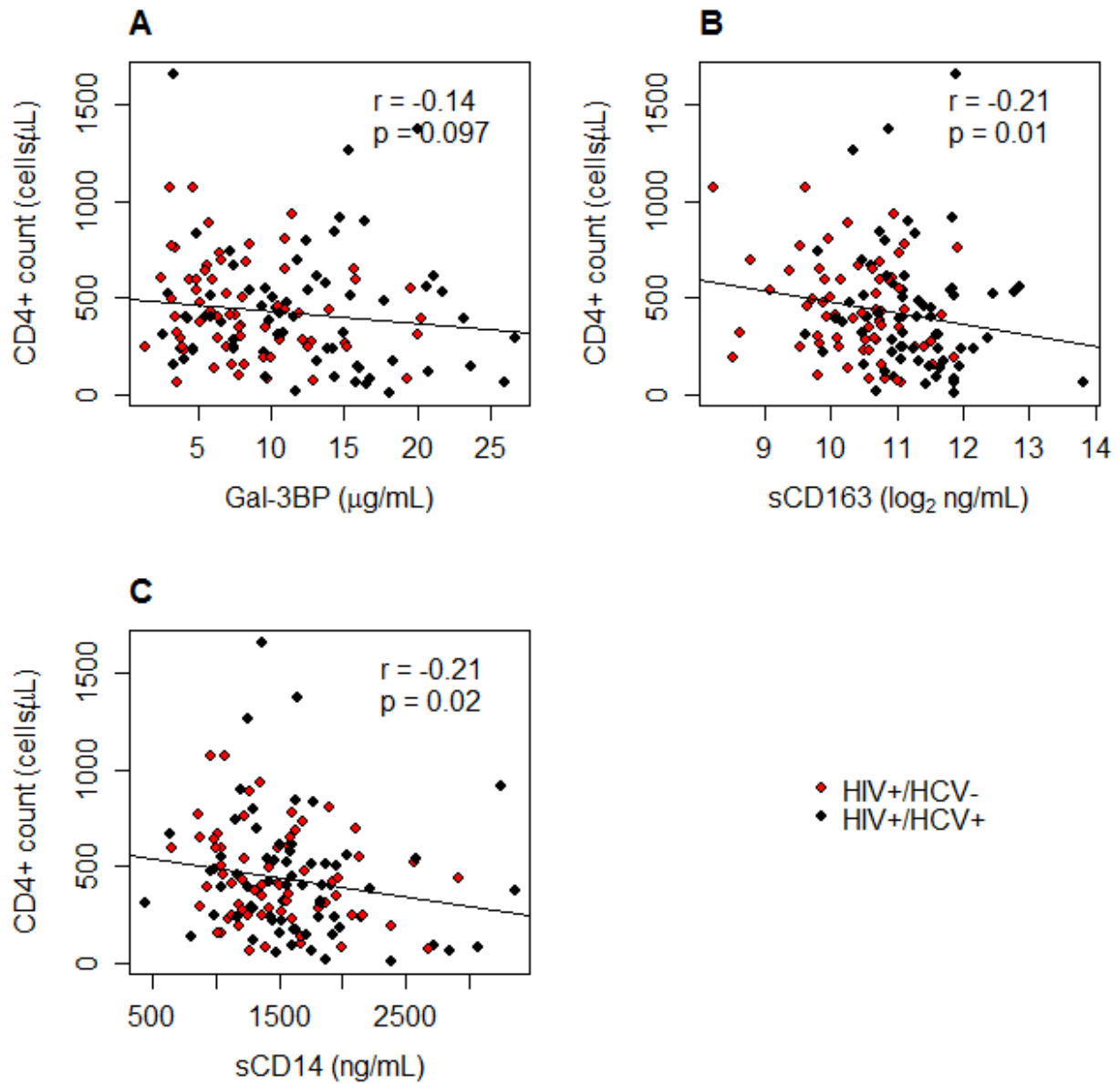
cIMT = right distal common carotid artery intima-media thickness, CI = confidence interval, HCV = hepatitis C virus, HIV = human immunodeficiency virus, mm = millimeters.

All analyses adjusted for age, race/ethnicity, smoking status, body mass index, high-sensitivity C-reactive protein, and except for stratified analyses, HIV and HCV infection. Bold indicates significant at p<0.05.



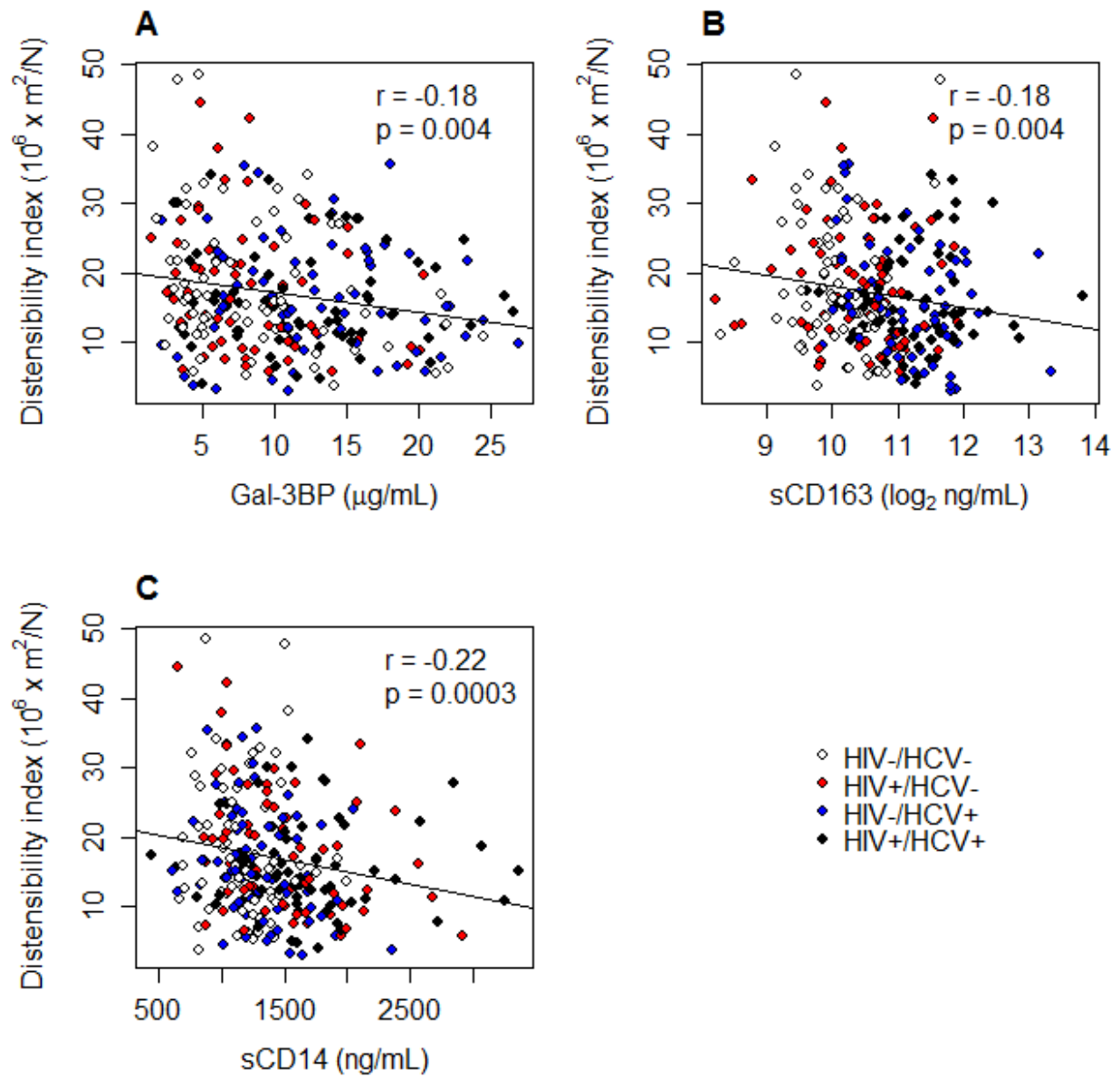
Supplemental Figure I. Spearman correlation, comparing high sensitivity C-reactive protein (hsCRP) levels to (A) Gal-3BP, (B) sCD163, and (C) sCD14, across four HIV/HCV strata.

hsCRP log-transformed after adding one to original value. Line represents regression line fit to observed data.



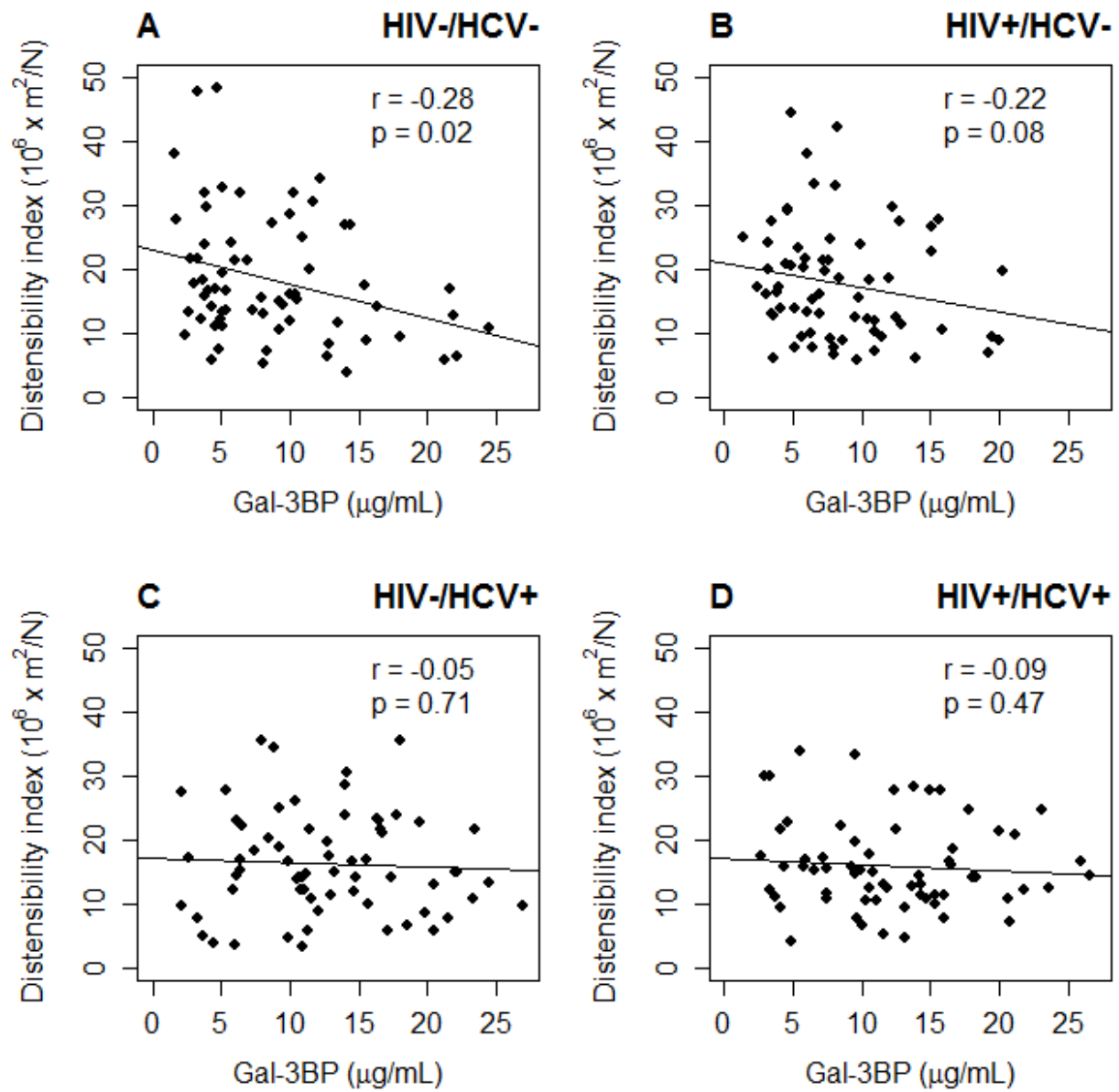
Supplemental Figure II. Spearman correlation, comparing CD4+ count to (A) Gal-3BP, (B) sCD163, and (C) sCD14, among HIV+ women, stratified by HCV status.

Line represents regression line fit to observed data.

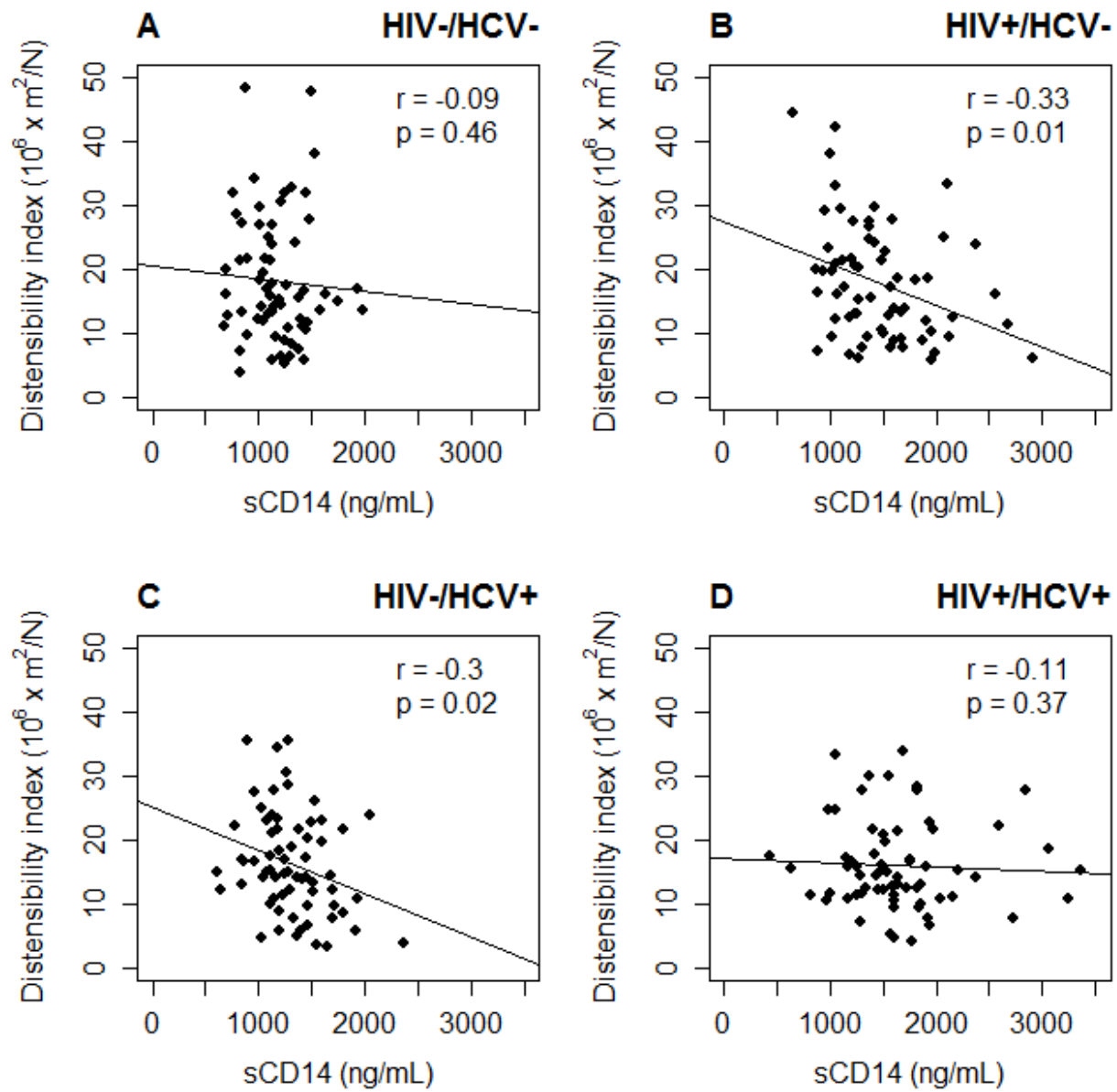


Supplemental Figure III. Spearman correlations comparing distensibility index with (A) Gal-3BP, (B) sCD14, and (C) sCD163, across four HIV/HCV strata.

Line represents regression fit to observed data.



Supplemental Figure IV. Spearman correlations between Gal-3BP and distensibility index, by HIV/HCV strata.



Supplemental Figure V. Spearman correlations between sCD14 and distensibility index, by HIV/HCV strata.