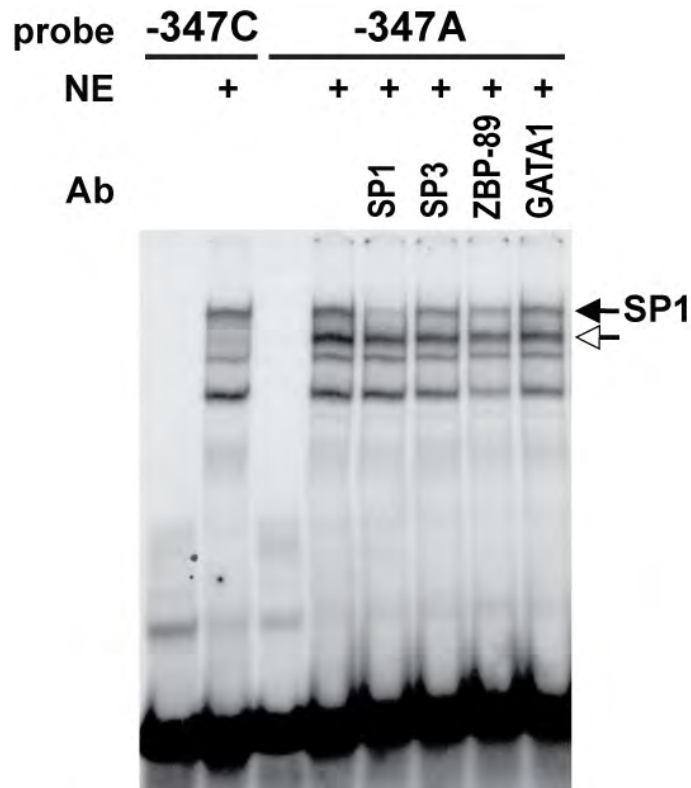


Supplemental table 1	Haplotype Frequencies												Correlation (-347/-1066)
	-347 (rs7130929)				-1066 (rs4537731)			f(-347/-1066)					
	N	C/C	C/A	A/A	T/T	T/C	C/C	f(CT)	f(AC)	f(CC)	f(AT)		
All Ethnicities													
Controls	495	204	225	66	175	208	76	0.60	0.36	0.03	0.00	0.93	
IBS	422	159	199	64	132	150	68	0.58	0.39	0.03	0.00	0.94	
p-value		0.2389			0.519			0.62	0.38	0.31			
Caucasian													
Controls	247	94	116	37	91	108	34	0.61	0.38	0.00	0.00	0.99	
IBS	303	108	143	52	99	111	50	0.58	0.41	0.01	0.00	0.99	
p-value		0.442			0.383			0.52	0.676	0.39			
Hispanic													
Controls	59	22	30	7	21	28	8	0.61	0.37	0.02	0.00	0.96	
IBS	25	12	12	1	8	9	1	0.72	0.28	0.00	0.00	1.00	
p-value		0.221			0.367			0.243	0.56	0.99			
Asian													
Controls	77	49	22	6	45	17	6	0.78	0.22	0.00	0.00	1.00	
IBS	19	13	6	0	13	4	0	0.84	0.16	0.00	0.00	1.00	
p-value		0.418			0.252			0.80	0.80				
African American													
Controls	83	26	46	11	43	23	10	0.40	0.41	0.19	0.00	0.61	
IBS	43	15	19	9	14	13	11	0.39	0.43	0.18	0.00	0.71	
p-value		0.745			0.819			0.99	0.76	0.69			

Supplemental Figure S1. Allele-specific binding of EGR-1 to the -347C/A polymorphism in the *TPH1* core promoter. EMSA analysis using nuclear extract (NE*) from BON cells stimulated with TPA (1 h, 200 nM). Binding reactions were performed with allele-specific probes (-347C and -347A) and included antibodies (Ab) against SP1, SP3, ZBP-89, or GATA1. *Open arrow*: allele-specific binding.



!