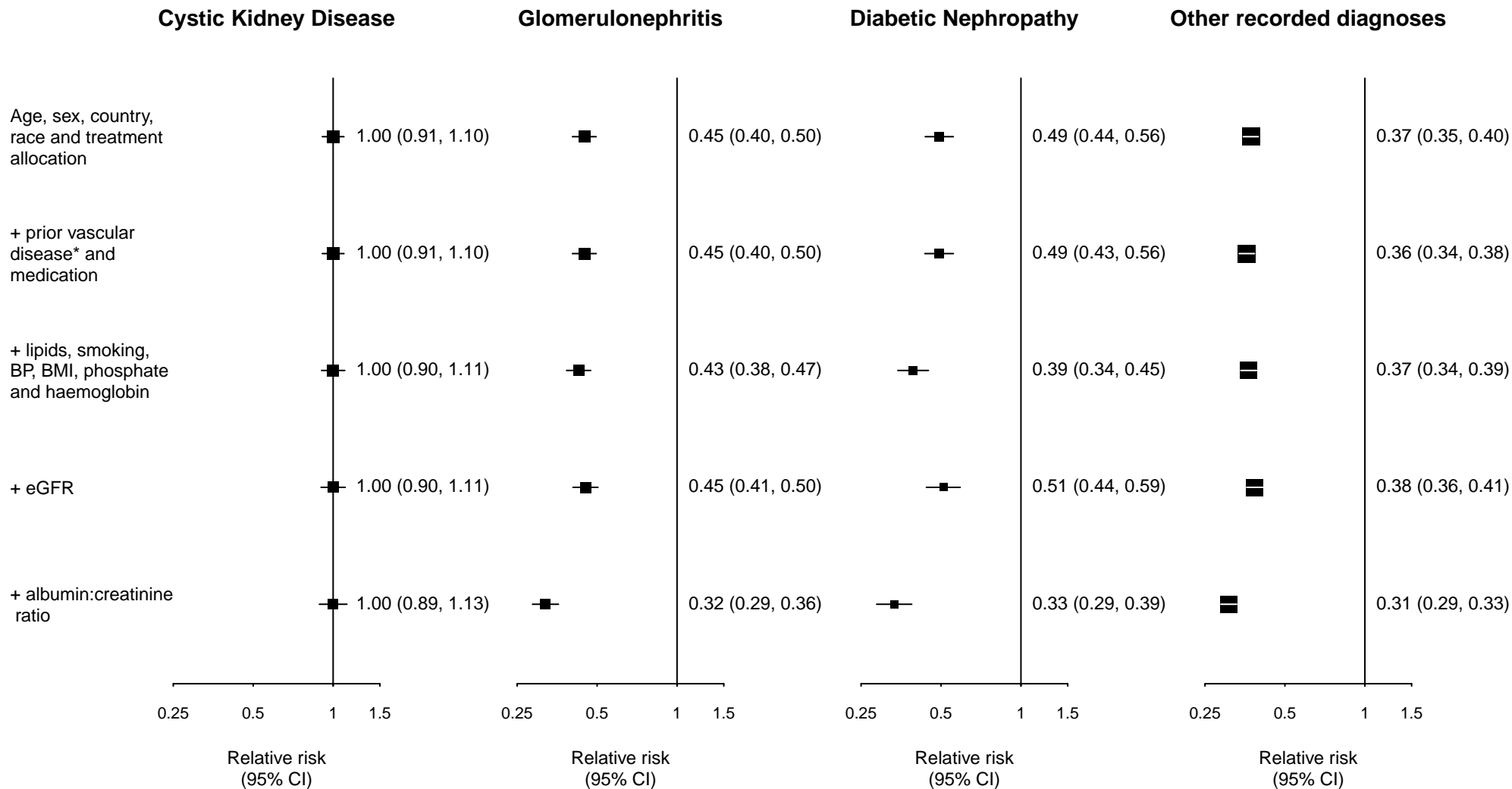


Figure S2: Effect of adjustment for known risk factors on the association between cause of kidney disease and end stage renal disease using Fine and Gray regression



*Additional adjustment for prior diabetes has very little effect on the relative risks observed, but as the interpretation of the relative risk for the diabetic nephropathy group after adjustment for diabetes is unclear, it is not adjusted for in these analyses.